

Callala Bay NEWS

April 2026

Issue 150-2026

Monthly Magazine from the Callala Bay Community Association Incorporated



*The Callala Bay NEWS proudly supports your local community
by helping to fund projects that benefit all residents.*

Consider supporting us by subscribing for a small yearly fee.

Contact: editor.cbcanews@gmail.com



first national
REAL ESTATE

Callala

4446 4313



Callala First National has been servicing the local area for more than 19 years and continues to strive to provide a service above and beyond our clients expectations. If you are considering selling or renting your property contact our friendly team on 4446 4313 or drop into our office at 58 Boorawine Terrace, Callala Bay.
www.callalafirstnational.com.au

We're for families looking for more than care.

A place where children feel comfortable, confident and genuinely excited each day.

- ★ Small group sizes and steady routines
- ★ Familiar faces your child knows and trusts
- ★ Play-based child-led learning
- ★ A calm, welcoming environment

Join the waitlist biglittlefutures.com.au | (02) 4446 6089

Big little FUTURES
Early Learning Callala Bay



Cloudberry Herbalism

The power of plant medicine combined with ancient practices to heal your mind, body, soul & spirit.

Herbal Medicine • Iridology • Nutrition

Herbalist John Taylor

In person & online consults available

Phone: 0407 489 063 - Callala Bay & Nowra

Email: herbalhealingcentre@bigpond.com

CALLALA BAY NEWS

A monthly newsletter of the
Callala Bay Community Association Inc.
ABN: 68 031 980 561
www.callabaycommunityassociation.com
Email: admin@callabaycommunityassociation.com
PO Box 14 Callala Bay 2540

CBCA Inc COMMITTEE

EXECUTIVE

President

Scott Horsburgh

Vice President

Sue Chapman

Treasurer

Julie Morris

Secretary

Fiona Ellis

COMMITTEE MEMBERS

Garry Chapman OAM

Jacinta Flattery-O'Brien

Mark Broadhurst

Garry Riggs

Robert Harnett

Teresa Medcalf

James Morris

INDEX

Culburra Beach & Districts Men's Shed	Pages 4-5
CBCA AGM Report	Pages 6-7
Emergency Contacts	Page 12
Callala Community Garden	Pages 14-15
Callala Markets	Page 18
Culburra Beach & District Garden Club.....	Page 24
From the Doctor	Page 32
CBCA President's Report ...	Pages 34-35
Community Contacts	Page 38

Note from the Editor:

The CBnews proudly supports our community, consider subscribing for a small yearly fee.

Please contact us with any local issues or concerns with the intention of having it published.

Crookhaven Mechanical Repairs



4447 5845



FREE Pick - Up Callala - Bay - Beach - Myola

We Can Service Your NEW Car AND Protect YOUR Warranty

Major Trip Prep - Suspension Upgrades - Bullbars - Accessories



ARC-AU21881



crookhavenmechanical.com.au

MVRLic35947

Culburra Beach & Districts Men's Shed

The Shed has enjoyed some good sales days recently at the Callala Markets, which is most beneficial in providing the funds we need to maintain our equipment and purchase tools and materials. We hope this trend continues in April, with an early Easter and the NSW school holidays offering visitors a last chance of warm Autumn weather.

We recently completed a commission for the Shoalhaven Arts Society to supply display stands for their upcoming Easter Art show at Pyree. We wish them every success at this annual event and hope that our handiwork magnifies the great efforts of our many and varied local artists.

If you have a 'special order', or project like these display boards, please call in and we're happy to assist. We recently completed another street library for a Callala Beach resident and our members are always up for a challenge.



Display stands for Shoalhaven Arts Society

**USE,
LEARN
& SHARE
SKILLS**



**CULBURRA BEACH &
DISTRICTS MEN'S SHED**



**CALL US ON
0494 055 329**

FIND US BEHIND THE POLICE STATION.

Shed members continue to also produce cutting boards, chopping blocks, cheese boards, coat racks, drink coasters, etc.; all from recycled native and exotic hardwoods. We also offer garden novelties like “Whirlybirds” which are providing quite popular.

Our “Fix it Mondays”, where we undertake minor repairs and refurbishments continue to be well supported. Bring in that broken timber chair, side table, garden ornament or family heirloom and we will endeavor to “Fix It”. And this is not just limited to timber items - we have a welding bay ready to assist with repairs to metal and steel.

We’ll be at the Callala Markets on Saturday 11 April 2026, with our full range of nest boxes, native bee hotels and timber craft on sale. We’ll also be able to answer any questions you may have about what our Shed has to offer you.

Follow us on Facebook, or join our Facebook group, to stay up to date on products, events and other items of interest. You can contact us through Facebook, via email to CBDMS1@outlook.com or by phone on 0494 055 329.

**If your car is running,
I am voting for it**



*Custom mantel clock, in local hardwood,
Created by Glenn*

ATB GARDENS
YARDS + TREES
All aspects of garden, yard & property maintenance

- Lawn Mowing • Irrigation • Fertilising • Aerating
- Tree Work • Landscaping • Hedging • Mulching
- Rubbish Removal • Domestic & Holiday Rental Cleaning
- High Pressure Water Cleaning • Garden & Yard Make Overs



• Commercial • Domestic • Rural Properties

0415 732 801

ABN: 16 821 580 073

andrew@atbcontractors.com.au

www.atbcontractors.com.au

Update from the CBCA – March 2026 Annual General Meeting (AGM)

The CBCA held its AGM on Wed 11 Mar 26, which provided a great opportunity to hear reports from the President and the Treasurer about the activities of the Association during 2025. The full President's report is found elsewhere in this newsletter, and it highlights the many activities a small group of volunteers from the CBCA undertook during the year. The Treasurer reported on the good financial position, again due to the great work that a small group of volunteers. The CBCA was in the position to donate funds to some of our local organisations including the Callala Public School, the Callala Bay RFS and the Outrigger Club.

Elections were held for Executive and Committee positions, ably overseen by our voluntary Returning Officer, Shannon Leglise from the Callala Pharmacy. Merry Dickins, Rob Barrell, Tanya Coli and Kim Proctor did not stand for re-election, and they were thanked for their contribution to the CBCA.

The following are the office bearers:

President - Scott Horsburgh

Vice President - Sue Chapman

Secretary - Fiona Ellis

Treasurer - Julie Morris

Committee Members:

Gary Chapman OAM, James Morris, Rob Hartnett, Teresa Medcalf, Garry Riggs, Mark Broadbent, Jacinta Flattery-O'Brien.

Please feel free to talk to any of them about what's important to you as Callala Bay community members and come along to the General Meetings to hear from our Councillors and others with interesting things to say. It would be great to see new volunteers to assist on the many projects in which the CBCA is involved.

A General Meeting of the CBCA was held just before the AGM. Julie and James Morris were made life members of the CBCA for their tireless work for the Association and the community over the past 10 years. Congratulations and thank you, Julie and James.

**Is there ever a day
when mattresses
are not on sale?**



Tai Chi & Qigong for Health

Callala Beach Community Centre

Tuesdays 11:30am

To Book contact:

Joanne

0416 271 408

- Feel the flow of vitality -



Scott Horsburgh

Ph: 4446 6544

18/55 Emmett Street
Callala Bay 2540

**Your Local Butcher
The Meat Specialist**





Callala OOSH By Katie

Callala Before and Afternoon Care for school-aged children by qualified and caring staff.

For information please call Katie-

0419917793 or 0427976669

email: callalaooshbykatie@gmail.com



Callala Gallery

15 Callala Beach Road Callala Beach

Open 10am to 3pm

Week Days & Weekends

Weekly classes in H2O Oils, Acrylics, Watercolours, Pyrography, Mixed Media, Mosaics & Clay Sculpting.

Workshops by appointment.

Artworks for sale by local Artists.

We do take Commissions & have a lay-by agreements.

Ph: 4446 5770 Mob: 0407 465 770

www.artclassesnowra.com

Callala Gallery on Facebook



Callala Physiotherapy and Pilates

Pre and Post-operative Rehabilitation | Reformer Pilates
Sporting injuries | Arthritis management

www.callalaphysiopilates.com.au

Phone: (02) 4413 0349 Email: info@callalaphysiopilates.com.au



VEOLIA

Mulwaree Trust

The new Sharp printer has been purchased through the generosity of a grant from the Veolia Mulwaree Trust.

FIONA PHILLIPS MP

FEDERAL MEMBER FOR GILMORE

ON YOUR SIDE

As a Callala Beach local, I'm proud to be your local voice and delivering for our community.

If you need any assistance, would like a Seniors Kit, or would like a special birthday or anniversary message, contact my office today.

I'm on your side.



**Scan the
QR code to
keep in touch**

- 📞 4423 1782
- ✉️ Fiona.Phillips.MP@aph.gov.au
- 📍 3/59 Junction St, Nowra NSW 2541
1/6-8 Orient St, Batemans Bay NSW 2536
- 🌐 FionaPhillips.com.au

AUTHORISED BY FIONA PHILLIPS MP, ALP, 3/59 JUNCTION ST, NOWRA NSW 2541



ANGLICAN CHURCHES of Culburra Beach | Callala | Currarong

Callala Church Service - 5pm Sunday
All Welcome | 4:30 pm for afternoon tea
St Marks, 2 Hunter Street, Callala Bay



Please contact us for more
information or visit our web site.

p: 02 4447 3277

e: office@culburraanglican.asn.au

www.culburraanglican.asn.au

Growth Group Bible Studies
Contact us for times and locations

Caterpillar's Playgroup
9:30am Friday @ Culburra Beach Anglican

289youth
Friday Nights @ Culburra Beach Anglican



Having problems with
your computer?

Hayton.Biz IT

Local computer
support & service.

Onsite IT & computer support for business and home users.

Experienced technicians, same day service, No call out charge for the local area* & competitive rates.

Laptop repairs/servicing also undertaken.

- Computer repairs
- General PC report
- Computer servicing
- General PC advice
- Internet problems
- Email setup
- Virus/malware removal
- Network configuration
- Domain registration
- Server installation
- Server support
- Backup configuration

0422 599 305

**Call
Today**

Culburra Beach Orient Point Men's Shed Inc.

The Shed by the Lake

Location: Old Scout Hall Cnr West Crest & Wollumboola Lane

NEW MEMBERS WELCOME

You are invited to join the Longest Established Men's Shed in Culburra, learn new skills and bring your own, come and enjoy the company of our friendly members and participate in a variety of activities

We are open 8:30am - 12:30pm Tuesday, Wednesday & Thursday

All enquiries: 0498 023 781

www.culburrabeachmensshed.org.au

Facebook: Culburra Beach Orient point Men's Shed <https://www.facebook.com/cbopmshed>



CLUB HOURS

Mo: 12:00PM - 7:00PM
 Tu: 12:00PM - 9:00PM
 We: 12:00PM - 9:00PM
 Th: 10:00AM - 10:30PM
 Fr: 10:00AM - 10:30PM
 Sa: 10:00AM - 10:30PM
 Su: 10:00AM - 9:00PM

43 Callala Beach Road, Callala Beach
 02 4446 5313 clubcallala.com.au
 venuesupport@clubcallala.com.au



for information & bookings, call us on
 02 4446 5313 (option 2) or contact
 callalagolf@bigpond.com
 open every day pending weather

CLUB CALLALA SPORT ACTIVITIES

MONDAY:

Indoor Bowls - from 12:00PM

TUESDAY:

Veterans Golf - from 7:30AM to 1:00PM
 Social Darts from 5:00PM

WEDNESDAY:

Callala Mixed Social Bowls - from 12:30PM
 Ladies' Golf - from 8:30AM to 1:00PM

FRIDAY:

Fitness Class - from 10:30AM

SATURDAY

Mixed Golf Comp - from 7:30AM to 1:00PM

EVERY DAY

Barefoot Bowls \$15 per person,
 includes equipment hire
 kids aged 12 & under play for **free!**

RAFFLE ROSTER

THURSDAY

Club Raffle - tickets sold from 6:00PM
 Bowls Schooner Draw - from 7:45PM

FRIDAY

Mega Meat Tray & vouchers Raffle -
 tickets sold from 6:00PM, drawn 7:00PM

SATURDAY

Fisho's Raffle -
 tickets sold from 12:00PM to 1:30PM

LAST SATURDAY OF EACH MONTH

Raffle -
 tickets sold from 6:30PM, drawn 7:00PM

SUNDAY

Sunday Raffle - tickets sold from 4:30PM

**COURTESY BUS AVAILABLE FOR A GOLD COIN DONATION
 SERVICING CALLALA BAY, CALLALA BEACH, AND MYOLA
 MONDAY TO SATURDAY FROM 4:00PM, SUNDAYS FROM 3:30PM**

accommodation now available at:



31 Callala Beach Road, Callala Beach

for all enquiries, contact our motel management
 Professional Holiday Homes on (02) 9194 4411
 enquiries@professionalholidayhomes.com.au



Lunch Service:

Every Day From
12:00PM - 2:30PM

Dinner Service:

Tuesday to Sunday
5:00PM ONWARD
 Monday (Pizzas Only)
5:00PM - 7:00PM

\$15 LUNCH SPECIALS - MONDAY-FRIDAY-

DINNER SPECIALS

TUESDAY \$25 Rump Steak Night

WEDNESDAY \$20 Chicken Schnitzel Night

THURSDAY \$22 Pizza Night

SATURDAY \$17 Club Beef Burger Lunch Special

SUNDAY Roast \$22 Lunch & Dinner

- ALL WEEKLY SPECIALS DINE-IN ONLY -

OTHER WEEKLY EVENTS

TUESDAY

Trivia starting 6:30PM

THURSDAY

Bingo from 11:00AM

Happy Hour from 5:00PM - 7:00PM

Pool Comp - rego from 6:30PM, starts 7:00PM

Member's Badge Draw 7:30PM

SATURDAY

Live Entertainment Every Week

LAST SATURDAY OF MONTH

Second Chance Draw & Members Badge Draw

SUNDAY

Fisho's Weigh-In on the fourth Sunday of the
 month from 2:00PM

Member's Badge Draw 6:00PM

Callala RSL Country Fishing Club



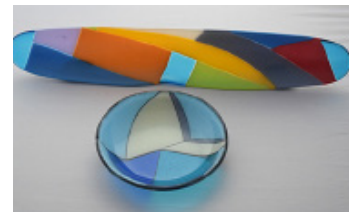
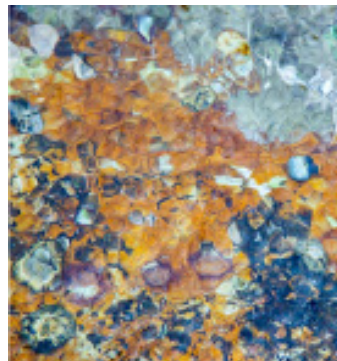
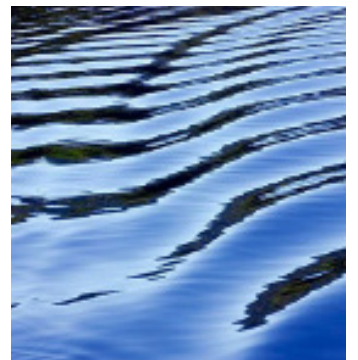
Callala Beach Road, Callala Beach 2540



CURRARONG ART TRAIL

currarongarttrail.com.au

first Saturday of every month
10am - 2pm



Emergency Phone Contacts

Situation/Service	Phone Number	Website
Injury or Health Crisis	000	ambulance.nsw.gov.au
Motor Vehicle Accident	000	police.nsw.gov.au
Police	000	police.nsw.gov.au
Police – Non Emergencies	131 444	police.nsw.gov.au
Police Crime Stoppers	1800 333 000	police.nsw.gov.au
Household Fire / Hazmat	000	fire.nsw.gov.au
Bushfire	000	rfs.nsw.gov.au
Shoalhaven RFS District Office	4424 4424	rfs.nsw.gov.au
Bushfire Survival Plan	-	rfs.nsw.gov.au
Bush Fire Information Line	1800 679 737	-
Flood, Storm and weather warnings	-	bom.nsw.gov.au
Storm / Flood	132 500	ses.nsw.gov.au
Power Outages	131 003	endeavourenergy.com.au
Main Road Closures	132 701	livetraffic.com
Local Road Closures	1300 293 111	shoalhaven.nsw.gov.au
Shoalhaven City Council	1300 293 111	shoalhaven.nsw.gov.au
Shoalhaven Hospital	4423 9500	-
Milton Hospital	4454 9100	-

If you are **deaf** or have a **speech** or **hearing impairment** dial **106** for the Text Emergency Relay Service

Useful Apps & Websites

Visitors to the area can download the following free mobile apps to stay informed of the latest advice and information in the event of an emergency.

Emergency+ App

The Emergency+ app is a free app developed by Australia's emergency services, Government and industry partners.

The app uses GPS functionality built into smart phones to help a Triple Zero (000) caller provide critical location details required to mobilise emergency services.



emergencyapp.triplezero.gov.au

Other Helpful Apps & Websites



Fires Near Me NSW



Floods Near Me



Weather Zone



COVID Safe



BOM



Marine Rescue



Live Traffic



Facebook



Twitter



DISASTER DASHBOARDS

shoalhaven.disasterdashboards.com/get-ready/overview



Want to know the value of your home?



Scan to Discover

As One Agency grows, we remain committed to delivering exceptional service across the South Coast, backed by our position as the region's largest and **#1 selling real estate agency**



Nowra & Jervis Bay
112 Kinghorne St, Nowra
3/62 Owen St, Huskisson



(02) 4423 6000

BUY

SELL

LEASE

COMMERCIAL

PROJECTS

CALLALA COMMUNITY GARDEN



CALLALA COMMUNITY GARDEN NEEDS YOU!

We're always keen to have new members and gardening volunteers. Come and join us!

Where can you find us? Opposite the Callala Bay shops, beside the skate park.

CURRENT PRODUCE AND FUTURE PLANTINGS



We have enjoyed a lovely selection of eggplant, Davidson plums and capsicums but they have all now finished production. We wish we could have these all year round, but sadly no.

We look forward to growing cabbage family, leeks, potatoes, while still continuing lettuces, rocket and leafy greens during our winter season.

RAIN LILLIES

These lovely flowers provide a delightful entrance corridor for our garden this time of year.

RHUBARB BEING RE-HOMED

Some more of our rhubarb is being rehomed. We are searching for its happy place and look forward to harvesting abundant stems for all to share!



OUR ORIGINAL INSECT HOTEL

This little structure has taken on renewed interest with the arrival of our native bee hive. Some insects have taken up residence and plugged up the entrances to a number of these hollow tubes.



THANK YOUS

C & S Tree services for our pile of wood mulch. Locals are welcome to obtain small quantities of mulch from this pile which is situated up on Emmett street. Chittick Dairy at Pyree supplied us with several bags of cow manure. These will be a valuable addition to our compost, then added to the beds. Finally, we thank Will, the greenkeeper and also Roy from Callala Golf Club for the donation and delivery of a superb timber stump. This is the foundation for our new Native Stingless Bee hive. The generosity of local businesses and individuals is so much appreciated by our community Garden and helps keep us ticking along. We are regularly getting really good numbers of volunteers. Thankyou all.



OUR ONGOING LICENCE

Callala Community Garden, in line with Council policy, has reapplied for a licence to occupy the Shoalhaven Council owned land at 52 Emmett Street. Our current licence expires in July, 2026. Madeleine led the committee members and put in an enormous amount of work to prepare our submission. Thank you Madeleine.



PEST UPDATE

This summer our large tomato varieties of Oxheart, Mortgage Lifter and Black Krim produced much better volumes than in previous years. Largely they were pest free, except for minor incidences of fruit fly being found in two tomatoes. One occurrence in December and another in February. This is a reminder for us not to be complacent and to keep monitoring the lure traps to achieve control. A few flea beetles have been present again, popping up mainly on basil, but later on they found the eggplant, which the beetles severely impacted in the previous year. Strangely, the white cabbage butterflies have been very small in number and caused very little damage. Perhaps the extremely hot days we experienced this summer had an impact on their ability to thrive?



WHAT'S ON - APRIL

Regular mornings

Tuesdays and Thursdays
from 9am

General Meeting

2nd April at 11am.

Working Bees

Sundays
5th & 19th April from 9am
(pending volunteers)

Pick and Prep Fridays

10th April from 3pm

Produce Market

11th April

FUN FRIDAY IS BACK

(Get ready for Easter) from 9.30 To 11.00



27th March & 24th April.

Morning Tea will be provided. Bring the little ones. This is a great way for preschoolers to socialize and explore this food garden and flower wonderland. Parents and carers can also enjoy the morning in a relaxed environment.



Callala Bay Pharmacy

2/55 Emmett Street, Callala Bay 2540 Ph: 4446 4251

Hours: Mon-Fri 9am-5.30pm; Sat 9am -12.30pm

Friendly, professional service

- Diabetes Australia supplies • Vaccinations • Gift lines
- Blood pressure monitoring • Medication packing

Phone: 4446 4251

Dr John C Wright B.V.Sc.

CULBURRA VETERINARY CLINIC

7 Weston Street, Culburra Beach

9am-11am weekdays

4-6pm Mon, Tue, Thurs

4-5pm Wed, Fri

10am-12pm Sat

CALLALA VETERINARY Consulting Room

22 Emmett Street Callala Bay

1-3pm weekdays by appointment

Please phone: **4447 3851** for appointments, enquiries or after hour calls



E & S Painting Services

- Interior & Exterior Painting
- Friendly Local Service
- Excellent Rates
- Quality Assured

M: 0422 560 696 H: 4446 5056

Graham Worts



Vinnies

CALLALA BAY SHOP

- **High quality second-hand items**
- **Clothing, bric-a-brac, books, linen, beach towels, toys, games, DVDs, jewellery and much more!**

VOLUNTEERS NEEDED

**YOUR TIME IS THE MOST VALUABLE
GIFT YOU CAN GIVE.**

For details of how you can help,
visit www.vinnies.org.au or pop into the shop
for an application pack.

Find us at: **59 Emmett St, Callala Bay**

Opening hours: **Monday to Friday - 8.30am to 4pm,**
Saturdays - 8.30am to 2pm (during summer/peak times only)

**We welcome donations of non-bulky items during opening
hours. For pickups, please call 4421 7244.**

Valentines Day Markets

The March Callala Markets had less than previous months' customers and some stall holders reported reduced sales. We're now well past the summer holidays but hope for improved results in April, with an early Easter and the NSW school holidays.

Our stall holders offer a range of locally made products, ranging from handmade candles and soaps, jams and spreads, wooden plaques and bowls, handmade pottery and jewellery through to crystals, nest boxes and bee hotels, baby booties and hats, timber craft and novelties, designer cards, and soft knitted children's toys.

All profits from stall fees provide the base for our ongoing donations to local community organisations and charities. We recently made another donation to the Bearded Fishermen, to further assist their work to improve men's health and employment opportunities.

In April there will be two Callala Markets; first on Easter Saturday 4 April, and then again on Saturday 11 April. Both events will operate from 8am to 1pm at the Callala Community Centre, Emmett Street, Callala Bay. We're looking forward to good weather and high numbers of visitors, anxious to



Native bee and insect hotel, made by the local Men's Shed

enjoy the Autumn weather before days grow cooler and shorter. So, call in early and grab a bargain.

The Callala Community garden will also be operating so check out their range of seasonal produce..

We always hope for fine weather, but we'll be there - rain, hail or shine.

Want to join us? Contact Sandra on 0413 581419 for stallholder enquiries.

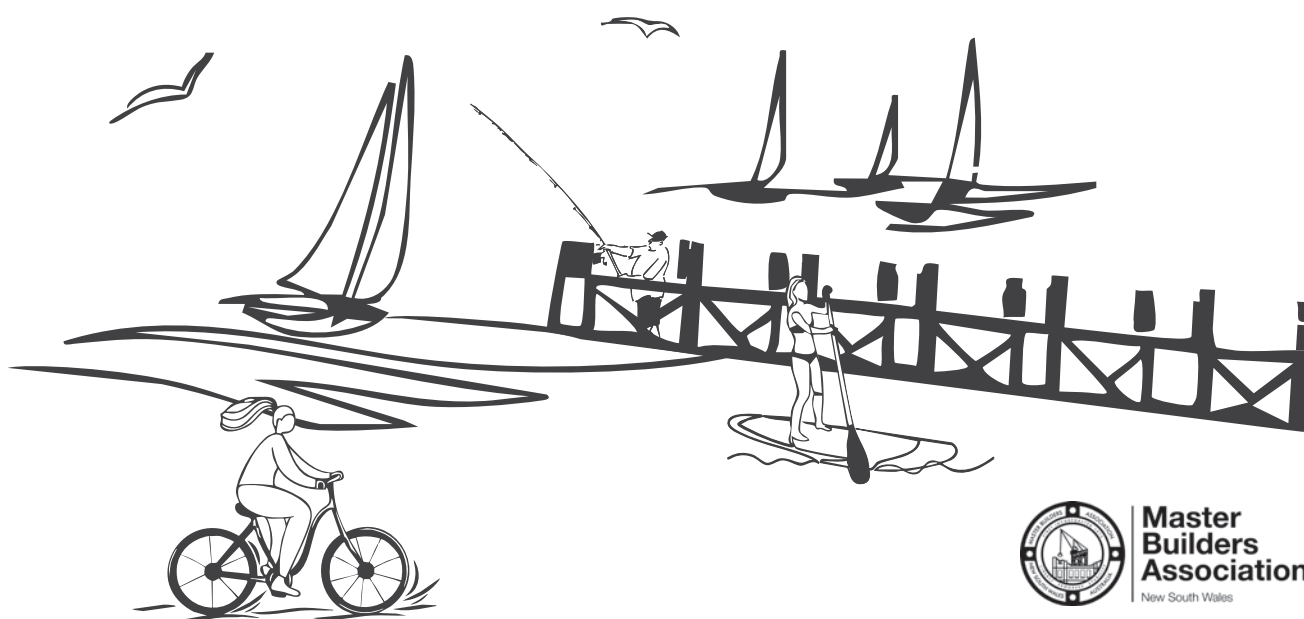


2nd Saturday
EACH MONTH
**42 EMMETT ST,
CALLALA BAY**
8:00AM - 1:00PM



THE COVE

AT CALLALA



Retirement Lifestyle Living


- 8 x 2 bed boutique villas
- 75% sold, 2 villas still available
- Independent living designed
- Elegantly finished
- Construction complete
- Low maintenance / low strata
- 200m to Bayview Plaza Shops
- 500m to Foreshore
- 700m to boat ramp/jetty
- **Call Ben on 0411 172 100 to view**

Premier Motor Service

BUS TIMETABLE - ROUTE 120

Phone 02 4423 5233 or 133 410

Bomaderry-Nowra to Callala Bay, Callala Beach, Currarong & Myola

	MONDAY TO FRIDAY										SATURDAY				SCHOOL HOLIDAYS					
	♿	♿	♿	♿	♿	♿	♿	♿	♿	♿	♿	♿	♿	♿	♿	♿	♿	♿	♿	
ROUTE 120 Bomaderry-Nowra to Callala Bay, Callala Beach, Currarong & Myola																				
OUTBOUND																				
LOOK FOR ROUTE NUMBER 120																				
Train Arrives (Bomaderry Rail)	6:17				9:15	12:27	14:17	PM	♿	♿	♿	♿	♿	♿	♿	♿	♿	♿	♿	♿
BUS DEPARTS																				
Bomaderry Railway	--	6:33	--	--	9:30	12:32	14:40	--	17:17	--	9:30	12:32	14:40	--	9:30	12:32	14:40	--	17:17	--
Nowra Tafe	--	--	--	--	9:32	12:35	--	15:30 S	--	--	--	--	--	--	--	--	--	--	--	--
Stewart Place, Nowra	--	6:43	--	--	9:20	12:20	14:55	--	17:24	--	9:20	12:20	14:55	--	9:20	12:20	14:55	--	17:24	--
Stocklands Nowra	--	--	--	--	9:40	12:40	14:45	--	17:34	--	9:40	12:40	14:50	--	9:40	12:40	14:50	--	17:34	--
Shoalhaven High School	--	--	7:55	--	--	--	--	--	--	--	--	--	--	--	--	--	--	--	--	--
St Michaels School	--	--	--	--	--	--	15:00	--	--	--	--	--	--	--	--	--	--	--	--	--
Hwy opposite Bunnings	--	--	--	--	9:45	12:45	15:10	--	--	--	9:45	12:45	15:00	--	9:45	12:45	15:00	--	17:40	--
Hwy Pearl Service Station	--	--	--	--	9:46	12:46	15:11	--	--	--	9:46	12:46	15:01	--	9:46	12:46	15:01	--	17:41	--
Mayfield	--	--	--	--	--	--	--	15:45 S	--	--	--	--	--	--	--	--	--	--	--	--
Sydney Avenue	--	--	--	--	10:10	DOR	15:32	16:05 S	17:58	--	10:10	DOR	DOR	--	10:10	DOR	DOR	--	17:58	--
Boorawine Terrace	--	--	--	--	10:13	DOR	--	--	--	--	10:13	DOR	DOR	--	10:13	DOR	DOR	--	--	--
Callala Bay Shops	--	--	--	--	10:16	DOR	15:33	--	18:00	--	10:16	DOR	15:15	--	10:16	DOR	15:15	--	18:00	--
Callala Bay Public School	--	--	--	--	10:17	DOR	15:34T	16:17T	--	--	10:17	DOR	DOR	--	10:17	DOR	DOR	--	--	--
Queen Mary Street	--	--	8:12	--	10:20	DOR	15:46	16:31 S	--	--	10:20	DOR	DOR	--	10:20	DOR	DOR	--	--	--
Catherine Street Myola	--	--	8:20	--	--	DOR	15:51	16:35 S	--	--	--	DOR	DOR	--	--	DOR	DOR	--	--	--
Sir Henry Crescent	--	--	8:27	--	10:23	DOR	15:56	--	--	--	10:23	DOR	DOR	--	10:23	DOR	DOR	--	--	--
Callala Beach Shops	--	--	8:29	--	10:25	DOR	15:44	--	18:05	--	10:25	DOR	DOR	--	10:25	DOR	DOR	--	18:05	--
Wattts & Lennox loop	--	8:32	--	--	10:28	DOR	15:42	--	--	--	10:28	DOR	DOR	--	10:28	DOR	DOR	--	--	--
Callala Bay Shops	--	8:45	--	--	--	DOR	--	--	--	--	--	DOR	DOR	--	--	DOR	DOR	--	--	--
Fishery Rd @ Merimbula St Currarong	--	7:12	--	--	8:23	DOR	15:56	16:26	--	--	--	DOR	DOR	--	--	DOR	DOR	--	--	--
Crookhaven Pde @ Piscator Ave	--	7:15	--	--	8:25	DOR	16:00	16:25	--	--	--	DOR	DOR	--	--	DOR	DOR	--	--	--

South Coast Soul

YOGA & WELLNESS
JERVIS BAY



Weekly Classes with Carla Versitano

TUES 9:30am Gentle Yoga
Callala Beach Community Hall

WEDS 5:30pm Restorative Yin Yoga
Callala Beach Community Hall

THURS 8:30 am Pilates
Callala Beach Community Hall

FRI 8:15am Radiance Vinyasa Yoga
Huskisson Community Centre

Pay with cash or card. Props available. No booking required

www.southcoastsoul.com.au | [@southcoastsoul](https://www.instagram.com/southcoastsoul) | 0422 433 159



WAYNE'S WELDING

ABN: 72 721 264 751

Wayne Birt

Aluminium or Steel Boat Repairs

Trailer (box or boat) Repairs

MIG and TIG

Custom work for cars, boats or caravans

Phone: 0407 203 041



Tennis @ Callala Bay



Fancy a hit?

Located here in Callala Bay, the courts are attached to, and managed by the Callala Bay Progress Hall. They are located at the corner of Wearne and Morton St.

Bring your own rackets and balls!

Ring 444 64 313 to book

Available for casual and regular bookings.

Lessons—call Daisy on 049 053 7551

Culburra Beach and District Garden Club Inc.

Hi everyone, at our March AGM, Bev Faulkner stepped down as President after 7 years. It was a sad moment for us, but Bev feels that it is time to move on. She will still be our Public Officer and will be attending meetings. Sharran Straatman was elected as President, and she will chair her first meeting next month. We are incredibly grateful that Sharran decided to become president as she has to travel from Ulladulla every month. Another change is that we have a new editor in the form of our youngest member Vanessa Tracey. Former editor Christine will be moving in the next few months. We have a new Welcomer and friend Wanda Hazard from CCG is to help with the Trading table. We celebrated St Patrick's day by wearing green. Member Jenny Townsend kindly donated green headbands with shamrocks from the Anglicare OP shop. We even had green food - our members brought in cake with green icing, grapes, fairy bread with green sprinkles and mint lollies. Others chose to garnish sandwiches with parsley. The display table featured green foliage.

The highlight of the meeting was guest speaker, Anthony Grassi who came along with his dad Julian. Anthony did a workshop via a power point presentation on Frangipani. What did we learn?

1. Frangipani (*Plumeria Luberia*) originated from Central America, Mexico, and the Caribbean Islands and not from Hawaii as many think.
2. They require 5-6 hours of sunlight, are drought resistant and can grow from 1 to 8 metres. They can live for an exceptionally long time. Anthony showed us a photo of a 350-year-old Frangipani (classic white/yellow) growing near a temple in Cambodia. They know how old it is because it was planted when the temple was built.
3. Flowers, colour, and perfumes have a huge gene pool thanks to China and Thailand who are doing a lot of cross pollination.
4. We did not know that the Frangipani produces seed pods. You can place seeds in a seed germination medium and allow 10-14

days to germinate and 2-3 years to flower.

5. Cuttings- you must allow cuttings to dry out from 2 weeks to one month in a shady location. Take cuttings from Oct./Nov to Feb./March. Place cuttings (about 6 in each pot) in a mix of 50% river sand and 50% cactus/succulent potting mix.
6. Frangipani roots are not invasive so don't worry if you planted one close to your house.
7. Pests and diseases- rust which attacks the leaves. You can spray with eco oil, eco neem or eco fungicide. Anthony said in winter it sheds all its leaves so you can collect them all and bin them- you don't need to spray each leaf. New leaves will shoot again in spring. The best thing to do after this happens is to spray around the base of the tree.
8. Fertilisers- Anthony prefers a slow releasing fertiliser, or Gogo juice, Sudden Impact for roses (twice a year), Who flung Dung and Sea Mun Gus. Dynamic lifter is good too. I asked him about my Frangipani in a pot which I have never fertilised. He said I must do it as the plant is not getting any nutrients from that small amount of soil.

Anthony handed out Frangipanis to all and asked us to put it behind our ear. It is said that those who put it behind their left ear are either married or have a partner. Those who wear it behind their right ear are on the hunt. (his words) Anthony was fantastic, not only because he imparted so much knowledge, but he was fun. We really enjoyed the afternoon. He also brought in a little gadget and sharpened out secateurs.

We thanked him for visiting our garden club and he said he is happy to come back and tell us more.



Cheers to all and happy gardening, Doris Carpenter 4446 5631 / mob.0428 255 616

Next meeting is April 18th. We meet at the Culburra Anglican Church, Penguin Head Rd, Culburra Beach. Meeting starts at 1.30pm. Theme colour is Lilac so you can wear lilac or any purple shade and pearls as this is going to be a special meeting.



CALLALA BOWLS NEW MEMBER PROMOTION!



Ladies and Gentlemen,

From May to July 2026 any new member of the Bowling Club will be offered **FREE** membership of the Bowling Club for **12 months!**

This offer includes:

- **FREE** tuition by **NSW Pennant bowlers**
- Eligibility to play in over 24 in-house and local club competitions during the year.
- Social bowls every Wednesday afternoon with registration by 12pm @ \$10 green fees which includes light snacks, rink prizes and entry to a **\$300 margin jackpot.**
- A warm and friendly environment with fresh air and exercise.
- Access to loan bowls for beginners.

Please do not miss out on this offer and get involved in one of Callala's most social groups.

Should you require any further information please contact:

Joy Gabrielsen: 0413 227 945

Bob Fowler: 0427 963 118



Book an appointment at EyeQ Optometrists Nowra.

If you're experiencing eye discomfort, have vision concerns or it's simply time for your next eye test, book in your next appointment today.

EyeQ Optometrists Nowra

59 Kinghorne St

Ph: 4421 4511



Scan the QR
code to book an
eye test today

EyeQ
OPTOMETRISTS

FREE

Pre-Loved Clothing & Book Stall

First Saturday of the Month
at the

Callala Community Centre

9.30am to 12.00 NOON

Clothes in good condition can be dropped off at the stall (on the day only). If clothing can be delivered by 10am; this will allow them to be displayed.

Sponsored by the Anglican Church, Callala

A Bush Kindy Preschool is Coming to Callala Bay

- 📍 Callala Bay Progress Hall
- 🗓️ Opening Term 1, 2026
- 👶 3-6 years
- 🌻 8:45AM - 3:15PM

Waitlist OPEN!

spots will be offered in the order families join the waitlist.
Pop your name down early to stay in the loop about enrolments, orientation days + village events.

📧 hello@cooeee.au 🌐 www.coeeee.au

CoOeee



Join our Waitlist



Instagram



COOEEEPRESCHOOL

- 🌿 Daily bush kindy walks
- 👶 Small, nurturing group environment
- 🦎 Play-based learning with real-world connections
- ❤️ A warm village where children grow with nature and families find their people

At CoOeee, we believe childhood should feel slow, connected, and full of wonder.

Defibrillators in Callala Bay

There is a number of defibrillators in Callala Bay.



They are located at:

- Club Callala
- Club Callala
- IGA Supermarket
- Callala Junior Sailing School
- Callala Community School
- Callala Medical Centre
- Callala Community Centre
- Callala Rural Fire Brigade
- Myola Tourist Park



Callala Bay
Open 7 Days A Week
Market-Fresh Fruit and Vegetables
Lotto Newspaper ATM

Ph: 4446 4811

It Pays to Shop Independent

Located in Bayview Plaza, 55 Emmett Street, Callala Bay

How the locals like it™

Callala Bay Progress Hall and Tennis Court



**Looking for a venue with history and charm?
Available for both casual and regular hire**
*Recently renovated ... and now with new audio visual
equipment available! Reasonable rates.*

Bookings Ph: 444 64 313

or via Facebook

75 Boorawine St, Callala Bay

Regular Community Users

Craft Group: Tuesday (10am)
Friends of Dance: Tuesday (2:30 pm)
Yoga: Thursday (9am)
Advanced Tai Chi: Saturday (8am)
Pickleball (Wed and Thursday afternoons)

Maree ph 0408 250 443
Ann ph 0418 477828
Anna ph 0405 102 234
Jenny ph 04477 43179
Blair ph 0433 926 659

Tennis Lessons: Thursday After School Daisy 0490 537 551

<https://callalabayprogresshall.weebly.com/>





Joelene Paterson

CULBURRA BEACH'S #1 AGENT
2 YEARS RUNNING

0456 905 171



Joelene Paterson is an acclaimed top-tier real estate professional at **Joelene Paterson Property**. With a celebrated corporate sales career and a genuine passion for real estate, Joelene has an award-winning track record of success. Her love for the area and its lifestyle, rooted in childhood holidays and now her own home, fuels her understanding of what attracts people to the region.

Joelene's trustworthy and empathetic approach fosters strong relationships, with her client's needs always at the forefront to ensure a seamless, stress-free experience.

"Joelene takes the time to understand your goals and requirements and fights tirelessly to meet them".

Call Joelene Paterson to discuss your real estate needs - 0456 905 171

JERVIS BAY FILM TRANSFERS

Records



Onto
CDs



onto DVDs



Cassettes



VHS movies

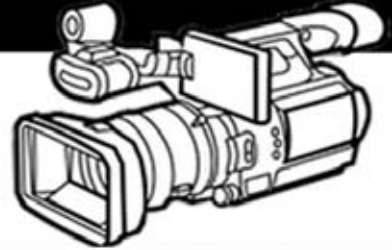


8mm Films onto USBs
Convert CDs to Mp3s
Scan Slides onto USBs

Call: 0401076338

jervisbayfilmtransfers.com.au

Wedding Videographer



We Build Corporate Websites

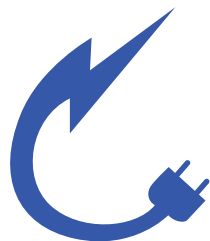
YOUR AD HERE

Advertise Your Business With The **CBnews** Today!

Very Affordable Rates For All Businesses!

Contact the Editor for more info
editor@callalabaycommunityassociation.com

The Callala Bay News Publication is proudly funded by the Callala Bay Community Association with the help of our local business sponsors



Chilko

ELECTRICAL

INSTALLATION, MAINTENANCE & REPAIR

Domestic - Commercial - Rural - Industrial

Mobile: 0419 405 797

Email: chilkoelectrical@gmail.com

LIC No. 76151C

www.chilkoelectrical.com.au

From the Doctor

We're pleased to welcome Dr. Eliza Eldridge Bassett to the Callala Family. Dr. Eliza is a Specialist GP Registrar with a special interest in women's health, paediatrics, and Indigenous health. She has hospital experience in paediatrics and women's health and is currently a Fellowship Candidate with the RACGP, while completing a Graduate Diploma in Child Health.

Originally trained through the University of Wollongong Rural Clinical School with strong local ties, Dr. Eliza has a strong connection to regional medicine and is proud to care for the Callala community.

Dr. Eliza believes in calm, compassionate, and patient-centred care, supporting individuals and families through every stage of life.

Outside of medicine, she enjoys mountain biking, time in the ocean, and bushwalking along the South Coast.

Dr. Eliza is now accepting new patients. Appointments available via HotDoc or by calling the clinic.



Introducing

Dr. Eliza Eldridge Bassett

GP Specialty Registrar (RACGP)



'Calm, Caring and Compassionate'

MD(University of Wollongong)
Diploma of Child Health Candidate (Usyd)

Special Interest
Women's Health. Paediatrics. Indigenous Health





WELCOME to the Callala Community Centre, conveniently located opposite the shops in Emmett St, Callala Bay.

We are one part of the Shoalhaven Community Information Network (SCIN). Our technology has been upgraded to include solar panels, a storage battery, and satellite communications to provide an independent, continuous, communication solution with the Nowra Emergency Centre.

The information can be seen on the screens located at the Centre.

An audio-visual system has been installed in the Centre offering flexible and comprehensive facilities, including;

- blue tooth; computer connectivity; the ability to operate DVDs and CDs and play personal audio-visual files from a USB drive or SD memory card.

If you want to have a wedding; memorial service; business conference; group gathering or family reunions the Callala Community Centre is well worth considering.

Our facilities include

- A well-equipped kitchen; air conditioning; raised stage and off-street parking, and
- Crockery, cutlery and glasses and seating for up to 120 people

For all hiring enquiries contact Cynthia on 0412 121 737
or email cynirwin974@gmail.com

Follow us on Facebook at Callala Community Centre.

CBCA President's Report 2025

I would like to thank the CBCA committee for their hard work and their commitment in serving the Callala Bay community.

The CBCA conducted a number of very successful events during the year which brought the community together. The events also raised funds which were then put back into the community in several ways.

We started the year with some sausage sizzles which were once again very popular with locals and visitors. They enabled us to sell a lot of raffle tickets as well as providing an opportunity to tell people about the CBCA. We had some fabulous prizes donated by local businesses and individuals. Their support was much appreciated.

The raffle was drawn at the annual breakfast by the Bay which was attended by around 300 people. The CBCA organised the Breakfast and funded the music and entertainment for children. The RFS was there to provide breakfast, and the CBCA was able to donate.... to them for equipment purchases. Feedback for this event is always fantastic, and the CBCA sees it as one of our major contributions to the community of Callala Bay. It requires a lot of effort, and I particularly want to acknowledge Jim Townsend who is always available to assist.

The supply of doggy bags on the path around the headland continues to be funded by the CBCA. The dispensers are filled up regularly by Jim Townsend and James Morris and I want to thank them for their tireless efforts.

During the year the CBCA donated funds to the Callala Bay School for their 'sip and crunch' program and for a school art competition. Working with young people in our community will become a focus for the CBCA in the coming year.

We held the democracy sausage barbeque for the Federal elections in May at the Callala Community Centre which was positively received by the voters!

The Sheaffe St path was laid and officially opened in the second half of 2025. This was the culmination of many years of lobbying by the CBCA at Council and State government level. Users have all said how much safer it is for people to access the water and the headland walking path from the shops and Lackersteen St.

The CBCA Committee had a very positive meeting with representatives of the Halloran Trust in November. The minutes of that meeting have been sent to CBCA members and were circulated at the CBCA General Meeting in December. This has commenced an ongoing dialogue with the developers in relation to the West Callala development. The CBCA will continue to raise questions from the Callala community with the developers and will ensure that the developers are informed of what is important to the community.

Membership of the CBCA has increased this year and is now higher than it has been in the past. We hope this will continue as more people see the value of a community association.

At the December meeting, we were informed of Shoalhaven City Council's intention to cease Community Consultative Bodies in mid-2026. The CBCA has been actively involved in working with other CCB's to develop an alternative model for communication with Council with one of the CBCA Committee on the working group to present options to Council. There will be more to report on this matter over the coming months but be assured that the CBCA is working hard to ensure that Council stays informed of what is important to our community.

The final event of 2025 was our free Christmas lunch. Around 40 people attended and enjoyed fabulous food and entertainment. Three hardworking volunteers, Christine, Theresa and Leanne, served and cleaned up, the entire Ellerington family cooked up a storm, and Denise did beautiful table decorations. Mhari, Kate and Max provided a great musical interlude. Feedback has been overwhelmingly positive, so the CBCA is on notice to do it all again in 2026!

As you can see, the CBCA has worked tirelessly for the community in 2025, with a small number of people doing most of the

heavy lifting. Without them, these things would not happen.

I look forward to seeing more members and volunteers joining us in 2026.

My wife tried to beat me at scrabble, but I wooden letter

Callala Community Garden

Interview: Lyn Barden

How did you find out about The Callala Community Garden?

I met a lovely lady from the Community Garden and during a conversation about our respective gardens, she mentioned the community garden and invited me to come along.

Why did you join?

Gardening is a passion of mine and I was keen to learn more. I have certainly done that. My primary motivation was to give something back to the community and be more involved in it.

What are the benefits?

It has become a social occasion that I look forward to. There are very friendly and knowledgeable people that I enjoy spending time with. I've learned about the value of composting and how to do it, worm farms, how to measure and adjust the pH of soil, how to propagate plants and how to grow vegetables and keep them disease free. I have even learned how to maintain Bonsais. I especially learned that you can't substitute poisonous rhubarb leaves for spinach! It's a lot!

Facebook: Callala Community Garden - www.callalacommunitygarden.com.au



Anything else to share:

When I first moved to this area, I was missing the working world and contact with such friendly and genuinely welcoming people filled a huge gap. Most importantly, there is no pressure and certainly no expectations to do any more than you are able. The garden community welcomes whatever people are comfortable to offer in terms of time and expertise.

CULBURRA & DISTRICTS COMMUNITY HEALTH SERVICES Inc.



Hello EVERYONE,

We would like to tell you a little about our Culburra & Districts Community Health Services Inc.

We are a Not-for-Profit organisation and was incorporated (CDCHS) on 8th March 1988.

We have a great Medical Bus service for you to avail yourselves of if needed, runs Monday-Friday (no Public Holidays). If you have a Medical appointment (only) either locally or into Nowra and you would like transport, please phone:

CULBURRA PHARMACY
187 PRINCE EDWARD AVE
CULBURRA BEACH
02 4447 2382

All you need to do is supply your details –

NAME, ADDRESS, PHONE NUMBER, DATE & TIME, WHERE YOUR MEDICAL APPOINTMENT IS THAT YOU NEED TO GO TO AND RETURNING FROM.

The Chemist shall put your details onto the Medical Bus run sheet for that day.

We cover the areas of: Currarong, Callala Bay, Callala Beach, Myola, Orient Point, Culburra Beach, Pyree, and Greenwell Point.

A small donation is always welcome as this along with our Op Shop helps to keep this fabulous community service running.

If you would like to be a volunteer Bus Driver (no special licence is required) or Op Shop Gem, please contact:

Contact: Neil Watson (Bus Drivers) 02 4447 4713
or
Pat Porter (op Shop) 0408 019 930.

The Anglican Parish of Culburra Beach

Anglicare Op Shop

Shop 3/4 Weston Street, Culburra Beach

Opening Hours:

Mon-Fri 9am - 4pm

Sat. 9am-12pm

** Closed Public Holidays*

Clothing, bric-a-brac, books, toys, linen, games, DVD'S, jewellery and more.

EFTPOS available

Saleable Goods are most welcome, but we can't accept furniture, white goods, mattresses, encyclopedias, computer ware and videos.



You can drop goods at shop or in charity bin situated at Culburra Anglican Church, Penguin Head Rd, Culburra.

If you would like to volunteer, please contact
Manager Neroli McCusker:
4447 4084 (Shop) or 0401 466 590

COMMUNITY CONTACTS

Emergency Police Fire Ambulance: 000

Nowra Police Local Area

Command: **4421 9699**

Crime Stoppers: **1800 333 000**

(anonymous reporting)

Police Assistance Line: **131 444**

(non emergencies)

State Emergency Service: **132 500**

Jervis Bay Marine Park: **4441 7752**

Callala Medical Centre: **4446 5350**

Shoalhaven Hospital: **4423 9500**

Milton Hospital: **4454 9100**

Shoalhaven City Council

General enquiries, business hours: **4429 3111**

Emergencies & after hours: **1300 293 111**

Justices of the Peace

Howard Duncan: **4446 6535**

Dallas McMaugh: **0400 189 875**

Culburra Beach & District Garden Club

We meet every 3rd Saturday of month

Feb-Nov at 1.30pm

Venue: Culburra Anglican Church
Penguin Head Rd, Culburra Beach.

For more details contact

Doris Carpenter: **4446 5631**

Culburra & Districts Community Health Service

Visit the Op Shop and pick up a bargain!
Proceeds help maintain the Medical Bus that transfers people to Nowra for medical appointments from Greenwell Point, Culburra Beach, Callala Bay & Beach, Currarong and Myola.

Please contact Culburra Pharmacy on **4447 2382** to arrange transport.

Culburra Beach & Districts Men's Shed

Location: Beside the Banksia Community Hall, off Fred Evans Lane, Culburra Beach (IRT entry).

Open: 8.30am to 1.00pm, Monday and Wednesday.

All enquiries: Phone **0494 055 329** or email **CBDMS1@outlook.com**

Culburra Beach Orient Point Men's Shed Inc.

Location: Old Scout Hall Cnr West Crest & Wollumboola Lane

Open 8:30am - 12:30pm Tuesday, Wednesday and Thursday

All enquiries:

Phone 0498023781 or email cbopmshed@gmail.com

www.culburrabeachmensshed.org.au

FACEBOOK: Culburra Beach Orient Point Men's Shed

www.facebook.com/cbopmshed

Callala Community Garden

52 Emmett Street Callala Bay
Opposite The Shops

Victoria Maudson: **0424 590 105**

email: callalacommunitygarden@gmail.com

 /groups/CallalaCommunityGarden

Drop In's welcome

DISCLAIMER

The Publisher, known as Callala Bay Community Association Incorporated, does not accept any responsibility or liability in any way whatsoever with regard to any of the paying advertisers contained in this newsletter. Additionally the views and comments of all reports submitted are the responsibility of the person/organisations submitting same, including those from SCC (Shoalhaven City Council), which are usually copied verbatim from correspondence and are included for your information. The reports do not necessarily reflect the views of the Publisher.



Driving Your Community

Join the
bank that's
bigger for you.

Community Bank
Nowra & District

Bendigo Bank
The better big bank

Truck & Forklift Driving School

Desire Bhugon

RMS Approved: LR, MR, HR, HC (Auto
and Manual)

OLDER DRIVER ASSESSOR



Tel: 02 444 66861 Mobile: 0418 654 572 Email: desdschool@bigpond.com



Vanessa Middleton

Licensed Real Estate Agent

0492 945 367

vanessa.middleton@ljhooker.com.au

nowra.ljhooker.com.au

 **LJ Hooker**

Vanessa is a well known face in our community, a **local of Callala for 28 years** and working locally in real estate for the past **17 years** with extensive knowledge and insight into the local market. Her dedication to customer service, innovation, honesty and openness have been the cornerstones of Vanessa's record of success over many years. Known for her friendliness, understanding, enthusiasm & strong negotiation skills.

A consistent number of repeat referrals is a testament to her expertise.

If you are looking for a local in real estate for buying or selling contact me today.

Happier, healthier pets

South Coast Veterinary Services is your local, independent and exclusive veterinary care provider.

Our complete range of in-home and mobile pet services take the stress out of trips to the vet ... for happier, healthier pets.



SCVS

South Coast
Veterinary
Services

Book a visit, manage prescriptions and pay online. Get in touch for more details.

Dr. Glynis Kuipers

0412 319 110

office@southcoastvet.com.au

www.southcoastvet.com.au