

Callala Bay NEWS

July 2024

Issue 129-2024

Monthly Magazine from the Callala Bay Community Association Incorporated



The Callala Bay NEWS *proudly supports your local community
by helping to fund projects that benefit all residents.*

Consider supporting us by subscribing for a small yearly fee.

Contact: editor.cbcanews@gmail.com



- Lawn Mowing • Irrigation • Fertilising • Aerating
- Tree Work • Landscaping • Hedging • Mulching
- Rubbish Removal • Domestic & Holiday Rental Cleaning
- High Pressure Water Cleaning • Garden & Yard Make Overs



• Commercial • Domestic • Rural Properties



0415 732 801

ABN: 16 821 580 073

andrew@atbcontractors.com.au

www.atbcontractors.com.au



Enrolment for children 2 to 5 yrs
Open 8am – 4.30pm
University & TAFE trained teachers
'School Readiness' curriculum
Fee rebates available to eligible families

Awarded 'Exceeding National Quality Standards' by the NSW Department of Education and Communities.

For further information please call us on **4446 6089**



**first
national**
REAL ESTATE

Callala

4446 4313



Callala First National has been servicing the local area for more than 19 years and continues to strive to provide a service above and beyond our clients expectations. If you are considering selling or renting your property contact our friendly team on 4446 4313 or drop into our office at 58 Boorawine Terrace, Callala Bay.
www.callalafirstnational.com.au

CALLALA BAY NEWS

*A monthly newsletter of the
Callala Bay Community Association Inc.*
ABN: 68 031 980 561
www.callalabaycommunityassociation.com
Email: admin@callalabaycommunityassociation.com
PO Box 14 Callala Bay 2540

CBCA Inc COMMITTEE

President

Morris Dickins

Vice President

Scott Horsburgh

Treasurer

Julie Morris

General Secretary

Jacqueline York

Minutes Secretary

Merry Dickins

COMMITTEE MEMBERS

Jacinta Flattery-O'Brien

Gary Chapman OAM

Sue Chapman

Melinda Listing

Kate Hartnett

Robert Hartnett

Sharron Horsburgh

Public Officer/CB News Editor

James Morris

Note from the Editor:

The CBnews proudly supports our community, consider subscribing for a small yearly fee.

Please contact us with any local issues or concerns with the intention of having it published.

INDEX

Culburra Beach & Districts

Men's Shed Page 4-5

Emergency Contacts Page 12

Bushcare Page 13

From the Doctor Page 13

Callala Community Garden Pages 14-15

Callala Markets Page 20

Culburra Beach & District

Garden Club Page 22

Community Contacts Page 34

MR MIKE SPARKLE BRIGHT

ABN: 50 534 685 256

Professional Window Cleaner



All Types of windows cleaned including Fly Screens, Window & Door Frames Tracks and Runners

We can offer our customers Solar Panel Cleaning (*single story only*)

Very Reliable • Free quotes

**Ring Mike on:
0406 467 026 or 02 4446 6684**



Scott Horsburgh

Ph: 4446 6544

18/55 Emmett Street
Callala Bay 2540

**Your Local Butcher
The Meat Specialist**



USE, LEARN & SHARE SKILLS

**CULBURRA BEACH &
DISTRICTS MEN'S SHED**

FIND US BEHIND THE POLICE STATION.



2024 is the Centenary Year celebrations for the CWA Nowra Branch



CWA Nowra Branch
- within a year of
being established
- had purchased a
block of land in Berry
Street, Nowra and
not long after raised
further funds for a
one room building

with a verandah and toilets. At the opening of the facility Mrs Morton told the gathering of 400 people that it was a room for the benefit of women of the district to use. In 1934 a baby health clinic nurse was employed at the CWA room and this service continued for 63 years. Were you one of those babies, toddlers and youngsters who attended the clinic? You may have been one of the teachers/students who participated in our international competitions. We would love to hear from you.

Along with our members, and the local community, we have been through the Great Depression, WWII, various overseas conflicts where our local service personnel have been assigned, floods, bushfires

and COVID-19 and the general 'ups and downs' of community life. We are happy to share our Nowra CBD venue with many other community groups throughout the year.

Our members work together to raise funds for the local community through various means; providing needed items (\$s and goods) to various organisations; regularly holds fundraising market days to sell the amazing craft projects, jams, pickles and cakes – all made and provided by our talented, creative, resourceful and caring members.

Our junior members are under 18 and we have a couple of older members in their 90s and every age range in between. We also hold handicraft, cooking, cultural, international and recycled item 'competitions' to keep those all important 'brain cells' working. Our rooms are open on Monday evenings 5-8pm and Tuesdays 8.30am-3pm, so please 'drop in' if you are 'in town' at 39 Berry Street (top of the laneway) and say hello.

CWA of NSW advocacy work adds to, and in many cases, leads the voices about better services (of all kinds) for regional, rural and remote New South

Wales. At our recent State Conference we had an emergency motion about measures to address the horrific domestic and family violence (DFV) rates. This year we are also giving back to the community, in other ways too – the mural is one. It faces the car park at the back of Roxy Cinema. More projects to come!

CWA Nowra

T: 02 4423 0992 (leave a short msg and we will get back to you)

E: nowracwa@gmail.com

FB: <https://www.facebook.com/NowraCWANSW/>



Tai Chi & Qigong for Health

Callala Beach Community Centre

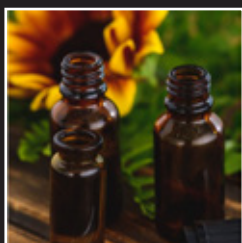
Tuesdays 11:30am

To Book contact:

Joanne

0416 271 408

- Feel the flow of vitality -



FirstLine Holistic Therapies

Do you suffer from one or more of the following?

- Diverticulitis, IBS, Ulcerative Colitis, Crohn's Disease, GORD, SIBO & SIFO, H.Pylori & other infections.
- PCOS, Endometriosis, Fibroids, Ovarian Cysts, Menorrhagia, Irregular periods, Amenorrhea, PMS, Peri and Post Menopause, UTI's, Benign prostatic hyperplasia & Erectile Dysfunction.
- Infertility (male & female).
- Acne, Eczema, Infections & Psoriasis.
- Insulin Resistance, Diabetes, Thyroid disorders, and Resistant weight loss.
- Hypertension, Arrhythmias, High Cholesterol, Atrial Fibrillation, Recurrent Kidney infections and any circulation issues.
- Anxiety & Depression.
- Recurrent infections.

Your local **Herbalist & Lifestyle Medicine Coach John Taylor** will get to the root cause of your health issues using herbal medicines, nutrition, mind-body techniques, and lifestyle factors. **Call John on 0400 665 948** or email rainbowrising999@gmail.com to arrange a face to face or online consultation.

Pottery by Ineke Brown

I've been crafting ceramics for more than 50 years and have been constantly inspired and influenced by ancient pottery objects often thousands of years old.

This pilgrim flask (no, it's not a wee bottle) is a wheel thrown piece which has been flattened on one side so it can be hung on the wall. Originally these bottles were used for water or oil whilst travellers were on pilgrimages, thus the name.

This particular flask is made of a clay which resists thermal shock as the piece has been fired to about 1000 degrees Celsius, then glazed with a relatively low temperature glaze and coloured with various oxides to provide the surface colours. The copper lustre effect occurs when the pot is taken out of the kiln at around 1050 degrees and placed in a drum with sawdust, leaves or other combustible materials. This gives a "reduction" atmosphere (lacking in oxygen) which affects the colours of the glazed surface and also penetrates the clay surface and carbonises it.

My lifelong fascination with clay continues to interest me and though I can no longer build kilns or produce large quantities of ware, I get enjoyment from creating more sculptural pieces in my studio at St George's Basin.

My current work encompasses objects such as large gum nuts, fish sculptural pieces and also functional ware such as noodle bowls, mugs and large bowls. I enjoy making marks and textures in the clay surfaces.

The glazes I use are inspired by the sea and sand colours of the coastal area where I live.

Ineke Brown
June 2024



YOUR AD HERE

Advertise Your Business With The **CBnews** Today!

Very Affordable Rates For All Businesses!

Contact the Editor for more info

admin@callalabaycommunityassociation.com

The Callala Bay News Publication is proudly funded by the Callala Bay Community Association with the help of our local business sponsors

Would you believe it?

I used to have a fear of hurdles, but I got over it

Did you know?

I'm so good at sleeping, I can do it with my eyes closed



Callala Gallery

15 Callala Beach Road Callala Beach

Open 10am to 3pm

Week Days & Weekends

Weekly classes in H2O Oils, Acrylics, Watercolours, Pyrography, Mixed Media, Mosaics & Clay Sculpting.

Workshops by appointment.

Artworks for sale by local Artists.

We do take Commissions & have a lay-by agreements.

Ph: 4446 5770 Mob: 0407 465 770

www.artclassesnowra.com

Callala Gallery on Facebook

Peter Rose EyeQ Optometrists

Visit eyeq.com.au for convenient online bookings

59 Kinghorne Street, Nowra

4421 4511



Peter Rose



Robert Rose

EyeQ
OPTOMETRISTS
your local experts in eyecare

JERVIS BAY FILM TRANSFERS

Records



Cassettes



Onto
CDs



VHS movies



onto DVDs



8mm Films onto USBs

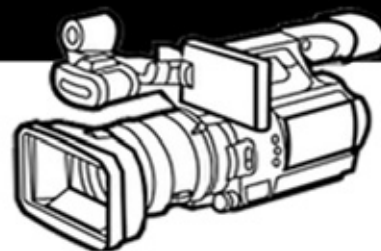
Convert CDs to Mp3s

Scan Slides onto USBs

Call: 0401076338

jervisbayfilmtransfers.com.au

Wedding Videographer



**We Build
Corporate
Websites**

FIONA PHILLIPS MP

Federal Member for Gilmore


I'm here to help with issues like Medicare, Centrelink, aged care and pensions, the NDIS, Veterans' Affairs and community grants. I can also arrange flags, and special birthday and anniversary messages.

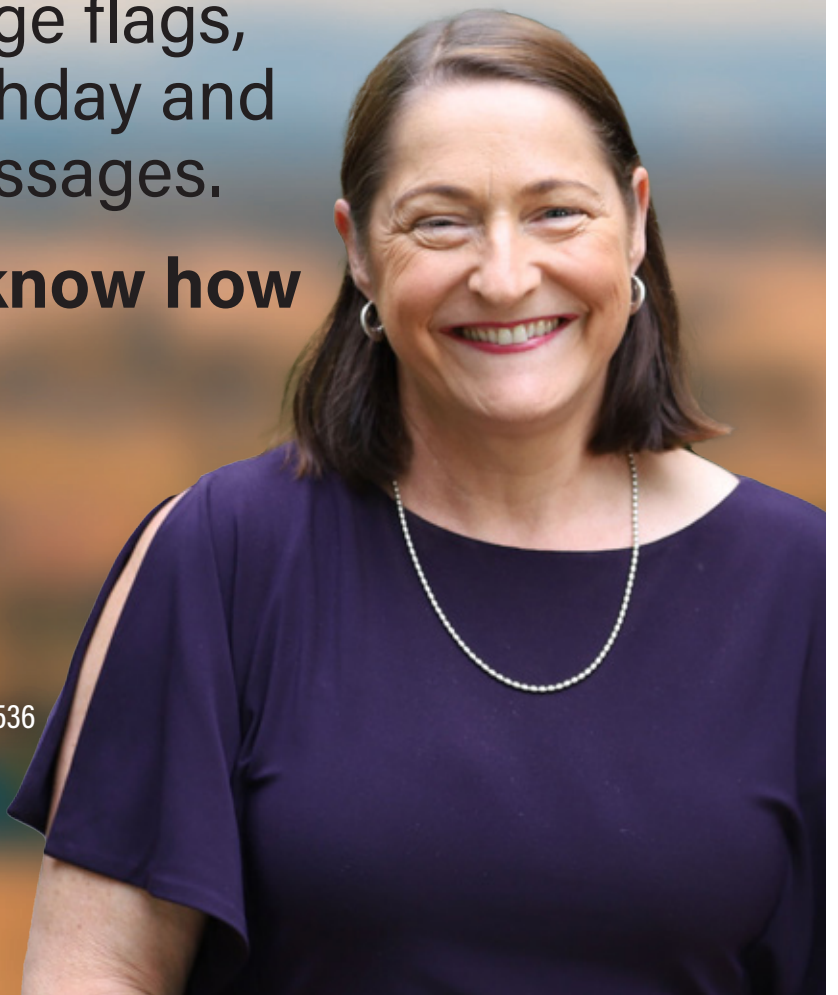
Please let me know how I can help you.

 **(02) 4423 1782**

 **Fiona.Phillips.MP@aph.gov.au**

 **fionaphillips.com.au**

 **3/59 Junction St Nowra NSW 2541 &
1/6-8 Orient St, Batemans Bay NSW 2536**



Authorised by Fiona Phillips MP, Nowra.



ANGLICAN CHURCHES of Culburra Beach | Callala | Currarong

Callala Church Service - 5pm Sunday

All Welcome | 4:30 pm for afternoon tea

St Marks, 2 Hunter Street, Callala Bay



Please contact us for more
information or visit our web site.

p: 02 4447 3277

e: office@culburraanglican.asn.au

www.culburraanglican.asn.au

Growth Group Bible Studies
Contact us for times and locations

Caterpillar's Playgroup
9:30am Friday @ Culburra Beach Anglican

289youth
Friday Nights @ Culburra Beach Anglican



Having problems with
your computer?

Hayton.Biz IT

Local computer
support & service.

Onsite IT & computer support for business and home users.

Experienced technicians, same day service, No call out charge for the local area* & competitive rates.

Laptop repairs/servicing also undertaken.

- Computer repairs
- General PC report
- Computer servicing
- General PC advice
- Internet problems
- Email setup
- Virus/malware removal
- Network configuration
- Domain registration
- Server installation
- Server support
- Backup configuration

0422 599 305

Call
Today

Culburra Beach Orient Point Men's Shed Inc.

The Shed by the Lake

Location: Old Scout Hall Cnr West Crest & Wollumboola Lane

NEW MEMBERS WELCOME

You are invited to join the Longest Established Men's Shed in Culburra, learn new skills and bring your own, come and enjoy the company of our friendly members and participate in a variety of activities

We are open 8:30am - 12:30pm Tuesday, Wednesday & Thursday

All enquiries: 0498 023 781

www.culburrabeachmensshed.org.au

Facebook: Culburra Beach Orient point Men's Shed <https://www.facebook.com/cbopmshed>



CLUB HOURS

Mo: 10AM - 7PM
Tu: 10AM - 9PM
We: 10AM - 10:30
Th: 10AM - 10:30
Fr: 10AM - 10:30
Sa: 10AM - 10:30
Su: 10AM - 9PM

43 Callala Beach Road, Callala Beach
02 4446 5313 clubcallala.com.au
generalmanager@clubcallala.com.au



for information & bookings, call us on
02 4446 5313 (option 2) or contact
callalagolf@bigpond.com
open every day pending weather

MONDAY:

Indoor Bowls - from 12PM

TUESDAY:

Veterans Golf - from 7:30 to 1PM

WEDNESDAY:

Callala Mixed Social Bowls - from 12PM

Ladies' Golf - from 8:30 to 1PM

FRIDAY:

Fitness Class - from 10:30AM

SATURDAY:

Mixed Golf Comp - from 7:30 to 1PM

EVERY DAY:

Barefoot Bowls \$15 per person,
includes equipment hire
kids aged 12 & under play for free

THURSDAY:

Bowls Raffle - tickets sold from 6PM

Bowls Schooner Draw - from 7:45PM

FRIDAY:

Mega 50 Meat Tray Raffle -
tickets sold from 6PM, drawn 7PM

SATURDAY:

Fisho's Raffle -
tickets sold from 12PM to 1:30PM

LAST SATURDAY OF MONTH:

Meat Tray Raffle -
tickets sold from 6:30, drawn 7PM

SUNDAY:

Meat & Seafood Raffle -
tickets sold from 4PM, drawn 5PM

accommodation now available at:



31 Callala Beach Road, Callala Beach
02 4446 5313 or 0460 543 859
beachandbaystay.com.au



Lunch Service:

Every Day From
12:00PM - 2:30PM

Dinner Service:

Tuesday to Sunday
5:00PM ONWARD
Monday (Pizzas Only)
5:00PM - 7:00PM

\$15 Lunch Specials EVERY DAY

Tuesday \$23 Rump Steak Night

Wednesday \$18 Chicken Schnitzel Night

Thursday \$20 Pizza Night

Saturday \$15 Club Beef Burger Lunch Special

Sunday Roast \$20 Lunch & Dinner

ALL WEEKLY SPECIALS DINE-IN ONLY

TUESDAY:

Happy Hour from 4PM - 6PM

Social Darts from 5PM

Trivia starting 6:30PM

THURSDAY:

Bingo from 11AM

Happy Hour from 5PM - 7PM

Pool Competition - rego from 6:30PM, starts 7PM

Member's Badge Draw 6:30PM, 7:15PM, 7:45PM

SATURDAY:

Live Entertainment Every Week

LAST SATURDAY OF MONTH:

Second Chance Draw & Members Badge Draw

SUNDAY:

Fisho's Weigh-In on 4th Sunday at 2PM

Callala RSL Country Fishing Club



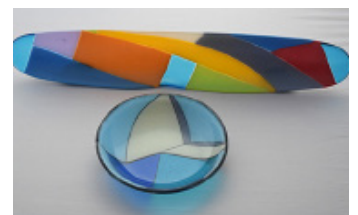
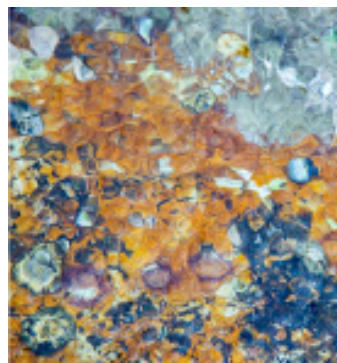
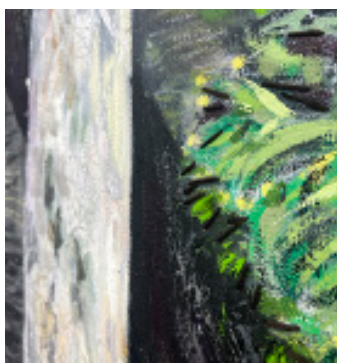
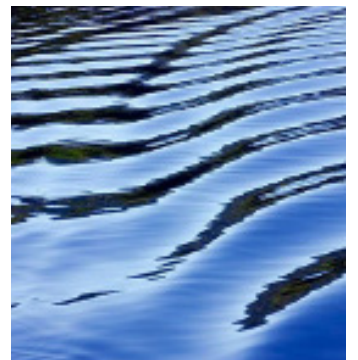
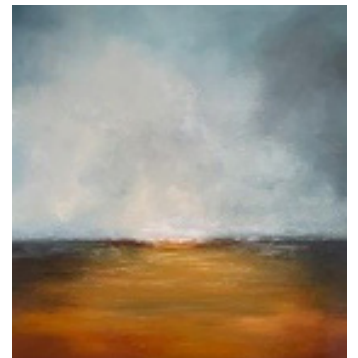
Callala Beach Road, Callala Beach 2540

**COURTESY BUS AVAILABLE FOR A GOLD COIN DONATION
SERVICING CALLALA BAY, CALLALA BEACH, AND MYOLA
MONDAY TO SATURDAY FROM 4PM, SUNDAYS FROM 3:30PM**



currarongarttrail.com.au

first Saturday of every month
10am - 2pm



Emergency Phone Contacts

Situation/Service	Phone Number	Website
Injury or Health Crisis	000	ambulance.nsw.gov.au
Motor Vehicle Accident	000	police.nsw.gov.au
Police	000	police.nsw.gov.au
Police – Non Emergencies	131 444	police.nsw.gov.au
Police Crime Stoppers	1800 333 000	police.nsw.gov.au
Household Fire / Hazmat	000	fire.nsw.gov.au
Bushfire	000	rfs.nsw.gov.au
Shoalhaven RFS District Office	4424 4424	rfs.nsw.gov.au
Bushfire Survival Plan	-	rfs.nsw.gov.au
Bush Fire Information Line	1800 679 737	-
Flood, Storm and weather warnings	-	bom.nsw.gov.au
Storm / Flood	132 500	ses.nsw.gov.au
Power Outages	131 003	endeavourenergy.com.au
Main Road Closures	132 701	livetraffic.com
Local Road Closures	1300 293 111	shoalhaven.nsw.gov.au
Shoalhaven City Council	1300 293 111	shoalhaven.nsw.gov.au
Shoalhaven City Council After Hours	4421 3100	shoalhaven.nsw.gov.au
Shoalhaven Hospital	4421 3111	-
Milton Hospital	4455 1333	-

If you are **deaf** or have a **speech** or **hearing impairment** dial **106** for the Text Emergency Relay Service

Useful Apps & Websites

Visitors to the area can download the following free mobile apps to stay informed of the latest advice and information in the event of an emergency.

Emergency+ App

The Emergency+ app is a free app developed by Australia's emergency services, Government and industry partners.

The app uses GPS functionality built into smart phones to help a Triple Zero (000) caller provide critical location details required to mobilise emergency services.



emergencyapp.triplezero.gov.au

Other Helpful Apps & Websites



Fires Near Me NSW



Floods Near Me



Weather Zone



COVID Safe



BOM



Marine Rescue



Live Traffic



Facebook



Twitter



DISASTER DASHBOARDS



shoalhaven.disasterdashboards.com/get-ready/overview



Bushcare

It's been a quiet start to winter for our Bushcare team. The cooler, wetter season has brought both challenges and delights in our Callala bushland - gumboots have been necessary! We've also moved our start time from 8am to 9 am each Tuesday, given the chilly early mornings.

While the rainy weather may have limited our bush regeneration work, the bushland itself has been revelling in the increased level of rain. It has been fascinating to watch the spread of wet weather loving natives like Maiden Hair Fern and various Basket Grasses. I was going to include a photo of several large ferns which have been revelling in the wet and are growing along the narrow drain running into Boorawine Reserve at the end of Mitchell Rd. However I now realise I have some research to do. We had been calling these 'King Ferns', however online reading reveals that King Ferns only grow in Queensland, the far North Coast of NSW and the Northern Territory. Hopefully by next month I will have a definitive ID our our Callala big ferns.

Winter is the time when Bushcare teams are encouraged to plant tube stock seedlings from the Bushcare Nursery at Crookhaven Heads as part of our regular activities. The reason being that putting young tube stock into the cool soil gives the little plants a couple of months to settle and get comfortable before the warmth of Spring provokes the growth of both roots and branches/leaves. Experience has shown that this results in more vigorous plants with a higher survival rate than those planted in the warmer months.

As I've written about previously, our team has been able to plant out some Sea Lavender tube stock along the banks of Callala Creek at the end of Lackersteen St. About half a dozen of these little plants have survived the early winter tidal surges.

We have also done some planting in Boorawine Creek Reserve. Mostly these are small shrubs or grasses. We put plant 'guards' around some low growing Rhagodia as experience has shown this shrub is very applying to rabbits in its early growth stage. The other species that we've protected with plant guards are Indigofera australis/native indigo. This shrub can grow 2 metres by 2 metres and when mature has lovely

purple flowers - however I think the lush, healthy seedlings we sourced from the nursery would appeal to both rabbits and kangaroos, so they have been given plant guards.

The offer continues by our team to give anyone interested in doing bush regeneration work a tour of the sites where our Callala group work. My name is Diana and my phone number is 0419 531 902.

From the Doctor

Lately, I have had patients enquire about the new vaccines for the RSV virus (Arexvy). RSV is a highly contagious viral infection that can spread easily. When an infected person speaks, coughs or sneezes, their infectious droplets can be breathed in by others. RSV commonly affects children; however, it can also cause severe illness in older adults. The RSV vaccine is currently available as a single vaccination to people aged 60 years and older. Unfortunately it is not covered by the National Immunisation Program, and a quick search shows the vaccine to be advertised for around \$350. Who is recommended to receive an RSV vaccination?

- All adults aged 75 years and older
- Aboriginal and Torres Strait Islander people aged 60 – 74 years
- Adults aged 60 to 74 years with medical conditions that increase their risk of severe disease due to RSV, such as:
 - Cardiac disease
 - Chronic respiratory conditions
 - Immunocompromising conditions
 - Chronic metabolic disorders
 - Chronic kidney disease (stage 4 or 5)
 - Chronic neurological conditions

If you wish to find out more about this, please contact your friendly team at Callala Medical Centre on 4446 5350

News of the month
We can all rest easy –
the inertia club is not moving

Contacts:

• Victoria Maudson 0424 590 105 • Gail Fitzgerald 0412 930 080 • Megan Hodges 0433 668 453

JUNE NEWS

Purple climbing beans are just starting to be picked. (1st crop) prepared and eaten like green beans. Sadly, they can lose their beautiful purple colour when cooked.

Borlotti beans are a climbing bean that I don't think we have grown before. They are called several names including cranberry bean. The whole bean pod can be harvested when young and tender, but are most often grown for their internal legumes similar to kidney beans. When harvested and used fresh, their outer coating is peeled off and put in the pot, however they can be dried and last for a long time, But in this instance must be soaked before cooking. They are very attractive with their red speckled appearance.

Broccoli Spigariello is an Italian variety recently featured on Gardening Australia. Diana was keen for us to try growing it, as the leaves can be continually harvested and it doesn't produce florets for eating. The spigariello is living among 'Mini Cabbage', brussel sprouts and kale.



The Ruby Chard has been raised using Heirloom seed. This one has taken a while to flourish but now seems to be producing healthy leaves. Such an attractive plant with its ruby stems contrasting with the deep green leaves. It is getting plenty of full sun (when we have it!) in its current location

Both varieties of potatoes in beds 6 and 19 have emerged. Those in the large black upright compost bin are looking particularly good. The earth bin is nice and deep and light tight. Ideal conditions. As the leaves grow up to the light, layers of soil, straw and compost are carefully added to create a bigger crop..

Garlic has now been separated and planted into pots. There are a few differences in this technique to our more conventional separating of cloves off the bulb, and planting into full-sized beds. It will be of great interest to see how these cloves, planted with their shoots and roots already developed, compared to the others. - a nice thing to follow, but we have to wait a few months.

The first generation of snow peas and sugar snap peas have been delicious eating, however are nearing the end of their productivity. The leaves and flowers have also been impacted by the persistent rain we are experiencing. Fortunately there are some new, young plants coming to maturity that are about to provide us with tasty pods.



We have found that planting the next seeds

between 3 - 5 weeks from the first seeds, can ensure ongoing supply. It's not an exact science however! The plants start producing in around 2 months and continue for a few weeks, depending on the environmental conditions. Sometimes we need to train them onto their mesh supports until the tendrils grab hold. Otherwise we can have a tangled mass, making harvesting difficult and inhibiting air flow between rows. Snow peas are always a hit with us here at the garden.

GREENACRES HELPERS

Tuesday mornings sees the garden buzzing with activity as we host our helpers from Greenacres Shoalhaven, a disability support group.

This mixed ability group help with planting, watering and harvesting our produce, just to name a few tasks. Sometimes we just sit and have a chat.

We really enjoy welcoming these helpers to the community garden.

CCG is a warm, inclusive safe space for all.



HOW AND WHEN CAN I JOIN IN? CAN I GET MORE DETAILS?

When the gates are open, **PLEASE COME ON IN! REGULAR OPENING TIMES EVERY MONTH**

The Family Fun Fridays will be on **28th Jun & 26th July**.

Bring the kids along for fun and food.

Each Tuesday and Thursday mornings from 8.30 – 12ish

Saturday 6th July will be our General Meeting at 2 p.m.

Sunday July 7th & Sunday 21st July from 10.00 until lunch time for a normal Working Bee.

Friday 12th July There will be a Pick and Prep Afternoon from 3.00 p.m.

Saturday 13th July The Produce Stall operates from 8.00 till 12 noon.

Fresh produce, potted plants, cakes, herbs, pickles, jams and honey.

WE NEED MORE VOLUNTEERS

Do you have ANY free time that you would like to spend being useful in our Community Garden? No previous experience required!

You don't need to bring gardening know how, just enthusiasm.



Callala Bay Pharmacy

2/55 Emmett Street, Callala Bay 2540 Ph: 4446 4251

Hours: Mon-Fri 9am-5.30pm; Sat 9am -12.30pm

Friendly, professional service

- Diabetes Australia supplies • Baby weighing • Gift lines
- Blood pressure monitoring • Medication packing

FREE delivery every Thursday to Callala Bay, Callala Beach and Currarong

Dr John C Wright B.V.Sc.

CULBURRA VETERINARY CLINIC

7 Weston Street, Culburra Beach

9am-11am weekdays

4-6pm Mon, Tue, Thurs

4-5pm Wed, Fri

10am-12pm Sat

CALLALA VETERINARY Consulting Room

22 Emmett Street Callala Bay

1-3pm weekdays by appointment

Please phone: **4447 3851** for appointments, enquiries or after hour calls



E & S Painting Services

- Interior & Exterior Painting
- Friendly Local Service
- Excellent Rates
- Quality Assured

M: 0422 560 696 H: 4446 5056

Graham Worts



Vinnies

CALLALA BAY SHOP

- **High quality second-hand items**
- **Clothing, bric-a-brac, books, linen, beach towels, toys, games, DVDs, jewellery and much more!**

VOLUNTEERS NEEDED

**YOUR TIME IS THE MOST VALUABLE
GIFT YOU CAN GIVE.**

For details of how you can help,
visit www.vinnies.org.au or pop into the shop
for an application pack.

Find us at: **59 Emmett St, Callala Bay**

Opening hours: **Monday to Friday – 8.30am to 4pm,**
Saturdays – 8.30am to 2pm (during summer/peak times only)

**We welcome donations of non-bulky items during opening
hours. For pickups, please call 4421 7244.**

Route

120



Currarong, Callala Bay, Callala Beach, Myola to Nowra and Bomaderry

Departs	School Days		Monday to Friday		Saturday and School Holidays			
	AM	AM	AM	PM	AM	AM	PM	PM
Currarong	♂		♂	♂	♂	♂	♂	♂
Crookhaven Pde	N/A	7.15 T	8.25 T		8.00			
Yalwal St	N/A	7.16 T	8.26 T		8.01			
Tennis Court	N/A	7.17 T	8.27 T		8.02			
Progress Hall	N/A	7.18 T	8.28 T		8.03			
Cambe & Nowra Rds	N/A	7.20 T	8.30 T		8.05			
Callala Bay								
Sydney Ave	6.04	7.35 T	8.47	10.10	8.20	10.10	1.45	
Boorawine Terrace	N/A	7.30 T	8.40	10.13	8.23	10.13	1.48	
Emmett Street Shops	5.58	7.30 T	8.46	10.16	8.26	10.16	1.53	
Callala Public School	N/A	7.35 T	8.45	10.17	8.27	10.17	1.54	
Lackersteen and Emmett	6.02							
Callala Beach / Myola								
Queen Mary Street	N/A	7.15 T	8.15	10.20	8.31	10.20	1.58	
Catherine St Myola	N/A	7.20 T	8.20	N/A	8.36	N/A	N/A	
Sir Henry Crescent	N/A	7.22 T	8.23	10.23	8.40	10.23	2.02	
Callala Beach Shops	5.51	7.25 T	8.25	10.25	8.42	10.25	2.04	
Watts and Lennox St	N/A	7.27 T	8.28	10.28	8.45	10.28	2.07	
Mayfield		7.40 T						
Stewart Place Nowra	6.43	8.20	9.20	11.00 #	9.20	11.00 #	2.55	
Bomaderry Rail	6.33	8.15	9.30	11.10 #	9.30	11.10 #	2.40	
Nowra Tafe		8.20	9.32					
Stocklands Nowra	N/A		9.40	#	9.40	#	2.50	
Train Departs Weekdays	6.43	8.17 & 9.20	10.00*	11.23 & 12.00pm*	10.00*	11.23 & 12.00pm*	16.12	
Train Departs Saturdays					10.31	12.29	16.33	

* Bus Service 737 Bomaderry Station to Kiama Station

T Transfer at Shoalhaven High School for Nowra and Bomaderry

Drops only as Required.

SERVICES DO NOT OPERATE SUNDAYS AND PUBLIC HOLIDAYS

T Transfer at Callala School for Nowra and Bomaderry

Route

120



Nowra and Bomaderry to Callala Beach, Myola, Callala Bay and Currarong

	Monday to Friday		Monday to Friday		School Days		Saturday and School Holidays			
	AM	PM	PM	AM	AM	PM	AM	PM	PM	PM
Train Arrives Weekdays	8.40* & 9.15	11.40* am & 12.2	1.40* & 2.17				8.40* & 9.15	11.40* am & 12.27	1.40* & 2.17	17.10
Train Arrives Saturdays							8.19	12.21	2.19	
Departs	♂	♂	♂				♂	♂	♂	♂
Stewart Place Nowra	9.20	12.20	2.55				9.20	12.20	2.55	5.24
Bomaderry Rail	9.30	12.32	2.40				9.30	12.32	2.40	5.17
Nowra Tafe	9.32	12.34		3.30 \$473						
Stocklands Nowra	9.40	12.40	2.50				9.40	12.40	2.50	5.34
Mayfield				3.55						
Callala Bay				\$473						
Callala School	10.17		3.35	4.11	10.17					#
Sydney Ave	10.10		3.43	4.05	10.10					N/A
Boorawine Terrace	10.13		3.40	4.08	10.13					#
Emmett Street Shops	10.16		3.35	4.10	10.16					
Callala Beach				\$473						
Queen Mary Street	10.20		3.46 T	4.22	10.20					N/A
Catherine Street Myola	N/A		3.51 T	4.27	N/A					N/A
Sir Henry Crescent	10.23		3.55 T	4.30	10.23					N/A
Callala Beach Shops	10.25		3.45 T	4.21	10.25					#
Watts, Lennox Road Loop	10.28		3.42 T	4.18	10.28					N/A
Currarong										
Cambe & Nowra Rds			3.50 T	4.20 T						N/A
Progress Hall			3.53 T	4.23 T						N/A
Tennis Court			3.55 T	4.24 T						N/A
Valwal St			3.57 T	4.25 T						N/A
Crookhaven Pde			4.00 T	4.26 T						N/A

* Bus Service 737 Kiama Station to Bomaderry Station.

T Transfer at Callala Bay for Callala Beach, Myola and Currarong.

Drops as Required.

T Transfer at Callala Bay for Currai \$473 Bus for Callala Bay, Callala Beach, Myola and Currarong.

SERVICES DO NOT OPERATE SUNDAYS AND PUBLIC HOLIDAYS.

Callala Markets

The June Callala Markets were entertained by the “Yukalallas” who provided us with some great music, performed by some very talented ladies from our local community

The weather was ultimately very kind to us after a terrible week of closed roads and flooding. Unfortunately, a lot of our outside stall holders couldn't attend as the surrounding grounds were still soggy.



*Yukalallas perform on stage
at Callala Markets*

Our usual co-operation with the Callala Community Garden on Markets Day was also disrupted by the wet weather. We hope to see them back in July with their range of fresh seasonal produce; a big attraction for local households.

The next Callala Markets will be held on Saturday 13 July from 8am to 1pm at the Callala Community Centre, Emmett Street, Callala Bay. It's getting cooler but we hope for clear skies and want to see lots of locals and visitors. Come down early and enjoy an egg and bacon roll on a brioche bun, then grab a bargain, or that special bespoke gift for the home.

Our Markets support the local area with regular donations to community organisations, as well providing an outlet for local artisans. Buy local, support local!

Want to join us? Contact Sandra on 0413 581419 to book your stall.



2nd Saturday

EACH MONTH

**42 EMMETT ST,
CALLALA BAY**

8:00AM - 1:00PM





Tennis @ Callala Bay



Fancy a hit?

Located here in Callala Bay, the courts are attached to, and managed by the Callala Bay Progress Hall. They are located at the corner of Wearne and Morton St.

Bring your own rackets and balls!

Ring 444 64 313 to book

Available for casual and regular bookings.

Lessons—call Daisy on 049 053 7551

Culburra Beach & District Garden Club Inc.

Hi everyone,

President Bev thanked all the brave members who managed to attend a very wet June meeting. Inside the church two aircons generated warmth and we felt so cosy that the weather was quickly overlooked. We were asked to wear pearls as this is one of the June birthstones and members were invited to share their story about their pearls. The other birthstone is the Alexandrite which editor Christine informed us is a gemstone which changes colour- green in sunlight and red in incandescent light. We also had to showcase Camellias for the display table and most of the them were "pretty in pink" shades.

Part of our meeting involves a 5 minute talk and this month Pat Gleeson took centre stage. She is one of our golden girls (in her 90's) who recently travelled to Hawaii with her family. Pat toured around the islands, saw turtles on Sandy Beach which is made up of black sand and rocks, attended a Luau, visited Pearl Harbour and the famous Waikiki Beach in Honolulu. A favourite highlight visiting the Cheesecake Factory in Honolulu.

This month Mel featured Zina's garden. Zina is a very generous people, always happy to share cuttings and plants. Zina's backyard is the beach- the constant sound of waves, the view, an abundant bird life and a much loved kangaroo named Skippy- what else could you ask you for? Mel and Zina took us on a tour starting with her large pink Bouganvillea, Bird of Paradise, Crucifix orchids, Hippeastrums, and a magnificent Lilac tree. In summer Zina puts ice around the roots to keep them cold as Lilacs prefer a cold climate. Near her front steps are pots of colour with Kalanchoes and other flowering succulents. We thanked Zina for sharing her garden. During question time regarding garden problems/ queries a member brought in a large seed pod full

of seeds and wanted it identified. The plant popped up in her garden but has since died back. It is the Formosa Lily- *Lilium formosanum*, also known as the Taiwanese lily, and is endemic to Taiwan. This lily is a flowering bulb, and the white flowers are typical trumpet shaped. The flowers produce long cylindrical seed capsules with flat disc-shaped seeds that are easily dispersed by wind and water. In the book "Weeds of the South Coast" from Shoalhaven Council it is classed as an invasive bulb because it is becoming widespread. In summer you can spot the lilies easily on the headland at Callala Bay as you follow the footpath. Even a single plant in bushland can become the nucleus of a new weed infestation. Controlling this plant is difficult. It's like trying to remove onion weed(my pet hate) where you need to ensure the whole bulb and the bulblets are removed. You can at least bag the seed heads (capsules) and put them in your bin.

*****Don't confuse this plant with the November Lily (*Lilium longiflorum*) or the White Lily (*Lilium candidum*). They also have white trumpet like flowers, but they are not weeds or invasive.***



*Formosa Lily (*Lilium formosanum*)*

You are welcome to attend our next meeting on Saturday July 20th, 1.30pm at Culburra Anglican Church, Penguin Head Rd, Culburra Beach Cheers to all and happy gardening, Doris Carpenter 4446 5631



The Point Gallery Craft

76B Greenwell Point Road Greenwell Point NSW 2540

**Extensive Art and Craft Made in the Shoalhaven
Exhibition space available on a calendar month basis
Tourism Ambassador for the Shoalhaven**

**Normal opening hours 10am-4pm Friday – Monday ur
COVID Hours 11-3 Friday, Saturday & Sunday**

For further information

Contact: 0400998610 or 0418249148



CALLALA YOGA & PILATES

.....))) ● ((.....)

WEEKLY CLASSES
OCEAN VIEWS

CALLALA BEACHFRONT HALL, 89 QUAY RD
EMAIL CARLA@THESTATEOFCALM.COM
FOLLOW @THE_STATE_OF_CALM
CALL 0422 433 159



WAYNE'S WELDING

ABN: 72 721 264 751

Wayne Birt

Aluminium or Steel Boat Repairs

Trailer (box or boat) Repairs

MIG and TIG

Custom work for cars, boats or caravans

Phone: 0407 203 041

OVER 50? RETIRED?

**Invest \$25,000
in my not for profit
boating/tourism venture
and buy a partnership in
a hands-on business-
hobby and interest.**

**for full details see website:
www.wooden-boat-charter-australia.com.au
*The Time Warp River Cruise Company***

Thinking of having a function or meeting . . .



Why not have a look at the Callala Community Centre?

There is table seating for 110 with crockery and cutlery and a modern kitchen.

The centre is airconditioned and has state-of-the art audio visual capability for presentations, training and other entertainment included as part of the hire fee.

Car-parking is adjacent to the Centre and the Callala shops are opposite the Centre.

The Centre has grass surrounds, giving you the option of outdoor training as well as indoor.

If you have an exercise or social group or are looking for a place to hold your next celebration, call Cynthia on **0412 121 737** for enquiries. You can also look for us on **Facebook**

FREE

Pre-Loved Clothing & Book Stall

First Saturday of the Month
at the

Callala Community Centre

9.30am to 12.00 NOON

Clothes in good condition can be dropped off at the stall (on the day only). If clothing can be delivered by 10am; this will allow them to be displayed.

Sponsored by the Anglican Church, Callala

Artists' Market

The whole idea for an Artists' Market came about when discussions found that there weren't too many places in our community that artists could display their work. After much thought and negotiation, the Callala Community Centre was booked, and the invitations went out. The responses were quick and on Sunday 9 June, sixteen wonderful artists displayed their creative talents to a very appreciative audience.

After days of rain, the sun shone brilliantly, not to be outdone by the presentation in the Centre by our artists. The skill set was amazing, ranging in scope from traditional oils, acrylics, pastels, pen and ink, to include photography, pottery, glass engraving, shells designs, woodwork and textiles.

From conversations with guests and visitors, as well as the artists, the event was a creative success. The artists had the opportunity to not only display their work, but talk to their clients about processes, thoughts and outcomes. It is estimated that over 250 people visited the Centre on Sunday to discover what gems lay inside.

As this event was so successful, the artists have requested another Artists' Market to occur during the Long Weekend in June next year.

Our thanks therefore go to our creatively talented artists for their contribution in our first Market.

The organisers' thanks also go to the Callala Bay Community Association for their sponsorship, and special thanks should be given to Jim, Julie and James who were present during the day and assisted in the set up and clean up.



Callala OOSH By Katie

Callala Before and Afternoon Care for
school-aged children by qualified and
caring staff.

For information please call Katie-

0419917793 or 0427976669

email: callalaooshbykatie@gmail.com



Callala Bay
Open 7 Days A Week
Market-Fresh Fruit and Vegetables
Lotto Newspaper ATM

Ph: 4446 4811

It Pays to Shop Independent

Located in Bayview Plaza, 55 Emmett Street, Callala Bay

How the locals like it.

The Anglican Parish of Culburra Beach

Anglicare Op Shop

Shop 3/4 Weston Street, Culburra Beach

Opening Hours:

Mon-Fri 9am - 4pm

Sat. 9am-12pm

** Closed Public Holidays*

Clothing, bric-a-brac, books, toys, linen, games, DVD'S, jewellery and more.

EFTPOS available

Saleable Goods are most welcome, but we can't accept furniture, white goods, mattresses, encyclopedias, computer ware and videos.



You can drop goods at shop or in charity bin situated at Culburra Anglican Church,
Penguin Head Rd, Culburra.

If you would like to volunteer, please contact

Manager Neroli McCusker:

4447 4084 (Shop) or 0401 466 590



WELCOME to the Callala Community Centre, conveniently located opposite the shops in Emmett St, Callala Bay.

We are one part of the Shoalhaven Community Information Network (SCIN). Our technology has been upgraded to include solar panels, a storage battery, and satellite communications to provide an independent, continuous, communication solution with the Nowra Emergency Centre.

The information can be seen on the screens located at the Centre.

An audio-visual system has been installed in the Centre offering flexible and comprehensive facilities, including;

- **blue tooth; computer connectivity; the ability to operate DVDs and CDs and play personal audio-visual files from a USB drive or SD memory card.**

If you want to have a wedding; memorial service; business conference; group gathering or family reunions the Callala Community Centre is well worth considering.

Our facilities include

- **A well-equipped kitchen; air conditioning; raised stage and off-street parking, and**
- **Crockery, cutlery and glasses and seating for up to 120 people**

**For all hiring enquiries contact Cynthia on 0412 121 737
or email cynirwin974@gmail.com**

Follow us on Facebook at Callala Community Centre.

Callala Bay Progress Hall and Tennis Court



Looking for a venue with history and charm?
Available for both casual and regular hire
*Recently renovated ... and now with new audio visual
equipment available! Reasonable rates.*

Bookings Ph: 444 64 313
or via Facebook
75 Boorawine St, Callala Bay

Regular Community Users

Dru Yoga: Monday (2:45pm)
Craft Group: Tuesday (10am)
Friends of Dance: Tuesday (2:30 pm)
Yoga: Thursday (9am)
Tai Chi: Saturday (8am)

Lyn ph 0419427574
Yvonne ph 444 66 280
Ann ph 0418 477828
Anna ph 0405 102 234
Jenny ph 04477 43179

Tennis Lessons: Saturday (midday)

Daisy 0490 537 551

<https://callalabayprogresshall.weebly.com/>



Crookhaven Mechanical Repairs



4447 5845



FREE Pick - Up Callala - Bay - Beach - Myola

We Can Service Your NEW Car AND Protect YOUR Warranty

Major Trip Prep - Suspension Upgrades - Bullbars - Accessories



ARC-AU21881



crookhavenmechanical.com.au



MVRLic35947





Callala Public School Parents & Citizens Association Inc.
Emmett Street, Callala Bay, NSW, 2540
callalapandc@gmail.com

Callala Public School P & C Canteen Volunteers Needed

Callala Public School's canteen is operated by the P&C with all profits invested back into the school.

It is a purely volunteer run canteen, with Dan Applebee being our manager who looks after the daily running of the canteen along with the help of other volunteers.

At the present time we only have one other volunteer. In order to keep the canteen operational we need more volunteers. If you have time to spare 9am - 12, be it once a week, fortnightly, monthly or even once a term we would love your help.

Duties include preparation, heating and serving of lunch orders, assisting with window sales at 1st break and some light cleaning.

To volunteer in the canteen you are legally required to complete the following:

Working With Children check, which is obtained through Services NSW. It's free as you are a volunteer.

<https://www.service.nsw.gov.au/transaction/apply-for-a-working-with-children-check>

Food Handler Basic Training online through NSW Food Authority

<https://www.foodauthority.nsw.gov.au/training/food-handler-basics-training>

Can you help us? It's only 3 hours and 15 minutes. For more information or assistance in completing the online forms please contact the school office on 44464352 and one of our P & C representatives will contact you, or email us at callalapanc@gmail.com

We look forward to meeting you.

Shoalhaven damage following latest natural disaster

Published on 12 June 2024

A natural disaster has been declared for the Shoalhaven following the severe weather that significantly impacted parts of the region on Thursday 6 and Friday 7 June.

Areas worst affected by flooding include Greenwell Point, Sussex Inlet, Sanctuary Point and Old Erowal Bay where a culvert and road pavement failure has closed The Wool Road.

Carey McIntyre, Director City Services, said that while the damage across the city were still being assessed, the repair bill is expected to run into the millions.

“This is the Shoalhaven’s 15th natural disaster in the last four years, and they continue to have a major impact on our communities through damage to properties, infrastructure and the environment,” Mr McIntyre said.

“The flood damage will take us many months to clean up and repair, while putting a strain on our finances at a time when we can least afford it,” he said.

Mr McIntyre said the residents of the Bay and Basin area were feeling the impact of the flooding after a road collapse on The Wool Road between Vincentia and Old Erowal Bay.

“This is a live situation that is evolving. Our staff understand that this is a priority road and have been doing everything possible to start remediation as soon as possible,” Mr McIntyre said.

Detours are in place via Tomerong but adding 20 minutes to trips. School buses and transport links are being maintained via alternative routes.

A very preliminary consideration of the damage indicates the rehabilitation of this key road could take up to 10 months to repair, with interim crossings, if they are possible, or shuttle buses being considered in the short term. Preliminary cost estimates are in the order of \$1.2 million to repair. The community can subscribe for updates from the dedicated project page.

Other major road damage across the region include:

- South - Matron Porter Road in Milton
- Central - Yerrigong Rd, Ocean Street Culburra, Crookhaven Pde, Yarramunmun Bridge access road, Wattle Creek fire trail, Bamarang Rd, Forrest Rd and Greenwell Point Rd.
- Basin - The Wool Rd, Naval College Rd, Grange Rd, Mortimer Rd, Falls Rd in Falls Creek, Pine Forest Rd.
- North - widespread pavement deterioration, scoured drainage and debris





The new Sharp printer has been purchased through the generosity of a grant from the Veolia Mulwaree Trust.



Callala Physiotherapy and Pilates

Pre and Post-operative Rehabilitation | Reformer Pilates
Sporting injuries | Arthritis management

www.callalaphysiopilates.com.au

Phone: (02) 4413 0349 Email: info@callalaphysiopilates.com.au



Specialising in all aspects of real estate, Property One Realty has had a local presence for over 20 years. We offer sales, holiday and permanent rent services. Contact our team or stop in to discuss the best options for your investment.

Ensuring your next move is a positive one.

www.propertyone.com.au

44466800 | callala@propertyone.com.au | 9/55 Emmett Street, Callala Bay

COMMUNITY CONTACTS

Emergency Police Fire Ambulance: 000

Nowra Police Local Area

Command: **4421 9699**

Crime Stoppers: **1800 333 000**
(anonymous reporting)

Police Assistance Line: **131 444**
(non emergencies)

State Emergency Service: **132 500**

Jervis Bay Marine Park: **4441 7752**

Callala Doctor's Surgery: **4446 5350**

Shoalhaven City Council

General enquiries, business hours: **4429 3111**

Emergencies and after hours: **4421 3100**

Justices of the Peace

Howard Duncan: **4446 6535**

Dallas McMaugh: **0400 189 875**

Culburra Beach & District Garden Club

We meet every 3rd Saturday of month
Feb-Nov at 1.30pm

Venue: Culburra Anglican Church
Penguin Head Rd, Culburra Beach.

For more details contact

Doris Carpenter: **4446 5631**

Culburra & Districts Community Health Service

Visit the Op Shop and pick up a bargain!
Proceeds help maintain the Medical Bus that transfers people to Nowra for medical appointments from Greenwell Point, Culburra Beach, Callala Bay & Beach, Currarong and Myola.

Please contact Culburra Pharmacy on **4447 2382** to arrange transport.

Culburra Beach & Districts Men's Shed

Location: Beside the Banksia Community Hall, off Fred Evans Lane, Culburra Beach (IRT entry). **Open:** 8.30am to 1.00pm, Monday and Wednesday.

All enquiries: Phone **0494 055 329** or email **CBDMS1@outlook.com**

Culburra Beach Orient Point Men's Shed Inc.

Location: Old Scout Hall Cnr West Crest & Wollumboola Lane

Open 8:30am - 1pm Tuesday, Wednesday & Thursday

All enquiries:

John Castellan: **0498 023 781**

Max Ford: **0403 204 847**

Callala Community Garden

52 Emmett Street Callala Bay
Opposite The Shops

Victoria Maudson: **0424 590 105**

email: callalacommunitygarden@gmail.com

 /groups/CallalaCommunityGarden

Drop In's welcome

DISCLAIMER

The Publisher, known as Callala Bay Community Association Incorporated, does not accept any responsibility or liability in any way whatsoever with regard to any of the paying advertisers contained in this newsletter. Additionally the views and comments of all reports submitted are the responsibility of the person/organisations submitting same, including those from SCC (Shoalhaven City Council), which are usually copied verbatim from correspondence and are included for your information. The reports do not necessarily reflect the views of the Publisher.

Truck & Forklift Driving School

Desire Bhugon

RMS Approved: LR, MR, HR, HC (Auto
and Manual)

OLDER DRIVER ASSESSOR



Tel: 02 444 66861 Mobile: 0418 654 572 Email: desdschool@bigpond.com

Same house, fresh start

First home, second home, refinancing or renovating, you'll get everything you need and more with a Bendigo Complete home loan.

Come home to a low rate loan.

Chat to a home loan specialist today or search Bendigo Bank Home Loans.

 Community Bank · Nowra & District 02 4422 7574



 **Bendigo Bank**

Terms and conditions, fees, charges and lending criteria apply. All information including interest rate is subject to change without notice. Full details available on application. Credit provided by Bendigo and Adelaide Bank Limited ABN 11 068 049 178 Australian Credit Licence 237879. (1676246-1704263) OUT_13120216 , 10/03/2022



Vanessa Middleton

Licensed Real Estate Agent

0492 945 367

vanessa.middleton@ljhooker.com.au

nowra.ljhooker.com.au

 **LJ Hooker**

Vanessa is a well known face in our community, a **local of Callala for 28 years** and working locally in real estate for the past **17 years** with extensive knowledge and insight into the local market. Her dedication to customer service, innovation, honesty and openness have been the cornerstones of Vanessa's record of success over many years. Known for her friendliness, understanding, enthusiasm & strong negotiation skills.

A consistent number of repeat referrals is a testament to her expertise.

If you are looking for a local in real estate for buying or selling contact me today.

Happier, healthier pets

South Coast Veterinary Services
is your local, independent and
exclusive veterinary care provider.

Our complete range of in-home
and mobile pet services take the
stress out of trips to the vet
... for happier, healthier pets.



SCVS

South Coast
Veterinary
Services

Book a visit, manage prescriptions and
pay online. Get in touch for more details.

Dr. Glynis Kuipers

0412 319 110

office@southcoastvet.com.au

www.southcoastvet.com.au