

Callala Bay NEWS

January 2022

Issue 101-2022

Monthly Magazine from the Callala Bay Community Association Incorporated



26 January

Breakfast by the Bay

Brought to you by -
Callala Bay Community Association
Callala Bay RFS and Shoalhaven City Council

**Bicentennial Park
Lackersteen Street, Callala Bay
8:00am to 10:30am**

*Callala Bay Rural Fire Service will provide
Bacon and Egg Rolls, Sausage Sandwiches and bottled water,
A generous cash donation appreciated. Juice poppers for sale.*

Magic Daniel will provide fun for the kids, great music by Kenny and Amanda with coffee available from Bumpy Road Catering. The Australia Day raffle tickets for sale, cash only and drawn on the day.

BYO: Hats, sunscreen and chairs/rug etc

A Covid-19 compliant event



- Lawn Mowing • Irrigation • Fertilising • Aerating
- Tree Work • Landscaping • Hedging • Mulching
- Rubbish Removal • Domestic & Holiday Rental Cleaning
- High Pressure Water Cleaning • Garden & Yard Make Overs



• Commercial • Domestic • Rural Properties



0415 732 801

ABN: 16 821 580 073

andrew@atbcontractors.com.au | www.atbcontractors.com.au



Enrolment for children 2 to 5 yrs

Open 8am – 4.30pm

University & TAFE trained teachers

‘School Readiness’ curriculum

Fee rebates available to eligible families

Awarded ‘Exceeding National Quality Standards’ by the NSW Department of Education and Communities.

For further information please call us on **4446 6089**



**first
national**
REAL ESTATE

Callala

4446 4313



Callala First National has been servicing the local area for more than 19 years and continues to strive to provide a service above and beyond our clients expectations. If you are considering selling or renting your property contact our friendly team on 4446 4313 or drop into our office at 58 Boorawine Terrace, Callala Bay.
www.callalafirstnational.com.au

CALLALA BAY NEWS

A monthly newsletter of the
Callala Bay Community Association Inc:

ABN 68031980561



www.callalabaycommunityassociation.com

Email: admin@callalabaycommunityassociation.com

PO Box 14 Callala Bay 2540

President

Sue Chapman

Vice President

Geoff Carne

SECRETARY

John Byron

Treasurer

Mark Bennie

COMMITTEE MEMBERS

Fran Sheil

Christine Byron

Jacinta Flattery – O'Brien

John Fowler

Julia Lockerbie

James Morris

NEWS EDITOR

Jake Khourey -

editor@callalabaycommunityassociation.com

INDEX

Callala Medical Centre Report.....	Page 5
Bushcare.....	Pages 5/7
Community Church.....	Pages 7/9
Garden Club.....	Pages 9/11
Men's Shed.....	Page 13/
Community Garden.....	Page 17
Local Bus Timetable.....	Page 20
Community Story Corner.....	Page 23
Golf Report.....	Page 25
Community Contacts.....	Page 30

Note from the Editor:

The CBnews proudly supports our community, consider subscribing for a small yearly fee.

Please contact me with any local issues or concerns with the intention of having it published.

Editor - Jake Khourey

Scott Horsburgh

Ph: 4446 6544

18/55 Emmett Street
Callala Bay 2540

**Your Local Butcher
The Meat Specialist**



MR MIKE SPARKLE BRIGHT

ABN: 50 534 685 256

Professional Window Cleaner



All Types of windows cleaned
including Fly Screens, Window &
Door Frames Tracks and Runners

We can offer our customers Solar
Panel Cleaning (single story only)

Very Reliable • Free quotes

Ring Mike on:

0406 467 026 or 02 4446 6684

USE,
LEARN &
SHARE
SKILLS



Callala Bay
Open 7 Days A Week
Market-Fresh Fruit and Vegetables
Lotto Newspaper ATM

Ph: 4446 4811

It Pays to Shop Independent

Located in Bayview Plaza, 55 Emmett Street, Callala Bay

How the locals like it™

Bushcare

Suddenly it's THAT time of year again, and gardens are being given attention before the arrival of family/friends for Christmas festivities.

Recently a friend showed me some photos of a small shrub in a relative's garden where some clean up gardening was happening. I looked at the photos and gasped 'that's a terrible weed!' The botanical name is *Ocna surculata*, although you may know it by the common name Mickey Mouse plant. It's a shrub imported originally from South Africa where it is grown as a decorative garden plant. The flowers are actually yellow, but the common name derives from the round black berries and surrounding red covering petal like structures, that appear in late spring and summer and look rather like the Disney character.

Despite the fact that the shrub rarely grows more than 2 metres high in our area, its tap root goes down a long way, and unless all the root is removed, the shrub will re shoot. Hence cutting it off at ground level has no lasting effect, it will sprout multiple stems and re grow. *Ocna* can out-compete native shrubs of similar size and as its foliage and flowers/seeds aren't palatable to native animals, its presence reduces grazing material in natural areas. But birds? They love the seed heads, which they ingest and then the seed is dispersed far and wide when their waste is voided.

Below see the rather innocuous looking *Ocna* that I removed after seeing my friend's photos. The second part of the botanical name refers to the serrated edges of the leaves. The other photo shows the seed structure.



If you have this shrub in your garden, perhaps consider replacing it with a native such as Christmas Bush/*Ceratopetalum gummiferum*. To kill the unwanted Mickey Mouse plant, the main stem/or sometimes stems needs to be cut close to the ground, say 6-7cm or about 3 inches. I should add, before you do this, use gardening gloves, long sleeve shirt/trousers and protective glasses. Then with a pair of secateurs, make a scrape about 1cm/half an inch wide from where you've cut the stem, to ground level.

Continues on Page 7

Callala Bay Progress Hall and Tennis Court

Available for both casual and regular hire

Newly renovated, reasonable rates

Ph: 444 64 313

Regular Community Users

Craft Group: Tuesday (10am)

Folk Dance: Tuesday (2pm)

Subud: Monday and Thursday (7:30pm)

Latin and Ballroom Dancing: Tuesday and Friday (7pm) Alain 04331 561343

Tai Chi: Saturday (8:30am)

Yoga: Thursday (9:30am starting 2022)

Tennis Lessons: Saturday (midday)

Yvonne ph 444 66 280

Maureen ph 444 66 550

John ph 0428 564 738

Anna ph 0405 102 234

Gary ph 0412 068 116

<https://callalabayprogresshall.weebly.com/>



CLAIMING THE DATE

Join us at the Callala Bay Progress Hall
to celebrate!

Saturday, 5th March

GRAND REOPENING
Community Celebration

Bushcare

Then a herbicide such as glyphosate needs to be carefully applied to both where the stem is cut and down the 'scrape'. Whenever you use a herbicide, the weather is significant, you want about 6 hours of sunshine for the poison to be absorbed by the targeted plant. If you want to get rid of the plant but feel unsure about applying the herbicide, you can always contact me, phone number below, and I can despatch the weed for you.

Our team have finished our weekly sessions for the year, but if your New Year's Resolution involves contributing more to the local community, doing more exercise, or just spending time with others devoted to a group task, please feel free to make contact with our group as per the details below.

If you would like to become involved with our Callala Bush Care group, please email our Council Co Ordinator Belinda Stewart, Belinda.Stewart@shoalhaven.nsw.gov.au, and she will put you in contact with us. Any queries about information or opinions in this column, my [Diana] phone number is 0419 531 902.

Callala Bay Progress Hall

Save the Date!

Our old hall has had a facelift and we would like you to come and experience what we have to offer. We are planning an 'open day' at the hall. Save the date! It will be:

Saturday 5 March 2022

We are hoping to have a number of community groups represented on the day so it will be a terrific opportunity to come along and connect to people in our area.

Subud.

Subud is one of our regular hirers. The group is organised by Callala locals. Subud is an international association of people from all faiths and even of no faith who follow a spiritual practice aimed at self-improvement and self-realisation as a member of humanity. If you would like to know more, then please contact Mardiah on 0422 917 338 or Dahlan on 0403 578 498.

Ballroom and Latin Dancing

We are happy to announce that a new Ballroom and Latin Dance group is forming. They are hoping to run two sessions a week. Tuesday evening will start with a one hour lesson followed by one hour of practice. Then, on Friday night, there will be an hour lesson followed by social dancing. The Friday session is designed to be a bit more social. Beginners are welcome. What a great opportunity for our community to get our dancing shoes on!

Next Meeting: Our next meeting will be 19th January, 6pm at the hall. All welcome.



*The Callala Bay News Publication
is proudly funded by the Callala Bay
Community Association with the help of
our local business sponsors*

On Your Side.

I am your representative in the Australian Parliament. I can help with issues like Medicare, Centrelink, aged care and pensions, the NDIS, Veterans' Affairs and community grants.

I can also arrange special birthday and anniversary messages, and information for pensioners and seniors. You can contact me on 4423 1782.

Fiona Phillips



FIONA PHILLIPS MP

FEDERAL MEMBER FOR GILMORE

☎ (02) 4423 1782

📍 3/59 Junction Street Nowra NSW 2541

📍 1/6-8 Orient Street Batemans Bay NSW 2536

✉ Fiona.Phillips.MP@aph.gov.au

📘 Fiona Phillips MP 📱 @fiboydphillips

🌐 FIONAPHILLIPS.COM.AU

Shoalhaven
City Council

OUR COUNCILLORS

Shoalhaven City Councillors welcome comments and information from the general public. They can be contacted on the numbers and email addresses below. For general enquiries phone 4429 3111 shoalhaven.nsw.gov.au

MAYOR
Clr Amanda Findley
M: 0434 151 730

amanda.findley@shoalhaven.nsw.gov.au



WARD ONE

WARD TWO

WARD THREE

Clr Annette Alldrick
M: 0428 657 026
annette.alldrick@shoalhaven.nsw.gov.au



Clr Joanna Gash
M: 0427 160 170
jo.gash@shoalhaven.nsw.gov.au



Clr Kaye Gartner
M: 0428 861 092
kaye.gartner@shoalhaven.nsw.gov.au



Clr Nina Cheyne
M: 0428 629 147
nina.cheyne@shoalhaven.nsw.gov.au



Clr John Levett
M: 0418 469 094
john.levett@shoalhaven.nsw.gov.au



Clr Mark Kitchener
- Deputy Mayor
M: 0478 882 649
mark.kitchener@shoalhaven.nsw.gov.au



Clr Andrew Guile
M: 0412 287 706
andrew.guile@shoalhaven.nsw.gov.au



Clr Mitchell Pakes
M: 0432 557 516
mitchell.pakes@shoalhaven.nsw.gov.au



Clr Bob Proudfoot
M: 0428 970 086
bob.proudfoot@shoalhaven.nsw.gov.au



Clr John Wells
M: 0412 676 159
john.wells@shoalhaven.nsw.gov.au



Clr Greg Watson
M: 0412 210 979
watson.g@shoalhaven.nsw.gov.au



Clr Patricia White
- Assistant Deputy Mayor
M: 0447 416 329
patricia.white@shoalhaven.nsw.gov.au



YOUR AD HERE

Advertise Your Business With The **CBnews** Today!

Very Affordable Rates For All Businesses!

Contact the Editor for more info

editor@callalabaycommunityassociation.com

Garden Club

We celebrated the end of garden club meetings for 2021 with a luncheon at the Butter Factory. It was really nice to be with members and enjoy each others' company after another disruptive year due to Covid. We all wish that the new year will be one where we won't have to worry about lockdowns or cancelation of meetings. No matter what happens, we have our garden, and our outlook is beautifully summed up by this quote from Mayfield Gardens and written by V.S-West-

"The most noteworthy thing about gardeners is that they are always optimistic, always enterprising, and never satisfied. They always look forward to doing something better than they have done before."

I came across this article from an old newsletter titled When should I prune my??

Wisteria- in summer after the spring flowering; particularly the long tendrils and unwanted side growth. If you do it in winter you won't have flowers in spring.

Hydrangeas- cut spent flowers in summer as they occur. In winter give a good cutting back on stems that bore flowers as far as 10cms from base to a couple of buds.

Fuchsias- they flower on new wood so they need to be pruned annually in spring. Cut back 1/3 and as new growth starts, nip back to a few cms so that branching will occur.

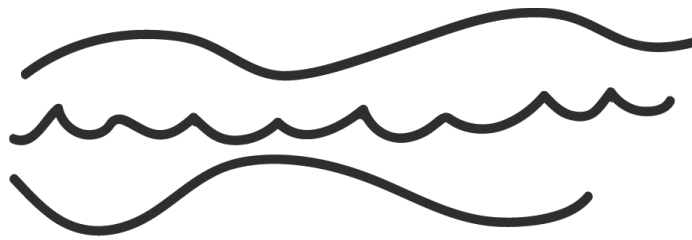
Camellias- not necessary to do it annually. Generally prune after flowering to maintain size and shape desired. Will tolerate cutting back by ½ if necessary.

Passionfruit vine- can go for years without attention but best to prune a little each year. Trim tendrils which can become tangled. Best time to prune it is Spring.

Thought for the month- Knowledge is knowing that a tomato is a fruit. Wisdom is not putting it in a fruit salad.

First meeting for 2022 is Saturday February 19th. Membership fee is \$20 annually. We meet on the 3rd Saturday from Feb. – November 1.30pm at Culburra Anglican Church, Penguin Head Rd, Culburra Beach. Take care and stay safe. Enjoy your garden. Cheers
Doris Carpenter (secretary) 44465631





CURRARONG ART TRAIL

FIRST SATURDAY OF EACH MONTH
10AM - 2PM

MEET THE ARTISTS IN THEIR STUDIO AND EXPLORE
WONDERFUL ART PRODUCED IN CURRARONG

BRING YOUR FAMILY AND FRIENDS IT'S FREE



FOR MORE INFORMATION CONTACT
CURRARONGARTTRAIL@GMAIL.COM



CHECK OUR WEBSITE
WWW.CURRARONGARTTRAIL.COM.AU
FOR ART TRAIL MAP, ARTIST
LOCATIONS AND DETAILS

SPONSORS

Shoalhaven
SOUTH COAST - NSW



CURRARONG ARTS & CRAFTS

ClarendonHomes



Claire Graham



Currarong Art Trail

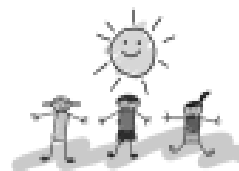
The Currarong Art Trail is an exciting new initiative for Currarong. Situated on the Beecroft Headland, north of Jervis Bay, Currarong is a small fishing village surrounded by ocean and bush land. This natural setting has become the inspiration for over 20 artists who live in the village.

After many months of planning the Currarong Art Trail will be starting on Saturday 6th November 2021 and will continue to operate on the first Saturday of every month following this between 10:00am – 2:00pm.

The Art Trail is free for all visitors. Artists will welcome visitors into their studios to view and purchase original works of art. Our artists' works include photography, political cartoons, botanical printing, woodwork, painting, pottery, glasswork, screen printing and much more!

It is easy to participate, just visit: <https://www.currarongarttrail.com.au/> where you will find information about each artist and an Art Trail Map showing studio locations. Simply choose which artist you would like to visit, plan your walking route around the village and visit the artists in their studios between the open hours of 10:00am and 2:00pm on the first Saturday of each month.

We hope to see you there. Please follow us on Facebook and Instagram and help get this local event off the ground.



Callala OOSH By Katie

Callala Before and Afternoon Care for school-aged children by qualified and caring staff.

For information please call Katie-

0419917793 or 0427976669

email: callalaooshbykatie@gmail.com

Crookhaven Mechanical Repairs



4447 5845



FREE Pick - Up Callala - Bay - Beach - Myola
We Can Service Your NEW Car AND Protect YOUR Warranty
Major Trip Prep - Suspension Upgrades - Bullbars - Accessories



ARC-AU21881



crookhavenmechanical.com.au

MVRLic35947

When Quality Counts

Advertisement

Shelley Hancock MP

Member for South Coast



**“If I can assist with any State Government Matter
please contact my office”**

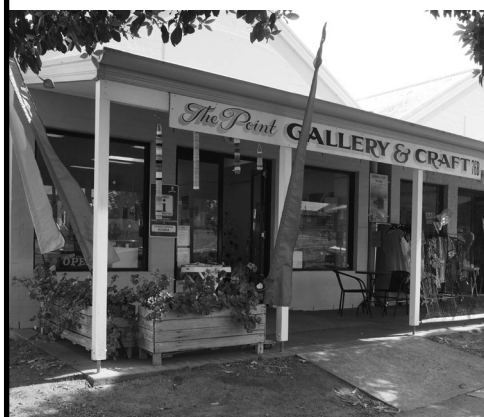
Email: southcoast@parliament.nsw.gov.au

Phone: (02) 4421 0222

1/57 Plunkett Street, Nowra, NSW 2541



Authorised by Shelley Hancock MP, 1/57 Plunkett Street, Nowra, NSW, 2541 Funded using Parliamentary entitlements



The Point Gallery Craft

76B Greenwell Point Road Greenwell Point NSW 2540

Extensive Art and Craft Made in the Shoalhaven
Exhibition space available on a calendar month basis
Tourism Ambassador for the Shoalhaven
Normal opening hours 10am-4pm Friday – Monday
COVID Hours 11-3 Friday, Saturday & Sunday
For further information

Contact: 0400998610 or 0418249148

Culburra Beach & Districts Men's Shed

2021- the year in review

Last year was a challenge for everyone but our Shed managed to weather the storm well and end the year in better shape than we anticipated. Here are some of the highlights.

Callala Markets

These markets continue to be our primary source of exposure and income. We enjoyed good results every month (except September and October with COVID shut-down) and look forward to continuing contact with our customers and supporters in 2022.

Our thanks go to Sandra Irwin for her tireless work organising the markets. And, of course, all profits from stall fees are donated back to local community organisations and good causes.

Open Days

We held our inaugural Open Day last Easter, with a follow up day last month. Both events were successful and we were able to show many potential members and our supporters some of our work, along with guided tours of the workshop. We plan to continue these days during 2022, probably in April and October.

Acquisitions

We added three new major pieces of equipment to our workshop inventory last year. Through funds raised, donations and various grants we acquired a heavy duty (3 phase) Band Saw, a dual grade Drum Sander, and a sophisticated Mill Drill, capable of detailed precision work with both metal and timber. This equipment adds to our existing array of machinery and will allow members to increase their skills and broaden the range of craft items we produce.

Projects

Our project to supply Shoalhaven City Council with nest boxes for installation in local parks and gardens, per our Bushfire Recovery Grant (BRG), was very satisfying, and the finished products were delivered last month.




Shoalhaven Council nest boxes for delivery

Council officers were very happy with the final products, and its variety, and we look forward to their installation over coming months. The boxes will be individually identified/labelled, their locations recorded and then monitored periodically for occupancy, etc. We have requested feedback from Council in due course, in order to continuously improve our nest box range.

We were fortunate to receive positive media exposure on social media and from local press and radio. There has been an associated upturn in public interest regarding habitat loss and the use of nest boxes, with increased inquiries and sales of various boxes.

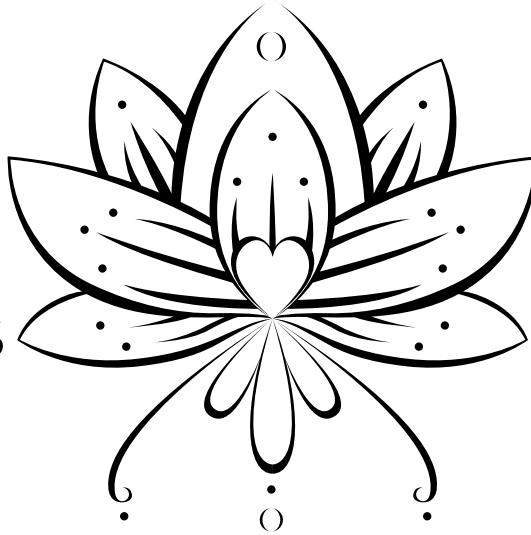
We'll be at the Callala Markets on 8 January with a range of products for purchase. Come along and see what the Shed can offer you. New members are always welcome.

The Shed is open on Monday and Wednesday mornings, from 9am to 1pm. For more information, or to enquire regarding membership, please call 0499 452095 or visit our  Facebook page.

Callala Yoga & Pilates

**CLASSES
ON NOW**

**ALL
AGES/ABILITIES
WELCOME**



**FIND
TIMETABLE
ON OUR
FACEBOOK
PAGE**

FACEBOOK.COM/CALLALAYOGA

PH: 0422433159 INSTA: @CALLALAYOGA



Pottenger & McGhee Solicitors

Nowra

Conveyancing | Wills & Estates | Business Law | Leases

We look forward to meeting you and helping
you with your legal needs.

Level 1, 25 Kinghorne Street, Nowra Phone 02 4421 6166

Email: pbetts@potmac.com.au

If you can't come to us, we can come to you!

Callala Progress Hall Committee

New paint, new times ahead! An update from Callala Bay Progress Hall

It's exciting times for the 'old hall', as it is affectionately known among locals! You have read about the history of the hall; of how our community worked so hard in the 1960s and 1970s to build the hall. We are thrilled to announce that, after a major renovation, the hall is back in use and is, once again, available for hire! As our community grows, it's great to have a choice of venues.

The AGM was held on the 24th November, 2021. It was well attended and ended with a very convivial cheese and wine event. Kerry Wake and Sharon Neridal were both present from Council with Kerry acting as Returning Officer. User groups and local residents were also among those in attendance.

A warm vote of thanks for David Wadsworth was moved unanimously. It was in recognition for the tireless work he did in liaising with Council and advocating for the hall. Grateful thanks also go to Collette Early who stood down after several years as secretary for the committee.

A date was set for a community event to celebrate the renovations. This will be 5 March 2022. Details next newsletter.

All correspondence can be directed to:
cbphcommittee@gmail.com
Booking enquiries via Facebook, email or phone
444 64 313

Incoming committee:
Chairperson - David Wadsworth
Vice Chair - Sue Borrowdale
Secretary - Jenny Cork
Treasurer - Joanne Muller

Booking Officer - Deidre Moxon

CBCA events coming your way

Residents and visitors to beautiful Callala Bay please make a note in your calendars:

1 Sausage sizzles at the shops- Saturday 8 and Saturday 15 January from 9am to 1pm- to raise funds for the CBCA to continue providing assets and events for the community and to sell raffle tickets for our Australia Day draw.

2 Breakfast by the Bay (and more) on Wednesday 26 January 2022, Australia Day from 8-11am at Bicentennial Park. Our raffle will be drawn during the festivities.

The Callala Bay Community Association is back following the COVID hibernation period! We look forward to seeing you in person.



*The Callala Bay News Publication
is proudly funded by the Callala Bay
Community Association with the help of
our local business sponsors*

Callala Community Church

... A Jesus centred Church ...

Looking for something different?

*Perhaps somewhere you can ask
those difficult questions!*

The Community church will be meeting in homes
beginning in October.

Please give us a call and see if there is a group that you might
like to connect with.

As part of your community let us know if we can help in any
way.

Phone Pastor Kevin— 0437338739 or follow us on fb

FREE

Pre-Loved Clothing & Book Stall

**First Saturday of the Month
at the**

Callala Community Centre

9.30am to 12.00 NOON

Clothes in good condition can be dropped off at the stall
(on the day only). If clothing can be delivered by 10am;
this will allow them to be displayed.



*Where the
Beach & Bay
come to play!*

GOLF COURSE

Information & bookings
callalagolf@outlook.com
Open Every day (02) 4446 5313 opt 2
(Check for closures during wet weather)

FRIDAY

Fitness Exercise
Class from 10:30am



TUESDAY

\$20 or \$25 T-BONE Night.
\$12 Lunches Monday to Friday.

WEDNESDAY

\$17 Chicken Schnitty Night.

RAFFLES

THURSDAY

Bowlers Extensive Raffle from 6pm
with great prizes.
Members Badge Draw!

FRIDAY

Meat Mart Best value Friday night in
town - Meat Tray prizes valued @
over \$1,000 – Tickets on sale 6pm
Draw commences approx 7pm

SATURDAY

LIVE MUSIC EVERY WEEK!

Fisho's Raffle from 12 noon to 1:30pm

SUNDAY

Meat & Seafood Raffle - Tickets 4pm - Drawn 5pm
Members Badge Draw!
Fisho's Weigh In – 2pm 4th Sunday each month.



Members Badge Draw EVERY THURSDAY & SUNDAY

+ BONUS DRAW LAST SATURDAY EACH MONTH

MONDAY - Close @ 7pm TUESDAY

MEMBERS Happy Hour 4 - 6pm.
Free Trivia – 6:30pm Start.

WEDNESDAY

NPL Poker – \$12 Entry -
Includes 2 Lifelines - 7pm start.
All games are sit & go – 10 per sit & go.

THURSDAY

Bingo – Eyes down at 11am
LAST SATURDAY EACH MONTH
Mega Meat Raffle + 2nd Chance Draw =
5 x \$100 in points to be won!

BOWLS

Monday- Indoor 12 noon

Tuesday – Women's Bowls from 9:30am

Wednesday – Men's/Mixed Social Bowls.
Names in by 12pm for 12:30pm start.

Every day – Barefoot Bowls
\$10 per person – Everything supplied.
Kids 12 & under play for free.

DINNER FROM 5PM TUES – SUN
(7 DAYS DURING SCHOOL HOLIDAYS)

Beach & Bay BISTRO

LUNCH 12 NOON – 2:30PM
(7 DAYS)

Phone: 02 4446 5313

43 Callala Beach Road, Callala Beach

Courtesy Bus available 7 days – call Club to book.

www.clubcallala.com.au





*The Callala Bay News Publication
is proudly funded by the Callala Bay
Community Association with the help of
our local business sponsors*

Want to help support this
publication?

Become a member of the Callala
Bay Community Association to
do just that.

Email: admin@
callalabaycommunityassociation.
com

Peter Rose EyeQ Optometrists

Visit eyeq.com.au for convenient online bookings

59 Kinghorne Street, Nowra
4421 4511



Peter Rose



Robert Rose

EyeQ
OPTOMETRISTS
your local
experts in eyecare



ABN: 40 132 674 769

LEAVES AWAY PTY LTD trading as

SHOALHAVEN GUTTER CLEANING

COMMERICAL & RESIDENTIAL

FULLY TRAINED

FULLY INSURED

0490 083 275

reliability, quality, value

shoalhavenguttercleaning@gmail.com





WELCOME to the Callala Community Centre, conveniently located opposite the shops in Emmett St, Callala Bay.

We are one part of the Shoalhaven Community Information Network (SCIN). Our technology has been upgraded to include solar panels, a storage battery, and satellite communications to provide an independent, continuous, communication solution with the Nowra Emergency Centre.

The information can be seen on the screens located at the Centre.

An audio-visual system has been installed in the Centre offering flexible and comprehensive facilities, including;

- **blue tooth; computer connectivity; the ability to operate DVDs and CDs and play personal audio-visual files from a USB drive or SD memory card.**

If you want to have a wedding; memorial service; business conference; group gathering or family reunions the Callala Community Centre is well worth considering.

Our facilities include

- **A well-equipped kitchen; air conditioning; raised stage and off-street parking, and**
- **Crockery, cutlery and glasses and seating for up to 120 people**

For all hiring enquiries contact Jane on 0408 521 520 (E:janenellie@me.com). Follow us on Facebook at Callala Community Centre.

Route 120

Currarong, Callala Bay, Callala Beach, Myola to Nowra and Bomaderry

Departs	School Days	Monday to Friday			School Holidays		
	AM	AM	AM	PM	AM	AM	PM
Currarong							
Crookhaven Pde	7.15 T	8.25 T			8.00		
Yalwal St	7.16 T	8.26 T	Not Available	Not Available	8.01	Not Available	Not Available
Tennis Court	7.17 T	8.27 T			8.02		
Progress Hall	7.18 T	8.28 T			8.03		
Cambe & Nowra Rds	7.20 T	8.30 T			8.05		
Callala Bay							
Sydney Ave	7.35 T	8.47	10.10	1.45	8.20	10.10	1.45
Boorawine Terrace	7.30 T	8.40	10.13	1.48	8.23	10.13	1.48
Emmett Street Shops	7.30 T	8.46	10.16	1.53	8.26	10.16	1.53
Callala Public School	7.35 T	8.45	10.17	1.54	8.27	10.17	1.54
Callala Beach / Myola							
Queen Mary Street	7.15 T	8.15	10.20	1.58	8.31	10.20	1.58
Catherine St Myola	7.20 T	8.20	N/A	N/A	8.36	N/A	N/A
Sir Henry Crescent	7.22 T	8.23	10.23	2.02	8.40	10.23	2.02
Callala Beach Shops	7.25 T	8.25	10.25	2.04	8.42	10.25	2.04
Watts and Lennox St	7.27 T	8.28	10.28	2.07	8.45	10.28	2.07
Mayfield	7.40 T						
Stewart Place Nowra	8.20	9.20	11.00 #	2.55	9.20	11.00 #	2.55
Bomaderry Rail	8.15	9.30	11.10 #	2.40	9.30	11.10 #	2.40
Nowra Tafe	8.20	9.32					
Stocklands Nowra		9.40	#	2.50	9.40	#	2.50
Train Departs Weekdays	8.17 & 9.20	10.00*	11.23 & 12.00pm*	16.12	9.20 & 10.00*	11.23 & 12.00pm*	16.12
Train Departs Saturdays					10.31	12.29	16.33

* Bus Service 737 Bomaderry Station to Kiama Station
T Transfer at Shoalhaven High School for Nowra and Bomaderry

Drops only as Required.

SERVICES DO NOT OPERATE SUNDAYS AND PUBLIC HOLIDAYS
T Transfer at Callala School for Nowra and Bomaderry

Route 120

Nowra and Bomaderry to Callala Beach, Myola, Callala Bay and Currarong

Departs	Monday to Friday	Monday to Friday	School Days	School Holidays
	AM	PM	AM	PM
Train Arrives Weekdays	8.40* & 9.15	11.40* am & 12.27		8.40* & 9.15
Train Arrives Saturdays		1.40* & 2.17		11.40* am & 12.27
				1.40* & 2.17
Departs				
Stewart Place Nowra	9.20	12.20	2.55	9.20
Bomaderry Rail	9.30	12.32	2.40	9.30
Nowra Tafe	9.32	12.34		9.32
Stocklands Nowra	9.40	12.40	2.50	9.40
Mayfield			3.55	
Callala Bay			5.473	
Callala School	10.17	3.35	4.11	10.17
Sydney Ave	10.10	3.43	4.05	10.10
Boorawine Terrace	10.13	3.40	4.08	10.13
Emmett Street Shops	10.16	3.35	4.10	10.16
Callala Beach			5.473	
Queen Mary Street	10.20	3.46 T	4.22	10.20
Catherine Street Myola	N/A	3.51 T	4.27	N/A
Sir Henry Crescent	10.23	3.55 T	4.30	10.23
Callala Beach Shops	10.25	3.45 T	4.21	10.25
Watts, Lennox Road Loop	10.28	3.42 T	4.18	10.28
Currarong				
Cambe & Nowra Rds	Not Available	3.50 T	4.20 T	Not Available
Progress Hall		3.53 T	4.23 T	
Tennis Court		3.55 T	4.24 T	
Yalwal St		3.57 T	4.25 T	
Crookhaven Pde		4.00 T	4.26 T	

* Bus Service 737 Kiama Station to Bomaderry Station.
T Transfer at Callala Bay for Callala Beach, Myola and Currarong.

Drops as Required.
T Transfer at Callala Bay for Currarong.

SERVICES DO NOT OPERATE SUNDAYS AND PUBLIC HOLIDAYS.
5473 Bus for Callala Bay, Callala Beach, Myola and Currarong.

YOUR AD HERE

Advertise Your Business With
The **CBnews** Today!

Contact the Editor for more info

editor@callalabaycommunityassociation.com



Callala Gallery

15 Callala Beach Road, Callala Beach

Artworks by **Local Artist Roslyn Chatham** in Oil, Acrylic, Watercolour, Pastel, Mosaic, Mixed Media, Resin Work.

Landscapes, Seascapes, Local Scenes, Fantasy Art, Portraits, Commissions.

Open by Appointment Only

Phone: 44465770. Mobile : 0407465770

Email : Roslyn.chatham@bigpond.com

Callala Gallery on Facebook

WHAT'S ON @ THE PROGRESS HALL

MONDAY	4:00PM - 6:45PM	JENNY'S DANCE	PAMELA	0433 675 820
TUESDAY	10:00AM – 12:00PM	CRAFT	YVONNE FOWLER	4446 6380
TUESDAY	2.30PM – 4.30PM	FOLK DANCING	MAUREEN PETHERICK	4446 6550
THURSDAY	9:30AM	YOGA	ANNA SMALLWOOD	0405 102 234
		BEGINNERS WELCOME – MATS SUPPLIED WWW.ROAMINGYOGIS.COM.AU		
FRIDAY	3.30PM – 5PM	TENNIS LESSONS	GARRY O'CONNOR	4464 1418 OR 0412 068 116
SATURDAY	8.00AM	TAI CHI	JOHN GRAHAM	0428 564 738
		ALL LEVELS		

Tennis court bookings can be made at Callala & Culburra First National – 58 Boorawine Terrace, Callala Bay or call on 4446 4313. Please make your booking during office hours so that the keys can be made available (available in daylight hours only).

THE HALL IS ALSO AVAILABLE FOR FUNCTION BOOKINGS INCLUDING WEDDINGS, BIRTHDAYS, BABY

ANGLICAN CHURCHES

of Culburra Beach | Callala | Currarong

Callala Church Service - 5pm Sunday
All Welcome | 4:30pm Afternoon Tea | Kids Church
 St Marks, 2 Hunter Street, CALLALA BAY

Caterpillar's Playgroup - 9:30am Friday @ Culburra Beach Anglican

Kids Club - Friday Afternoon @ Callala Bay Anglican

289 Youth Group - Friday Evening @ Callala Bay Anglican

For more information: Rev. Paul McPhail
 m: 0414 616 860 e: culburra.anglican@gmail.com
www.culburraanglican.org.au

Helping Hand Electrical

Offering Disabled and Aged pensioners

Special rates, No job to small



Phone- 0455 256 792

Elect Lic- 26266C

Electromagnetic Health & Safety



Are you concerned about your exposure to mobile phones, Wi-Fi or electrical infrastructure?

For more information or to arrange a quote
contact **1300-123-347** or email **e.h.s@tutamail.com**
electromagnetichealthandsafety.com.au

Services include
EMF Testing : Data Cabling : Testing & Tagging

ARMSTRONG
CONTRACTING PTY LTD

SINCE 1985

CONTACT
Robert Daniels
0414 011 089

Ph.4446 6632

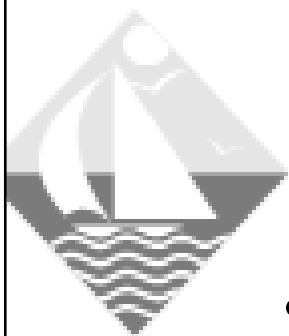
Specialising in **WATERPROOFING**

- BATHROOMS
- BALCONIES
- PLANTER BOXES
- ROOFING

JOINT SEALING

- FIRE RATED
- PANEL JOINTS
- SAW CUTS
- FLOOR JOINTS

WATERPROOFING LIC.NO. 163162C
MASTER BUILDERS ASSOCIATION
MEMBERSHIP NO. 18491909



Callala Bay Pharmacy

2/55 Emmett Street, Callala Bay 2540 Ph: 4446 4251

Hours: Mon-Fri 9am-5.30pm; Sat 9am -12.30pm

Friendly, professional service

- Diabetes Australia supplies • Baby weighing • Gift lines
- Blood pressure monitoring • Medication packing

FREE delivery every Thursday to Callala Bay, Callala Beach and Currarong

Dr John C Wright B.V.Sc.

CULBURRA VETERINARY CLINIC

7 Weston Street, Culburra Beach

9am-11am weekdays

4-6pm Mon, Tue, Thurs

4-5pm Wed, Fri

10am-12pm Sat

CALLALA VETERINARY Consulting Room

22 Emmett Street Callala Bay

1-3pm weekdays by appointment

Please phone: 4447 3851 for appointments, enquiries or after hour calls



E & S Painting Services

- Interior & Exterior Painting
- Friendly Local Service
- Excellent Rates
- Quality Assured

M: 0422 560 696 H: 4446 5056

Graham Worts

CULBURRA & DISTRICT COMMUNITY HEALTH SERVICE

We maintain the Op Shop, Ambulance
Station, Medical Centre and the Medical Bus.

Culburra Pharmacy on **4447 2382** for
medical bus
(travel is by donation)

Volunteer's Bus drivers phone neil on
4447 4713

Volunteer's op shop workers phone
Jeanette **4447 5075**

YOUR AD HERE

Advertise Your Business With
The **CBnews** Today!

Contact the Editor for more info

editor@callalabaycommunityassociation.com



Having problems with
your computer?

Hayton.Biz IT

Local computer
support & service.

Onsite IT & computer support for business and home
users.

Experienced technicians, same day service, No call out
charge for the local area* & competitive rates.
Laptop repairs/servicing also undertaken.

- Computer repairs
- General PC report
- Computer servicing
- General PC advice
- Internet problems
- Email setup
- Virus/malware removal
- Network configuration
- Domain registration
- Server installation
- Server support
- Backup configuration

(02) 4423 3857

**Call
Today**



GP JAMES CLEANING SERVICES *The Royal Treatment*

Fast Reliable & Trustworthy

*Specialist in Holiday home cleaning

* Linen Hire and Laundry Service

*Domestic and Office Cleans

Bond and Rental Cleans

Fully Insured



0402576859 0244465000 gpjamescleaning@gmail.com



Vinnies

CALLALA BAY SHOP

- **High quality second-hand items**
- **Clothing, bric-a-brac, books, linen, beach towels, toys, games, DVDs, jewellery and much more!**

VOLUNTEERS NEEDED

**YOUR TIME IS THE MOST VALUABLE
GIFT YOU CAN GIVE.**

For details of how you can help,
visit www.vinnies.org.au or pop into the shop
for an application pack.

Find us at: **59 Emmett St, Callala Bay**

Opening hours: **Monday to Friday – 8.30am to 4pm,**
Saturdays – 8.30am to 2pm (during summer/peak times only)

**We welcome donations of non-bulky items during opening
hours. For pickups, please call 4421 7244.**

COMMUNITY CONTACTS

Emergency Police Fire Ambulance –
000

Nowra Police Local Area

Command – 4421 9699

Crime Stoppers – 1800 333 000

(anonymous reporting)

Police Assistance line – **131 444**

(non-emergencies)

State Emergency Service – **132 500**

Jervis Bay Marine Park – **4441 7752**

Callala Doctor's Surgery – **4446 5350**

Shoalhaven City Council

General enquiries, business hours –

4429 3111

Emergencies and after hours – **4421**

3100

Justices of the Peace

Duncan, Howard – **4446 6535**

Hannan, Robyn – **4446 4428**

Rev Sue Fisher – **0406 815 449**

Lower, Jill & Graham – **4446 6281**

McMaugh, Dallas – **0400 189 875**

Taylor, Lorraine – **4446 5117**

Culburra & District Garden Club

Culburra Beach & District Garden
Club

We meet every 3rd Saturday of
month

Feb-Nov at 1.30pm.

Venue- Culburra Anglican Church

Penguin Head Rd, Culburra Beach.

For more details -contact Doris

Carpenter- 44465631

**Culburra & Districts Community
Health Service**

Visit the Op Shop and pick up a
bargain! Proceeds help maintain the
Medical Bus that transfers people to
Nowra for medical appointments from
Greenwell Point, Culburra Beach,
Callala Bay & Beach, Currarong
and Myola. Please contact Culburra
Pharmacy on **4447 2382** to arrange
transport.

**Culburra Beach & Districts Men's
Shed**

Every Monday and Wednesday
from 9.00am to 1.00pm, beside the
Banksia Community Hall, Fred Evans
Lane, Culburra Beach (IRT entry).

More details – contact Ray Sutton –
0499 452095

DISCLAIMER

The Publisher, known as Callala Bay Community Association Incorporated, does not accept any responsibility or liability in any way whatsoever with regard to any of the paying advertisers contained in this newsletter. Additionally the views and comments of all reports submitted are the responsibility of the person/organisations submitting same, including those from SCC (Shoalhaven City Council), which are usually copied verbatim from correspondence and are included for your information. The reports do not necessarily reflect the views of the Publisher.

Truck & Forklift Driving School

Desire Bhugon

RMS Approved: LR, MR, HR, HC (Auto
and Manual)

OLDER DRIVER ASSESSOR



Tel: 02 444 66861 Mobile: 0418 654 572 Email: desdschool@bigpond.com

**See the change
your home loan can make.**

Bendigo Connect Home Loan Package.

When you choose a Bendigo Connect Home Loan package, we'll reward you with a big interest rate discount.

And your home loan will add to the \$183 million already given back to help Australian communities thrive.

Drop into your nearest branch at 98 Kinghorne Street, Nowra or phone 4422 7574 to find out more.

Be the change.



bendigobank.com.au/homeloans

*Terms and conditions, fees and charges apply. Full details available from www.bendigobank.com.au/homeloans.
Credit provided by Bendigo and Adelaide Bank Limited ABN 11 068 049 178 AFSL/Australian Credit
Licence 237879. A427923-7 (382346_v1) (5/01/2018)



Happier, healthier pets

South Coast Veterinary Services
is your local, independent and
exclusive veterinary care provider.

Our complete range of in-home
and mobile pet services take the
stress out of trips to the vet
... for happier, healthier pets.



SCVS

South Coast
Veterinary
Services

Book a visit, manage prescriptions and
pay online. Get in touch for more details.

Dr. Glynis Kuipers

0412 319 110

office@southcoastvet.com.au

www.southcoastvet.com.au