

Callala Bay NEWS

October 2024

Issue 132-2024

Monthly Magazine from the Callala Bay Community Association Incorporated



The Callala Bay NEWS *proudly supports your local community
by helping to fund projects that benefit all residents.*

Consider supporting us by subscribing for a small yearly fee.

Contact: editor.cbcanews@gmail.com



- Lawn Mowing • Irrigation • Fertilising • Aerating
- Tree Work • Landscaping • Hedging • Mulching
- Rubbish Removal • Domestic & Holiday Rental Cleaning
- High Pressure Water Cleaning • Garden & Yard Make Overs



• Commercial • Domestic • Rural Properties



0415 732 801

ABN: 16 821 580 073

andrew@atbcontractors.com.au

www.atbcontractors.com.au



Enrolment for children 2 to 5 yrs
Open 8am – 4.30pm
University & TAFE trained teachers
'School Readiness' curriculum
Fee rebates available to eligible families

Awarded 'Exceeding National Quality Standards' by the NSW Department of Education and Communities.

For further information please call us on **4446 6089**



**first
national**
REAL ESTATE

Callala

4446 4313



Callala First National has been servicing the local area for more than 19 years and continues to strive to provide a service above and beyond our clients expectations. If you are considering selling or renting your property contact our friendly team on 4446 4313 or drop into our office at 58 Boorawine Terrace, Callala Bay.
www.callalafirstnational.com.au

CALLALA BAY NEWS

*A monthly newsletter of the
Callala Bay Community Association Inc.*
ABN: 68 031 980 561
www.callalabaycommunityassociation.com
Email: admin@callalabaycommunityassociation.com
PO Box 14 Callala Bay 2540

CBCA Inc COMMITTEE

President

Morris Dickins

Vice President

Scott Horsburgh

Treasurer

Julie Morris

General Secretary

Jacqueline York

Minutes Secretary

Merry Dickins

COMMITTEE MEMBERS

Jacinta Flattery-O'Brien

Gary Chapman OAM

Sue Chapman

Melinda Listing

Kate Hartnett

Robert Hartnett

Sharron Horsburgh

Public Officer/CB News Editor

James Morris

Note from the Editor:

The CBnews proudly supports our community, consider subscribing for a small yearly fee.

Please contact us with any local issues or concerns with the intention of having it published.

INDEX

Culburra Beach & Districts

Men's Shed Page 4-5

From the Committee Page 6

Emergency Contacts Page 12

Callala Community Garden Pages 14-15

Callala Markets Page 20

Culburra Beach & District

Garden Club..... Page 22

From the Doctor Page 30

Bushcare..... Page 33

Community Contacts Page 38

MR MIKE SPARKLE BRIGHT

ABN: 50 534 685 256

Professional Window Cleaner



All Types of windows cleaned
including Fly Screens, Window &
Door Frames Tracks and Runners

We can offer our customers Solar
Panel Cleaning (*single story only*)

Very Reliable • Free quotes

Ring Mike on:

0406 467 026 or 02 4446 6684



Scott Horsburgh

Ph: 4446 6544

18/55 Emmett Street
Callala Bay 2540

**Your Local Butcher
The Meat Specialist**



USE, LEARN & SHARE SKILLS

**CULBURRA BEACH &
DISTRICTS MEN'S SHED**

FIND US BEHIND THE POLICE STATION.



Culburra Beach & Districts Men's Shed

There were no Callala Markets in September due to the local Council elections. Instead, we hosted our first ever "Sausage Sizzle" fundraiser and Information Day at Boss Outdoor in South Nowra on Saturday 7 September. We had quite a few customers for a sausage sandwich and/or soft drink, and



*Fiona Phillips, pictured here with Tyson
from Boss Outdoor*

a few membership enquiries. Our thanks to Boss Outdoor, Callala Bay Family Butcher, IGA Callala Bay and Woolworths in Culburra Beach for their support.

Although the weather was cool early, it didn't rain and we were pleased to be visited by our local Member, Fiona Phillips, a great supporter of our Shed and Men's Sheds more generally.

We continue to take orders for custom jobs from various local and remote customers. A recent example is this 'Street Library' custom made by Keith and destined for a Canberra home.

Our range of nestboxes continues to draw attention from locals and visitors. Featured this month is one of our rainbow lorikeet boxes. This species is becoming increasingly common in our area and can be quite intimidating for other species. Providing them with suitable accommodation takes pressure off other endemic birds.

The Shed is open for door sales on Monday and Wednesday mornings so feel free to call



*Custom made Street Library
(unpainted, as requested by customer)*

in and check out our full range of nestboxes and native bee hotels for your backyard buddies. Now is the perfect time to put up nestboxes as the weather warms up and days grow longer. We also carry a wide range of other timber craft for the home or kitchen.

Follow us on Facebook or join our Facebook group to stay up to date with news and events. You can contact us through Facebook, via email to CBDMS1@outlook.com or by phone on 0494 055329.



Rainbow lorikeet nest box



FirstLine Holistic Therapies

At FirstLine Holistic Therapies we specialise in alternative healthcare, using safe and effective natural medicines. We also offer a personalised Lifestyle Medicine Program for heart disease, diabetes, and cancer.

Gastro-Intestinal Health • CardioMetabolic disease
Men & Women's Reproductive Health • Mood disorders
Skin conditions • Fatigue/stress & sleep problems

Serving the Shoalhaven area.

Telehealth appointments also available.

Located at 132 Junction St. Nowra.
(inside Nowra Medical & Skin Centre)

Phone: 0407 489 063

Email: johntylor@multicitymedical.org

CBCA Meeting Report 11 Sep 24

The Meeting was advised of the passing of Ray Plevy, a longtime member of CBCA and the CBCA extends its condolences to his family.

The CBCA Chair provided a summary of the Committee Meeting held 26 Aug 24:

- A basic First aid course is to be held for community members on Sat 28 Sep 24. The course chosen is a basic course and is for community members to help themselves and others. It is not a certificate course. If interested, drop a line to admin@callabaycommunityassociation.com. or go to the post office for a form. At the moment there are about 14 people attending.
- Rob Hartnett has offered to be lead for the Australia Day Breakfast and any people able to assist please talk to Rob.

Treasurer's report:

\$8500 in main account. 2 small invoices.
\$10,000 in term deposit.

Working groups reports:

- Sheaffe St – Liza Butler MLA is having a meeting with Carey McIntyre and would communicate progress to us after that meeting.
- Wowly Creek toilet block - Secretary – Sue has written to council re this (See separate communique in the newsletter)
- Stairs and the end of Chapmans St - Funding through NSW Recovery program. An investigation and design will be concluded by November. The funding is also for Lackersteen steps.

Other business:

Rob reported that a woman entered the post office distressed. She had been contacted by a scammer claiming to be Telstra. Staff were able to help and prevent any scamming. Rob suggested the CBCA could consider holding a meeting for people to learn how to recognize scamming and how to manage it.

Next meeting:

Wednesday 9th October 2024 at 7pm

Nominate someone great - Australia Day Awards are open



Nominations are now open for the 2025 Shoalhaven Australia Day Awards, with a great prize up for grabs for those who make the special effort to nominate someone great.

Everyone in the community is encouraged to nominate someone who has gone above and beyond this year.

The Shoalhaven has many inspirational role models who make a positive impact on people's lives and this is a chance to honour those special people who deserve to be recognised and celebrated.

The three categories for nominations are:

- Citizen Award: 25 years and over
- Young Citizen Award: 24 years and younger
- Proudly Shoalhaven Award: open to individuals, volunteers, service groups and community groups.

Nominators will go into a draw to win a \$500 gift voucher to be used at the Shoalhaven Entertainment Centre.

Nominations can be submitted until 5pm Friday 1 November 2024 via Council's webpage.

The winners will be announced at a special awards ceremony in January 2025

If you boil a funny bone, it becomes laughingstock – that's humorous



Tai Chi & Qigong for Health

Callala Beach Community Centre

Tuesdays 11:30am

To Book contact:

Joanne

0416 271 408

- *Feel the flow of vitality* -



Callala Gallery

15 Callala Beach Road Callala Beach

Open 10am to 3pm

Week Days & Weekends

Weekly classes in H2O Oils, Acrylics, Watercolours, Pyrography, Mixed Media, Mosaics & Clay Sculpting.

Workshops by appointment.

Artworks for sale by local Artists.

We do take Commissions & have a lay-by agreements.

Ph: 4446 5770 Mob: 0407 465 770

www.artclassesnowra.com

Callala Gallery on Facebook

Peter Rose EyeQ Optometrists

Visit eyeq.com.au for convenient online bookings

59 Kinghorne Street, Nowra

4421 4511



Peter Rose



Robert Rose

EyeQ
OPTOMETRISTS
your local experts in eyecare

JERVIS BAY FILM TRANSFERS

Records



Cassettes



Onto
CDs



VHS movies



onto DVDs



8mm Films onto USBs

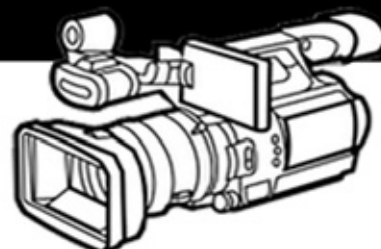
Convert CDs to Mp3s

Scan Slides onto USBs

Call: 0401076338

jervisbayfilmtransfers.com.au

Wedding Videographer



**We Build
Corporate
Websites**

FIONA PHILLIPS MP

Federal Member for Gilmore

I'm here to help with issues like Medicare, Centrelink, aged care and pensions, the NDIS, Veterans' Affairs and community grants. I can also arrange flags, and special birthday and anniversary messages.

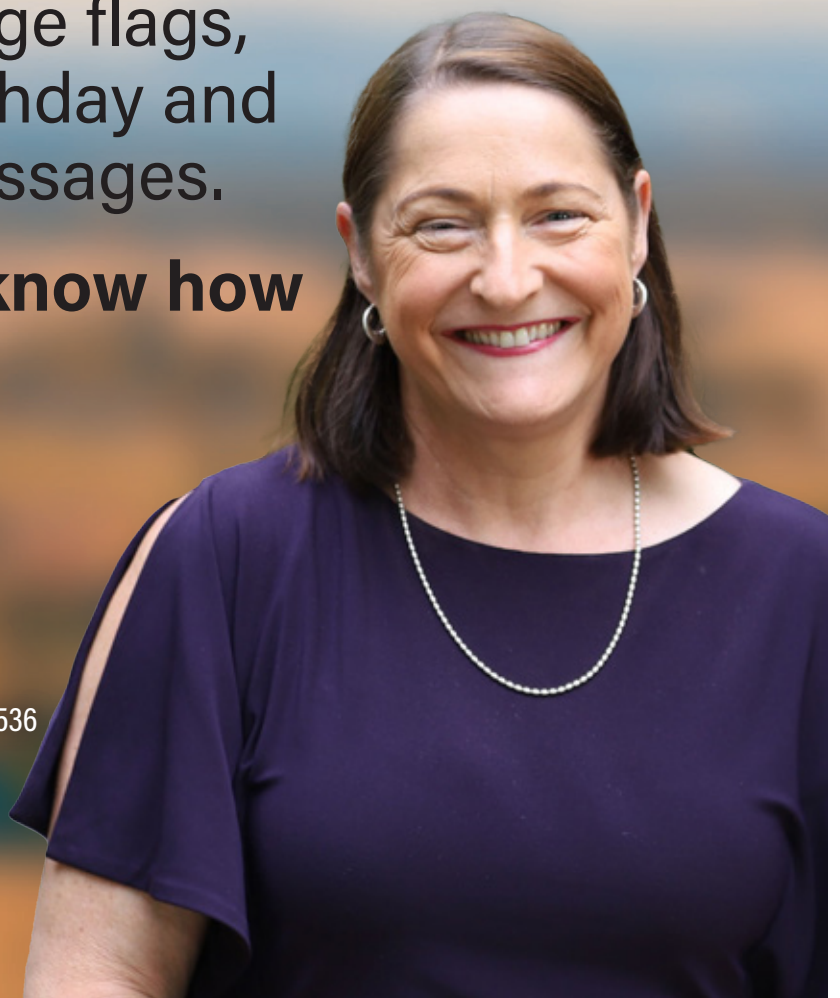
Please let me know how I can help you.

☎ (02) 4423 1782

@ Fiona.Phillips.MP@aph.gov.au

🌐 fionaphillips.com.au

🏠 3/59 Junction St Nowra NSW 2541 &
1/6-8 Orient St, Batemans Bay NSW 2536



Authorised by Fiona Phillips MP, Nowra.



ANGLICAN CHURCHES of Culburra Beach | Callala | Currarong

Callala Church Service - 5pm Sunday
All Welcome | 4:30 pm for afternoon tea
St Marks, 2 Hunter Street, Callala Bay



Please contact us for more
information or visit our web site.

p: 02 4447 3277

e: office@culburraanglican.asn.au

www.culburraanglican.asn.au

Growth Group Bible Studies
Contact us for times and locations

Caterpillar's Playgroup
9:30am Friday @ Culburra Beach Anglican

289youth
Friday Nights @ Culburra Beach Anglican



Having problems with
your computer?

Hayton.Biz IT

Local computer
support & service.

Onsite IT & computer support for business and home users.

Experienced technicians, same day service, No call out charge for the local area* & competitive rates. Laptop repairs/servicing also undertaken.

- Computer repairs
- General PC report
- Computer servicing
- General PC advice
- Internet problems
- Email setup
- Virus/malware removal
- Network configuration
- Domain registration
- Server installation
- Server support
- Backup configuration

0422 599 305

**Call
Today**

Culburra Beach Orient Point Men's Shed Inc.

The Shed by the Lake

Location: Old Scout Hall Cnr West Crest & Wollumboola Lane

NEW MEMBERS WELCOME

You are invited to join the Longest Established Men's Shed in Culburra, learn new skills and bring your own, come and enjoy the company of our friendly members and participate in a variety of activities

We are open 8:30am - 12:30pm Tuesday, Wednesday & Thursday

All enquiries: 0498 023 781

www.culburrabeachmensshed.org.au

Facebook: Culburra Beach Orient point Men's Shed <https://www.facebook.com/cbopmshed>



CLUB HOURS

Mo: 10AM - 7PM
Tu: 10AM - 9PM
We: 10AM - 10:30
Th: 10AM - 10:30
Fr: 10AM - 10:30
Sa: 10AM - 10:30
Su: 10AM - 9PM

43 Callala Beach Road, Callala Beach
02 4446 5313 clubcallala.com.au
generalmanager@clubcallala.com.au



for information & bookings, call us on
02 4446 5313 (option 2) or contact
callalagolf@bigpond.com
open every day pending weather

MONDAY:

Indoor Bowls - from 12PM

TUESDAY:

Veterans Golf - from 7:30 to 1PM

WEDNESDAY:

Callala Mixed Social Bowls - from 12PM

Ladies' Golf - from 8:30 to 1PM

FRIDAY:

Fitness Class - from 10:30AM

SATURDAY:

Mixed Golf Comp - from 7:30 to 1PM

EVERY DAY:

Barefoot Bowls \$15 per person,
includes equipment hire
kids aged 12 & under play for free

THURSDAY:

Bowls Raffle - tickets sold from 6PM

Bowls Schooner Draw - from 7:45PM

FRIDAY:

Mega 50 Meat Tray Raffle -
tickets sold from 6PM, drawn 7PM

SATURDAY:

Fisho's Raffle -
tickets sold from 12PM to 1:30PM

LAST SATURDAY OF MONTH:

Meat Tray Raffle -
tickets sold from 6:30, drawn 7PM

SUNDAY:

Meat & Seafood Raffle -
tickets sold from 4PM, drawn 5PM

accommodation now available at:



31 Callala Beach Road, Callala Beach
02 4446 5313 or 0460 543 859
beachandbaystay.com.au



Lunch Service:

Every Day From
12:00PM - 2:30PM

Dinner Service:

Tuesday to Sunday
5:00PM ONWARD
Monday (Pizzas Only)
5:00PM - 7:00PM

\$15 Lunch Specials EVERY DAY

Tuesday \$23 Rump Steak Night

Wednesday \$18 Chicken Schnitzel Night

Thursday \$20 Pizza Night

Saturday \$15 Club Beef Burger Lunch Special

Sunday Roast \$20 Lunch & Dinner

ALL WEEKLY SPECIALS DINE-IN ONLY

TUESDAY:

Happy Hour from 4PM - 6PM

Social Darts from 5PM

Trivia starting 6:30PM

THURSDAY:

Bingo from 11AM

Happy Hour from 5PM - 7PM

Pool Competition - rego from 6:30PM, starts 7PM

Member's Badge Draw 6:30PM, 7:15PM, 7:45PM

SATURDAY:

Live Entertainment Every Week

LAST SATURDAY OF MONTH:

Second Chance Draw & Members Badge Draw

SUNDAY:

Fisho's Weigh-In on 4th Sunday at 2PM

Callala RSL Country Fishing Club



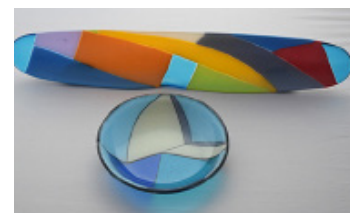
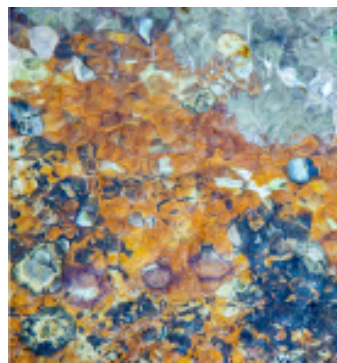
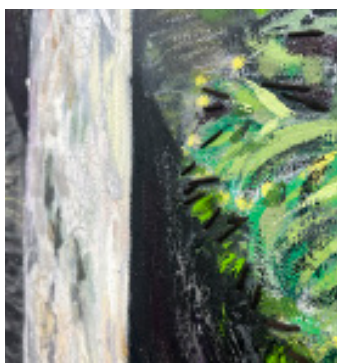
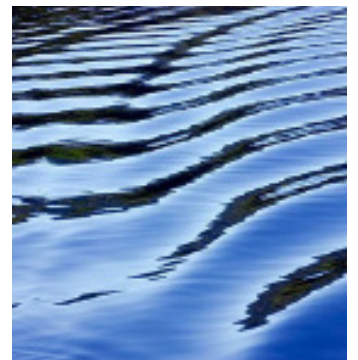
Callala Beach Road, Callala Beach 2540

**COURTESY BUS AVAILABLE FOR A GOLD COIN DONATION
SERVICING CALLALA BAY, CALLALA BEACH, AND MYOLA
MONDAY TO SATURDAY FROM 4PM, SUNDAYS FROM 3:30PM**



currarongarttrail.com.au

first Saturday of every month
10am - 2pm



Emergency Phone Contacts

Situation/Service	Phone Number	Website
Injury or Health Crisis	000	ambulance.nsw.gov.au
Motor Vehicle Accident	000	police.nsw.gov.au
Police	000	police.nsw.gov.au
Police – Non Emergencies	131 444	police.nsw.gov.au
Police Crime Stoppers	1800 333 000	police.nsw.gov.au
Household Fire / Hazmat	000	fire.nsw.gov.au
Bushfire	000	rfs.nsw.gov.au
Shoalhaven RFS District Office	4424 4424	rfs.nsw.gov.au
Bushfire Survival Plan	-	rfs.nsw.gov.au
Bush Fire Information Line	1800 679 737	-
Flood, Storm and weather warnings	-	bom.nsw.gov.au
Storm / Flood	132 500	ses.nsw.gov.au
Power Outages	131 003	endeavourenergy.com.au
Main Road Closures	132 701	livetraffic.com
Local Road Closures	1300 293 111	shoalhaven.nsw.gov.au
Shoalhaven City Council	1300 293 111	shoalhaven.nsw.gov.au
Shoalhaven City Council After Hours	4421 3100	shoalhaven.nsw.gov.au
Shoalhaven Hospital	4421 3111	-
Milton Hospital	4455 1333	-

If you are **deaf** or have a **speech** or **hearing impairment** dial **106** for the Text Emergency Relay Service

Useful Apps & Websites

Visitors to the area can download the following free mobile apps to stay informed of the latest advice and information in the event of an emergency.

Emergency+ App

The Emergency+ app is a free app developed by Australia's emergency services, Government and industry partners.

The app uses GPS functionality built into smart phones to help a Triple Zero (000) caller provide critical location details required to mobilise emergency services.



emergencyapp.triplezero.gov.au

Other Helpful Apps & Websites



Fires Near Me NSW



Floods Near Me



Weather Zone



COVID Safe



BOM



Marine Rescue



Live Traffic



Facebook



Twitter



DISASTER DASHBOARDS



shoalhaven.disasterdashboards.com/get-ready/overview



Bird Flu



Karin Watson spoke to the CBCA General Meeting on Wed 11 Sep 24 on the topic of Bird Flu, what we need to know about it and how it will affect us. Karin has been a Callala local for 14 years

and has a Masters degree in Wild life Health and Population Management. She has been a ranger and worked for the Department of the Environment among other diverse roles. Karin believes we should all be aware of the threat that avian flu is to our bird life and us.

H7 Is the classification that is currently outbreaking in chickens in Victoria. This is like COVID for birds and is a highly pathogenetic type.

Worldwide, 865 human cases have been recorded with 456 deaths from 2003- 2021. This results in about a 50% chance of humans dying from it if they catch it. No examples yet or human to human transmission.

H5N1 has spread to all continents except Oceania.

40% of Peru's pelicans and 76% of Scotland's great Skuas have been killed from this virus. Australia's sealions are at risk.

It's a water bird disease. It will probably arrive on a water migratory bird.

In Australia the risk to our avian fauna is high, the risk to our mammal fauna is likely to be moderate but Australia's endemic and endangered seal lions is high.

Things to look out for:

- If you see several birds in a group looking unhealthy or dead, lacking coordination, twisted necks, diarrhea, difficulty breathing, it's important not to touch them. The animals will not recover once they are infected.
- DO NOT TOUCH THEM.
- Quick reporting is essential. Phone 1800 675 888
- Record the date, time location. Take photos or footage.
- Report unusual mortality to the above number.
- Do not let your dog go near dead or sick birds

The risk to our birds is HIGH. The consequences are predicted to be catastrophic.

Crookhaven Mechanical Repairs

4447 5845

FREE Pick - Up Callala - Bay - Beach - Myola
We Can Service Your NEW Car AND Protect YOUR Warranty
Major Trip Prep - Suspension Upgrades - Bullbars - Accessories



ARC-AU21881  crookhavenmechanical.com.au  MVRLic35947

Contacts:

• Victoria Maudson 0424 590 105 • Gail Fitzgerald 0412 930 080 • Megan Hodges 0433 668 453

SEPTEMBER NEWS

NEW BOAT AREA I.B.C. WICKING BEDS

Our aim is to lengthen the time between needing to fill up the water reservoir. The wicking principle is that you want to draw water up from the base and deliver it to the soil. Our plan is an amalgam from many sites that educate gardeners of the principles of wicking.

For details please look on the website or call in.

FRUIT

Our citrus trees are presenting us with blossoms and new growth at the moment. We are very hopeful that the Tahitian lime will produce fruit this next fruiting season, as it hasn't settled into a fruiting regime yet. Even the Washington Navel, which has been moved a couple of times, is liking its new permanent home up in the sensory area.



The strawberries are waking up from their winter slumber and are keen to give us fruit.

After a severe scale insect attack, our fig is now shooting beautifully. We hope it will bounce back with full vigour and perhaps present us with some delicious fruit.

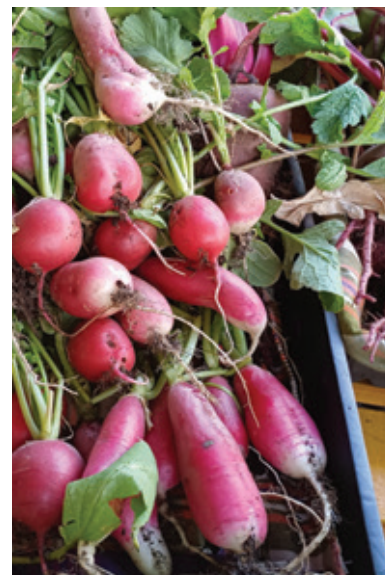


This peach tree has a few problems, one of which was identified as peach leaf curl, a fungus causing leaf puckering and distortion. Yet to tackle this one! We have some very surprising late passionfruit. They are full of pulp and quite delicious.

VEGETABLES

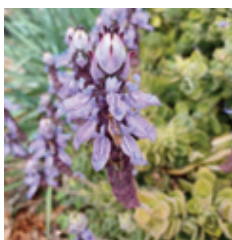
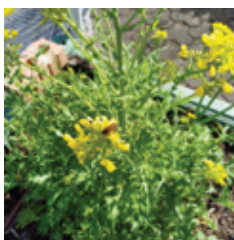
The cauliflowers are just not developing fully. Our cauliflowers, whilst seemingly healthy, did not produce heads beyond a large golf ball size. This occurred across two beds. When left in the garden beds, some of the heads then opened and progressed toward setting seed. They could, however, be used in a stir fry! Anyway, a bit of a disappointment with no clear answer, except perhaps lacking water at crucial times. Lots of beautiful leaves! We are now prepping the bed for some quick cos lettuces after the cauliflowers were removed.

The radishes were just right for our September market day. Those in the photo are Cherry Belle – round and smooth skinned, and French breakfast – more elongated with white tops. They both proved a hit with our Produce Market customers. Some of the Winter radishes were impacted by rain just at the wrong time, causing them to split. But not these ones!



The mizuna has been prolific and is now at the next stage with beautiful yellow flowers that are attracting bees to pollinate the other fruit and veg.

The next succession of snow peas has reaped many pods - just under 2kg in the last 3 weeks, around market day. There were more of course, but who can resist munching on them as we harvest them? Or taking them



home to eat after a busy time volunteering at the garden. They are so fresh! It will soon be getting too hot for their preferred growing conditions so we are enjoying their abundance while we can.

FLOWERS

Beautiful flowers are in bloom right now including a rock orchid, nestled just outside our shed window. What a joy to see!

SPONSORS



Steve, the sponsor of Bed 4, called in to the Produce Market. His business is garden maintenance, and he was very interested to see what was growing in his bed. At present it is rainbow chard, beetroot, peas and lettuce. The Ukellalas gave us some tunes at the Produce Market then posed at the Jungle Boat Bed that they are sponsoring

HOW AND WHEN CAN I JOIN IN? CAN I GET MORE DETAILS?

General Meeting. Saturday 5th October from 2 p.m.

Working Bee... Sunday 6th October from 9 a.m. until lunch time

Pick and Prep Friday... 11th October from 3 p.m.

Produce Stall... Saturday 12th October from 8 a.m. to 12 noon

Project Day Sunday 20th October from 10 until 2 (lunch provided)

The Family Fun Fridays

**Friday 27th September
& Friday 25th October** from
9.30 to 11.00

(The August FFF was canceled due to the forecast of high winds.

The kiddie's boat will be planted up soon.)

**Bring the kids along
for fun and food.**

CHRISTMAS RAFFLE

This is in progress and will be **HUGE!**
Look out for our Gorilla cart full of wonderful goodies and our busy volunteers selling tickets in Callala Bay.



WE NEED MORE VOLUNTEERS

Do you have ANY free time that you would like to spend being useful in our Community Garden? No previous experience required!

You don't need to bring gardening know how, just enthusiasm.

Non Gardeners welcome too! It is time for the committee to be reshuffled.
Can you bring your administration skills to help us run the Community Garden?



Callala Bay Pharmacy

2/55 Emmett Street, Callala Bay 2540 Ph: 4446 4251

Hours: Mon-Fri 9am-5.30pm; Sat 9am -12.30pm

Friendly, professional service

- Diabetes Australia supplies • Baby weighing • Gift lines
- Blood pressure monitoring • Medication packing

Phone: 4446 4251

Dr John C Wright B.V.Sc.

CULBURRA VETERINARY CLINIC

7 Weston Street, Culburra Beach

9am-11am weekdays

4-6pm Mon, Tue, Thurs

4-5pm Wed, Fri

10am-12pm Sat

CALLALA VETERINARY Consulting Room

22 Emmett Street Callala Bay

1-3pm weekdays by appointment

Please phone: **4447 3851** for appointments, enquiries or after hour calls



E & S Painting Services

- Interior & Exterior Painting
- Friendly Local Service
- Excellent Rates
- Quality Assured

M: 0422 560 696 H: 4446 5056

Graham Worts



Vinnies

CALLALA BAY SHOP

- **High quality second-hand items**
- **Clothing, bric-a-brac, books, linen, beach towels, toys, games, DVDs, jewellery and much more!**

VOLUNTEERS NEEDED

**YOUR TIME IS THE MOST VALUABLE
GIFT YOU CAN GIVE.**

For details of how you can help,
visit www.vinnies.org.au or pop into the shop
for an application pack.

Find us at: **59 Emmett St, Callala Bay**

Opening hours: **Monday to Friday – 8.30am to 4pm,**
Saturdays – 8.30am to 2pm (during summer/peak times only)

**We welcome donations of non-bulky items during opening
hours. For pickups, please call 4421 7244.**

Callala Markets

There were no Callala Markets in September due to the local Council elections. So, all our stall holders are revved up for a great showing in October.

This month we welcome a new stall holder, RAE, who hand knits a beautiful selection of soft toys. These are great for a birthday present, new baby gift or a baby shower present.

Like our other stalwart stall holders, RAE offers a unique, bespoke and colourful range of quality items. You're bound to find that perfect present for that special person or any other occasion amongst our wide range. Or, it's a perfect opportunity to get started on that Xmas list.

Callala Markets are local people supporting the local community. So come along and enjoy meeting our wonderful artisans and see what's on offer. Our next Markets are on Saturday 12 October from 8am to 1pm at the Callala Bay Community Centre, Emmett Street, opposite the Bayview Shopping Centre.

The Callala Community Garden will be conducting their Markets Day in conjunction with the Markets so come on down and check



Hand knitted soft toys for that special child

out their range of fresh seasonal produce. Always a big attraction for local households.

We always hope for fine weather, but we'll be there rain, hail or shine.

Want to join us? Contact Sandra on 0413581419.

See you at the Markets.



2nd Saturday

EACH MONTH

**42 EMMETT ST,
CALLALA BAY**

8:00AM - 1:00PM





Tennis @ Callala Bay



Fancy a hit?

Located here in Callala Bay, the courts are attached to, and managed by the Callala Bay Progress Hall. They are located at the corner of Wearne and Morton St.

Bring your own rackets and balls!

Ring 444 64 313 to book

Available for casual and regular bookings.

Lessons—call Daisy on 049 053 7551

Route

120



Currarong, Callala Bay, Callala Beach, Myola to Nowra and Bomaderry

Departs	School Days		Monday to Friday		Saturday and School Holidays			
	AM	AM	AM	PM	AM	AM	PM	PM
Currarong	♂		♂	♂	♂	♂	♂	♂
Crookhaven Pde	N/A	7.15 T	8.25 T			8.00		
Yalwal St	N/A	7.16 T	8.26 T			8.01		
Tennis Court	N/A	7.17 T	8.27 T			8.02		
Progress Hall	N/A	7.18 T	8.28 T			8.03		
Cambe & Nowra Rds	N/A	7.20 T	8.30 T			8.05		
Callala Bay								
Sydney Ave	6.04	7.35 T	8.47	10.10	1.45	8.20	10.10	1.45
Boorawine Terrace	N/A	7.30 T	8.40	10.13	1.48	8.23	10.13	1.48
Emmett Street Shops	5.58	7.30 T	8.46	10.16	1.53	8.26	10.16	1.53
Callala Public School	N/A	7.35 T	8.45	10.17	1.54	8.27	10.17	1.54
Lackersteen and Emmett	6.02							
Callala Beach / Myola								
Queen Mary Street	N/A	7.15 T	8.15	10.20	1.58	8.31	10.20	1.58
Catherine St Myola	N/A	7.20 T	8.20	N/A	N/A	8.36	N/A	N/A
Sir Henry Crescent	N/A	7.22 T	8.23	10.23	2.02	8.40	10.23	2.02
Callala Beach Shops	5.51	7.25 T	8.25	10.25	2.04	8.42	10.25	2.04
Watts and Lennox St	N/A	7.27 T	8.28	10.28	2.07	8.45	10.28	2.07
Mayfield		7.40 T						
Stewart Place Nowra	6.43	8.20	9.20	11.00 #	2.55	9.20	11.00 #	2.55
Bomaderry Rail	6.33	8.15	9.30	11.10 #	2.40	9.30	11.10 #	2.40
Nowra Tafe		8.20	9.32					
Stocklands Nowra	N/A		9.40	#	2.50	9.40	#	2.50
Train Departs Weekdays	6.43	8.17 & 9.20	10.00*	11.23 & 12.00pm*	16.12	10.00*	11.23& 12.00pm*	16.12
Train Departs Saturdays						10.31	12.29	16.33

* Bus Service 737 Bomaderry Station to Kiama Station

T Transfer at Shoalhaven High School for Nowra and Bomaderry

Drops only as Required.

SERVICES DO NOT OPERATE SUNDAYS AND PUBLIC HOLIDAYS

T Transfer at Callala School for Nowra and Bomaderry

Route

120



Nowra and Bomaderry to Callala Beach, Myola, Callala Bay and Currarong

	Monday to Friday		Monday to Friday		School Days		Saturday and School Holidays			
	AM	PM	PM	AM	AM	PM	AM	PM	PM	PM
Train Arrives Weekdays	8.40* & 9.15	11.40* am & 12.2	1.40* & 2.17				8.40* & 9.15	11.40* am & 12.27	1.40* & 2.17	17.10
Train Arrives Saturdays							8.19	12.21	2.19	
Departs	♂	♂	♂				♂	♂	♂	♂
Stewart Place Nowra	9.20	12.20	2.55				9.20	12.20	2.55	5.24
Bomaderry Rail	9.30	12.32	2.40				9.30	12.32	2.40	5.17
Nowra Tafe	9.32	12.34			3.30 \$473					
Stocklands Nowra	9.40	12.40	2.50				9.40	12.40	2.50	5.34
Mayfield					3.55					
Callala Bay					\$473					
Callala School	10.17		3.35		4.11		10.17			#
Sydney Ave	10.10		3.43		4.05		10.10			N/A
Boorawine Terrace	10.13		3.40		4.08		10.13			#
Emmett Street Shops	10.16		3.35		4.10		10.16			
Callala Beach					\$473					
Queen Mary Street	10.20		3.46 T		4.22		10.20			N/A
Catherine Street Myola	N/A		3.51 T		4.27		N/A			N/A
Sir Henry Crescent	10.23		3.55 T		4.30		10.23			N/A
Callala Beach Shops	10.25		3.45 T		4.21		10.25			#
Watts, Lennox Road Loop	10.28		3.42 T		4.18		10.28			N/A
Currarong										
Cambe & Nowra Rds			3.50 T		4.20 T					N/A
Progress Hall			3.53 T		4.23 T					N/A
Tennis Court			3.55 T		4.24 T					N/A
Valwal St			3.57 T		4.25 T					N/A
Crookhaven Pde			4.00 T		4.26 T					N/A

* Bus Service 737 Kiama Station to Bomaderry Station.

T Transfer at Callala Bay for Callala Beach, Myola and Currarong.

Drops as Required.

T Transfer at Callala Bay for Currai \$473 Bus for Callala Bay, Callala Beach, Myola and Currarong.

SERVICES DO NOT OPERATE SUNDAYS AND PUBLIC HOLIDAYS.

Culburra Beach & District Garden Club Inc.

Hi everyone, Vice President Annette welcomed guest speaker Superintendent Craig Ireland from Lake Illawarra Police District and his topic was Scam Awareness. This is a problem many of us are becoming familiar with in our daily life. A scam is when someone deceives you to steal your money or personal information. Most common types of scams as outlined by Craig are -1. Impersonation -you think they are family, friends or your bank or local PO. 2.investment- where scammers offer you a way to make money 3.jobs or employment- they pretend to be hiring staff and ask for personal information 4.products and services- they pose as a buyer or seller and advertise goods that don't exist. 5. Romance- they ask you to send money so they can come to Australia or that they are ill and need money . 6.Unexpected money- they tell you that you have won or inherited money and ask for bank details or to make a deposit. 7.threats and extortion- they pose as someone else e.g. police and threaten to release personal information. Scammers use fake emails and websites.

Tips and tricks to protect yourself.

- a.automated voices are usually a scam b. Never give out personal details
- c. If you think it's legitimate, verify it by asking for a phone number.
- d. Never give out your bank details e. Carefully look at the grammar and spelling
- f. Check the time you receive emails and calls – genuine businesses will contact you during business hours not 2am in the morning.

If you get scammed – contact the bank, report it to local police and Scam watch.

Craig recommended a government publication The little Book of Scams from the ACCC. We thanked Craig for his information and helpful hints, and we hope that all our members are now more aware of how easily we can get duped.

Theme for the Display table was Spring Blossoms. Usually at this time of year our gardens are looking lovely but in the past few weeks they have taken a beating from the recent windy conditions. A tiny flowering plant which has withstood the wind is Nemesia. These annuals and perennials(depending on the species) are easy to grow and will continue flowering well for long periods of time. They are fast growing, compact and very hardy making them ideal for borders, garden beds, pots and containers. Nemesia copes well with the extremes of heat and cold, and a light trim back will rejuvenate the plant and quickly bring on another flush of flowers, making them ideal for a long -lasting display of colour. Because they come in almost every colour possible (except green), you can easily find a shade for any combination. In addition, many varieties come in bicolour blooms that, up close, are reminiscent of miniature snapdragon like blooms. Nemesia is self-seeding, so if you allow the seeds to set, they can germinate and come back .

You are welcome to attend our next meeting on Saturday October 19th 1.30pm at Culburra Anglican Church, Penguin Head Rd, Culburra Beach. Cheers to all and happy gardening, Doris Carpenter: 4446 5631





CALLALA YOGA & PILATES

.....))) ● ((.....)

WEEKLY CLASSES
OCEAN VIEWS

CALLALA BEACHFRONT HALL, 89 QUAY RD
EMAIL CARLA@THESTATEOFCALM.COM
FOLLOW @THE_STATE_OF_CALM
CALL 0422 433 159



WAYNE'S WELDING

ABN: 72 721 264 751

Wayne Birt

Aluminium or Steel Boat Repairs

Trailer (box or boat) Repairs

MIG and TIG

Custom work for cars, boats or caravans

Phone: 0407 203 041

OVER 50? RETIRED?

**Invest \$25,000
in my not for profit
boating/tourism venture
and buy a partnership in
a hands-on business-
hobby and interest.**

**for full details see website:
www.wooden-boat-charter-australia.com.au
*The Time Warp River Cruise Company***

Thinking of having a function or meeting . . .



Why not have a look at the Callala Community Centre?

There is table seating for 110 with crockery and cutlery and a modern kitchen.

The centre is airconditioned and has state-of-the art audio visual capability for presentations, training and other entertainment included as part of the hire fee.

Car-parking is adjacent to the Centre and the Callala shops are opposite the Centre.

The Centre has grass surrounds, giving you the option of outdoor training as well as indoor.

If you have an exercise or social group or are looking for a place to hold your next celebration, call Cynthia on **0412 121 737** for enquiries. You can also look for us on **Facebook**

FREE

Pre-Loved Clothing & Book Stall

First Saturday of the Month
at the
Callala Community Centre

9.30am to 12.00 NOON

Clothes in good condition can be dropped off at the stall (on the day only). If clothing can be delivered by 10am; this will allow them to be displayed.

Sponsored by the Anglican Church, Callala

Defibrillators in Callala Bay



There is a number of defibrillators in Callala Bay.

They are located at:

- Club Callala
- IGA Supermarket
- Jervis Bay Sailing Club
- Callala Community School
- Callala Medical Centre
- Callala Community Centre
- Callala Rural Fire Brigade
- Myola Tourist Park

If you know the location of others, could you please contact Merry on 0439 809 088.

YOUR AD HERE

Advertise Your Business With
The **CBnews** Today!

Contact the Editor for more info
editor.cbcanews@gmail.com



Callala Bay
Open 7 Days A Week
Market-Fresh Fruit and Vegetables
Lotto Newspaper ATM

Ph: 4446 4811

It Pays to Shop Independent

Located in Bayview Plaza, 55 Emmett Street, Callala Bay

How the locals like it.

The Anglican Parish of Culburra Beach

Anglicare Op Shop

Shop 3/4 Weston Street, Culburra Beach

Opening Hours:

Mon-Fri 9am - 4pm

Sat. 9am-12pm

** Closed Public Holidays*

Clothing, bric-a-brac, books, toys, linen, games, DVD'S, jewellery and more.

EFTPOS available

Saleable Goods are most welcome, but we can't accept furniture, white goods, mattresses, encyclopedias, computer ware and videos.



You can drop goods at shop or in charity bin situated at Culburra Anglican Church, Penguin Head Rd, Culburra.

If you would like to volunteer, please contact

Manager Neroli McCusker:

4447 4084 (Shop) or 0401 466 590



WELCOME to the Callala Community Centre, conveniently located opposite the shops in Emmett St, Callala Bay.

We are one part of the Shoalhaven Community Information Network (SCIN). Our technology has been upgraded to include solar panels, a storage battery, and satellite communications to provide an independent, continuous, communication solution with the Nowra Emergency Centre.

The information can be seen on the screens located at the Centre.

An audio-visual system has been installed in the Centre offering flexible and comprehensive facilities, including;

- **blue tooth; computer connectivity; the ability to operate DVDs and CDs and play personal audio-visual files from a USB drive or SD memory card.**

If you want to have a wedding; memorial service; business conference; group gathering or family reunions the Callala Community Centre is well worth considering.

Our facilities include

- **A well-equipped kitchen; air conditioning; raised stage and off-street parking, and**
- **Crockery, cutlery and glasses and seating for up to 120 people**

**For all hiring enquiries contact Cynthia on 0412 121 737
or email cynirwin974@gmail.com**

Follow us on Facebook at Callala Community Centre.

Callala Bay Progress Hall and Tennis Court



Looking for a venue with history and charm?
Available for both casual and regular hire
*Recently renovated ... and now with new audio visual
equipment available! Reasonable rates.*

Bookings Ph: 444 64 313
or via Facebook
75 Boorawine St, Callala Bay

Regular Community Users

Dru Yoga: Monday (2:45pm)
Craft Group: Tuesday (10am)
Friends of Dance: Tuesday (2:30 pm)
Yoga: Thursday (9am)
Tai Chi: Saturday (8am)

Lyn ph 0419427574
Yvonne ph 444 66 280
Ann ph 0418 477828
Anna ph 0405 102 234
Jenny ph 04477 43179

Tennis Lessons: Saturday (midday)

Daisy 0490 537 551

<https://callalabayprogresshall.weebly.com/>

FROM THE DOCTOR

With the warm weather around the corner, I am very much looking forward to being outdoors and enjoying the sun and the beach. As we all know, too much sun and skin cancers can occur, and that's why it's super important to slop, slop and slap.

I do also want to point out about the more insidious skin cancers that may occur.

Non-pigmented melanomas, also known as amelanotic melanomas, present a diagnostic challenge due to their lack of the typical dark pigmentation seen in more common melanomas. These melanomas often appear as pink, red, or skin-colored lesions, making them easily mistaken for benign conditions such as eczema, warts, or insect bites. It is crucial to remain vigilant for unusual skin lesions, especially if they are asymmetrical, have irregular borders, or change in size or shape over time.

Key diagnostic clues include the lesion's rapid growth, ulceration, or persistent bleeding. Dermoscopy can aid in distinguishing these lesions from benign growths, but any suspicious lesion should be referred for biopsy. Early identification is essential, as non-pigmented melanomas tend to be more aggressive and are often diagnosed at a later stage.

I encourage my patients to employ the SCAN technique to look for skin spots (Sore, Changing, Abnormal or New). If you want to find out more, pick up a pamphlet at Callala Medical Centre or book a skin cancer check with Dr Zhou on 4446 5350.



Callala Before and Afternoon Care for
school-aged children by qualified and
caring staff.

For information please call Katie-

0419917793 or 0427976669

email: callalaooshbykatie@gmail.com

**I went to the paint shop
to get thinner
It didn't work!**

The Groutfather

Tile, Grout & Silicone Hygiene Cleaning, Sanitising (Mould)
& Restoration/Repairs

Specialising in:

Showers, Bathrooms, Kitchens, Floors & Outdoor areas

FREE inspections/Quotations

Servicing Callala Bay & Beach, Myola & Culburra

George - 0481 811 962 – Email: shelmara62@gmail.com



Callala Public School Parents & Citizens Association Inc.
Emmett Street, Callala Bay, NSW, 2540
callalapandc@gmail.com

Callala Public School P & C Canteen Volunteers Needed

Callala Public School's canteen is operated by the P&C with all profits invested back into the school.

It is a purely volunteer run canteen, with Dan Applebee being our manager who looks after the daily running of the canteen along with the help of other volunteers.

At the present time we only have one other volunteer. In order to keep the canteen operational we need more volunteers. If you have time to spare 9am - 12, be it once a week, fortnightly, monthly or even once a term we would love your help.

Duties include preparation, heating and serving of lunch orders, assisting with window sales at 1st break and some light cleaning.

To volunteer in the canteen you are legally required to complete the following:

Working With Children check, which is obtained through Services NSW. It's free as you are a volunteer.

<https://www.service.nsw.gov.au/transaction/apply-for-a-working-with-children-check>

Food Handler Basic Training online through NSW Food Authority

<https://www.foodauthority.nsw.gov.au/training/food-handler-basics-training>

Can you help us? It's only 3 hours and 15 minutes. For more information or assistance in completing the online forms please contact the school office on 44464352 and one of our P & C representatives will contact you, or email us at callalapanc@gmail.com

We look forward to meeting you.

To our Readers Public Conveniences for Wowly Creek

You will recall the CBCA has been seeking information from the Council about having toilets installed at Wowly Creek for all the usual hygiene etc reasons. The CBCA has received a response which unfortunately is in the negative. In essence, the reasons are:

- Council's Community Infrastructure Strategic Plan (CISP) makes recommendations for the future provision, priorities, and funding of community infrastructure at local, district and regional levels. Under the CISP, Wowly Creek Reserve is identified as a local level park.
- The provision of amenities within local parks is not recommended under the CISP.
- Further development of recreational facilities within the reserve would potentially negatively impact on the environmental values of the reserve through necessary site disturbance, including vegetation clearing and excavation during construction activities, plus soil disturbance and site denudation over time due to increased visitor activities relating to the developments.
- Since upgrades to Wowly Creek Reserve have not been identified in any of Council's strategic plans or forward planning working documents, there is no capital or operational budget for the provision of any additional infrastructure that is not already provided at the site.

The nearest public toilet to Wowly Creek is at the Callala Bay boat ramp, approximately 700 metres (nine-minute walk) from this location.

The CBCA will continue to represent the community's wishes regarding this matter – we will not be deterred.

Callala Chess

The Callala Chess group continues and meets at Club Callala on the 1st & 3rd Wednesday at 6 pm. It's a great way to make friends with others who share an interest in chess, and it doesn't matter what your skill level.

Some of the players also arrange games outside of these dates and are also connected with other chess groups.

Hope to see you there.



Election Day 14 Sep 24

What a great day it was too! The weather was fine, albeit a trifle breezy and the locals and others were busy deciding who was going to play nicely in the Council elections. The CBCA was present cooking democracy sausages, and an excellent morning was had by all under the tutelage of Morris and Gary. Our thanks go to Jeff at Ramos bakery, Sally at IGA and of course Scott for his excellent snags. Jim Townsend helped with the set-up and tear-down and the BBQ was provided by the Callala Community Center. All told it was a great community event.



Bushcare

At time of writing (20 September), we really need rain. Nice softly falling rain. Goldilocks rain, not too heavy, not too light :)

However despite the dry soil, our native bushland is awash with spring blossom. For me, this is so uplifting for the mood. Although not so much fun for those suffering from sinus or allergies. In our Bushcare sites, certain weeds are struggling in the drying soils. I am trying to take advantage of this in my regeneration work - looking at you Veldt Panic Grass!

Last month I made mention last month of the Thin Pencil Orchids we were observing through the Lackersteen St site. Not long after I submitted that column I did some work in that area and was puzzled at the absence of the sprays of orchids that had been close to the path. Had I imagined them? Sadly no, one of my colleagues confirmed that the orchids had been there, but someone had presumably cut them and taken them. Really? That's disappointing.

There are more delicate native orchids in our area now. It's the season for the lovely Tiger Orchids. I like to start my day with an early beach walk, and wander home through Boorawine Creek Reserve. First there was one Tiger Orchid, now there are many!

The colours of the flowers are yellow and brown. I'm sure it's entirely a coincidence that the colours of my favourite native orchid are the same as my footy team. Yes, must be a coincidence!

These days our team focus on the more gentle aspects of Bushcare, often doing what may look random, but is actually targeted weeding to encourage regeneration of native grasses and scramblers. But recently a couple of us took our newly appointed group supervisor Wendy Roberts through just one part of the vast area between Callala Creek and Benton Sands. It's difficult terrain to walk through these days due to the density of vegetation. But twenty years ago this area of now spectacular natural bushland was being choked by huge swathes of

weedy trees like Lantana and Senna. Every time I scramble through the area I'm in awe of the incredible transformation that was achieved by a large, enthusiastic team of Bushcare volunteers. This is another thing that lifts my spirits.

What daunts me is the change in attitude of people to volunteering these days. Maybe it's a generational thing. Given that the main purpose of this column is to recruit volunteers and in four years, none have been

recruited, I haven't succeeded. Well, if I can't recruit volunteers, it turns out I can breed them. Here's a keen young Bushcarer who wants to take out the weeds just like nana.

Our regular Tuesday morning two hour Bushcare sessions now start an hour later, at 9am. Any further information or if you would like to try out Bushcare at another time, my name is Diana, phone 0419 531 902.



Have your say Illawarra-Shoalhaven

We'd like to hear from you about how we can plan for the future of transport in the Illawarra-Shoalhaven region.

The NSW Government has committed to developing Strategic Regional Integrated Transport Plans (SRITPs) for the nine regions across the state. Transport for NSW will deliver on this commitment, with the draft Plan for the Illawarra-Shoalhaven currently under way.

You have been identified as a key stakeholder in the development of the draft Plan and we are keen to hear from you to better understand transport issues in the Illawarra-Shoalhaven region.

You may be aware that we previously consulted on the draft Illawarra-Shoalhaven Regional Transport Plan (RTP) in late 2020 and early 2021. We are building on the comprehensive work already undertaken and all feedback provided during previous engagement will be used to inform the new draft Plan.

Have your say

We are committed to meaningful engagement and would like to invite you to provide any insights to inform development of the draft Plan. If you previously provided feedback on the RTP and it remains valid, we thank you for your valuable contribution and welcome any further comments.

Insights can be provided via the Have Your Say page, haveyoursay.nsw.gov.au/SRITP, where you can use the interactive map to share thoughts about specific transport issues in the region, offer ideas or suggestions on transport solutions, or upload a formal submission.

Comments are welcomed until Friday 29 November 2024.

Next steps

The draft Plan is expected to be available for public exhibition in mid-2025. After public exhibition, we will refine the draft to reflect feedback from the community and key stakeholders.

About the Illawarra-Shoalhaven Strategic Regional Integrated Transport Plan

The Illawarra-Shoalhaven Strategic Regional Integrated Transport Plan is currently in development and will align with the Department of Planning, Housing and Infrastructure's (formerly Department of Planning and Environment) Illawarra-Shoalhaven Regional Plan 2041 to efficiently respond to anticipated changes in land use, demographics and travel demand across the region.

The Plan will identify achievable actions governments can take to deliver better transport policies, services and infrastructure to the region. This will include economic opportunities and public transport options to support jobs growth and housing across the Illawarra-Shoalhaven region.

The Plan will consider:

- Maximising the use of the existing transport network in the area – including rail, road and maritime infrastructure and services
- Improving transport options, in all forms, for our communities – addressing obstacles to connecting communities and providing more choice and better access including for public and active transport for people in NSW
- Supporting tourism through connectivity to and from attractions, including consideration of rail.

We look forward to hearing from you

Your valuable insights and comments in this early phase will inform the development of the draft Plan. We look forward to listening and working with you to shape Transport for NSW's planning across the Illawarra-Shoalhaven region.

Contact us

If you have any questions or would like more information, please contact the project team:

engage.SRITPs@transport.nsw.gov.au

PO Box 477 Wollongong NSW 2520

CULBURRA & DISTRICTS COMMUNITY HEALTH SERVICES Inc.



Hello EVERYONE,

We would like to tell you a little about our Culburra & Districts Community Health Services Inc.

We are a Not-for-Profit organisation and was incorporated (CDCHS) on 8th March 1988.

We have a great Medical Bus service for you to avail yourselves of if needed, runs Monday-Friday (no Public Holidays). If you have a Medical appointment (only) either locally or into Nowra and you would like transport, please phone:

CULBURRA PHARMACY
187 PRINCE EDWARD AVE
CULBURRA BEACH
02 4447 2382

All you need to do is supply your details –

NAME, ADDRESS, PHONE NUMBER, DATE & TIME, WHERE YOUR MEDICAL APPOINTMENT IS THAT YOU NEED TO GO TO AND RETURNING FROM.

The Chemist shall put your details onto the Medical Bus run sheet for that day.

We cover the areas of: Currarong, Callala Bay, Callala Beach, Myola, Orient Point, Culburra Beach, Pyree, and Greenwell Point.

A small donation is always welcome as this along with our Op Shop helps to keep this fabulous community service running.

If you would like to be a volunteer Bus Driver (no special licence is required) or Op Shop Gem, please contact:

Contact: Neil Watson (Bus Drivers) 02 4447 4713
or
Pat Porter (op Shop) 0408 019 930.

A Brief Convict History of Jervis Bay - Dr Carol Liston

The Callala Bay Community Association has hosted the fourth and final Port & Talk evening at the Callala Bay Community Centre in Emmett Street.

Sydney resident Dr Carol Liston based her talk on a book by Babette Smith titled *The Luck of the Irish: how a shipload of convicts survived the wreck of the Hive to make a new life in Australia.*

Dr Liston gave us a fascinating glimpse of colonial life in the mid nineteenth century and a deeper understanding of the history of our area by chronicling the story of the Hive, which ran aground in nearby Wreck Bay in 1835.

Locals from Callala and beyond enjoyed the interesting topic, which included details of gold treasure, several shipwrecks, the first rescue in Australia by a steamboat and the personal involvement of two colonial pastoralists John Lamb and Alexander Berry. The evening ended with refreshments with engaging discussions amongst the audience members and speaker.

Dr Carol Liston AO is an Adjunct Associate Professor at Western Sydney University. Her research covers early colonial history in New South Wales, particularly the colonial development of the County of Cumberland, which includes most of the Sydney metropolitan area.



Dr Liston's publications include histories of Campbelltown, Parramatta and Liverpool; biographies of Sarah Wentworth, and Thomas Brisbane; and accounts of both social life under Governor Macquarie and the convict women at the Female Factory, Parramatta.



The new Sharp printer has been purchased through the generosity of a grant from the Veolia Mulwaree Trust.

Truck & Forklift Driving School

Desire Bhugon

RMS Approved: LR, MR, HR, HC (Auto
and Manual)

OLDER DRIVER ASSESSOR



Tel: 02 444 66861 Mobile: 0418 654 572 Email: desdschool@bigpond.com



Callala Physiotherapy and Pilates

Pre and Post-operative Rehabilitation | Reformer Pilates
Sporting injuries | Arthritis management

www.callalaphysiopilates.com.au

Phone: (02) 4413 0349 Email: info@callalaphysiopilates.com.au

Property



Specialising in all aspects of real estate, Property One Realty has had a local presence for over 20 years. We offer sales, holiday and permanent rent services. Contact our team or stop in to discuss the best options for your investment.

Ensuring your next move is a positive one.

www.propertyone.com.au

44466800 | callala@propertyone.com.au | 9/55 Emmett Street, Callala Bay

COMMUNITY CONTACTS

Emergency Police Fire Ambulance: 000

Nowra Police Local Area

Command: **4421 9699**

Crime Stoppers: **1800 333 000**
(anonymous reporting)

Police Assistance Line: **131 444**
(non emergencies)

State Emergency Service: **132 500**

Jervis Bay Marine Park: **4441 7752**

Callala Doctor's Surgery: **4446 5350**

Shoalhaven City Council

General enquiries, business hours: **4429 3111**

Emergencies and after hours: **4421 3100**

Justices of the Peace

Howard Duncan: **4446 6535**

Dallas McMaugh: **0400 189 875**

Culburra Beach & District Garden Club

We meet every 3rd Saturday of month
Feb-Nov at 1.30pm

Venue: Culburra Anglican Church
Penguin Head Rd, Culburra Beach.

For more details contact

Doris Carpenter: **4446 5631**

Culburra & Districts Community Health Service

Visit the Op Shop and pick up a bargain!
Proceeds help maintain the Medical Bus that transfers people to Nowra for medical appointments from Greenwell Point, Culburra Beach, Callala Bay & Beach, Currarong and Myola.

Please contact Culburra Pharmacy on **4447 2382** to arrange transport.

Culburra Beach & Districts Men's Shed

Location: Beside the Banksia Community Hall, off Fred Evans Lane, Culburra Beach (IRT entry). **Open:** 8.30am to 1.00pm, Monday and Wednesday.

All enquiries: Phone **0494 055 329** or email **CBDMS1@outlook.com**

Culburra Beach Orient Point Men's Shed Inc.

Location: Old Scout Hall Cnr West Crest & Wollumboola Lane

Open 8:30am - 1pm Tuesday, Wednesday & Thursday

All enquiries:

John Castellan: **0498 023 781**

Max Ford: **0403 204 847**

Callala Community Garden

52 Emmett Street Callala Bay
Opposite The Shops

Victoria Maudson: **0424 590 105**

email: callalacommunitygarden@gmail.com

 /groups/CallalaCommunityGarden

Drop In's welcome

DISCLAIMER

The Publisher, known as Callala Bay Community Association Incorporated, does not accept any responsibility or liability in any way whatsoever with regard to any of the paying advertisers contained in this newsletter. Additionally the views and comments of all reports submitted are the responsibility of the person/organisations submitting same, including those from SCC (Shoalhaven City Council), which are usually copied verbatim from correspondence and are included for your information. The reports do not necessarily reflect the views of the Publisher.



Join the bank that's bigger for you.

Community Bank Nowra & Districts

Bendigo Bank
98 Kinghorne Street
Nowra NSW 2541

02 4422 7574

nowra@bendigoadelaide.com.au

Bendigo Bank



Vanessa Middleton

Licensed Real Estate Agent

0492 945 367

vanessa.middleton@ljhooker.com.au

nowra.ljhooker.com.au



LJ Hooker

Vanessa is a well known face in our community, a **local of Callala for 28 years** and working locally in real estate for the past **17 years** with extensive knowledge and insight into the local market. Her dedication to customer service, innovation, honesty and openness have been the cornerstones of Vanessa's record of success over many years. Known for her friendliness, understanding, enthusiasm & strong negotiation skills.

A consistent number of repeat referrals is a testament to her expertise.

If you are looking for a local in real estate for buying or selling contact me today.

Happier, healthier pets

South Coast Veterinary Services
is your local, independent and
exclusive veterinary care provider.

Our complete range of in-home
and mobile pet services take the
stress out of trips to the vet
... for happier, healthier pets.



SCVS

South Coast
Veterinary
Services

Book a visit, manage prescriptions and
pay online. Get in touch for more details.

Dr. Glynis Kuipers

0412 319 110

office@southcoastvet.com.au

www.southcoastvet.com.au