

Callala Bay NEWS

March 2021

Issue 103-2021

Monthly Magazine from the Callala Bay Community Association Incorporated



CBnews



- Lawn Mowing • Irrigation • Fertilising • Aerating
- Tree Work • Landscaping • Hedging • Mulching
- Rubbish Removal • Domestic & Holiday Rental Cleaning
- High Pressure Water Cleaning • Garden & Yard Make Overs



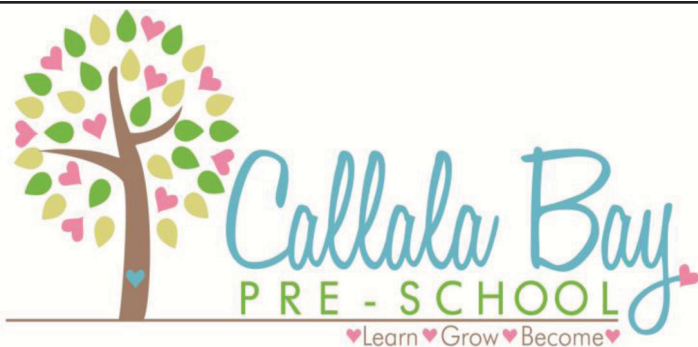
• Commercial • Domestic • Rural Properties



0415 732 801

ABN: 16 821 580 073

andrew@atbcontractors.com.au | www.atbcontractors.com.au



Enrolment for children 2 to 5 yrs

Open 8am – 4.30pm

University & TAFE trained teachers

‘School Readiness’ curriculum

Fee rebates available to eligible families

Awarded *‘Exceeding National Quality Standards’* by the NSW Department of Education and Communities.

For further information please call us on **4446 6089**



**first
national**
REAL ESTATE

Callala

4446 4313



Callala First National has been servicing the local area for more than 19 years and continues to strive to provide a service above and beyond our clients expectations. If you are considering selling or renting your property contact our friendly team on 4446 4313 or drop into our office at 58 Boorawine Terrace, Callala Bay.
www.callalafirstnational.com.au

CALLALA BAY NEWS

A monthly newsletter of the
Callala Bay Community Association Inc: 
ABN 68031980561

www.callalabaycommunityassociation.com
Email: admin@callalabaycommunityassociation.com

PO Box 14 Callala Bay 2540

President

Geoff Carne

Vice President

Duncan Marshall

SECRETARY/ Treasurer

Narelle Monaghan

MINUTES SECRETARY

Kaye Paris

COMMITTEE MEMBERS

James Morris

Joe Kowal

Sue Chapman

Julie Wotton

Lynn McDonald

John Fowler

Jacinta Flattery-O'Brien

EVENTS COMMITTEE

Julie Wotton

Lynn McDonald

NEWS EDITOR

Jake Khourey -

editor@callalabaycommunityassociation.com

INDEX

Musings from the Callala News Keyboard.....	Page 5
Community Church.....	Page 9
BushCare.....	Pages 11/13
Men's Shed.....	Page 15
Eye Health.....	Page 17
Garden Club.....	Page 19
Community Garden.....	Page 19
Fiona Phillips MP.....	Page 21
Local Bus Timetable.....	Page 20
What's on at Club Callala.....	Page 27
Bowls Report.....	Pages 31/33
Shelley Hancock MP.....	Page 33
Community Contacts.....	Page 34

Note from the Editor:

The CBnews proudly supports our community, consider subscribing for a small yearly fee.

Please contact me with any local issues or concerns with the intention of having it published.

Editor - Jake Khourey

Dan Mangan

Ph: 4446 6544

18/55 Emmett Street
Callala Bay 2540

**Your Local Butcher
The Meat Specialist**



MR MIKE SPARKLE BRIGHT

ABN: 50 534 685 256

Professional Window Cleaner



All Types of windows cleaned
including Fly Screens, Window &
Door Frames Tracks and Runners

We can offer our customers Solar
Panel Cleaning (single story only)

Very Reliable • Free quotes

**Ring Mike on:
0406 467 026 or 02 4446 6684**



CALL US ON 0499 452 095

Culburra Beach

& Districts

Men's Shed

OPEN MON & WED MORNINGS

YOUR AD HERE

CBnews

Advertise Your Business With The **CBnews** Today!

Very Affordable Rates For All Businesses!

Contact the Editor for more info
editor@callalabaycommunityassociation.com.au

Callala Bay Community Association Report

The February CBCA Meeting proved to be a lively and interesting affair. Although the number of members attending were small, many matters were discussed.

Climate Change

The meeting approved the motion that: 'that this group write to urge Council to make a firm commitment to acting in emergency mode to address climate change issues, to reduce greenhouse gas emissions to net zero, and thereby to reduce the impacts of fire, flood, vegetation loss, and sea-level rise in the years ahead'.

Parking Congestion at the Boat Ramp and Vicinity

This matter, including the street parking in Boorawine Street continues to be an issue for residents, holiday makers and boat owners. If any reader has photographs or examples which could enhance the CBCA approach to Council to possibly alleviate and resolve this concern, please send them to suggestcbca@gmail.com.

Housing Development at Callala Bay

Most readers will be aware of the planned housing development of the land bordered by Scott and Emmett Streets and a portion of Callala Beach Road.

The following matters were identified:

- A draft plan will be published for comment during the year;
- A partial exhibition will be shown in Mar 21;
- Concerns were expressed relating to:
 - * Carriageway / road reserve width;
 - * Parking;
 - * Public transport;
 - * Vegetation in reserves;
 - * Storm water runoff to the south of Emmett Street; and
- There are approximately 370 blocks varying in size from 500 to 2000 square metres.

There is still a considerable amount of work yet to be completed and the CBCA will advise the Callala Community of progress.

Art Exhibition

An art exhibition by local artists is to be held at the Callala Community Centre on Sat, 3 Apr 21 (Easter Saturday). Please see the separate article in this Newsletter.

Control of Dogs

It was reported at the meeting of another dog-on-dog attack has recently occurred at the Callala Shops. Incidents of this type should be reported to Council. All dog walkers are reminded it is their responsibility to control their dog/s and dogs must be on a lead unless in an authorised 'dog off lead' area.

Overnight Camping.

If overnight camping in non-approved areas eg Bicentennial Park is observed, the Council should be advised.

Petition for the Beach to Bay Boardwalk

The meeting was advised over 1700 signatures had been obtained to promote the Beach to Bay Boardwalk Project. This an extremely important project for Callala from a safety viewpoint given the number of people who have been seen walking along Callala Beach Road to get from the Beach to the Bay and vice versa. It is strongly recommended the Council take note of the strong community support for this project and the CBCA seeks Council advice of the next steps.

Continues on Page 7



Callala Bay
Open 7 Days A Week
Market-Fresh Fruit and Vegetables
Lotto Newspaper ATM

Ph: 4446 4811

It Pays to Shop Independent

Located in Bayview Plaza, 55 Emmett Street, Callala Bay

How the locals like it™

jaykaymedia@icloud.com

0458 812 666



Graphic Designer

Logo Design, Banners, Flyers, Photo Restoration and Video Editing/Effects

The Callala Bay NEWS *proudly supports your local community by helping to fund projects that benefit all residents.*
Consider supporting us by subscribing for a small yearly fee.

Contact: editor@callalabaycommunityassociation.com.au

Callala Bay Community Association

Sheaffe Street Pathway

There have been many comments from visitors, holiday makers and resident of the risks undertaken when walking along Sheaffe Street. There is an increasing number of holiday stater in Callala and the lack of a defined walking path is deeply troubling. Any photographs, ideas or submissions to increase Council awareness of this issue would be appreciated.

Thanks to our Volunteers

Our thanks are directed to all our volunteers for their hard work to make Callala Bay a better place to be. They are those who pick up 'stuff' on the beach, our event organisers, committee people, doggy-bag changers and the myriad of the others who participate in our community. Thank you one and all.

Next Meeting

The next Meeting of the CBCA is to be held in the Callala Community Centre on Wed 10 Mar 21, commencing at 7:00PM. There will also be the Annual General Meeting at which all existing Committee positions will be declared vacant. If you would like to be heard on issues about Callala or you have some new ideas, please come along and participate. Please note, only financial members of the CBCA can vote at with the Annual General Meeting or General Meeting.

Short Term Holiday Rental (STR) overview

A new STR Act came into force last year with implementation being rolled out now.

A number of changes are aimed at strata titled complexes. In the main these are:

- Responsibility is put back on the guests;
- Sets out the rights and obligations of all participants;
- There is a platform for the resolution of disputes;

- The Act outlines the compliance and enforcement approach/process;
 - Requires all STR to register by 1 Jun 21 (accessible online);
 - There will be exclusion registers for guests, hosts and premises (accessible online);
 - There are increased obligations on booking platforms, hosts and agents;
 - Car parking compliance is a council/traffic responsibility;
 - An STR is a permitted use of the land and
 - Important to build relationship with owners & agents to manage issues early on.
- These a few of the responsibilities in the Act. It is highly recommended all owners / participants read and understand the new STR Act.

Articles for the Callala Bay Newsletter

Do you have an item of interest for the Community? Is it a recipe, a story, some historical facts or perhaps a travelogue? Perhaps it is about your darts match or a sporting event. A reminder that we invite all sporting groups, clubs, and associations to submit articles and results for the newsletter. Send them to editor@callalabaycommitee.com by the 20th of each month for inclusion in the next month's Newsletter.



*The Callala Bay News Publication
is proudly funded by the Callala Bay
Community Association with the help of
our local business sponsors*

Capital Country Electrical trading as

Chilko Electrical

Licence number: 214627C

Electrical requirements to:

Domestic - Commercial - Rural - Industrial Installations - Telephone Installations

INSTALLATION, MAINTENANCE & REPAIR

Phone: 0419 405 797 Email: chilcoelec@outlook.com

www.chilcoelectrical.com.au

CULBURRA BEACH



4447 3838

Ages 2 to 5 years

Sunshine Street

EXTENDED HOURS 8AM TO 6PM

www.cbpreschool.com.au

- University & Diploma Trained Staff
- Personalised School Readiness & Preschool Program
- Smart Phone App for Parent Communication
- Child Care Subsidy Available with Fees starting from \$14.40 per day
- Open 48 weeks of the year - Visits Welcome

On Your Side.

I am your representative in the Australian Parliament. I can help with issues like Medicare, Centrelink, aged care and pensions, the NDIS, Veterans' Affairs and community grants.

I can also arrange special birthday and anniversary messages, and information for pensioners and seniors. You can contact me on 4423 1782.

Fiona Phillips



FIONA PHILLIPS MP

FEDERAL MEMBER FOR GILMORE

☎ (02) 4423 1782

📍 3/59 Junction Street Nowra NSW 2541

📍 1/6-8 Orient Street Batemans Bay NSW 2536

✉ Fiona.Phillips.MP@aph.gov.au

📘 Fiona Phillips MP 📱 @fiboydphillips

🌐 FIONAPHILLIPS.COM.AU

ADVERTISEMENT



Authorised by Fiona Phillips, ALP, 3/59 Junction Street Nowra

Community Church

Whilst attempting to remove some weeds and tidy up our yard I reflected on the behaviour of weeds. For those green thumb gardeners, I will confess that I am no gardener, so this is the reflection of a complete novice, never-the-less it is what I've experienced.

Good lawns and gardens seem to grow only when they are planted in well prepared soil, watered regularly and fed with fertilizer; whilst weeds seem to grow anywhere. An example was our lawn, as the grass dried out (due to lack of attention) the weeds sprang up. Weeds would take root in the most inhospitable places, and before long would be flowering and spreading seeds all over the place. I also found that to remove certain types of weeds, you had to dig them out, a painstaking and time-consuming job.

On a positive note, I have found that once established and maintained our lawn had an almost complete absence of weeds, a few runners a little soil over the top, in some of the bare patches, then well-watered and before long a lovely carpet of lawn, (at least by my standard). Finally, once established, both lawn and garden with continued care it is much easier to control the weeds and can be enjoyed by all.

As I reflected on my experience with weeds and gardens, I also was able to look at what I might call weeds in my personality, those parts of me that are toxic to me and my relationships with God, my family and others I contact throughout each day.

Now my desire is to be a person that brings hope, beauty and life to all that I come in contact with; I seek to know how I might do this well. How might I (and perhaps others) get rid of those weeds in my personality and become someone who brings peace and joy?

Jesus says; "he came that we might have life and have it in all its fullness"! What are some ways

this might happen?

Paul writing to the Christian church in Philippi has this to say: "Summing it all up, friends, I'd say you'll do best by filling your minds and meditating on things true, noble, reputable, authentic, compelling, gracious—the best, not the worst; the beautiful, not the ugly; things to praise, not things to curse. Put into practice what you learned from me, what you heard and saw and realized. Do that, and God, who makes everything work together, will work you into his most excellent harmonies" (The Message).

In other words, just like our gardens needing care and good fertilizer our minds respond most positively to feeding on good things. What we take in will determine what comes out.

Recognizing what is wrong with the world we live in is easy, having the mindset that sees beauty in our world and in people, this is more difficult. Rather than seeing the glass neither half full nor half empty, but being grateful that it contains that which might refresh both body and soul.

Trusting that our readers are keeping well – God bless.

Kevin Kettlewell (Pastor Callala Christian Community Church) Mob. 0437338739



*The Callala Bay News Publication
is proudly funded by the Callala Bay
Community Association with the help of
our local business sponsors*

YOUR AD HERE

Advertise Your Business With The **CBnews** Today!

Very Affordable Rates For All Businesses!

Contact the Editor for more info

editor@callalabaycommunityassociation.com



OUR COUNCILLORS

Shoalhaven City Councillors welcome comments and information from the general public. They can be contacted on the numbers and email addresses below.
For general enquiries phone **4429 3111**
shoalhaven.nsw.gov.au

MAYOR
Clr Amanda Findley

M: 0434 151 730

amanda.findley@shoalhaven.nsw.gov.au



WARD ONE

Clr Annette Alldrick

M: 0428 657 026

annette.alldrick@shoalhaven.nsw.gov.au



Clr Nina Cheyne

M: 0428 629 147

nina.cheyne@shoalhaven.nsw.gov.au



Clr Andrew Guile

M: 0412 287 706

andrew.guile@shoalhaven.nsw.gov.au



Clr John Wells

M: 0412 676 159

john.wells@shoalhaven.nsw.gov.au



WARD TWO

Clr Joanna Gash

M: 0427 160 170

jo.gash@shoalhaven.nsw.gov.au



Clr John Levett

M: 0418 469 094

john.levett@shoalhaven.nsw.gov.au



Clr Mitchell Pakes

M: 0432 557 516

mitchell.pakes@shoalhaven.nsw.gov.au



Clr Greg Watson

M: 0412 210 979

watsong@shoalhaven.nsw.gov.au



WARD THREE

Clr Kaye Gartner

M: 0428 861 092

kaye.gartner@shoalhaven.nsw.gov.au



Clr Mark Kitchener

- Deputy Mayor

M: 0478 882 649

mark.kitchener@shoalhaven.nsw.gov.au



Clr Bob Proudfoot

M: 0428 970 086

bob.proudfoot@shoalhaven.nsw.gov.au



Clr Patricia White

- Assistant Deputy Mayor

M: 0447 416 329

patricia.white@shoalhaven.nsw.gov.au



JT

SOLICITORS

JOHNSTON TOBIN

Solicitors

4421 5344

For all your Legal and Conveyancing needs

Criminal Law • Family Law • Wills & Estates • Property Matters
Conveyancing • Commercial Law • Litigation • All Court Matters

74 Berry Street, Nowra NSW 2541

Bushcare Report

Two locals recently seen checking out our Bush Care site at the end of Lackersteen St.



Have you noticed these lilies flowering in abundance along the main roads, vacant blocks and in the bush recently?



It is 'Lilium formosanum' commonly known as Formosa Lily. You can tell from how densely these lilies grow when they escape from domestic gardens, that it's a weed, and an environmental menace. I'm normally rather lax at before and after assessments of our Bush Care sites. However, after a local couple alerted me to a large amount of Formosa Lily growing next to one of our beach access tracks, I decided to be systematic. In an area measuring approximately 20 metres x 20 metres, I removed 72 Formosa Lily plants, many of them in flower!

I know my acquaintances who alerted me to that patch of weeds, thought they were doing the right thing; they had removed a number of the plants by pulling the stems out of the ground. Unfortunately this strategy is not particularly helpful, but I have to admit this was my strategy when first started tackling this weed nearly a decade ago. Although this may involve removing the flower head and the seeds it contains, it leaves a bundle of what are botanically called scales underground. This bundle of scales looks rather like a garlic bulb and when left underground, this will send up a new shoot/plant in late spring or early summer. Meanwhile the seeds contained in the flower have fibrous 'wings' attached and will be germinating nearby – that's why you see so many of them growing in close proximity.

If you are aware of Formosa Lily growing on public land, please advise our group. I can be contacted using my phone number at the end of the column. This lily can be eradicated from bushland using a management strategy where the stems are cut close to the ground and a droplet of herbicide put on the stem. This will kill the remnant of the stem plus the bundle of scales in the ground below.

I promised to report this month on my efforts to reduce the prevalence and spread of the lawn weed, *Richardia* in and around the entrances to Boorawine Creek reserve. My success has been mixed. I have limited the spread of this weed and eradicated it for this season in some places. However looking over the areas where *Richardia* continues to spread, I can see that I need to concentrate on areas where there is greatest foot traffic as this is how the weed spreads. So perhaps I'll class my success as two steps forward, one step back.

Continues on Page 13

YOUR AD HERE

Advertise Your Business With The **CBnews** Today!

Very Affordable Rates For All Businesses!

Contact the Editor for more info
editor@callalabaycommunityassociation.com

Advertisement

Shelley Hancock MP

Member for South Coast



**“If I can assist with any State Government Matter
please contact my office”**

Email: southcoast@parliament.nsw.gov.au

Phone: (02) 4421 0222

1/57 Plunkett Street, Nowra, NSW 2541



Authorised by Shelley Hancock MP, 1/57 Plunkett Street, Nowra, NSW, 2541



The Point Gallery Craft

76B Greenwell Point Road Greenwell Point NSW 2540

**Extensive Art and Craft Made in the Shoalhaven
Exhibition space available on a calendar month basis
Tourism Ambassador for the Shoalhaven**

**Normal opening hours 10am-4pm Friday – Monday
COVID Hours 11-3 Friday, Saturday & Sunday**

For further information

Contact: 0400998610 or 0418249148

Bushcare

When I went back and treated an area that had heavy foot traffic during the tourist season, I found tell-tale rabbit faeces pellets next to the weed. I had been thinking it was human feet that spread the seeds, but in that area, near the beach, it's those pesky rabbits!

If you would like to become involved with our Callala Bush Care group, please email our Council Co Ordinator Peter Swanson, Peter.Swanson@shoalhaven.nsw.gov.au, and he will put you in contact with our group leader, Bryan Lenne. Any queries about information or opinions in this column, my phone number is 0419 531 902.

Garden Club

Our first meeting of the year resumed with eased COVID restrictions. After the Christmas break it was great to catch up with members again and to see everyone in a much happier state of mind. President Bev welcomed members and guest speaker Elizabeth Taylor, owner of gift shop and studio ARTORIGINAL in Culburra.

Elizabeth is an Indigenous artist from the Yuin tribe. She opened her shop in November last year selling jewellery with native flowers set in resin, baskets which she weaved from raffia, candles with native fragrances and soap with lavender and lemon myrtle. She also sells lip balms which have healing properties. Elizabeth's philosophy is that we should all be about Australia, buying locally and paying attention to Mother Nature. Elizabeth conducts workshops where her motto is "art needs to be fun" while including more structured activities. Elizabeth also runs small workshops with the NDIS to promote simple art methods. It was lovely to meet Elizabeth and we wish her success in her business. If you would like to visit her studio it's situated in Shop 5/2 Weston St, Culburra

Beach. It was great having the display table once again. Theme for February was a summer flower in a bottle. The bottles were diverse, and every flower was unique. One of the loveliest was an orchid brought in by member Sue Tracey. This is a yellow oncidium orchid sold simply as "Dancing Lady." These are generally large plants, with long and abundant leaves. They flower in late summer or early autumn, with dozens of blooms on multiple stems that can last for months. They're dormant in the early summer as they prepare to bloom again.



On Behalf of our club, I want to congratulate fellow member Robyn Hannan for winning a Shoalhaven Australia Day 2021 award. Robyn won for Outstanding Contribution to the Environment. Her vision, dedication and hard work led to the establishment of the Callala Community Garden.

Take care everyone and stay safe. Go and enjoy your garden! Meetings are held 3rd Saturday of each month from Feb – Nov at the Banksia Hall Culburra Beach Community Centre (IRT driveway) 1.30 pm. Visitors are most welcome for afternoon tea please bring your own cup/ mug.

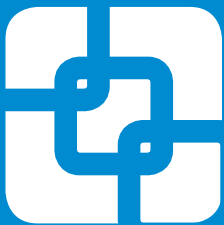
Doris Carpenter (secretary) 44465631

Get tested for COVID-19 if you have **cough, sore/scratchy throat, shortness of breath** or **fever**.

Self-isolate until you get your test result.



For more information Call 1800 020 080 National Coronavirus Helpline



Pottenger & McGhee Solicitors
Nowra & Huskisson

Conveyancing | Wills & Estates | Business Law | Leases

We look forward to meeting you and helping
you with your legal needs.

Level 1, 25 Kinghorne Street, Nowra Phone 02 4421 6166
Level 1, 64-66 Owen Street, Huskisson Phone 02 4441 7973
Email: pbetts@potmac.com.au

If you can't come to us, we can come to you!

Callala Bay Outdoor Gym

The Callala Bay Outdoor Gym Project

As many of you will be aware the CBCA Project Team is investigating the possibility of putting together a series of exercise stations in the vicinity of Marine Parade for community use. Two quotations have been obtained from Australian firms and a grant for the project is being compiled.

The Grant Application must be submitted by 21 Feb 21. Council has been very supportive, and a deal of the administrative work has been ably completed by Council Staff. The CBCA will advise the Callala Community of progress on the grant and the winning tender as soon as the information is available.

Callala Community Centre

The Callala Community Centre is open for business!

We are pleased to welcome back our regular hirers. There are some rules for hall users to follow

- If you feel unwell or have cold and flu-like symptoms you must stay home and may not enter this facility.
- Please bring soap and cleaning equipment with you, including detergent, cloth and bucket (consider if you will need a cup to gather water from small basins).
Clean all surfaces before and after your event with detergent.
- Pay particular attention to high-usage surfaces in the amenities, doorways and kitchens table and chairs
- Practice physical distancing and keep a minimum of 1.5m away from others as much as possible and observe the 4 square mtrs requirement
- Wash and/or sanitise your hands thoroughly

for at least 20 seconds with soap and water, or use alcohol-based hand rub.

(The Hall Committee have provided hand sanitizer and cleaning solutions)

- Cover your nose and mouth when you cough or sneeze with a tissue or flexed elbow.
- Take all rubbish with you.
- Please ensure you also maintain physical distancing immediately outside the facility.
- Complete the attendance register and leave in the manila folder in the kitchen

Friends of Callala

New to the area or interested in making new friends and getting out of the house?

Friends of Callala is a friendship group for retirees male & female. It has been running for a number of years, is supported by Shoalhaven City Council and we are members of the Combined Pensioners and Superannuants Assoc.

We meet each Monday at 12 at the Callala Community Centre, bring along sandwich and for a small fee we provide tea/coffee and dessert. Now that we are returning to the 'new normal' and soon to have covid vaccinations available we hope to resume our regular lunches at cafes around the Shoalhaven.

For further information ring Margaret on 44466535



*The Callala Bay News Publication
is proudly funded by the Callala Bay
Community Association with the help of
our local business sponsors*

Callala Community Church

... A Jesus centred Church ...

Looking for something different?

*Perhaps somewhere you can ask
those difficult questions!*

The Community church will be meeting in homes
beginning in October.

Please give us a call and see if there is a group that you might
like to connect with.

As part of your community let us know if we can help in any
way.

Phone Pastor Kevin– 0437338739 or follow us on fb

FREE

Pre-Loved Clothing & Book Stall

First Saturday of the Month
at the

Callala Community Centre

9.30am to 12.00 NOON

Clothes in good condition can be dropped off at the stall
(on the day only). If clothing can be delivered by 10am;
this will allow them to be displayed.

Callala Community Garden

It's official! Fiona Phillips MP, Federal Member for Gilmore planted an elderberry tree as our Opening Ceremony.



This was held at the garden on 26th February. A members social BYO BBQ is planned for 5th March at 4.30 p.m.

New opening times are being tried from Tuesday to Friday and 1st and 3rd Sundays from 8.30 a.m.

Morning tea is available at 10.00 a.m. if you just fancy a look around and a cuppa. All welcome. The garden will be open during market morning which is the second Saturday of every month from 8.00 a.m. Drop in for produce and so much more.

Members have been busy bees. Lots of planting, mulching, watering, harvesting and composting. Our men have been working on a compost bay and garden bed building project.

The sensory garden is looking even more inviting for young and old to play in.





*The Callala Bay News Publication
is proudly funded by the Callala Bay
Community Association with the help of
our local business sponsors*

Want to help support this
publication?

Become a member of the Callala
Bay Community Association to
do just that.

Email: admin@
callalabaycommunityassociation.
com

Peter Rose EyeQ Optometrists

Visit eyeq.com.au for convenient online bookings

59 Kinghorne Street, Nowra
4421 4511



Peter Rose



Robert Rose



ABN: 40 132 674 769

LEAVES AWAY PTY LTD trading as

SHOALHAVEN GUTTER CLEANING

COMMERICAL & RESIDENTIAL

FULLY TRAINED

FULLY INSURED

0490 083 275

reliability, quality, value

shoalhavenguttercleaning@gmail.com



Boomerang Bags

As Boomerang Bags ventures into 2021 it is great to reflect on where we started.

We launched supplying bags at the local shopping Centre in November 2017 with a total of 600 bags. Who could possibly have imagined that our amazing BB Family would have made and distributed just over 6000 bags in the past 3 years!

While our focus has always been on reducing the dreaded plastic, we have found the bonus has been the many wonderful friendships and collaborations that have resulted from this group. When someone or a community group needs a hand the BB family are always ready to assist with smiling faces.

So, as we meet for our first 2021 session is there anything that we can do differently? Would a different design of bag work? How many bags do you think we will make this year?

We would like to thank the local community for helping us to replace and hopefully eradicate the plastic bags, please remember to take a reusable bag when you go shopping, in particular please do not leave plastic bags at our waterways.

We start our regular sewing day on Wednesday 17th February at 9.30am, our sewing days are held at the Callala Beach Community hall on Quay Road. BYO lunch with Tea and Coffee provided, we look forward to meeting you.

If you would like any more information, please contact Kay on 0412 691 833

Easter Art Exhibition & Sale

On Easter Saturday, 3 April 2021, an Art Exhibition and Sale will be held at the Callala Community Centre (across from the shops on Emmett Street, Callala Bay) starting at 10am.

The Rural Fire Brigade will offer a breakfast for those attending and the church will also be

holding their regular clothing stall.

There will be a well-priced assortment of work available to the discerning public. Landscapes, seascapes, florals, animals and abstracts in oils, acrylics, watercolour and pen and ink, all ready to hang. The artists will be on hand to answer questions and demonstrations in oils and acrylic will also take place.

This Art Show is being held to promote the work of artists and hopes to bring a little bit of enjoyment to our wonderful community.

Australia Day 2021

The Annual Australia Day gathering for the Callala District was again held at Bicentennial Park. There was a deal of doubt, caused in the main by our constant friend COVID 19, but patience and a degree of 'stuff it, let's do it' prevailed and the day was met by warm and sunny weather.

The event was sponsored by the Shoalhaven City Council and the Callala Bay Community Association and supported by the Callala Rural Fire Brigade who dazzled the gathering with their culinary expertise.

The egg and bacon rolls were a pleasure on the taste buds and the sausage 'sanger' was the conclusion to a great breakfast, to me at least.

Over 270 people attended the breakfast in a Covid Safe environment and Councillor Greg Watson, representing the Mayor and Jake Khourey, representing Fiona Phillips, MP were in attendance.

Continues on Page 21

Route 120

Currarong, Callala Bay, Callala Beach, Myola to Nowra and Bomaderry



Departs	School Days		Monday to Friday		School Holidays		
	AM		AM	PM	AM	AM	PM
Currarong							
Crookhaven Pde	7.15 T		8.25 T		8.00		
Yalwal St	7.16 T		8.26 T		8.01		
Tennis Court	7.17 T		8.27 T		8.02		
Progress Hall	7.18 T		8.28 T		8.03		
Cambe & Nowra Rds	7.20 T		8.30 T		8.05		
Callala Bay							
Sydney Ave	7.35 T		8.47	10.10	8.20	10.10	1.45
Boorawine Terrace	7.30 T		8.40	10.13	8.23	10.13	1.48
Emmett Street Shops	7.30 T		8.46	10.16	8.26	10.16	1.53
Callala Public School	7.35 T		8.45	10.17	8.27	10.17	1.54
Callala Beach / Myola							
Queen Mary Street	7.15 T		8.15	10.20	8.31	10.20	1.58
Catherine St Myola	7.20 T		8.20	N/A	8.36	N/A	N/A
Sir Henry Crescent	7.22 T		8.23	10.23	8.40	10.23	2.02
Callala Beach Shops	7.25 T		8.25	10.25	8.42	10.25	2.04
Watts and Lennox St	7.27 T		8.28	10.28	8.45	10.28	2.07
Mayfield	7.40 T						
Stewart Place Nowra	8.20		9.20	11.00 #	9.20	11.00 #	2.55
Bomaderry Rail	8.15		9.30	11.10 #	9.30	11.10 #	2.40
Nowra Tafe	8.20		9.32				
Stocklands Nowra			9.40	#	9.40	#	2.50
Train Departs Weekdays	8.17 & 9.20		10.00*	11.23 & 12.00pm*	9.20 & 10.00*	11.23 & 12.00pm*	16.12
Train Departs Saturdays					10.31		16.33

* Bus Service 737 Bomaderry Station to Kiama Station
T Transfer at Shoalhaven High School for Nowra and Bomaderry

Drops only as Required.

SERVICES DO NOT OPERATE SUNDAYS AND PUBLIC HOLIDAYS
T Transfer at Callala School for Nowra and Bomaderry

Route 120

Nowra and Bomaderry to Callala Beach, Myola, Callala Bay and Currarong



Departs	Monday to Friday		Monday to Friday		School Days		School Holidays	
	AM		PM	PM	AM	AM	PM	PM
Train Arrives Weekdays	8.40* & 9.15		11.40* am & 12.27	1.40* & 2.17		8.40* & 9.15	11.40* am & 12.27	1.40* & 2.17
Train Arrives Saturdays						8.19	12.21	2.19
Stewart Place Nowra	9.20		12.20	2.55		9.20	12.20	2.55
Bomaderry Rail	9.30		12.32	2.40		9.30	12.32	2.40
Nowra Tafe	9.32		12.34		3.30 S473	9.32		
Stocklands Nowra	9.40		12.40	2.50		9.40	12.40	2.50
Mayfield					3.55			
Callala Bay					S473			
Callala School	10.17			3.35	4.11	10.17		
Sydney Ave	10.10			3.43	4.05	10.10		
Boorawine Terrace	10.13			3.40	4.08	10.13		
Emmett Street Shops	10.16			3.35	4.10	10.16		
Callala Beach					S473			
Queen Mary Street	10.20			3.46 T	4.22	10.20		
Catherine Street Myola	N/A			3.51 T	4.27	N/A		
Sir Henry Crescent	10.23			3.55 T	4.30	10.23		
Callala Beach Shops	10.25			3.45 T	4.21	10.25		
Watts, Lennox Road Loop	10.28			3.42 T	4.18	10.28		
Currarong								
Cambe & Nowra Rds				3.50 T	4.20 T			
Progress Hall				3.53 T	4.23 T			
Tennis Court				3.55 T	4.24 T			
Yalwal St				3.57 T	4.25 T			
Crookhaven Pde				4.00 T	4.26 T			

* Bus Service 737 Kiama Station to Bomaderry Station.
T Transfer at Callala Bay for Callala Beach, Myola and Currarong.

Drops as Required.
T Transfer at Callala Bay for Currarong.

SERVICES DO NOT OPERATE SUNDAYS AND PUBLIC HOLIDAYS.
S473 Bus for Callala Bay, Callala Beach, Myola and Currarong.

YOUR AD HERE

Advertise Your Business With The CBnews Today!

Very Affordable Rates For All Businesses!

Contact the Editor for more info

editor@callalabaycommunityassociation.com

Australia Day 2021

The morning's entertainment was provided by Kenny on guitar and Amanda on tambourine who had many a person singing along, while the magic was dispensed by 'magic Daniel' who seemingly is able to play the pied piper to a number of children and keep them amused and wide-eyed.

The Coffee was well made by bumpy Road and there was a steady queue for this excellent caffeine fix.

This activity does not happen on its own and the Community thanks Jim Townshend, Joe Kowal, John Fowler and Howard Duncan for their assistance in the advertising, setting up and removal of signs, tent, and venue preparation to accord with the Covid Safety requirement.

To all those who attended, and the support staff who assisted it was an excellent morning of Community spirit. Thank you!



YOUR AD HERE

Advertise Your Business With
The **CBnews** Today!

Contact the Editor for more info

editor@callalabaycommunityassociation.com



Callala Gallery

15 Callala Beach Road, Callala Beach

Art Classes

From beginners to advanced, for adults and children.

In: Acrylic, Oils, Watercolours, drawings and mixed media

School Holiday Workshops

Phone: **0407456770 or 4446 5770.**

Email: roslyn.chatham@bigpond.com

All Artworks on display at the Gallery are For Sale.

Paintings done on commission.

Callala Gallery on Facebook

www.artclassesnowra.com

Crookhaven Mechanical Repairs



4447 5845



FREE Pick - Up Callala - Bay - Beach - Myola

We Can Service Your NEW Car AND Protect YOUR Warranty

Major Trip Prep - Suspension Upgrades - Bullbars - Accessories



ARC-AU21881 crookhavenmechanical.com.au MVRLic35947

ARMSTRONG

CONTRACTING PTY LTD

SINCE

1985



CONTACT
Robert Daniels
0414 011 089

Ph.4446 6632

Specialising in

WATERPROOFING

- BATHROOMS
- BALCONIES
- PLANTER BOXES
- ROOFING

JOINT SEALING

- FIRE RATED
- PANEL JOINTS
- SAW CUTS
- FLOOR JOINTS

WATERPROOFING LIC.NO. 163162C

MASTER BUILDERS ASSOCIATION
MEMBERSHIP NO. 18491909



Membership Application Form - 2021

Members Name(s)

.....
.....

Your Callala Address:.....

Email Address:.....

Preferred Contact #:

Would you prefer your edition of Callala Bay News, either:- (please nominate your preference)

Delivered to your Callala address: ☐

Emailed: ☐

Self-access from <https://www.callalabaycommunityassociation.com/>: ☐

Signed:

Date:



Yearly Membership [January – December] \$5.00 per couple, per household where both members are pensioners

Cheque Payments

Attention: The Secretary
P.O Box 14
Callala Bay NSW 2540

Direct Deposit

(Please include your Surname for identification)
Account: Callala Bay Community Association Inc.
BSB: 633 000
Account #: 141 737 692



*Where the
Beach & Bay
come to play!*

GOLF COURSE

Open Everyday (02) 4446 5313 opt 2
Information & bookings
callalagolf@outlook.com
Extensive TAB facilities

FRIDAY

Fitness Exercise
Class from 10:30am



TUESDAY

\$17 T-BONE Night.
HAPPY HOUR from 4 – 6pm.

WEDNESDAY

\$15 Chicken Schnitty Night.

RAFFLES

THURSDAY

Bowlers Extensive Raffle from 6pm
with great prizes.
Members Badge Draw!

FRIDAY

Meat Mart Best value Friday night in
town - Meat Tray prizes valued @
over \$1,000 – Tickets on sale 6pm
Draw commences approx 7pm

SATURDAY

Fisho's Raffle from 12 noon to 1:30pm

SUNDAY

Meat & Seafood Raffle - Tickets 4pm - Drawn 5pm
Members Badge Draw!
Fisho's Weigh In – 2pm 4th Sunday each month.



**Members
Badge Draw
EVERY
THURSDAY
& SUNDAY**

+ BONUS DRAW LAST SATURDAY EACH MONTH

MONDAY - Close @ 7pm TUESDAY

Free Trivia – 6:30pm Start.

WEDNESDAY

NPL Poker – \$12 Entry -
Includes 2 Lifelines - 7pm start.
All games are sit & go – 10 per sit & go.

THURSDAY

Bingo – Eyes down at 11am

SUNDAY

Members Happy Hour
3pm to 4pm

BOWLS

Monday- Indoor 12 noon

Tuesday – Women's Bowls from 9:30am

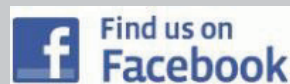
Wednesday – Men's/Mixed Social Bowls.
Names in by 12:30pm for 1pm start.

Every day – Barefoot Bowls
\$10 per person – Everything supplied.
Kids 12 & under play for free.



Phone: 02 4446 5313
43 Callala Beach Road, Callala Beach

www.clubcallala.com.au



Community Church

Are there times in our lives when we seem to be getting nowhere despite our best efforts? I confess that this has been my experience more than once. Perhaps what makes the difference is where we start. When our identity is found in our achievements, or the type of job we do, or, the suburb we live in, or, even the type of car we drive; failure to achieve any of these may result in more effort or a sense that we have failed. There is nothing wrong with any of these things, although I might question; is this really what we are seeking? Is that all that our life amounts to? Are we seeking something outside ourselves to fill some void we sense requires filling?

Perhaps what we all seek is to belong; to sense connection with another; to be in a relationship! Or, maybe we all seek to be loved and be valued for who we are rather than what we've got. Perhaps our experience of church, (the one place I would trust we would be valued for who we are), we have found judgement and felt that we just don't fit.

I am extremely sorry if that has been your experience, although I don't believe that is what God intends. Here are some statements of what God says to us:

God understands our sorrows: "You keep track of all my sorrows. You have collected all my tears in your bottle. You have recorded each one in your book" (Psalm 56: 8).

God accepts us just as we are: "Dishonest tax collectors and other notorious sinners often came to listen to Jesus' sermons; but this caused complaints from the Jewish religious leaders and the experts on Jewish law because he was associating with such despicable people—even eating with them!" (Luke 15: 1-2). This was the prelude to the well-known parable – "The prodigal son". God call us into a relationship with him, hear Jesus' words; "Are you tired? Worn out? Burned

out on religion? Come to me. Get away with me and you'll recover your life. I'll show you how to take a real rest. Walk with me and work with me—watch how I do it. Learn the unforced rhythms of grace. I won't lay anything heavy or ill-fitting on you. Keep company with me and you'll learn to live freely and lightly." (Matthew 11: 28-30 the message).

And finally, God doesn't want any to perish: "He isn't really being slow about his promised return, even though it sometimes seems that way. But he is waiting, for the good reason that he is not willing that any should perish, and he is giving more time for sinners to repent (2 Peter 3: 9).

When our starting point is being accepted by God, it then frees us up to love others – even those who we previously found difficult to love. Secure in the knowledge of God's love for us we are free to be better parents, better husbands and wives and better friends. Surely this would make for a better world!

Kevin Kettlewell (Pastor Callala Community Church. Mob. 0437338739).



*The Callala Bay News Publication
is proudly funded by the Callala Bay
Community Association with the help of
our local business sponsors*

WHAT'S ON @ THE PROGRESS HALL

MONDAY	4:00PM - 6:45PM	JENNY'S DANCE	PAMELA	0433 675 820
TUESDAY	10:00AM – 12:00PM	CRAFT	YVONNE FOWLER	4446 6380
TUESDAY	2.30PM – 4.30PM	FOLK DANCING	MAUREEN PETHERICK	4446 6550
THURSDAY	9:30AM	YOGA	ANNA SMALLWOOD	0405 102 234
BEGINNERS WELCOME – MATS SUPPLIED WWW.ROAMINGYOGIS.COM.AU				
FRIDAY	3.30PM – 5PM	TENNIS LESSONS	GARRY O'CONNOR	4464 1418 OR 0412 068 116
SATURDAY	8.00AM	TAI CHI	JOHN GRAHAM	0428 564 738
ALL LEVELS				

Tennis court bookings can be made at Callala & Culburra First National – 58 Boorawine Terrace, Callala Bay or call on 4446 4313. Please make your booking during office hours so that the keys can be made available (available in daylight hours only).

THE HALL IS ALSO AVAILABLE FOR FUNCTION BOOKINGS INCLUDING WEDDINGS, BIRTHDAYS, BABY

Anglican Churches

of Culburra Beach | Callala | Currarong

Callala - Church Service - 5pm Sunday

All Welcome | Kids Church

St Marks, 2 Hunter Street, CALLALA BAY

Caterpillar's Play Group - 9:30am Friday @ Culburra Beach Anglican

Kids Club - 3-4:30pm Friday @ Callala Anglican

289 (Youth) - 5-7pm Friday @ Callala Anglican

For more information: Rev. Paul McPhail

m. 0414 616 860 e. culburra.anglican@gmail.com

www.culburraanglican.org.au

CALLALA COMMUNITY CENTRE

Emmett St Callala Bay. A fully equipped kitchen, An elevated stage and sound system, Off street parking

Catering and seating for 120 people, Flexible hire times and reasonable rates

What's On Regularly at the Centre:

Monday - Friday (school times) OOSH By Katie for OOSH times call Katie **0419 917 793**

Monday Friends of Callala - over 50's social group - new members always welcome

12-2.30pm

Tuesday Mat Pilates: Call Erin **0434 419 694**

6:00pm

Second Wednesday of the month: Callala Bay Community Association

7:00 pm

First Saturday of each month: Callala Community Church Pre-Loved Clothing stall

9.30am-12pm

Second Saturday of each month: Callala Markets - Call Sandra 0413 581 419

8am-1pm

For all bookings and enquiries call Jane: **0408 521 520**

March 2021

What's On @



Saturday 6th

JACII LEIGH – from 7pm.

Saturday 13th

BENN ALLEN – from 7pm.

Saturday 20th

DAN MIRANDA – from 7pm.

Saturday 27th

KYM DEVILLE – from 6pm.

MAJOR PRIZE – MEGA MEAT RAFFLE – Tickets on sale 6:30pm to 7pm.

2ND CHANCE DRAW – 5 x 10,000 points to be Won! (Worth \$100 each).

BONUS BADGE DRAW – 1 Number – 1 Chance to Win! – Drawn 7:20pm.



LUNCH – 12 noon to 2:30pm (7 Days)

DINNER – from 5pm (Tuesday to Sunday)

Bookings on 4446 5313 Option 4

Courtesy Bus available 7 Days. Call 4446 5313 option 1 for bookings.

Monday to Saturday from 4pm & Sundays from 3:30pm.

CULBURRA & DISTRICT COMMUNITY HEALTH SERVICE

We maintain the Op Shop, Ambulance
Station, Medical Centre and the Medical Bus.

Culburra Pharmacy on **4447 2382** for
medical bus
(travel is by donation)

Volunteer's Bus drivers phone neil on
4447 4713

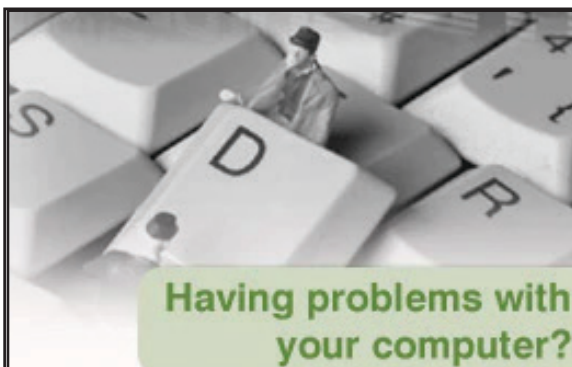
Volunteer's op shop workers phone
Jeanette **4447 5075**

YOUR AD HERE

Advertise Your Business With
The **CBnews** Today!

Contact the Editor for more info

editor@callalabaycommunityassociation.com



Hayton.Biz IT

Local computer
support & service.

Onsite IT & computer support for business and home
users.

Experienced technicians, same day service, No call out
charge for the local area* & competitive rates.
Laptop repairs/servicing also undertaken.

- Computer repairs
- General PC report
- Computer servicing
- General PC advice
- Internet problems
- Email setup
- Virus/malware removal
- Network configuration
- Domain registration
- Server installation
- Server support
- Backup configuration

(02) 4423 3857

Call
Today



GP JAMES CLEANING SERVICES

The Royal Treatment

Fast Reliable & Trustworthy

*Specialist in Holiday home cleaning

* Linen Hire and Laundry Service

*Domestic and Office Cleans

Bond and Rental Cleans

Fully Insured



0402576859 0244465000 gpjamescleaning@gmail.com

Culburra Beach & Districts Men's Shed

We all like to see colourful parrots or quirky kookaburras in our backyards. Nocturnal visitors like brush-tail and ringtail possums can be equally entertaining. But have you ever thought of some of the lesser known birds native to our area?

Owlet-nightjars

The Australian Owlet-nightjar is the smallest of our nocturnal birds. Its large brown eyes are non-reflective when exposed to a torch or spotlight (other nocturnal birds give a red reflection).

During the day they roost in hollow branches and tree trunks. The birds form permanent bonds, and pairs occupy the same territory throughout the year.

They feed at night on a variety of insects and will readily take flying prey, or pounce on prey on the ground or in trees.

Australian Owlet-nightjars raise one brood of 1-3 chicks per season in a suitable tree hollow or rock crevice.



White Throated Tree Creeper

The White-throated Treecreeper is usually seen foraging with great agility, spiralling up the trunks and larger branches of eucalypts, especially those with rough bark.

It is a dark brown bird, with a distinctive white throat and chest, and white streaks on its flanks, edged with black. They feed mainly on ants, but will eat other invertebrates as well as nectar. White-throated Treecreepers build their nest in a tree cavity, which is lined with bark, fur and hair and may raise two broods of 2-3 chicks per season.



Grey Shrike-thrush

The Grey Shrike-thrush is a rather drab grey coloured bird, but it is renowned for its beautiful song.

They search for food on the ground, generally around fallen logs, and on the limbs and trunks of trees, with a varied diet of insects, spiders, small mammals, frogs and lizards.

Their nest is an exposed cup-shaped structure of dried vegetation in a tree canopy, but they often locate their nest inside a tree hollow if there are nearby predators. They can raise up to 3 broods of 1-3 chicks per season.





Vinnies

CALLALA BAY SHOP

- **High quality second-hand items**
- **Clothing, bric-a-brac, books, linen, beach towels, toys, games, DVDs, jewellery and much more!**

VOLUNTEERS NEEDED

**YOUR TIME IS THE MOST VALUABLE
GIFT YOU CAN GIVE.**

For details of how you can help,
visit www.vinnies.org.au or pop into the shop
for an application pack.

Find us at: **59 Emmett St, Callala Bay**

Opening hours: **Monday to Friday – 8.30am to 4pm,**
Saturdays – 8.30am to 2pm (during summer/peak times only)

We welcome donations of non-bulky items during opening hours. For pickups, please call 4421 7244.

Callala Golf Club

The visitors are still here enjoying our beautiful area and making the most of the summer season and we are happy to have them come and play on our own beautiful golf course and enjoy the game and of course all the wildlife that come out to greet them during their game.

Kangaroos, ducks, water hens and other animals and birds that have made their home here are a continual delight even though sometimes it is hard to hit that ball around or over the inhabitants!

Saturday men's competition saw the following winners:

On Saturday 23/01/21

42 players took part in a single stableford. Bobby Plunkett was our winner with 43 points. Excellent game Bobby. Barrie Faulkner and John Dobson vied for second and third with 40 points. Nearest the pin on the 3rd was Barrie Faulkner; no one managed to get the ball onto the green on the 10th, John Dobson's ball hit the green on the 14th and Jeff Coe got the nearest on the 16th.

On another Saturday 30/1/21

36 people enjoyed the company of their friends and partners on the course in a 2 ball better ball stableford competition. Paul Woodall and Ian Thomson just beat Gerald Marsh and Neville Shearsby on a countback with 45 points. Well done guys. Nearest the pin on the 3rd was Col Chessell, Neville Shearsby brought it home on the 10th, Mike Innes on the 14th and Gerald Marsh on the 16th.

On Saturday 13/2/21

Was a single stableford where 29 players took part. Winners were, Ian Thomson 1st with 42 points and Michael Sheldrick 2nd with 36 points. Nearest the pin on the 2nd was Matthew Grant

with Neville Shearsby getting closest on the 10th. The 14th and 16th was conquered by Michael Sheldrick.

Our vets competition on the Tuesday was won by the following players:

Scott Thompson won the day with 39 points on the 26/1/21 which was a single stableford where 36 players took to the field. Andrzej Kozinski and Neville Shearsby battled it out for 2nd with Andrzej Kozinski taking the honours on a countback with 38 points. Nearest the pin was Sandra England on the 3rd, Scott Thomson on the 14th and 16th. Well done Scott.

Monthly medal winner on the 9/2/21 was Job Dobson out of a field of 45. His deserving nett score 65. Warwick Dolman came in 2nd with 67 and Michael Sheldrick following close with 69. Hitting the ball onto the green was J Williams on the 10th, David Dickeson on the 14th and John Dobson on the 16th.

On the 16/2/21

A single stableford was contested by 37 players and won by Gary Jonas with 39 beautiful points, followed by Ian Thomson who beat John Dobson on a countback with 36 points. Mike hit the green closest on the 10th hole, Nifty Nev took out the 14th and Wanda Kozinski won on the 16th.

Wednesday competition could still use a few more players. So if anyone, male or female are looking for a game on a Wednesday morning, please come and join us.

Continues on Page 33



Callala Bay Pharmacy

2/55 Emmett Street, Callala Bay 2540 Ph: 4446 4251

Hours: Mon-Fri 9am-5.30pm; Sat 9am -12.30pm

Friendly, professional service

- Diabetes Australia supplies • Baby weighing • Gift lines
- Blood pressure monitoring • Medication packing

FREE delivery every Thursday to Callala Bay, Callala Beach and Currarong

Dr John C Wright B.V.Sc.

CULBURRA VETERINARY CLINIC

7 Weston Street, Culburra Beach

9am-11am weekdays

4-6pm Mon, Tue, Thurs

4-5pm Wed, Fri

10am-12pm Sat

CALLALA VETERINARY Consulting Room

22 Emmett Street Callala Bay

1-3pm weekdays by appointment

Please phone: 4447 3851 for appointments, enquiries or after hour calls



E & S Painting Services

- Interior & Exterior Painting
- Friendly Local Service
- Excellent Rates
- Quality Assured

M: 0422 560 696 H: 4446 5056

Graham Worts

Callala Golf Club



Winners 6th February

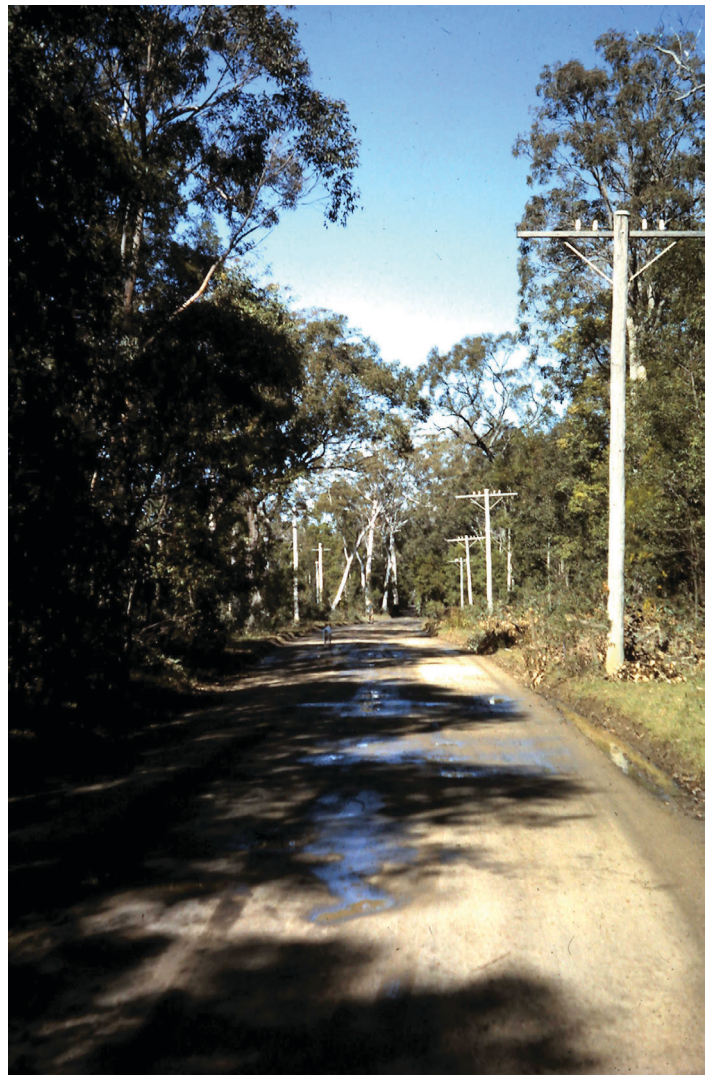
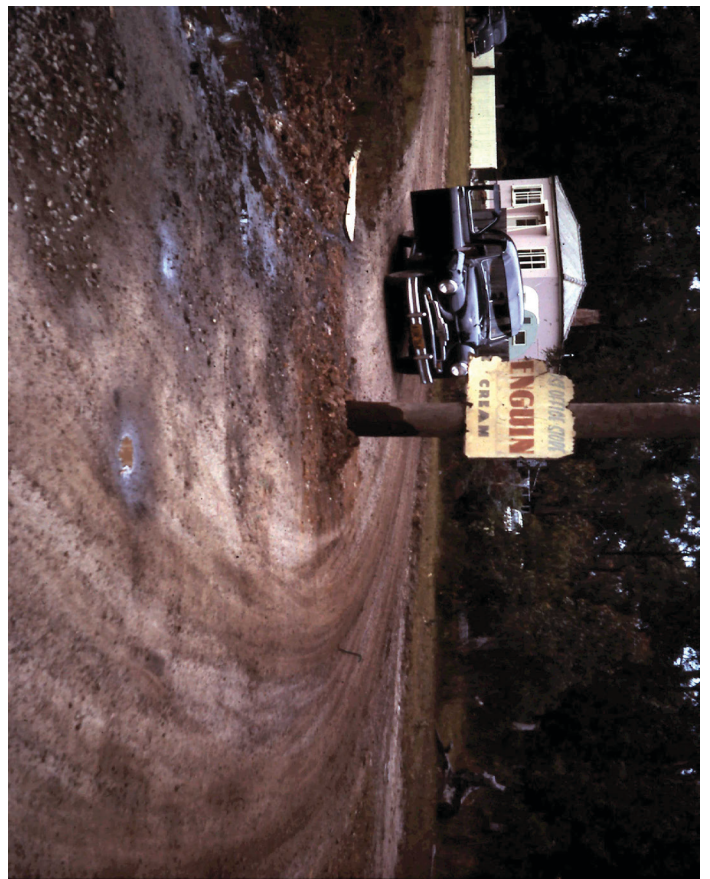
Local History

Our local community is rich in history and we are lucky to have locals that have lived and loved Callala Bay for decades.

One of our members Beryl Stenhouse has been a local since the 1960's and has seen Callala Bay grow from a tiny village to a ever expanding and popular place to live, work and holiday.

The first picture is from 1961 on the corner of Chapman and Watt streets looking South East.

The second is from 1965 looking south along Chapman St from the corner of Watt St.



COMMUNITY CONTACTS

Emergency Police Fire Ambulance –
000

Nowra Police Local Area

Command – 4421 9699

Crime Stoppers – 1800 333 000
(anonymous reporting)

Police Assistance line – **131 444**
(non-emergencies)

State Emergency Service – **132 500**

Jervis Bay Marine Park – **4441 7752**

Callala Doctor's Surgery – **4446 5350**

Shoalhaven City Council

General enquiries, business hours –
4429 3111

Emergencies and after hours – **4421**
3100

Justices of the Peace

Duncan, Howard – **4446 6535**

Garry, Rexeen(Rikki) – **4446 6649**

Hannan, Robyn – **4446 4428**

Rev Sue Fisher – **0406 815 449**

Lower, Jill & Graham – **4446 6281**

McMaugh, Dallas – **0400 189 875**

Taylor, Lorraine – **4446 5117**

Ward, Noel – **4446 6800**

Culburra & District Garden Club

Every 3rd Saturday of the month
at 1.30 pm at the Banksia Hall
Community Hall, Fred Evans Lane,
Culburra Beach (IRT entry)
More details - contact Doris

Carpenter - **4446 5631**

Culburra & Districts Community Health Service

Visit the Op Shop and pick up a bargain! Proceeds help maintain the Medical Bus that transfers people to Nowra for medical appointments from Greenwell Point, Culburra Beach, Callala Bay & Beach, Currarong and Myola. Please contact Culburra Pharmacy on **4447 2382** to arrange transport.

Culburra Beach & Districts Men's Shed

Every Monday and Wednesday
from 9.00am to 1.00pm, beside the
Banksia Community Hall, Fred Evans
Lane, Culburra Beach (IRT entry).

More details – contact Ray Sutton –
0499 452095

DISCLAIMER

The Publisher, known as Callala Bay Community Association Incorporated, does not accept any responsibility or liability in any way whatsoever with regard to any of the paying advertisers contained in this newsletter. Additionally the views and comments of all reports submitted are the responsibility of the person/organisations submitting same, including those from SCC (Shoalhaven City Council), which are usually copied verbatim from correspondence and are included for your information. The reports do not necessarily reflect the views of the Publisher.

Truck & Forklift Driving School

Desire Bhugon

RMS Approved: LR, MR, HR, HC (Auto
and Manual)

OLDER DRIVER ASSESSOR



Tel: 02 444 66861 Mobile: 0418 654 572 Email: desdschool@bigpond.com

**See the change
your home loan can make.**

Bendigo Connect Home Loan Package.

When you choose a Bendigo Connect Home Loan package, we'll reward you with a big interest rate discount.

And your home loan will add to the \$183 million already given back to help Australian communities thrive.

Drop into your nearest branch at 98 Kinghorne Street, Nowra or phone 4422 7574 to find out more.

Be the change.



bendigobank.com.au/homeloans

*Terms and conditions, fees and charges apply. Full details available from www.bendigobank.com.au/homeloans.
Credit provided by Bendigo and Adelaide Bank Limited ABN 11 068 049 178 AFSL/Australian Credit
Licence 237879. A427923-7 (382346_v1) (5/01/2018)



Happier, healthier pets

South Coast Veterinary Services
is your local, independent and
exclusive veterinary care provider.

Our complete range of in-home
and mobile pet services take the
stress out of trips to the vet
... for happier, healthier pets.



SCVS

South Coast
Veterinary
Services

Book a visit, manage prescriptions and
pay online. Get in touch for more details.

Dr. Glynis Kuipers

0412 319 110

office@southcoastvet.com.au

www.southcoastvet.com.au