

CALLALA BAY NEWS

OCTOBER 2016

Monthly newsletter of the Callala Bay Community Association Incorporated



Photos: Bill Downton

***Hey Mum.....the Callala Golf Open is on
Sunday 16th October 2016 at our Callala Golf Course.
With great prizes and great golf!***

hop on over to see more golf happenings on pages 12 and 13....

WHAT'S ON? @ THE PROGRESS HALL

BOOKINGS JOANNE MULLER 4446 4313

TUESDAY	10am - 12pm	CRAFT	Yvonne Fowler	446 6280
TUESDAY	2:30pm - 4:30pm	FOLK DANCE	Maureen Petherick	4446 6550
THURSDAY	6pm - 7:30pm	YOGA Beginners welcome Mats supplied www.roamingyogis.com.au	Ann Smallwood	0405 102 234
FRIDAY	3:30pm - 5pm	TENNIS LESSONS	Garry O'Connor	4464 1418 or 0412 068 116

Tennis court bookings can be made at Callala First National Real Estate - 58 Boorawine Terrace, Callala Bay or call on 4446 4313. Please make your bookings during office hours so that the keys can be made available (*available in daylight hours only*).

The hall is also available for function bookings including weddings, birthdays, baby showers etc.

CALLALA COMMUNITY CENTRE

With it's newly landscaped gardens, in the heart of Callala - It's the place for your next function.

Facilities include:

**A fully equipped kitchen • An elevated stage and sound system • Off street parking
Catering and seating for 120 people • Flexible hire times and reasonable rates**

What's On Regularly at the Centre:

Callala Christian Community Church	Sunday: 9 - 11am
Kids Korner - before and after school care	Mon-Fri: Call Jane on 4446 4218
Friends of Callala - over 50's social group	Mon: 12pm - 3pm - 4446 6535
Yoga email: info@samana.yoga	Tues: 6:15 - 7:30 pm
Callala Bay Community Assn. monthly meeting	2nd Wed of month: 7:30pm
For all bookings and enquiries call Jane: 4446 4218 - Emmett Street, Callala Bay (Opposite Bay Village Shops)	

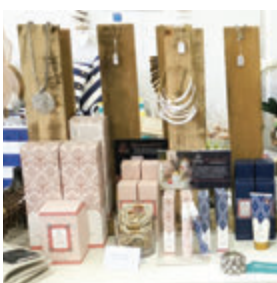
FASHION • JEWELLERY • GIFTS • HOMEWARES

Spoil yourself,
family & friends!

Shop 16/55 Emmett Street Callala Bay Shopping Centre
(next to The Sixth Sense café). **Ph. 0414 525 453**



facebook.com/barefootbeachcallalabay



CALLALA BAY NEWS

A monthly newsletter of the
Callala Bay Community Association Inc.
(www.callalabaycommunityassociation.com)



PRESIDENT & VICE PRESIDENT

Nominations Open!

TREASURER

Howard Duncan

4446 6535

SECRETARY/PUBLIC OFFICER

Margaret Duncan

4446 6535

MINUTES SECRETARY

Sandra McKenzie-Clark

4446 5280

COMMITTEE MEMBERS

Pauline Townsend

4446 6733

Jim Townsend

4446 6733

James Morris

4446 6037

John Green

4446 5902

Ray Plevey

EDITOR

Joan Lewis

4446 5368

lewisjr@bigpond.com

PO Box 14 Callala Bay 2540

INDEX

Hey Mum	Page 1
Comm:Hall/Carols	Page 5
CBCA Report.....	Page 6
Club Callala Updates.....	Page 7
Gardening Club/Tennis.....	Page 9
Medical Centre.....	Page 11
Men's Golf.....	Pages 12/13
The Gilmore Diary.....	Page 16
Fishing Tales.....	Page 18
Callala's Beginnings - Part 3	Page 19
Police Report.....	Page 20
Church offerings.....	Pages 23/24
Bushcare News	Page 24
Soccer News.....	Page 27
Club Community Event.....	Page 28
SCC New Council.....	Page 31
Travel News.....	Page 32/33
Membership Application.....	Page 34
Community Contacts.....	Page 35

FOR SALE

If you have anything for sale we will enter it here for free for this year, but next year the charge will be \$5.00 per inch (25.4mm).

Ed.

Nothing soothes the soul
like a walk on the beach.



Note from the Editor:

If you have an issue or concern that needs to be raised, why not send it to the Editor. This should be brief, to the point and with the intention of having it published.

With each monthly newsletter, It is hoped to bring you events and items of interest to keep the community informed and entertained.

Ed.



Pottenger & McGhee Solicitors

Nowra & Huskisson

Conveyancing | Wills & Estates | Business Law | Leases

We look forward to meeting you and helping
you with your legal needs.

Level 1, 25 Kinghorne Street, Nowra Phone 02 4421 6166
Level 1, 64-66 Owen Street, Huskisson Phone 02 4441 7973
Email: pbetts@potmac.com.au

If you can't come to us, we can come to you!

SAILING SEASON IS NEARLY HERE

CALLALA JUNIOR SAILING SCHOOL

Did you know that we have a sailing school here in Callala? The Callala Junior Sailing School has been operating here since 1991 and the club house since 2002 . Another season is now upon us.

Run by a group of loyal volunteers who love sailing and passing on there knowledge and skill onto the kids who attend the Sailing School.

The School operates Saturday mornings 8.30am – 11.30am at the clubhouse near the boat ramp.

If you are interested why not come down and have a look . Kids from 7 years are welcome to join the school. We supply life jackets and safety gear , as long as you can swim and are comfortable in the water are welcome.

Page 4

The season starts in earnest on the 8th of October. Registration fees are \$ 130 for an Adult and 1 child and \$20 for each additional child , this is for the whole season with no additional weekly charges . Season runs through until Easter next year with a break over the Christmas period.

You can give it a go for \$10 a day as a trial.

Any enquiries please contact.

Ron Clapham 4446 4199

Mike Robbins 4446 4346

CALLALA COMMUNITY CENTRE MANAGEMENT 2016/17

The following were elected as office bearers at the AGM held 15th September 2016.

- President Ray Coid
- Secretary Elaine Coid
- Treasurer Howard Duncan
- Booking Officer Jane Gardner
- Maintenance Officers Jim Townsend
Bill Price
Raymond Plevy

President Ray Coid reported the following for the year 2015/16

1. Installation of disabled picnic table set and concrete pathways from the sports car park to the new table and to link to the existing table
2. Renovation of existing picnic table set and addition of extra seat
3. Installation of baby change table
4. Painting of auditorium, hallway and Kids Korner room
5. Installation of dado rails in auditorium to protect walls from chair damage
6. Repair to car park
7. Repainting of car park space lines and disabled sign
8. Removal of dangerous power pole
9. Continued maintenance of garden
10. Planning for extra store room

Treasurers's Report - NET ASSETS \$15,947.45



**The Callala Business Chamber is pleased to
present**

CHRISTMAS CAROLS AT CALLALA with The SiRenics Duo

to be held on the Soccer Oval of the Sports
Complex in Emmett Street, Callala Bay
21st December 2016 at 6pm

This year's event is all about song and dance
with performances by local pre-school children
and special words from the local pastor.

Plus of course, a visit from **Santa**.

All welcome - bring a rug, bring a chair, and
bring a friend

Food, drink and a wood-fired pizza vendor will
be available.

**So, let's all get together and celebrate the
Christmas spirit.**

MR MIKE SPARKLE BRIGHT

ABN: 50 534 685 256

Professional Window Cleaner



All Types of windows cleaned
including Fly Screens, Window &
Door Frames Tracks and Runners

We can offer our customers Solar
Panel Cleaning (*single story only*)

Very Reliable • Free quotes

**Ring Mike on:
0406 467 026 or 02 4446 6684**

CALLALA BAY COMMUNITY ASSOCIATION (CBCA)

Report October 2016

The CBCA would like to congratulate all newly elected councillors and look forward to working with them. We express our thanks to all previous councillors for their support and assistance given to the CBCA during their administration.

Fund Raising

Thank you to all those who supported the Election Day Sausage Sizzle. We raised approximately \$180.00. All profits generated by the CBCA go towards supporting community projects. Our next fund raiser will be a Sausage Sizzle and Plant Sale to be held on the October long weekend in the Bay Village Shopping Centre.

New Members

Three new members were ratified at the meeting, Kelly Horn, Andrea Matis and Antony Matis. Welcome.

The CBCA expressed support for the 2016 Christmas Carol Program to be managed by Craig Wallace from Callala Cellars on behalf of the Business Chamber. We will discuss with Craig what assistance he requires.

Members of the CBCA committee met with Uncle Noel Wellington to discuss and agree on the design and installation and location of the logs depicting local indigenous culture and use of the Callala Bay Headland. Noel is a traditional descendent of the Jerringa Wandi-Wandian Clan. He is a renown and recognised indigenous artist. He has work on exhibition at the National Museum in Canberra and recently exhibited at the opening of Barangaroo in Sydney. It was agreed that the CBCA provide a \$1000.00 deposit to Noel when approval is finally obtained from the SCC.

We are still waiting on the outcome of three grant applications. We have applied for a grant

from the NSW Govt Community Partnership Building Program to complete the walk from Sheaffe St to Watts St along the foreshore. A grant from Veolia Mulwarree Trust to erect a shelter over the picnic table at the Skate Park and a grant from the Dept. of Sport and Rec- Fisheries to construct a roof over the fishing table at the boat ramp.

As part of the holiday road safety campaign aimed at keeping our children safe we requested and have received appropriate safety warning signs from the Little Blue Dinosaur Foundation and the SCC. The primary aim is to increase the awareness of drivers that in 'Holiday Times' there is an increased risk associated with children using or playing on roadways of which they are not familiar. Probable locations for the signs are Bay Village Shopping Centre, Skate Park and Sporting Precinct, Boat Ramp and Park and Bicentennial Park. We welcome suggestions for other appropriate locations.

Local Skate Park users have been invited to create and submit designs which can be painted on the Skate Park ramps. We believe that once painted it will reduce or eliminate the anti-social "tagging" practices.

Our current minutes secretary, Sandra McKenzie-Clark is off on a sabbatical. We wish her well. However, we do require a minutes secretary to take over while she is away. Sandra has also expressed a wish to step down from this role on her return and focus on other functions with the CBCA. The committee is very stretched currently as we do not have a President or Vice President. James Morris and Howard Duncan are acting as interim executives, and all committee members are multi-tasking at the present time.

We are looking for a member to volunteer their services to assist us. Please contact Howard on hgmada@bigpond.com if you are willing to put your hand up.

**THE NEXT MEETING WILL BE OCTOBER 12th
7.15 pm FOR 7.30 pm START - AT THE CALLALA
COMMUNITY CENTRE, EMMETT ST. JOIN US
FOR A COFFEE AND A CHAT.**



What's On In October

7 Day Courtesy Bus Available

Commencing at 4 pm, please ring the Club to be picked up (on the hour from Callala Bay and on the half hour from Callala Beach and Myola)

Free WiFi available at the club.

- **Mickey Bear 'ADULTS' Karaoke**

Saturday, October 15, 6 pm till late in the Main Bar Area. Strictly for an adult only fun night, get your friends together, have a drink and sing along to all your favourite hits!

- **Halloween Trivia**

Monday, October 31, 6.30 pm Prize for best costume!

- **Melbourne Cup**

Tuesday, November 1. Will be a great day commencing at 11 am in the auditorium. There will be a Ladies Fashion Parade, bar staff will collect bets and place them on for you at the TAB, lunch served by the Beachside Bistro. It will be a great day for all.

- **Callala Beachside Bistro**

OPEN EVERY DAY Monday to Sunday 10 am till late, for Bookings & Opening Hours call: 4446 5509.

Regular Weekly Events

- **MONDAY**

Indoor Bowls – names in by 11.45 am, for a 12 noon start.

Trivia Night – from 6.30 pm - FREE ENTRY, great prizes.

Golf – Visitors can play any time during the day.

- **TUESDAY**

Women's Bowls – starts at 9.30 am.

FREE Meat Raffle – drawn every half hour between 4 pm – 6.30 pm.

Darts – Competition & Social from 6.30 pm.

Golf – Veteran's Golf Competition from 7.30 am.

Visitors can play from 10 am onwards.

- **WEDNESDAY**

NPL Poker – Rego from 6.30 pm for 7 pm start, Up to \$250 in cash prizes EVERY week.

Men's Social Bowls – names in by 12.30 pm for a 1 pm start.

Golf – Ladies' Golf Competition from 8.30 am.

Visitors can play from 10 am onwards.

- **THURSDAY**

Bingo – Eyes down at 11 am – 2 pm. Special \$7.50 Lunch Offer for Bingo Players.

Bowlers Raffles – from 6 pm Up to 10 Prize Draws.

Member's Badge Draws – Win Cash 6.50 pm, 7.20 pm & 7.50 pm. You must be present in the Club, to claim your prize.

Golf – Visitors can play any time during the day.

- **FRIDAY**

Seniors Exercise Class – from 10 am.

Major Meat Raffle – 40 Meat Trays and 10 Vouchers - tickets on sale 6 pm, raffle starts at 7 pm.

Golf – Visitors can play any time during the day.

- **SATURDAY**

Golf – Men's Golf Competition from 7.30 am. Visitors can play from 10 am onwards.

- **SUNDAY**

Meat & Seafood Raffle – tickets on sale at 4 pm, raffle starts at 5pm.

Golf – Visitors can play any time during the day.

Events, times and dates may change, due to unforeseen circumstances.

AMM Accounting & Associates

ABN: 34 919 202 132

Accountant & Registered Tax Agent

17 Years specialising in Individual, Business and Company Accounting

BAS & IAS Lodgements • Self Managed Super Funds • Company Incorporation

I can assist individuals and businesses who have outstanding lodgements or current ATO debts

PLEASE CALL FOR AN APPOINTMENT OR INITIAL ADVICE

Angela McCarthy MTMA, JP

PO Box 4085 Nowra East NSW 2541

Phone: 0409 421 755 or 4447 8068

Email: nowra@ammaccountingpicton.com.au or amconsultancytyld@bigpond.com (direct)

www.ammaccountingpicton.com.au

 /ammaccountingnowra



CENTRAL
SHOALHAVEN
MOBILE

Preschool 

Central Shoalhaven Mobile Preschool is a community based not for profit organisation operating for 38 years in the Shoalhaven area. We provide educational programs designed for preschool children aged between 3 - 5 years by fully qualified staff in a caring environment. Allow your child to make new friends within the local area. Subsidy available. We operate from Callala Beach Community Centre, Quay Road Callala Beach on Tuesday and Wednesday.

PRESCHOOL HOURS: 9.00 - 3.00 ADDITIONAL HOURS: 8.00 - 9.00

All enquiries please phone our office on **4423 0571 / 0432 274 244** or call in at our venue.

www.shoalhavenmobilepreschool.com.au



Enrolment for children 2 to 5 yrs

Opened 8am – 4.30pm

University & TAFE trained teachers

‘School Readiness’ curriculum

Fee rebates available to eligible families

Awarded **‘Exceeding National Quality Standards’** by the NSW Department of Education and Communities.

For further information please call us on **4446 6089**

GARDENING CLUB

Hi everyone,

A florist is a person who sells and arranges cut flowers. Guest speaker for our September meeting, Peter Phelps, from Nowra Flamingo florist is much more than that- he may sell and arrange flowers but he is also very passionate about the source of his flowers and changes in the flower growing industry in Australia.

Peter said that all anxiety, stress and problems in world affairs disappear when we go out and work in the garden and we all agreed with his statement. Peter started at 19 years of age when he bought a share in Flamingo Florist and as he said -it's an emotive and busy business.70% of his flowers are imported and he brought a sample of roses from Holland, India, Africa and Colombia to show that we live in a global economy.

He remembers a time when Italian farmers were growing most flowers such as gladiolas, sweet williams, chysanthemums and carnations- flowers of yesteryear.

As he has travelled through Asia, the most popular flowers are our Natives.The Asian market can't get enough.To highlight this, Peter arranged the biggest bouquet of mixed floral natives that we have ever seen - nearly a metre tall and stunning. (*Lucky Elaine Coid won it in the raffle.*)

For his second bouquet he used pure white Singapore orchids with cordyline and ferns tied with raffia and the effect was gorgeous. (*I was thrilled to win it*).

Peter is a very talented man and we appreciated his time at our meeting.

On his blog he writes" Flowers spread warmth and make strangers feel welcome.Flowers bring in positive mind sets and happiness"- how true!

Members were asked to dig out their old teapots and use them to showcase their spring flowers.

The most popular spring plant on show was the Spanish Bluebells (Hyacinthoides) These grow from a bulb and thrive in sun or shade. The flowers are blue,white or pink with a faint perfume and they stand out in any garden.

We meet every 3rd Saturday of the month(except December and January) at the Banksia Senior Citizens Hall, IRT entrance, Culburra Beach at 1.30 pm starting time.

Happy gardening and hope to see you at our next meeting.

Doris Carpenter
Secretary – 44465631



Tennis Lessons

Did you know Callala has tennis lessons on a Friday afternoon from 3.30 pm onwards at the Callala Bay Tennis court???

"South Coast Tennis" is operated and run by certified ATPCA (Level 2) and accredited coach Garry O'Connor. Garry has been coaching children and adults for over 40 years. His experience and knowledge is extensive and he has created a wonderful environment for children to learn and have fun while developing true skills to play tennis.

Garry or Mr 'O' as his adoring students call him (he has the patience of a saint, he's kind and encouraging.... and best of all, the kids think he's wonderful) also runs casual classes, private and semi-private lessons.

Garry is a highly recommended coach and if you're wanting more information please call him on 02 4464 1418 or 0412 068 116 otherwise drop down to the tennis court on a Friday afternoon, in the school term, for a friendly chat.

NB: Next term lessons start on
14 October - 25 November 2016.



Dan Mangan

Ph: 4446 6544

18/55 Emmett Street
Callala Bay 2540

**Your Local Butcher
The Meat Specialist**



Yoga with Judith for a balanced life

Fun & Friendly Yoga classes
held in Callala Bay

For further information, see
www.yogawithjudith.com.au

or contact Judith on **0408 865 437**
or email judith@yogawithjudith.com.au

Lauren Sams

INTERNATIONALLY CERTIFIED MEDIUM

*"One of the best parts of my job is helping to bring
closure and healing to those who have lost loved ones"*

FULL DETAILS & REVIEWS: 

www.laurensamsmedium.com

CALLALA BAY & HUSKISSON



BOOKINGS:

0416 301 575



CALLALA GALLERY

15 Callala Beach Road, Callala Beach

All Artworks on display at the
Gallery are For Sale.

Paintings done on commission.

Callala Gallery on facebook

www.artclassesnowra.com

ART CLASSES

for beginner to advanced, for Adults and
Children. **In: Acrylics, Oils, watercolours,
drawing and Mixed Media**

School Holiday Workshops

Phone: 4446 5770 or email:
roslyn.chatham@bigpond.com

Borg Power Solutions Pty Ltd T/A



Electrical Lic 231840 C

Accredited Service Provider

- ◆ Grid Connect Metering
- ◆ Solar Power Installations
- ◆ New Electrical Work
- ◆ Hot Water Repairs

2 Cronin Place Callala Bay

Mobile: 0412 939 709

Phone: 4446 5996 Fax: 4446 6610

info@borgpowersolutions.com.au

www.borgpowersolutions.com.au

Torrens Embroidery

T: 4446 5368 - Joan

I can machine embroider designs on your
fabric or mine to produce a unique gift for
someone special or just for yourself.

Let me know your
thoughts/ideas
and we can create
together.

Email:
lewisjr@bigpond.com



CALLALA MEDICAL CENTRE

September was Dementia Awareness month. More than 350 000 people in Australia are living with dementia, and it can affect individuals differently.

Life does not end with a dementia diagnosis. There are treatments available to help slow the rate of dementia or prevent worsening of the condition.

We can also help dementia sufferers with their hearing or their vision, to help them stay independent and safe at home for as long as possible.

However, there are a lot of people also living with gradual dementia and just putting down their memory loss to old age. Compared to the rest of the population, people with dementia are twice as likely to suffer from loneliness and depression due to their isolation from their family and friends. Plus people caring for loved ones with dementia also suffer - to due to changes in their loved one's personalities.

If you know someone who has had a big change in their personality, or if you are worried about them caring for themselves, you can find out more about dementia from <https://nsw.fightdementia.org.au> or the National Dementia Helpline on 1800 100 500, or have a chat with your *friendly team at Callala Medical Centre.*



White Egret Orchid (*Habenaria Radiata*)



The Point Gallery & Craft

OPEN: Fri-Mon 10am-4pm

All Art & Craft Locally Made

76b Greenwell Point Road

CULBURRA BEACH



PRESCHOOL

4447 3838

2 to 5 years

**Sunshine Street
Culburra Beach**

EXTENDED HOURS - 8AM TO 6PM
www.cbpreschool.com.au

- ◆ Individualised early learning programme provided by University & Diploma trained staff.
- ◆ Morning & afternoon tea are provided **FREE**.
- ◆ Families can receive CCB (Child Care Benefit) PLUS the 50% Child Care Cash Rebate.
- ◆ Families that have a Health Care Card or receive 'Family Tax Benefit Part A' will pay as little as **\$16.50 per day** after receipt of 100% CCB plus the 50% cash rebate.
- ◆ Open 50 weeks of the year - visits welcome.

CALLALA MEN'S & VET'S GOLF CLUB NEWS

Bill Downton

Tuesday 16th August Vet FOUR BALL EVENT AT CALLALA

The Team of Graham Weston & Roy Nichols were too good for the rest of the Field at Callala on Tuesday & won easily with a handy Score of 51 Points. Their closest rivals were the Team of Barry Whitlock & Bill George who submitted a Score of 48 Points.



Graeme Weston



Perry Cousins



Harold Reynolds

Saturday 27th August

4 Ball Better Ball plus stroke was the format for today's competition.

Showing their combined talent Tony Pitt-Lancaster and Jamie Reardon came home as clear winners with Col Chessell and Graham Lewington coming home in 2nd place.

Saturday 20th August

Par Event today with Adam Ruperto coming home as a winner with a +6.

Second past the post today was Ken Black with and also impressive +2



Adam Ruperto



Ken Black



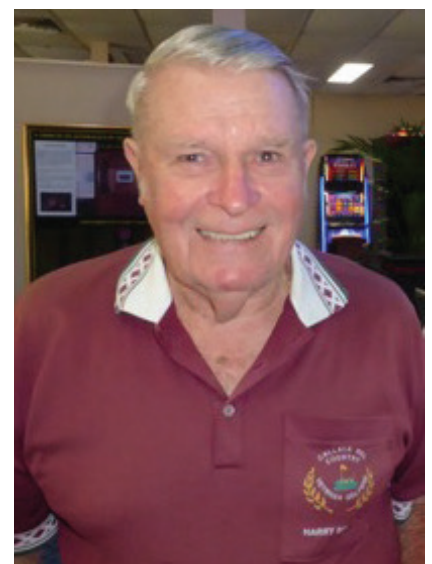
Col Chessell



Graham Lewington

Tuesday 30th August Vets

Today Harry Dowling took the single stableford event to task coming home with 39 points with his closest rival Ken Black coming into second spot with 37 points.



Harry Dowling

Tuesday 23rd August Vets

Not such great weather for today's Single Stableford but Perry Cousins was not going to let a little bad weather get in the road of him playing some great golf to come home to win the day.

Harold Reynolds also displayed his talents to come in to second spot.

Saturday 3rd September

Monthly Medal winner for this month was Barrie Faulkner who with his outright win also took out the win for "C" Grade. "A" Grade winner was Rob Jerman and "B" Grade winner Tony Pitt-Lancaster.



Barrie Faulkner



Rob Jerman

Today after a relaxing 18 holes Perry Cousins took his place atop the podium as winner of today's competition. Runner up with only one point the difference was Doug Ingle who put in a great game to achieve his result.



Doug Ingle

Tuesday 6th September Vets

First round of Vet's Club Championship Plus Monthly Medal was contested with a good field of players.

New member, Neil Sparks won his first Monthly Mug at Callala with a handy Score of 67 Nett. Nearest rivals for the Mug were John Love, Bob Plunkett & Glen Hughes all with Scores of 68 Nett.

Saturday 10th September

A keen field of players fronted up at Callala today for the single stableford competition.

Tuesday 13th September Vets

Perry Cousins upstaged all Players to win the Stroke Event at Callala with a very tidy 65 Nett Scoreline. Runner Up, Doug Ingle & Third Place Getter, Gordon Hargrave on a Countback with fourth Place being taken by Harold Reynolds (66 Nett)

Today was the second round of the club Veteran Golfers Championships. Various Grade winners will be announced at the completion of the Event.

Callala Open Golf Tournament

Sunday 16th October 2016

Callala Golf Course at rear of Club Callala

43 Callala Beach Road, Callala Beach

Great Prizes, Great Golf with the chance to drive home in a New Isuzu D-Max, Complements of The Country Motor Group, Bomaderry. For bookings or further enquiries please contact the Callala Golf shop on **4446 5112**.

CALLALA MEN'S VETERAN GOLFERS

Invite YOU to Come and Join US!

Play 18 holes of golf every Tuesday and join the Callala Vet's Golfers at Callala Golf Course, Callala Country Club, 43 Callala Beach Road, Callala Beach.

We have a 'Monthly Medal' round, followed by a tasty BBQ lunch. You will appreciate what we consider to be the most challenging 18 hole golf course on the South Coast. Fun for the novice golfer while also testing the low handicapper.

For all your golfing needs come and visit the fully equipped Golf Shop with the following facilities:

Golf Clubs, Balls and Accessories • Golf Club and Buggy and Cart Hire • Drinks and Sweets

Membership to join the Golf Club: Men & Ladies - \$200

Members: 18 holes: \$12 - includes entry in raffle and ball competition

Visitors: 9 holes: \$15 - 18 holes: \$20

Enquiries Please phone: 4446 5112

Prizes for the best scores plus a 'ball rundown'. There is the meat raffle with 4 draws at the presentation day. Whether you are a local or a visitor, if you have a current Australian Golf Link number and handicap, you are most welcome to join us on a Tuesday, including Ladies!

Males 55 years or over can join the Vet's. Ladies and visitors also play on the day. If you would like to join us for great golf and friendly company, contact the Golf Shop on: **4446 5112** between 8am and 5pm and arrange a time slot between 7:30-9:30am.

Join a welcoming and cheerful group for a good day of golf and friendship!



Weekly shows in Shoalhaven area **PLUS**

* One-off Shows & 'Golden Oldies'

* Emcee Services

* New entertainment options coming

Call Dianne: 0407 342 663

triviatonightinfo@gmail.com



NEW!

SENIORS MOBILE OFFER

**Includes an
easy-to-use
mobile phone**

\$17 a month

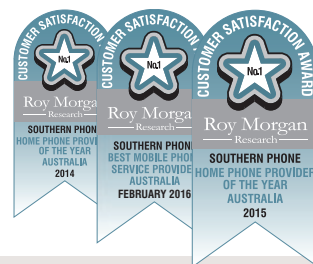
\$15 a month + \$2 Handset Fee

■ **\$50 Talk & Text**

Minimum cost over 24 months is \$408.

Southern Phone's Seniors mobile phone plan includes:

- **Easy-to-use Onix Mobile Phone**
- **\$50 Talk & Text Credit**
- **Regional Call Centre**
- **Award Winning Customer Service**



Onix Big Button Mobile Phone

The Onix Big Button mobile phone is perfect for people after a simple mobile phone.

- Large Buttons ■ Big Text
- 3G ■ SOS Emergency Button
- Simple Flip Design ■ Easy to answer and end calls

The cost of a 2 minute call is \$2.38, an SMS is 25 cents and data is 5 cents per MB with a minimum charge of 25 cents.

CALL
1800 720 326

southernphone
looking after regional Australia

Things you should know. Each month you'll pay a \$15 plan fee + \$2 handset fee and receive \$50 for calls to landlines and mobiles, SMS, MMS and voicemail. Once the credit limit is reached normal charges apply. Calls and texts to premium numbers, international calls and roaming, directory assistance, mobile commerce transactions and mobile internet are not included in your call credit. There is no included data in the plan. The cost of a 2 minute call is \$2.38, an SMS is 25 cents and data is 5 cents per MB with a minimum charge of 25 cents. An early exit fee applies if the mobile service is not connected for the full 24 month contract period. This is \$12 times the months left on the contract. Southern Phone uses part of Telstra's 3G mobile network. While stocks last. Offers may be changed at any time without notice. To approved customers only. Offers expire December 31, 2016. For full details see www.southernphone.com.au

The Gilmore Diary

By Ann Sudmalis

We live in a special part of the world.

As the Federal Member for Gilmore I am aware of the generosity of people in this region. Representatives from a range of organisations including the Red Cross and Salvation Army have regularly told me how donations in Gilmore are above the average for other parts of the nation, however I was not prepared for what I saw during a recent visit to the St Vincent De Paul warehouse in South Nowra.

Under the stewardship of St Vincent De Paul regional centres manager Rod Douglass, the warehouse that was opened earlier this year is already bringing in huge amounts of donated clothing and other items.

In fact there is so much donated that after the best is kept for resale at Vinnies shops throughout the region, there is enough left over to fill a shipping container each week during the warmer months, and fortnightly during winter. About 16 to 18 tonnes of clothing is shipped overseas where it is distributed through organisations including World Vision and Oxfam to people in need in some of the world's poorest nations.

Cutlery, crockery, cookware and other assorted bric-a-brac that is excess to local need is also sent overseas, while Vinnies at South Nowra is in the process of shipping out 180 new computer desks to schools in Fiji that were damaged in a recent cyclone.

This work is carried out by a team of 360 volunteers and Work for the Dole participants, who put in close to 3500 volunteer hours each week. The volunteering effort and local generosity really is changing lives across the globe, and of course changing lives at home too, with Vinnies helping out people who are in need.

It is also having a major impact on the lives of people helping out in the warehouse, who are building new friendships, confidence, skills and connections in their local communities.

That is one of the great things about volunteering – it creates new connections, friendships and networks that are such a vital part of an enjoyable life, as well as giving people a sense of achievement and belonging.

Recently I have been able to thank many local volunteer groups for the contributions they make to our community, as well as passing on thousands of dollars in Federal Government grants to help with things including buying new equipment and upskilling volunteers.

However it has become obvious that there are times our local voluntary organisations are working on projects in isolation, unaware that other groups are trying to achieve similar things.

My office is working on helping volunteer organisations connect and work together, and I'm asking all organisations to email their contact details, and any projects they are working on, to ann.sudmalis.mp@aph.gov.au.

Daylight saving ***begins*** in NSW on Sunday, 2 October 2016 when clocks go forward one hour at 2:00am.

Daylight saving ***will end*** in NSW on Sunday, 2 April 2017 when clocks go back one hour at 3:00am



JOHNSTON TOBIN

Solicitors

4421 5344

For all your Legal and Conveyancing needs

Criminal Law • Family Law • Wills & Estates • Property Matters
Conveyancing • Commercial Law • Litigation • All Court Matters

74 Berry Street, Nowra NSW 2541



GP JAMES CLEANING SERVICES
The Royal Treatment

Fast Reliable & Trustworthy

- *Specialist in Holiday home cleaning
- * Linen Hire and Laundry Service
- *Domestic and Office Cleans
- Bond and Rental Cleans

Fully Insured



0402576859 0244465000 gpjamescleaning@gmail.com



Nowra & Coast
REAL ESTATE P/L

"Where Experience Makes The Difference"

What is your property worth!

Thinking of selling or renting your property ?

Free Market Appraisal

- * Deal directly with the principal
- * We operate 7 days and public holidays
- * Pensioner discounts
- * Honest, personal, professional service
- * Lower overheads means lower fees

Contact Vicki On 0427 210 066 Or 44 472 920

A Proven Track Record With 23 Years Experience

5 Otranto Avenue Orient Point NSW

Web: www.nowracoastrealestate.com.au

Email: vicki@nowracoastrealestate.com.au



FISHING FROM AFAR

Hi Fellow Fishos,

Whilst at Weipa one of my son's fishing mates, a professional fishing guide, had just bought a new boat and wanted to show it off to DJ. So DJ organized a trip outside, barra fishing. The boat is set up for fly/lure fishing but can be used for bait fishing as well..



We would be fishing rock outcrops found along the beaches. The idea is to locate an outcrop on the beach, drop us off, anchor up whilst we fished, then pick us up when we are finished and go find another outcrop to be fished. To anchor up, at the back of the boat he has an hydraulic pole which he drives into the sand and holds the boat in place. We then hop onto the sand and fish the outcrop.

The requirements for this style of fishing are:- no waves, and clear shallow water so he can see where the rocks are. We can check for crocs and he knows he is over sand to drive his anchor in and a rising tide and he doesn't get stuck whilst we are fishing.

It was quite exciting, particularly watching for crocs as some of the rock formations were a bit murky though all were shallow. We only ended up with one barra, just legal 59cms, caught by yours truly on a miscast lure

I kept it anyway. Plenty of other species though, all returned to sea. Bargy[owner of boat] has a mate with a similar boat and they do 1 to 5 day tours, and will even take you to The Cape [1 hour by car plus 4 hours by boat], where you can fish and shoot pigs to

your hearts content. All gear provided. Probably outside my budget unfortunately.

Till next month, good health and good fishing. Will be fishing.

Jon Lee



CULBURRA & DISTRICT COMMUNITY HEALTH SERVICE

We maintain the Op Shop, Ambulance Station, Medical Centre and Medical Bus.

Contact Culburra Pharmacy on
4447 2382 to book
(travel is by donation)

Saleable furniture can be collected
by phoning Jim on:
4446 6733 or **0419 538 963**

Drivers phone Neil on:
4447 4713

CALLALA BAY'S BEGINNINGS – AN EARLY RESIDENT'S PERSPECTIVE

EPISODE 3

Continuation of Callala Bay's History

In the early 1950s, the Defence Department realigned and rebuilt Forest Road, and offered Shoalhaven Council a 50/50 option to tar seal the road. At times of heavy rain and flooding, Forest Road provided the only high level access above the flood waters to Callala Bay, Callala Beach, Myola and Currarong. However, the Shoalhave Council declined the Defense Department offer, claiming it was only a defence road to a bombing range. *(However Forest Road was finally tar sealed in 2007).*

During the Second World War, a decoy for submarines was anchored inside the Jervis Bay Heads. During a storm, this decoy broke loose and couldn't be refloated. The decoy wreckage remains and is still visible at the mouth of Callala Creek. The timber and chrome railings were sourvenired by locals and used to build household furnishings.

sWhen the Navy ships were returning to HMAS Creswell after a tour of duty, they would off load stores into the Bay which would then be washed ashore near Red Rock. The tremendous amount of offerings, which were in excellent condition considering their watery arrival - was like Neptunes supermarket. The locals-especially the children, were always on hand to collect the bounty.

Around 1957, the Shoalhaven Hospital was considered small and unable to cope with the expanding population of the surrounding areas with the most serious cases having to be sent

to Wollongong. In her Annual Report of 1965, the Secretary Kathleen Forster advised that the Callala Bay Progress Association was petitioning Ministers and Government members to expedite the expansion of the hospital as soon as possible to cope not only with population growth, but also the ever increasing road accidents occurring in the area. A young man of the time told Barbara Mitchell that Billy the Kid killed 21 people before he was 18 years of age. Barbara wanted to know what make of car he drove!

By 1965, Callala Bay needed a place to dispose of garbage, and Council officially arranged for a dump to be installed on the land at Forest and Coonamia Roads. Initially the original tip was in the vicinity of the shopping centre on the corner of Emmett Street and Fleet Way. (locally called the 'hair pin bend'). It still meant residents had to either trudge up the track or try and drive their vehicles to the spot to offload. But it was considered a huge benefit to the area after much letter writing, telephone calls and 'nagging' by the Association. About this time a Council bulldozer was hard at work cutting out the access roads to Callala Bay, but finalisation took a number of years. *(more – next month).*

(With grateful thanks to the Mitchell Family for historical material loaned to us)

POLICE REPORT

ON THE BEAT

I promise that this on the beat episode will have nothing to do with taking valuables out of your vehicle, locking cars, locking your house or securing your credit cards. I won't even mention anything about drinking too much intoxicating liquor or failing to quit a licensed premises or dobbing in a dealer.

I have already mentioned these topics in one or more of the 82 episodes of on the beat that has been published over the last couple of years. So while I was trying to think of a topic for today my mind wandered off. First I imagined a monkey playing the cymbals but then I imagined Summer time with endless days of fishing, skiing or just cruising around in my 130 ft motor yacht (*I told you my mind was wandering*).

Back to reality now and I want to tell you about boat security. Many people have boats. From the humble Tinny to the not so humble big marlin catcher, however they all have a number of things in common. They can all be broken in to and/or stolen. Therefore there are a few tips for security of your vessel such as:

- Security devices installed on boats should be resistant to water, salt and humidity.
- Locks: Marine dealers carry special exterior hatch locks. When fastened with a quality padlock, one of these improves security.
- Windows: To enhance window security, locksmiths carry a variety of special, small locks and fasteners, which can be used to increase the security of other types of windows. For sliding windows, place a length of doweling in the track to prevent the window from being forced open.
- If your boat is kept in the water, use a marina with full time security and/or good lighting. If you are leaving your boat for long periods of time, ensure that someone else is able to check your boat on a regular basis.

- If you can, store your trailer in a locked garage, secured boat storage facility or mini storage stall. If the trailer is stored at home, put it in the back or side yard out of sight.
- If storing in an open driveway or car port, park another vehicle or other large object in front of the trailer. Consider removing one trailer wheel or using a wheel lock. Secure the trailer to an anchored object with a good quality chain and lock. Purchase a good quality trailer hitch lock and use it – even if stored inside.
- When you take the boat off the trailer and park the trailer at the local boat ramp, make it hard for the crooks to take the trailer by locking the hitch using a hitch lock or padlock

As always, in case of emergency **call (000)**

Non Emergencies, **contact Police Link on 131444 or you're local Police**

To provide anonymous information, **call crime stoppers on 1800 333 000**

Don't forget. Cops are tops.



Callala Bay

Open 7 Days A Week

Market-Fresh Fruit and Vegetables

Lotto

Newspaper

ATM

It Pays to Shop Independent

Located in Bayview Plaza, 55 Emmett Street, Callala Bay

How the locals like it™

CALLALA COMMUNITY CHURCH

During our life's journey we often get interested in a variety of activities or interests; some we pursue for a short time while others remain for most of our lives. For me, I became interested in old cars during my teens, especially those that had been modified and were now powered by much later engines and transmissions. This interest has continued to this present day.

This week a friend of mine happened to call at my place and noticed the rather rusty remains of a 1929 Ford model A roadster, at which he commented; "What are you going to do with that, surely it is only good to take to the scrap yard?" To his bewilderment I told him that not only was it worth a reasonable amount of money, but, it was my intention to rebuild it and that one day it would again travel the roads as a thing of beauty (at least in my eyes) and become a useable and different means of transport; not to mention that it would be a reminder of days gone by.

Thinking about my friend's comments caused me to reflect on how we sometimes look at some of life's less fortunate people. How often have we heard someone say; "That person is just a waste of space." Maybe we have looked at the drunk or the dirty and disheveled homeless person, dismissing them without a thought of what sort of life might have brought them to their present condition. I looked upon my old car with eyes that could see past the rust and brokenness, I could picture in my mind's eye the finished vehicle, and therefore I saw beyond what is now and saw what might be.

Perhaps the next time we see a person who is lost, broken and seemingly without any merit we might imagine what potential they might have if only they could be restored.

As a Christian Pastor I firmly believe God has a desire to see all persons fully restored, He sees beyond the brokenness and desires that each of

us is able to reach our full potential. Jesus said; "I have come that they may have life, and have it to the full." During my lifetime I have come across numbers of people who had been written off, until someone saw their potential and took the time and effort to see them restored, eventually becoming useful members of our community.

Many of us would have watched the movie, "The Blind Side" starring Sandra Bullock which is based on a true story, how someone with compassion and vision took a young man from the wrong side of town and offered him a chance, a chance that transformed his life.

Struggling with life, feeling alone, need someone to talk to - Callala Community Church welcomes all, or if you would like to further talk about this or other issues; don't hesitate to call me.

Pastor Kevin Kettlewell
0437 338 739



**Professional design solutions
for your business**

**website design • graphic design
logo design • printing**

0414 785 776

www.scottmorgan.com.au

Callala Anglican Church

Home and family

A soldier who was finally coming home having fighting in Vietnam, called his parents and said "mum dad I'm coming home, but I have a favor to ask. I have a friend I'd like him to bring him home with me. Sure they replied we'd love to meet him. "There is something you should know" the son continued " he was hurt badly fighting . He stepped on a land mine and lost an arm and a leg. He has nowhere else to go and I want him to live with us."

I'm sorry to hear that, son maybe we can help him find somewhere to live" they replied. NO I want him to live with us"

Son said the father, you don't know what you are asking us, someone with such disabilities would be a terrible burden on us. We have our own lives to live, and we can't let something like this interfere with our lives. I think you should just come home and forget about this guy. He'll find a way to live on his own.

At this point the son hung up. The parents heard nothing more from him and a few days later they received a call from the police, their son had died after falling from a building. The police believed it was suicide

The grief stricken parents flew out to receive their son's body to bring him home and were taken

straight to the mortuary where his body was. They recognized him, but what they didn't know their son had only one arm and one leg also.

Like this soldier many of us in times of trouble find a need to return to our home base, to be surrounded by those we know, love and trust. But often we don't want to put others out and we try manage.

There are also times when some move away from their faith in times of trouble and when we are really down. The thoughts of home, loved ones, a peaceful church or a special place can make us rethink what are true values in life are.

So what then should a home be like ??

We know that home is family human love and interaction, Home's come and go, but it is home if family members can grow and be comfortable, understand one another patient and accepting, accepting for who they are, loving unconditionally. Home has a strong sense of community.

Mum, dad won't always be there but children siblings aunts uncles cousin and most of all the family of God. Where people give support and offer the love of Jesus. The most permanent home we will ever have is our eternal home in heaven. Jesus who was raised made the promise "I am with you always" Matthew 28:20, and from John 14:23 Those who love me will keep my word, and my Father will love them, and we will come to them and make our home with them

Rev. Sue Fisher

Anglican Churches

of Culburra Beach | Callala | Currarong

Callala - Church Service - 5pm Sunday

All Welcome | Kids Church

St Marks, 2 Hunter Street, CALLALA BAY

Caterpillar's Play Group - 9:30am Friday @ Culburra Beach Anglican

Kids Club - 3-4:30pm Friday @ Callala Anglican

289 (Youth) - 5-7pm Friday @ Callala Anglican

For more information: Rev. Paul McPhail

m. 0414 616 860 e. culburra.anglican@gmail.com

www.culburraanglican.org.au

CALLALA BUSHCARE GROUP

Lesley Oliver

Bushcare sessions over the past 2 months, when not interrupted by rain, have focussed on removing Bitou Bush from the dunes along Callala Beach, and the bushland behind Queen Mary St; as well as weeding the Bushland Reserve along Lackersteen St, Callala Bay. In addition to the usual big three - Senna, Lantana, and Asparagus Fern, we have found increasing numbers of passionfruit vine in the Reserve. Passionfruit is a popular inclusion in local vegetable gardens, but when the fruit is taken by birds or possums, the seeds are carried into surrounding bushland and the vines rapidly dominate indigenous species. We ask that passionfruit growers keep an eye on their vines and harvest all fruits as they ripen.



Neil and Bryan attacking some Passionfruit vines

Winter rains and mild weather have also produced a great crop of spring wildflowers. In the dunes, the Coastal Tea-tree (*Leptospermum laevigatum*) is covered in blossoms and attended by scores of appreciative bees. Along our creeks, the Swamp Oak trees (*Casuarina glauca*) are adorned with the beautiful scented flowers of the Bridal Veil Orchid (*Dendrobium teretifolium*). So don't forget to look up and breathe in.

While many other local species produce white or cream flowers at this time of year, such as the Clematis vine, Wedding Bush, and Two-veined Wattle, others produce a riot of colour. Anyone driving along Forest Road this month can't miss the bright yellow Parrot Peas (*Pultenaea villosa*) along the verges. This graceful weeping shrub to 2m by 3m, with its dense flowering, makes a spectacular garden specimen. Another colourful member of the pea flower family is the False Sarsaparilla, or Purple Coral Pea (*Hardenbergia violacea*). Also known as the Happy Wanderer,



Coastal Tea-tree

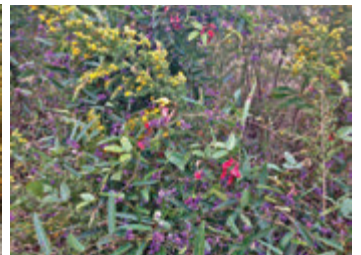


Bridal Veil Orchid on Swamp Oak

this purple flowered vine is common in surrounding bushland, and is already, and deservedly, a popular garden specimen.



Parrot Pea



Purple Coral Pea & Dusky Coral Pea

The Callala Bushcare Group has sessions every Tuesday morning between 8 and 10 am at a variety of locations in Callala Bay, Callala Beach and Myola.

If you would like to join us please contact:

Bryan Lenne PH: 4446 4157

scribblybark@gmail.com

BE IN HARMONY

Harmony Meditation Group & Qigong has been meeting at Callala bay on a Friday morning at 10am for over 14 years. NO fees, NOT a religion, NOT a psychotherapy group, NO obligation to attend weekly ~ just when you want to.

Relax and learn how to live IN HARMONY with yourself and your world.

RING JOHN OR JEANNIE ON: 4446 5902

or come to
59 BOORAWINE TERRACE
10am Friday



The Hon

Shelley Hancock MP

Member for South Coast

Speaker of the NSW Legislative Assembly

“Please come in and see me -
It will be a pleasure to help”

57 Plunkett Street, Nowra
PO Box 1426, Nowra NSW 2541

Ph: (02) 4421 0222

Fax: (02) 4422 1180

Email: southcoast@parliament.nsw.gov.au



WINNER OF THE CALLALA BUSINESS OF THE YEAR AWARD 2016

Callala Bay Pharmacy

2/55 Emmett Street, Callala Bay 2540 4446 4251

Hours: Mon-Fri 9am-5:30pm; Sat: 9am-12:30pm

Friendly, Professional Service

Diabetes Australia Supplies

Baby Weighing • Gift Lines

FREE delivery to Callala Beach and Callala Bay



E & S Painting Services

- Interior & Exterior Painting
- Friendly Local Service
- Excellent Rates
- Quality Assured

M: 0422 560 696 H: 4446 5056

Graham Worts

Things you should never do after snake bites:

- NEVER try and catch, chase or kill the snake, as this may lead to another bite.
- NEVER give alcohol, tea, stimulants, food or medications without medical advice
- NEVER wash the wound, apply hot or cold packs, cut the wound, use ligatures or tourniquets, apply electric shocks and do not suck the wound or use suction from any device.
- NEVER allow the patient to walk or run after a snake bite
- NEVER remove or loosen the pressure immobilization bandages unless advised to do so by medical personnel
- NEVER ignore the urgency of obtaining medical assistance in favour of reliance on traditional medicines or home remedies

ALWAYS SEEK MEDICAL ATTENTION AFTER A SNAKE BITE

Things you should do after snake bites

- RETREAT to a safe distance away from the snake, if necessary
- CALM the patient, lay them down and keep them still. The recovery position is the best way to help protect their airway and breathing while you wait for an ambulance or medical assistance. Protect them from the elements (rain, sunshine, cold etc)
- REMOVE rings, bracelets, and any constrictive objects from the bitten limb, so that if swelling occurs these do not cause an increased risk of serious harm due to restricted blood flow
- REMAIN with the person who has been bitten at all times until help arrives.
- MARK the site of the bite by using a pen to circle the area of the bandage over the bite site

from the AUSTRALIAN VENOM RESEARCH UNIT



firstnational
REAL ESTATE

Callala

At Callala First National you'll find a team of professionals to handle all of your real estate needs. We have been serving the Callala community for over ten years and continue to strive to provide a service above and beyond our client's expectations.

Address

58 Boorawine Tce
Callala Bay
NSW 2540

Contact

P 4446 4313

F 4446 4311

E info@callalafirstnational.com.au

W www.callalafirstnational.com.au



QUALITY ASSURANCE
SYSTEM ISO 9001



BRUMBIES ROUNDUP

The 2016 Winter Football Season has finished with the Callala Brumbies Ladies team not only finishing in first place during the regular season but also vanquishing all before them to wrap up the Shoalhaven 2nd Division 1st Grade Grand Final with an emphatic 3 goals to nil victory over Shoalhaven United. Congratulations to the Ladies and their coach Jarrod on the grand final win and a season well played.

With the 2016 Winter Season now finished we can start to look forward to the start of the Callala Summer Football Season. The Summer Season is run at the Emmett Street oval on Friday nights for anyone over 16yrs age, with the focus of all games about introducing people to soccer and encouraging everyone, no matter what skill level, to come along and have some fun. If you are interested in entering a team of friends for a bit of a run, followed by some social interaction after the games, please contact Brad Scotcher for more details and registration information.

Our long awaited fence to enclose the playing field and separate the drain along the western and southern edges will be constructed during October (weather permitting). We will be looking for volunteers to help out with this work as we have around 70 panels to dig holes for and set up, if you would like to help please contact the club President Andy Coppin, or club Committee member Luke Freeman, and let them know.

We are also looking at having an extension added to the rear (western side) of the existing change rooms. This work has been proposed through Shoalhaven Council in conjunction with the Callala Community Hall Committee to try to create more storage room for the Community Hall regular users with a small section of 3mtrs x 3mtrs of this suggested extension being offered to the Callala Soccer Club for storage use of our clubs training equipment.

The Callala Brumbies Junior/Senior Presentations and AGM for the 2016 season have been held. We would like to thank Club Callala for the use of the auditorium and back BBQ area and the assistance offered by the staff in making these events a fun day for all involved. I would also like to take this opportunity to welcome all the new committee members who have volunteered their time to help in running the Callala Brumbies for the 2016/17 season. Unfortunately we are still looking for people to take on the roles of the Junior Registers. These are important roles within the club and are positions that will make organising our Juniors for next season nearly impossible if they are not filled. If you are interested in either helping our U/6 through to U/9 or U/10 through to U/14 (Youth) by taking on the role of Junior co-ordinator for either age groups please contact Club President Andy Coppin or our New Vice President Natalie Holbrow to express your interest.

Please contact Brad, Andy, Luke or Natalie via the Callala Brumbies Facebook page.

I would like to thank our Club sponsors, Callala IGA, Club Callala, Callala Butchery, and Andrew Armstrong Electrical for their continued support throughout both our Winter and Summer seasons. Our club sponsors will also be involved in the Community Festival for the renaming day of Club Callala on 8 & 9 October.

We hope to see you down there to support our local sponsors.

prizes
to be
won



food
specials

COMMUNITY club callala FESTIVAL

give
aways
and
raffles



**SATURDAY & SUNDAY
8-9 OCTOBER 2016**

CLUB CALLALA

43 CALLALA BEACH RD, CALLALA BEACH, NSW



See venue for details



ARMSTRONG
CONTRACTING PTY LTD

CONTACT
Robert Daniels
0414 011 089

Ph.4446 6632

Specialising in
WATERPROOFING

- BATHROOMS
- BALCONIES
- PLANTER BOXES
- ROOFING

JOINT SEALING

- FIRE RATED
- PANEL JOINTS
- SAW CUTS
- FLOOR JOINTS

WATERPROOFING LIC.NO. 163162C
MASTER BUILDERS ASSOCIATION
MEMBERSHIP NO. 18491909

ADVERTISEMENT



ANN SUDMALIS

Liberal for Gilmore

*Creating more local opportunities,
a healthier community and
safer local roads.*



Authorised by Ann Sudmalis, 59 Junction Street, Nowra NSW 2541.

59 Junction Street (PO Box 1009), Nowra NSW 2541

W: www.annsudmalis.com.au

E: ann.sudmalis.mp@aph.gov.au

P: (02) 4423 1782

Dr John C Wright B.V.Sc.

CULBURRA VETERINARY CLINIC

7 Weston Street, Culburra Beach

9am-11am weekdays

4-6pm Mon, Tue, Thurs

4-5pm Wed, Fri

10am-12pm Sat

CALLALA VETERINARY Consulting Room

22 Emmett Street Callala Bay

1-3pm weekdays by appointment

Please phone: 4447 3851 for appointments, enquiries or after hour calls

Callala Community Church

... following Jesus

Sunday Worship 9am

at the Callala Community Centre
Emmett Street, Callala Bay

Wednesday Home Prayer Meeting 7.00pm

Enquiries phone Pastor Kevin Kettlewell 0437 338 739

FREE

Pre-Loved Clothing & Book Stall

First Saturday of the Month
at the

Callala Community Centre

9.30am to 12am

Clothes in good condition can be dropped off at the stall (on the day only). If clothing can be delivered by 10am; this will allow them to be displayed.

NEW COUNCIL TEAM FOR THE SHOALHAVEN

Shoalhaven City Council is excited to share the results of the successful candidates for each Ward who will sit as the new City Councillors for the next four year period. Results were released on Saturday morning when the election count was finalised.

Successful elected candidates for each Ward include:

Mayor

Amanda Findley

Ward 1

Andrew Guile
John Wells
Nina Cheyne
Annette Alldrick

Ward 2

Greg Watson
Jo Gash
John Levett
Mitchell Pakes

Ward 3

Mark Kitchener
Patricia White
Bob Proudfoot
Kaye Gartner

The new team includes six new Councillors.

General Manager Russ Pigg said he was looking forward to working with the new council to continue providing the excellent services across the City.

“The new council will no doubt have some changes in priority and policy and our staff team will be ready to respond & implement the council’s new direction and decisions” Mr Pigg said.

Intensive induction briefings will be held with councillors over the next two weeks to enable our Directors and other key staff to bring the new councillors up to speed on many of the current issues facing Council.” Mr Pigg said.

The first Ordinary Meeting for the new Councillors will be held on Tuesday, 4 October 2016 in the Council Chambers.



Council’s General Manager Russ Pigg with the new Mayor Amanda Findley.

TRAVEL NEWS

The Kimberley – Cruising on the Oceanic Discoverer

The Kimberley is truly a special place located in the North West of Australia and covers more the 400,000 square kilometres. This is an area three times larger than England and is acknowledged as one of the world's last and possible most beautiful wilderness areas.



I was lucky to travel from Darwin to Broome through the Kimberley for 10 days on Coral Princess Oceanic Discoverer and it was one of the most amazing holidays I have ever had. There really is no better way to experience the sites, history, wildlife and culture of the Kimberley than by small ship sailing.



The Oceanic Discoverer was built in 2005 and only takes a maximum of 70 people. She is beautiful and so comfortable with all on suite rooms, large windows and comfortable beds. She also has a number of outdoor areas to admire the amazing scenery and the food was fabulous. The staff are all Australian and included in your cruise are guest lecturers whom accompany you each day and explain the region's landscapes, history and culture which is fantastic. Without their knowledge the trip would not have been so amazing.

Each day we had a morning and afternoon excursion and even a few night excursions to spot crocodiles plus an amazing beach BBQ to view the incredible Kimberley sunsets. These excursions are conducted on the purpose built X-plorer which is a flat bottom boat that you board from the back deck and is lowered into the water and this took us to the most amazing places in the Kimberley. Even if you are not that mobile this boat allows you to participate in most daily excursions.

Each day we were able to follow the footsteps of some of the early explorers such as Phillip Parker King who first charted this spectacular coastline almost 200 years ago.

We travelled down the King George River just as he did to view the 80 meter twin falls, cruised right up to the King Cascades Falls, travelled through the Horizontal Falls in a zodiac. An optional extra was to fly in a helicopter over the Mitchell Plateau and falls and land at the top for a walk along the rim.

One of the highlights for me was landing at Bigge Island seeing the mysterious Bradshaw Art which is some of the oldest known Aboriginal Art and having it explained by an expert. It was magically seeing this art in such a remote area and in wonderful condition. This art is only accessible by boat.



The other was witnessing the rise out of the ocean of Montgomery Reef. We arrived in the morning and all you could see was water but within half an hour the reef started to rise out of the ocean as the tide changed and the waterfalls coming off the reef were amazing. The bird life was beautiful as they hunted for fish and one section between two parts of the reef was full of turtles feeding.

We woke up every morning ready for a new adventure and we were never disappointed. Each day we discovered a new part of the Kimberley in the way of rivers, icons, Aboriginal history, amazing wildlife and rock formations. Then at the end of each day we had a recap of what we had seen including a slide presentation from our lecturers, a chance to ask questions and a brief on the following day. Then it was off to a fantastic dinner and to talk to other guests about what a wonderful day we all had just had.

I could not recommend this trip more highly and it really is a must do at some stage of your life as the Kimberley is amazing, untouched and so rich in Australian history.

Shayne Tiplady
MTA Travel





CALLALA BAY COMMUNITY ASSOCIATION

Community Consultative Body to Shoalhaven Council for Callala Bay ABN 6803 198 0561

www.callalabaycommunityassociation.com

PO Box 14, Callala Bay 2540



Wants YOU to join or renew your membership NOW

Membership fees can be paid at any meeting, or a cheque can be sent to: -

Treasurer, CALLALA BAY COMMUNITY ASSOCIATION

PO Box 14, Callala Bay NSW 2540

Please make cheque payable to: - Callala Bay Community Association

Meetings are held on the second Wednesday of every month,
Callala Community Centre, Emmett St, Callala Bay at 7.30pm

Name: _____ Birth Month: _____

Name: _____ Birth Month: _____

Address: _____

Telephone: _____

E-mail: _____

Are you happy to receive important information via email? **Y / N**

Would you prefer your Monthly Newsletter delivered or mailed? _____

(Please note that a postage charge will be incurred for members living outside of Callala Bay)

I enclose/attach herewith \$5 annual membership fee (per household -2 adults) OR
\$4 per year for pensioners (per household where both members are pensioners).

COMMUNITY CONTACTS

Emergency Police Fire Ambulance – **000**
Nowra Police Local Area Command – **4421 9699**
Crime Stoppers – **1800 333 000** (anonymous reporting)
Police Assistance line – **131 444** (non-emergencies)

State Emergency Service – **132 500**
Jervis Bay Marine Park – **4441 7752**

Callala Doctor's Surgery – **4446 5350**

Shoalhaven City Council
General enquiries, business hours – **4429 3111**
Emergencies and after hours – **4421 3100**

Justices of the Peace
Daniels, Nancy – **4446 6817**
Duncan, Howard – **4446 6535**
Garry, Rexeen(Rikki) – **4446 6649**
Hannan, Robyn – **4446 4428**
Lower, Jill & Graham – **4446 6281**
McMaugh, Dallas – **0400 189 875**
Taylor, Lorraine – **4446 5117**
Ward, Noel – **4446 6800**

Culburra & District Garden Club
Every 3rd Saturday of the month at 1.30pm at the Banksia Hall Community Hall,
Fred Evans Lane, Culburra Beach (IRT entry) For more details contact Doris
Carpenter - **4446 5631**

Culburra & Districts Community Health Service
Visit the Op Shop and pick up a bargain! Proceeds help maintain the Medical Bus
that transfers people to Nowra for medical appointments from Greenwell Point,
Culburra Beach, Callala Bay & Beach, Currarong and Myola. Please contact
Culburra Pharmacy on **4447 2382** to arrange transport.

If you have good saleable furniture to donate, contact Jim on **4446 6733**

DISCLAIMER

The Publisher, known as Callala Bay Community Association Incorporated, does not accept any responsibility or liability in any way whatsoever with regard to any of the paying advertisers contained in this newsletter. Additionally the views and comments of all reports submitted are the responsibility of the person/organisations submitting same, including those from SCC (Shoalhaven City Council), which are usually copied verbatim from correspondence and are included for your information. The reports do not necessarily reflect the views of the Publisher.

AS LOCAL AS

A PADDLE
ON JERVIS BAY

AS STRONG AS

5 OFFICES
WORKING FOR YOU



AS LOCAL AS

THE SURF AT
CULBURRA BEACH

AS STRONG AS

5 OFFICES
WORKING FOR YOU



Ray White.

We have purchasers eager to buy in Callala, Culburra Beach, Orient Point and Currarong today.

Curious to see what your property is worth? **Get in touch.**

Ray White Callala Bay 02 4446 5799

Ray White Culburra Beach 02 4447 3169

raywhiteculburrabeach.com.au