

CENSUS 2016



The Census of Population and Housing (Census) is Australia's largest statistical collection undertaken by the Australian Bureau of Statistics (ABS). For more than 100 years, the Census has provided a snapshot of Australia, showing how our nation has changed over time, allowing us to plan for the future.

The next Census is on August 9. It's a moment for everyone to play a role in shaping the future of Australia.

The aim of the Census is to accurately collect data on the key characteristics of people in Australia on Census night and the dwellings in which they live. In 2016, the Census will count close to 10 million dwellings and approximately 24 million people, the largest number counted to date.

The 2016 Census will be Australia's first predominately digital Census. From August 1 households will receive a letter with a unique Census Login.

Every household must use it to complete the Census online, or follow the directions to order a paper form. In some locations, households will receive a paper form upfront, with the option to complete it online.

The information you provide in the Census helps estimate Australia's population, which is used to distribute government funds and plan services for your community - housing, transport, education, industry, hospitals and the environment. Census data is also used by individuals and organisations in the public and private sectors to make informed decisions on policy and planning issues that impact the lives of all Australians.

Australia has a long and proud history of Census taking. Since the first national Census in 1911, Census data has played an important role in charting Australia's history and shaping its future.

(Courtesy ABS)

WHAT'S ON? @ THE PROGRESS HALL

BOOKINGS JOANNE MULLER 4446 4313

| | | | | |
|-----------------|-----------------|--|-------------------|---------------------|
| TUESDAY | 10am - 12pm | CRAFT | Yvonne Fowler | 446 6280 |
| TUESDAY | 2:30pm - 4:30pm | FOLK DANCE | Maureen Petherick | 4446 6550 |
| THURSDAY | 6pm - 7:30pm | YOGA Beginners welcome Mats supplied www.roamingyogis.com.au | Ann Smallwood | 0405 102 234 |
| FRIDAY | 3:30pm - 5pm | TENNIS LESSONS | Garry O'Connor | 4464 1428 |

Tennis court bookings can be made at Callala First National Real Estate - 58 Boorawine Terrace, Callala Bay or call on 4446 4313. Please make your bookings during office hours so that the keys can be made available (*available in daylight hours only*).

The hall is also available for function bookings including weddings, birthdays, baby showers etc.

CALLALA COMMUNITY CENTRE

With it's newly landscaped gardens, in the heart of Callala - It's the place for your next function.

Facilities include:

**A fully equipped kitchen • An elevated stage and sound system • Off street parking
Catering and seating for 120 people • Flexible hire times and reasonable rates**

What's On Regularly at the Centre:

| | |
|--|---|
| Callala Christian Community Church | Sunday: 9 - 11am |
| Kids Korner - before and after school care | Mon-Fri: Call Jane on 4446 4218 |
| Friends of Callala - over 50's social group | Mon: 12pm - 3pm - 4446 6535 |
| Yoga email: info@samana.yoga | Tues: 6:15 - 7:30 pm and Thurs: 6.15 - 7.15 pm |
| Callala Bay Community Assn. monthly meeting | 2nd Wed of month: 7:30pm |
| For all bookings and enquiries call Jane: 4446 4218 - Emmett Street, Callala Bay (Opposite Bay Village Shops) | |

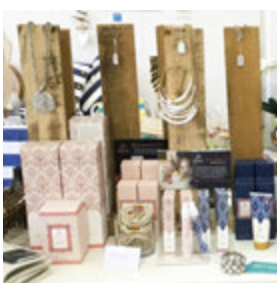
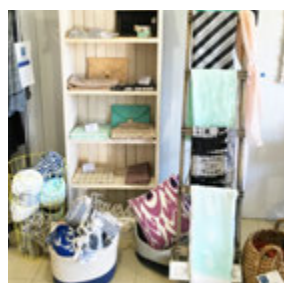
FASHION • JEWELLERY • GIFTS • HOMEWARES

Spoil yourself,
family & friends!

Shop 16/55 Emmett Street Callala Bay Shopping Centre
(next to The Sixth Sense café). **Ph. 0414 525 453**



facebook.com/barefootbeachcallalabay



CALLALA BAY NEWS

*A monthly newsletter of the
Callala Bay Community Association Inc.
(www.callalabaycommunityassociation.com)*



PRESIDENT & VICE PRESIDENT

Nominations Open!

TREASURER

Howard Duncan
4446 6535

SECRETARY/PUBLIC OFFICER

Margaret Duncan
4446 6535

MINUTES SECRETARY

Sandra McKenzie-Clark
4446 5280

COMMITTEE MEMBERS

Pauline Townsend
4446 6733

Jim Townsend
4446 6733

James Morris
4446 6037

John Green
4446 5902

Ray Plevy

EDITOR

Joan Lewis
4446 5368

lewisjr@bigpond.com

PO Box 14 Callala Bay 2540

LATE NEWS

The Callala Beach Facilities Management Committee will be holding their **AGM on 16th August 2016 at 6.30pm** at the Callala Beach Hall.

Barry Taylor, Secretary

Note from the Editor:

If you have an issue or concern that needs to be raised, why not send it to the Editor. This should be brief, to the point and with the intention of having it published.

With each monthly newsletter, we hope to bring you events and items of interest to keep the community informed and entertained.

Joan Lewis and Team CBCA

INDEX

| | |
|---------------------------------------|------------|
| Census 2016..... | Page 1 |
| Late News..... | Page 3 |
| CBCA Report | Page 5 |
| Bushcare..... | Pages 7/9 |
| Gardening Club..... | Page 11 |
| Men's Golf..... | Page 12/13 |
| School Happenings..... | Page 15 |
| Police | Page 17 |
| Callala's Beginnings..... | Page 18 |
| Christian Church/Fishing..... | Page 21 |
| Anglican Church..... | Page 22/23 |
| Women's Auxilliary Cent Auction.... | Page 25 |
| Tools Trash & Treasure | Page 26 |
| SCC Disability Incl. Action Plan..... | Page 27 |
| Club's Bus Timetable..... | Page 30 |
| Community Contacts..... | Page 31 |



Pottenger & McGhee Solicitors

Nowra & Huskisson

Conveyancing | Wills & Estates | Business Law | Leases

We look forward to meeting you and helping you with your legal needs.

Level 1, 25 Kinghorne Street, Nowra Phone 02 4421 6166
Level 1, 64-66 Owen Street, Huskisson Phone 02 4441 7973
Email: pbetts@potmac.com.au

If you can't come to us, we can come to you!

OUR COUNCILLORS



Mayor - Cllr Joanna Gash
M: 0427 160 170
Jo.Gash@shoalhaven.nsw.gov.au

Shoalhaven City Councillors welcome comments and information from the general public. They can be contacted on the numbers and email addresses below. For general enquiries phone 4429 3111

WARD ONE



Cllr Andrew Guile
M: 0412 287 706
andrew.guile@shoalhaven.nsw.gov.au



Cllr Lynnette Kearney
M: 0478 882 650
Lynne.Kearney@shoalhaven.nsw.gov.au



Cllr Jim McCrudden
M: 0478 882 684
jmccrudden@shoalhaven.net.au



Cllr John Wells
M: 0412 676 159
John.Wells@shoalhaven.nsw.gov.au

WARD TWO



Cllr Karen Anstiss
M: 0478 876 510
Karen.Anstiss@shoalhaven.nsw.gov.au



Cllr Clive Robertson
M: 0478 882 685
Clive.Robertson@shoalhaven.nsw.gov.au



Cllr Jemma Tribe
M: 0413 050 992
Jemma.Tribe@shoalhaven.nsw.gov.au



Cllr Greg Watson
M: 0412 210 979
watsong@shoalhaven.nsw.gov.au

WARD THREE



Cllr Amanda Findley
M: 0434 151 730
amanda.findley@shoalhaven.nsw.gov.au



Cllr Allan Baptist OAM
M: 0434 560 096
Allan.Baptist@shoalhaven.nsw.gov.au



Cllr Mark Kitchener
M: 0478 882 649
Mark.Kitchener@shoalhaven.nsw.gov.au



Cllr Patricia White
M: 0447 416 329
Patricia.White@shoalhaven.nsw.gov.au

CALLALA BAY COMMUNITY ASSOCIATION (CBCA) REPORT FOR AUGUST 2016

At the General Meeting on the 13th July, we were pleased to welcome newly re-elected member for Gilmore, Mrs Ann Sudmalis, the Mayor - Counsellor Mrs Jo Gash and Ward 2 Counsellor Mrs Jemma Tribe. Counsellor Gash announced she would be standing for the position of Mayor in the upcoming SCC Council Elections.

SCC wrote to us advising that the "NO STOPPING" signs in Chisholm St prohibiting parking in the peak school hours although discussed at the planning meetings - had not actually been approved. It was felt that the proximity of the footpath to the road presented some danger to children riding to and from school from passengers opening their car doors. We will write to Council to reconsider. *(SCC have replied "Council's Traffic Unit conducted a survey yesterday afternoon [Tuesday 19th July] in Chisholm St and in discussion with the School, Traffic Unit does not support any signage. No further action will be taken at this time.)*

Counsellors White and Tribe, have agreed to assist CBCA in the planning process for the construction of a viewing platform and stairs at the cliff face opposite Bay St. Currently surfers, divers and other users are causing a potential erosion problem as they access the reef, by using an informal track down the cliff face. It was discussed at the last SCC familiarity tour that a viewing platform and stairs would not only be a tourist drawcard but would also resolve safety issues.

The CBCA is slowly progressing the Uncle Noel Wellington indigenous pole project and is working with SCC to precisely identify the locations and obtain the necessary agreement from Jerringa Land Council, Aboriginal Heritage Impact Permits and D/A approval. It is also proposed to have information plaques explaining indigenous use of the land, local flora and fauna and a time line showing the creation of the Bay. We believe that cultural recognition combined with the Callala Beach Progress Association's installation of carved seats and other proposed art works will provide a unique tourist opportunity for the Bay to Myola Walk.

We will be hosting a "meet the candidates" opportunity to allow all ward two nominees to introduce themselves and outline their plans and policies.

Date, time and venue to be announced on our facebook page and web page site.

Concern was expressed at the poor result of the remediation carried out at the Sailing Club foreshore. The CBCA undertook an inspection of the site with Ms Isobel Ghatti from SCC and pointed out that many rocks had been washed along the beach, the sand cover over the rocks had been washed away, and as it now stood the Sailing Club would not be able to launch boats from the shed. Ms Ghatti agreed to have the situation reviewed as a matter of urgency.

Joe Kowal advised that drain between the sports field and houses adjacent to the Western side of Chisholm St was in need of work as water was not running away and it presented a mosquito breeding danger for users of the park and householders. CBCA has written to SCC re the issue and will follow it up if action is not taken.

The next General Meeting of the Callala Bay Community Association, will be held on Wednesday 10 August 2016 at the Callala Community Centre, Emmett Street, Callala Bay, commencing at 7:30pm.

Tea and coffee will be available from 7:15pm

MR MIKE SPARKLE BRIGHT

ABN: 50 534 685 256

Professional Window Cleaner



All Types of windows cleaned including Fly Screens, Window & Door Frames Tracks and Runners

We can offer our customers Solar Panel Cleaning (single story only)

Very Reliable • Free quotes

**Ring Mike on:
0406 467 026 or 02 4446 6684**

CALLALA RSL COUNTRY CLUB

Come in & check out our
latest refurbishments



MONDAY - FREE TRIVIA - 6:30PM START

GOLF COURSE

Open Everyday (02) 4446 5112
Information and Bookings
callalagolf@bigpond.com
Extensive TAB facilities

FRIDAY

Fitness Exercise
Class from 11am



RAFFLES

TUESDAY

FREE Meat Raffle - Every half hour from 4pm until
6.30pm - Get your FREE tickets at the Bar with
ANY purchase after 3pm.

THURSDAY

Bowlers Extensive Raffle from 6pm with great
prizes Lucky Member's Badge Draw

FRIDAY

Meat Mart Best value Friday night in town Meat
Tray prizes with value over \$1000 - Tickets on sale
6pm Draw commences approx 7pm

SATURDAY

Fisho's Raffle From 12 noon to 1.30pm

CALLALA BEACHSIDE BISTRO

Mon - Wed 11.30am open
Thurs - Friday 10.00am
Sat-Sun 8.00am

TUESDAY

Members Good Time Happy Hour
4pm to 5pm - All Drinks Discounted.
Darts - Comp & Social from 7pm

WEDNESDAY

NPL POKER - Only \$2 to Play
7PM Start - Ca\$h prizes and regional
tournament tickets to be won every week

THURSDAY

Bingo - Eyes down at 11am

BOWLS

Monday - Indoor starting @ 12pm

Tuesday - Womens bowls from 9.30am

Wednesday - Mens social bowls
12.30pm from 1pm

Thursday - Mixed Social Bowls -
Ring for details

Friday - Twilight Bowls from 4.30pm
\$5pp

Sunday - Social bowls from 1pm \$6,
Jackpot prizes

Ph 4446 5313

43 Callala Beach Rd, Callala
www.callalarslcountryclub.com.au



CALLALA BUSHCARE GROUP

Lesley Oliver

As we approach National Tree Day on the 31 July, it is a good time to consider their many benefits. Trees produce oxygen, filter the air, remove carbon from the atmosphere, stabilise soil, provide food and shelter for animals, beautify neighbourhoods and, when responsibly harvested, provide the only major building material that helps address climate change. In recent years, much peer-reviewed research has also pointed to the ways that trees, or nature in general, can enhance our health and well-being. For example,

- Just 10 minutes' relaxing outside is enough to significantly reduce blood pressure.
- Time in nature reduces a person's chance of developing a range of diseases, including diabetes by 43%, cardiovascular disease and stroke by 37% and depression by 25%.
- Nature induces positive feelings through a number of physiological mechanisms, including activating the brain's dopamine reward system.
- Students who take part in outdoor learning programs perform better in reading, writing, maths and science, with 77% of teachers reporting student improvement in standardised tests.
- A strong connection to nature makes people more likely to feel passionate about relationships with their friends and family.

For the full report compiled by Planet Ark, see <http://treeday.planetark.org/documents/doc-1419-full-report-final-2016-07-05.pdf>

The therapeutic role of nature has been documented by classical Chinese and Greek civilizations, and more recently, the Japanese have coined a new term "Shinrin Yoku" (or "forest bathing") for the preventative and healing benefits of time spent in nature. In the words of the renowned philosopher Henry David Thoreau, 'We need the tonic of wilderness'. With an abundance of walkways and trails through surrounding natural environments in Myola, Callala Beach and Callala Bay, there is no reason for our residents to not enjoy these cost-free aids to our health and well-being.

Bushcare volunteers (bursting with health and vigour

due to our weekly dose of nature) have recently completed follow-up weeding at the Bangalay Sand Forest on the eastern side of Callala Creek. There was enough re-growth of the usual suspects (Senna, Lantana, and Asparagus Fern) to keep us busy for over a month, but compared to the time taken for follow-up in past years, it was another gratifying experience. It was particularly satisfying to see the swathe of eucalyptus and acacia seedlings thriving in the understorey.

It is often hard to describe the changes which have occurred in the bush since our primary assault on weeds in the area, and even harder to take before and after photographs, because weeds and desirable local plants are both green and often dense. However....



...these photos of the so-called dry lagoon show
(continued on page 9)

AMM Accounting & Associates

ABN: 34 919 202 132

Accountant & Registered Tax Agent

17 Years specialising in Individual, Business and Company Accounting

BAS & IAS Lodgements • Self Managed Super Funds • Company Incorporation
I can assist individuals and businesses who have outstanding lodgements or current ATO debts

PLEASE CALL FOR AN APPOINTMENT OR INITIAL ADVICE

Angela McCarthy MTMA, JP

PO Box 4085 Nowra East NSW 2541

Phone: 0409 421 755 or 4447 8068

Email: nowra@ammaccountingpicton.com.au or amconsultancytyld@bigpond.com (direct)

www.ammaccountingpicton.com.au



/ammaccountingnowra

Need a reliable Home Handyman?

Tiling Repairs — Painting — Gyprock Repairs— Timber Decks & more!

Ask about our affordable kitchen makeovers

FREE QUOTES

0427 899 417

Fully insured—over 30 yrs experience



Enrolment for children 2 to 5 yrs

Opened 8am – 4.30pm

University & TAFE trained teachers

‘School Readiness’ curriculum

Fee rebates available to eligible families

Awarded **‘Exceeding National Quality Standards’** by the NSW Department of Education and Communities.

For further information please call us on **4446 6089**

(Bushcare continued from page 7)

the changes from July 2007 after we had removed by hand the Senna and Lantana growing in the lower part of lagoon, and poisoned the Lantana dominating the bank of the lagoon; and July 2016 when the banks and surrounding area are now covered in the healthy re-growth of local species.

At Boorawine Creek, the new seedlings at Regan Close are establishing well with winter rains and their blanket of mulch, but the war continues against Paddy's Lucerne, and Cobbler's Pegs. Arum Lilies continue to proliferate, especially along the banks of the drain. Smaller plants can sometimes be dug out, but larger plants are exceptionally well-rooted, and need to be repeatedly cut and painted with poison. Much effort also goes into containing the perennial problem weeds, Japanese Honeysuckle and Asparagus Fern.



Regan Close seedlings Arum Lily seedlings

Asparagus Fern or Ground or Basket Asparagus (*Asparagus aethiopicus* L) is a recurring weed in all our bushcare sites, and one of Australia's most significant garden escapes. Spread by fruit-eating birds, Asparagus Fern can rapidly become the dominant ground cover and displace native plants, especially in shady places.

Asparagus Fern has long, arching, prickly stems up to 2m long, and small, creamy, clustered flowers in spring and summer. The fruits ripen to bright red containing a single, black, round seed. You can greatly assist the local bushcare effort by eliminating these plants from your garden. First remove and bag the seeds and fruit, and place in the garbage bin.

Then remove the entire crown of the underground stem with a sharp knife to prevent regrowth.



The Callala Bushcare Group has sessions every Tuesday morning between 8 and 10 am. If you would like to join us please contact:

Bryan Lenne PH: 4446 4157
scribblybark@gmail.com



The Point Gallery & Craft

OPEN: Fri-Mon 10am-4pm

All Art & Craft Locally Made

76b Greenwell Point Road



Tony & Natalie Dunstan

Ph: 4446 6544

18/55 Emmett Street
Callala Bay 2540

***"Your Local
Family, Country
Style Butcher"***



Yoga with Judith for a balanced life

Fun & Friendly Yoga classes
held in Callala Bay

For further information, see
www.yogawithjudith.com.au

or contact Judith on **0408 865 437**
or email judith@yogawithjudith.com.au

Lauren Sams

INTERNATIONALLY CERTIFIED MEDIUM

*"One of the best parts of my job is helping to bring
closure and healing to those who have lost loved ones"*

FULL DETAILS & REVIEWS: 

www.laurensamsmedium.com

CALLALA BAY & HUSKISSON



BOOKINGS:

0416 301 575



CALLALA GALLERY

15 Callala Beach Road, Callala Beach

All Artworks on display at the
Gallery are For Sale.

Paintings done on commission.

Callala Gallery on facebook

www.artclassesnowra.com

ART CLASSES

for beginner to advanced, for Adults and

Children. **In: Acrylics, Oils, watercolours,
drawing and Mixed Media**

School Holiday Workshops

Phone: 4446 5770 or email:

roslyn.chatham@bigpond.com

Borg Power Solutions Pty Ltd T/A



David Borg
ELECTRICAL
Electrical Lic 231840 C **& SOLAR**

Accredited Service Provider

- ◆ Grid Connect Metering
- ◆ Solar Power Installations
- ◆ New Electrical Work
- ◆ Hot Water Repairs

2 Cronin Place Callala Bay

Mobile: 0412 939 709

Phone: 4446 5996 Fax: 4446 6610

info@borgpowersolutions.com.au

www.borgpowersolutions.com.au

Torrens Embroidery

T: 4446 5368 - Joan

I can machine embroider designs on your
fabric or mine to produce a unique gift for
someone special or just for yourself.

Let me know your
thoughts/ideas
and we can create
together.

Email:

lewisjr@bigpond.com



CULBURRA BEACH & DISTRICTS GARDEN CLUB ROUNDUP

At our June meeting, President Sue introduced guest speaker Kerry Thompson –Natural Operations Officer with Shoalhaven City Council. Kerry is responsible for the management of bushland and foreshore reserves, bush walking tracks and management of the community nursery under council's care and control. Her talk centred mainly on the impact of alien plants on coastal areas. The guest speakers for July were Elaine and Edwin Weatherstone and their topic was succulents. Elaine brought in an array of succulents growing in a variety of containers. Succulents grow everywhere- they thrive with minimum fuss, flourish with little care and grow in small amounts of soil. Better still they require little moisture which makes them ideal for our Australian climate. One of the succulents that she spoke about was Euphorbia Milii(Crown of Thorns).

The Crown of Thorns plant is one of the rare succulents capable of blooming almost year- round. These plants are native to Madagascar and as the name implies, covered in thorns. These may not be your thing- you might not go for plants with sharp thorns but there are plenty of other Euphorbias such as the Poinsettia. Euphorbias enjoy a sunny or part shaded position in well drained moist soil . Propagate from cuttings in spring or summer but ensure that the succulent pieces dry out, callous over and completely stop bleeding before placing them in damp sand.

* But beware, wear thick gloves when handling the ones with thorns and watch out for the milky sap which can irritate your skin, eyes and mouth.

Our members are really getting into the spirit of contributing to the Display table with Camellias and Azaleas, in different shades of pink, taking centre stage at the June meeting. For July, members were asked to bring their favourite potted plant. We had the popular Euphorbias(Crown of Thorns), Crucifix Orchids, an African Violet, a Cyclamen, Cymbidium Orchids and Calathea orbifolia (the Prayer plant). Those who couldn't contribute a pot brought in displays of winter foliage and flowers.

July was a special month for us as we celebrated our 25th Birthday at the Nowra- Culburra Surf Lifesaving Club. The Garden Club was formed in 1991 and four members from that first inaugural meeting were able to celebrate with us including some who attended the earliest meetings. We had a wonderful afternoon mingling with guests while enjoying the view of the surf from the club.

We meet every 3rd Saturday of the month(except December and January) at the Banksia Senior Citizens Hall, IRT entrance, Culburra Beach at 1.30 pm starting time.

Theme for the Display table was to bring in a small vase with foliage or flowers. Members had to write how they acquired their vase. It was interesting to find that most came from other countries, one was dug up in a garden, another from a property, others were passed down from family and some were special mementoes.

We meet every 3rd Saturday of the month(except December and January) at the Banksia Senior Citizens Hall, IRT entrance, Culburra Beach at 1.30 pm starting time. Happy gardening and hope to see you at our next meeting.

Doris Carpenter (secretary) 4446 5631

CULBURRA BEACH



PRESCHOOL

4447 3838

2 to 5 years

**Sunshine Street
Culburra Beach**

EXTENDED HOURS - 8AM TO 6PM
www.cbpreschool.com.au

- ◆ Individualised early learning programme provided by University & Diploma trained staff.
- ◆ Morning & afternoon tea are provided **FREE**.
- ◆ Families can receive CCB (Child Care Benefit) PLUS the 50% Child Care Cash Rebate.
- ◆ Families that have a Health Care Card or receive 'Family Tax Benefit Part A' will pay as little as **\$16.50 per day** after receipt of 100% CCB plus the 50% cash rebate.
- ◆ Open 50 weeks of the year - visits welcome.

CALLALA MEN'S & VET'S GOLF CLUB NEWS

Bill Downton

July 2016

Tuesday Vets 21st June.. REYNOLDS ROMPS IN

Harold Reynolds won the Single Stableford Game



Harold Reynolds

with ease after submitting a healthy Score of 40 Points on a damp Course at Callala on Tuesday. His nearest rivals were Barry Whitlock & Charlie Crane, both coming in with 35 Points each. All players were required to play on the Wet

Weather Course which was a little damp but manageable after the large amount of recent rain.

Saturday Men's 25th June. Two Person Ambrose

The team of Jamie Reardon and Tony Pitt-Lancaster demonstrated that today they both had the skills and talent required to come home clear winners over a good field of competitors. Congratulations to Jamie and Tony for their excellent round of golf.



Jamie Reardon and Tony Pitt-Lancaster

Tuesday Vets 28th June. AGGREGATE AT CALLALA

The Team of Barry Jarman & Perry Cousins played well together to win the Aggregate Stableford Event

at Callala on Tuesday. Their combined Score of 67 Points was good enough to defeat the Runner Up Team of Doug Ingle & Harry Dowling who submitted a healthy Score of 66 Points.



Barry Jarman & Perry Cousins

JUNE 29 2016, LADIES GOLF, WITH VETS & MEN'S PLAYERS

Mixed Foursomes was the format event, hosted by Callala Ladies. The day's winners were Margaret Mills and Barry Whitlock. The second pair of runners-up, were Robyn Johnson and Graham Lewington. 3rd position were husband and wife team, Carmel and Bill Downton. A tasty lunch of chicken rolls with gravy and delicious cakes and slices were served by the committee at the conclusion of play and all agreed that more mixed events should be scheduled in the Callala Club's golf calendar in 2017.



1st, 3rd & 2nd winners

Saturday Men's 2nd July. Monthly Medal

"A" Grade and overall winner was Steve Monslave.

"B" Grade and 3rd was Doug Ingle.

"C" Grade and 2nd overall Bob Plunkett.

Tuesday Vet's 5th July. Monthly Medal -No report

Saturday Men's 16th July 2016

Finally, mother nature decided to give Callala a break from the deluge of rain over the last few weeks. Single stableford winner today was Vice Captain Graham Lewington. Runner up today was another impressive player, Harry Dowling Third across the line was President, Harold Reynolds



*Harry Dowling, Graham Lewington and
Harold Reynolds*



**Professional design solutions
for your business**

**website design • graphic design
logo design • printing**

0414 785 776

www.scottmorgan.com.au

CALLALA MEN'S VETERAN GOLFERS

Invite YOU to Come and Join US!

Play 18 holes of golf every Tuesday and join the Callala Vet's Golfers at Callala Golf Course, Callala Country Club, 43 Callala Beach Road, Callala Beach.

We have a 'Monthly Medal' round, followed by a tasty BBQ lunch. You will appreciate what we consider to be the most challenging 18 hole golf course on the South Coast. Fun for the novice golfer while also testing the low handicapper.

For all your golfing needs come and visit the fully equipped Golf Shop with the following facilities:

Golf Clubs, Balls and Accessories • Golf Club and Buggy and Cart Hire • Drinks and Sweets

Membership to join the Golf Club: Men & Ladies - \$200

Members: 18 holes: \$12 - includes entry in raffle and ball competition

Visitors: 9 holes: \$15 - 18 holes: \$20

Enquiries Please phone: 4446 5112

Prizes for the best scores plus a 'ball rundown'. There is the meat raffle with 4 draws at the presentation day. Whether you are a local or a visitor, if you have a current Australian Golf Link number and handicap, you are most welcome to join us on a Tuesday, including Ladies!

Males 55 years or over can join the Vet's. Ladies and visitors also play on the day. If you would like to join us for great golf and friendly company, contact the Golf Shop on: **4446 5112** between 8am and 5pm and arrange a time slot between 7:30-9:30am.

Join a welcoming and cheerful group for a good day of golf and friendship!

NEW!

SENIORS MOBILE OFFER

Includes an easy-to-use mobile phone

\$17 a month

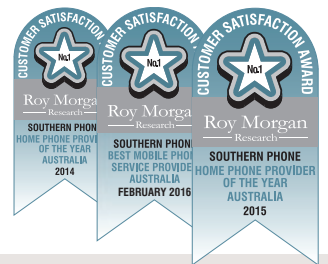
\$15 a month + \$2 Handset Fee

■ \$50 Talk & Text

Minimum cost over 24 months is \$408.

Southern Phone's Seniors mobile phone plan includes:

- Easy-to-use Onix Mobile Phone
- \$50 Talk & Text Credit
- Regional Call Centre
- Award Winning Customer Service



Onix Big Button Mobile Phone

The Onix Big Button mobile phone is perfect for people after a simple mobile phone.

- Large Buttons ■ Big Text
- 3G ■ SOS Emergency Button
- Simple Flip Design ■ Easy to answer and end calls

The cost of a 2 minute call is \$2.38, an SMS is 25 cents and data is 5 cents per MB with a minimum charge of 25 cents.

CALL
1800 720 326

southernphone
looking after regional Australia

Things you should know. Each month you'll pay a \$15 plan fee + \$2 handset fee and receive \$50 for calls to landlines and mobiles, SMS, MMS and voicemail. Once the credit limit is reached normal charges apply. Calls and texts to premium numbers, international calls and roaming, directory assistance, mobile commerce transactions and mobile internet are not included in your call credit. There is no included data in the plan. The cost of a 2 minute call is \$2.38, an SMS is 25 cents and data is 5 cents per MB with a minimum charge of 25 cents. An early exit fee applies if the mobile service is not connected for the full 24 month contract period. This is \$12 times the months left on the contract. Southern Phone uses part of Telstra's 3G mobile network. While stocks last. Offers may be changed at any time without notice. To approved customers only. Offers expire December 31, 2016. For full details see www.southernphone.com.au

SCHOOL HAPPENINGS

WELCOME TO TERM THREE

Our calendar for this term is filling up so we expect that it will be another busy term.

NAIDOC WEEK

Our school celebrates this special week during the first week back at school. We have our official opening with flag-raising on Tuesday and a show for all children based around Science with an Aboriginal perspective. A special sausage sizzle lunch has been organised by the Little Black Duck team.

On Wednesday, we have our Doing Things Together Day when children in vertical groups participate in activities organised by teachers. These activities are designed to strengthen knowledge and understanding around Aboriginal Cultures and Histories and Multicultural understandings.

On Thursday we have our official **NAIDOC** assembly followed by a cake cutting. All parents are welcome to attend this assembly and join the staff for refreshments in the library afterwards. On Friday, students are working on their NAIDOC theme posters which have commenced throughout the week. As well, students in their class groups will participate in Indigenous games as part of sport. This has been and will be a great week to foster close relationships for all people. I would like to thank all those involved in making this week such a significant one in our school calendar.

MULTICULTURAL PUBLIC SPEAKING

Congratulations to all our representatives at the Multicultural Public Speaking Competition held in Milton last term. They represented our school well and gave very polished performances. Malia Barrel won her event and is now competing in the Illawarra and South East Regional Final at Gwynneville Public School on August 30th. Congratulations to Malia. I know she will do her very best at this next level of competition.

EDUCATION WEEK

This is in Week 3, from August 1st – 5th. Our traditional Grandparents Day will be held on 4th August as part of this week. Also throughout the week and on Grandparents Day we will again be holding the Book Fair. I look forward to seeing all our older family members here on this day.

NETBALL

The next round of the PSSA Knockout is on Friday 22nd July against Sunshine Bay Public School. The game will be held at Ulladulla Netball Courts.

The NSW Netball Schools Cup next gala day will be held on August 4th. The Dolphins team will be travelling to Queanbeyan for this day.

GYMNASTICS

Gymnastics lessons will commence this term in Week 2. All students will receive a lesson delivered by professional instructors each week till Week 9. The costs for this are covered by the school through the RAM Location budget.

LIBRARY NEWS

BOOK FAIR—AUSTRALIAN STORY COUNTRY—Find your story at the Book Fair

Another fantastic Book Fair is coming to our school in Week 3. Join in the fun and help encourage your child's love of reading. The Book Fair offers a wide range of quality books and recent titles. Every book sold benefits our school, adding resources to our library and classrooms. Your support in ensuring the success of our Book Fair is appreciated.

Tuesday 2nd August and Wednesday 3rd August
Students will be able to purchase books before school (8:30am—9am) or during 1st break.

Thursday 4th August—GRANDPARENTS DAY

The Book Fair is open from 8:30am—2pm for visitors and accompanied students.

Have a great week!

Therese Aston
Principal



JOHNSTON TOBIN

Solicitors

4421 5344

For all your Legal and Conveyancing needs

Criminal Law • Family Law • Wills & Estates • Property Matters
Conveyancing • Commercial Law • Litigation • All Court Matters

74 Berry Street, Nowra NSW 2541



GP JAMES CLEANING SERVICES
The Royal Treatment

Fast Reliable & Trustworthy

*Specialist in Holiday home cleaning

* Linen Hire and Laundry Service

*Domestic and Office Cleans

Bond and Rental Cleans

Fully Insured



0402576859 0244465000 gpjamescleaning@gmail.com



Nowra & Coast
REAL ESTATE P/L

"Where Experience Makes The Difference"

What is your property worth!

Thinking of selling or renting your property ?

Free Market Appraisal

- * Deal directly with the principal
- * We operate 7 days and public holidays
- * Pensioner discounts
- * Honest, personal, professional service
- * Lower overheads means lower fees

Contact Vicki On 0427 210 066 Or 44 472 920

A Proven Track Record With 23 Years Experience

5 Otranto Avenue Orient Point NSW

Web: www.nowracoastrealestate.com.au

Email: vicki@nowracoastrealestate.com.au



POLICE STUFF BY SHOALHAVEN CRIME PREVENTION OFFICER SENIOR CONSTABLE JORY

ON THE BEAT

I was driving along Crown Street in Sydney on Tuesday; my daughter was in the front passenger seat fiddling with her communications device when suddenly she screamed in delight. "What happened?" I said. "There's a Pokemon outside the car" she replied.

At this point the only thing's outside the car were more cars, I could not see any Pokemon dead or alive out there. It was then explained to me what the Pokemon Go App was all about. It was 10 minutes of my life that would not be returned to me and at my age every 10 minutes is a blessing. However I forgot what I was told a short time later.

I was reminded again about the strange Pokemon happenings this morning at work. There had been strange things happening overnight. People were being located in weird areas of the CBD and other areas around Nowra chasing Pokemons. I am sure that on face value it is a harmless past time, however there is some danger to it. Please do not wander around alone at night chasing Pokemons. Be aware of your surroundings and stay safe. Remember when you are crossing the road looking at your phone that the Pokemon is not real but the car approaching at 50kph is. Don't go chasing Pokemons in your car whilst using the phone. Pokemons don't bleed, you do.

Finally to anyone who has a warrant or is wanted by the Police. We have special Pokemons in the Custody Suite at the Nowra Police Station. Just come on in and we will be happy to supply you with pokemons that look like hand cuffs and prison clothes and you can look for as many pokemons as you like in one of our cells

As always, in case of emergency, call (000)

Non Emergencies contact Police Link on **131444** or your local Police

To provide anonymous information call crime stoppers on **1800 333 000**

Domestic and Family Violence Info visit:
www.police.nsw.gov.au

Shoalhaven Domestic Violence Officers.
44219666 or 44219665

Email shoaldvlo@police.nsw.gov.au

Don't forget. Cops are tops.

CULBURRA & DISTRICT COMMUNITY HEALTH SERVICE

We maintain the Op Shop, Ambulance Station, Medical Centre and Medical Bus.

Contact Culburra Pharmacy on
4447 2382 to book
(travel is by donation)

Saleable furniture can be collected
by phoning Jim on:
4446 6733 or 0419 538 963

Drivers phone Neil on:
4447 4713

CALLALA BAY'S BEGINNINGS – AN EARLY RESIDENT'S PERSPECTIVE

EPISODE 1

In 1946, Richard and Bess Mitchell with their three year old son Graham, one year old daughter Lorraine as well as Nan Mary McMcAdam (Richard's mother) moved to Callala Point in a second hand hearse that was a bit unreliable at times. It nearly didn't survive the journey down Bulli Pass! The Mitchell's built their first house at 103 Murray Street, with their next house built at 56 Boorawine Terrace. They were joined in Callala Bay by Bess's parents - Alex and Elizabeth McNish and their son Alex who moved into the Murray Street property.

The walls of the houses were lined with tar paper which was painted, and it was one of Bess's jobs to dig the holes to bury the contents of the 'thunder box'. As town water wasn't connected until 1985, water had to be carted by boat from the Swinbank's residence on the south side of Wowly Creek, if you didn't have a rain water tank installed. Their residence - three cabins and a number of water tanks (previously 500 gallon petrol tanks), were located on the waterfront, about where the Monarch Place units are now built. Swinbanks brought in groceries from Nowra as well as the milk.

Washing was done outdoors in a 44 gallon drum acting as a copper, with a clothes line strung between the trees. Bathing was in a 3 feet round galvanised tub, in front of the kitchen wood burning Bega stove - which provided the hot water.

The vegetable garden and chooks which were the order of the day provided fresh produce, eggs and a baked chicken dinner at times. Wowly Creek was great when the prawns were "on". Children thought nothing of shoving their hands into the rock crevices to pull out octopus, there

was no mention of the blue ring octopus. There was a tremendous abundance of food, especially oysters. When the wind and sea conditions were right there were lots of Tasmanian scallops. Unfortunately when the trawlers came in and scoured the ocean floor, it wrecked the supply. These were the days when fish were abundant in Callala Bay - for handline and netting by the locals as well as the Culburra Aboriginals. Fishermen also netted Port Jackson sharks by the boatload for their liver from which an oil was produced. Many shark carcasses were buried on the beach near the present boat ramp, but those that were buried in the vegetable garden produced abundant crops of tomatoes. Blackberries grew wild on the cliff face behind the current Sailing Club, and were much appreciated when in season, eaten either in a pie or just in a bowl with fresh milk and sprinkled with sugar.

Wild horses roamed the area, and the locals took to feeding them bread. Many times these horses had injuries and the local residents would take up collections to get antibiotic powder which would then be put into sandwiches and fed to the injured animal. Many outsiders tried to come in to try and round up the horses to take them for rodeo work and then to the knackeries, but the locals maintained a vigilante watch to protect the animals. Sadly, as the community grew the remaining horses were caught and relocated down south.

(Episode 2 - next month)

(With grateful thanks to the Mitchell Family for historical material loaned to us)

THE POWER TO **CHANGE A LIFE** IS IN YOUR HANDS.

DO SOMETHING ABOUT IT.

Please donate to the Vinnies Winter Appeal.



CENTRAL
SHOALHAVEN
MOBILE

Preschool

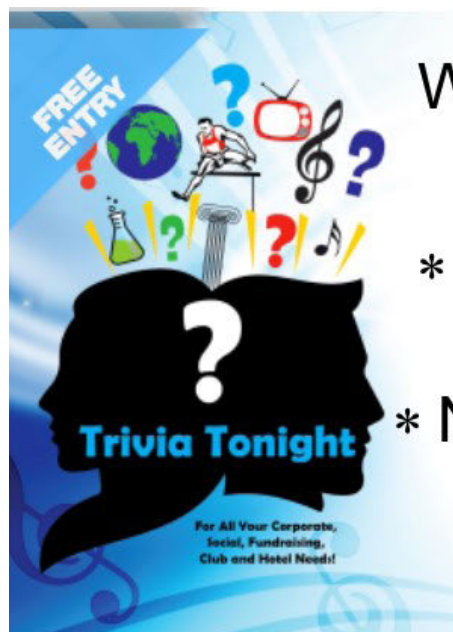


Central Shoalhaven Mobile Preschool is a community based not for profit organisation operating for 38 years in the Shoalhaven area. We provide educational programs designed for preschool children aged between 3 - 5 years by fully qualified staff in a caring environment. Allow your child to make new friends within the local area. Subsidy available. We operate from Callala Beach Community Centre, Quay Road Callala Beach on Tuesday and Wednesday.

PRESCHOOL HOURS: 9.00 - 3.00 ADDITIONAL HOURS: 8.00 - 9.00

All enquiries please phone our office on 4423 0571 / 0432 274 244 or call in at our venue.

www.shoalhavenmobilepreschool.com.au



Weekly shows in Shoalhaven area **PLUS**

- * One-off Shows & 'Golden Oldies'
- * Emcee Services

* New entertainment options coming

Call Dianne: 0407 342 663

triviatonightinfo@gmail.com





Callala Bay
Open 7 Days A Week
Market-Fresh Fruit and Vegetables

Lotto

Newspaper

ATM

It Pays to Shop Independent

Located in Bayview Plaza, 55 Emmett Street, Callala Bay

How the locals like it™

CALLALA CHRISTIAN CHURCH

Callala is such a beautiful place; to walk along the beach at sunset or sit in quiet contemplation as we watch the sunrise over the bay; to observe the sea eagles soar over the point or watch the dolphins frolic in the bay. The question that comes to my mind is in such tranquil surroundings do we take the time to enjoy that which God has provided for free? Another question that pops into my mind is, why do so many of us feel stressed, overly concerned for our future or so busy that we find little time to breathe and relax?

I find more than a few people whose experience or conception of the Christian church is a religion of rules and traditions that have very limited value to our postmodern society. What if we were to understand the Christian faith as God's desire to be a relational rather than a religious one? What if the local church saw itself as a body representing God's love for all people and to see everyone living their life to the full?

I like Eugene Peterson's translation of Matthew 11: 28-30, it sums up what I believe is Jesus' desire for our lives: -

"Are you tired? Worn out? Burned out on religion? Come to me. Get away with me and you'll recover your life. I'll show you how to take a real rest. Walk with me and work with me—watch how I do it. Learn the unforced rhythms of grace. I won't lay anything heavy or ill-fitting on you. Keep company with me and you'll learn to live freely and lightly."

I see our faith as not only real but being lived out in the lives of each of us who claim to be followers of Jesus.

For those who feel burdened by life and struggle with various issues we have a qualified counselor whose desire is to see people freed from their past and able to move on with a renewed enthusiasm for life.

Pastor Kevin Kettlewell
Callala Community Church
Telephone 0437338739

ROAMING INSTEAD OF FISHING

Fellow Fishos, Change of scene for this month. Currently we are on our way to Weipa, hopefully to catch some quality fish. Of course it will be great to catch up with our son and his family, especially Tye our 3 ½ year old grandson.

We are currently at Charters Tower where it is 12degrees C and raining. We have travelled 4153 kms and it is no warmer than Callala! Notes of interest; fuel so far has cost \$815 and the vehicle is averaging 15.53 lt per 100 kms. Not bad towing a 23-foot van.

Highlights of the trip so far:

- At Narrabri we visited a fish farm breeding silver perch, yellowbelly, catfish and freshwater yabby's. - mainly for stocking dams. Even though silver perch are endangered, their perch are not allowed to be released into the rivers. Very strange!
- Outside Wee Waa we visited a winery called Seplin Estate. Although officially closed now, they still have plenty of wines on hand for sale from \$10 to \$20 a bottle. We were really surprised at the quality of the wine. It was really good.

We are staying only two nights in any one town [*3 nights in Lightning Ridge*] and restricting our travel to about 300k's a day. We are finding generally, that that is not a long enough time in any one town. I guess we are going to have to make a decision as to which towns we want to revisit, which may or may not happen.

With time restraints I guess one has to decide, - do I want to see a little bit of a lot of towns or a bigger bit of fewer towns?

For those of you who are interested there will be another installment of our trip in next month's newspaper.

Till next month,
Good health and good fishing
Jon Lee

Callala Anglican Church

July is a month of winter and school holidays. It is also a busy time when the church reaches out to the community.

On Saturday 2 July we held a free family film afternoon, showing the life of Beatrix Potter, "Miss Potter". Beatrix Potter was of course the author of those much loved characters, Peter Rabbit, Tom Kitten, Benjamin Bunny, Miss Moppet, Jemima Puddle-Duck, Mr. Todd and many more.

Afternoon tea was served and it was a good community event for those who attended. Watch out for our next free family film show. Date and film titled to be arranged.

Wednesday July 13 we hosted a Christmas in July lunch. Over 54 people attended and as they came into church was met by beautifully decorated tables courtesy of Doris and Jan. Before lunch was served Carols were sung, we heard about the different Christmas tradition throughout England during the early 1800's to modern day times. Then Matthew 1:18-25 was read and Rev Gilbert Page gave the sermon based on Joseph the father of Jesus, and of whom very little is known apart from his faithfulness to God.

People enjoyed the traditional winter Christmas

fayre of roast pork, ham, chicken, roast potatoes, dauphine potatoes, Yorkshire pudding, salads, Christmas pudding, Christmas tarts, fruit pavlova and of course lollies on every table.

Lots of people worked extremely hard to make this a success for the community and if you have never been and would like to attend next year please get in touch early as this is always very popular.

As part of the churches relationship and mission to the community we strive to reach out to all people where everyone is welcome, whether regular church attendees or not, just keep looking out for our adverts on the notice board, church windows and school magazine.

Rev. Sue Fisher

Assistant Minister

Anglican Churches

of Culburra Beach | Callala | Currarong

Callala - Church Service - 5pm Sunday

All Welcome | Kids Church

St Marks, 2 Hunter Street, CALLALA BAY

Caterpillar's Play Group - 9:30am Friday @ Culburra Beach Anglican

Kids Club - 3-4:30pm Friday @ Callala Anglican

289 (Youth) - 5-7pm Friday @ Callala Anglican

For more information: Rev. Paul McPhail

m. 0414 616 860 e. culburra.anglican@gmail.com

www.culburraanglican.org.au

Love And Agreement

We all love love. We feel good when we are loved. We see love meeting people's needs all around us. We all love love. The Beatles made it to number 1 on love - 'All you need is love, love, love is all you need.' As a Christian, trusting in Jesus, knowing that 'God is love'. But something strange is happening to love, and I am not referring to how children, and some adults, respond when told we should love everyone "Oh, gross," is often the reply.

Somehow, in our current social climate, we have assigned truth to the statement that if you love someone or some group of people, you must agree with them. The comment might come like this, "If you really loved me/us, you would agree with what I/we say/think/believe about life." Or it may come more harshly, "You mustn't love us because you don't agree with us, so you must be a bigot..." Sometimes it can even be seen as unloving to point out, for the sake of someone's good or safety, where they are wrong. But this cheapens love. It even removes love's great power to bring peace among people.

Love actually says, "I will treat you with respect, compassion, humility, gentleness and patience. If we disagree, I am willing to discuss our disagreement, and will continue to treat you with respect, compassion, humility, gentleness and patience, whether we come to agreement or not." (Check out Colossians 3:12-14 or 1 Corinthians 13:4-7 to see more.)

Let's look at an example:

Imagine we had a friend who decided that, because they had no stability in their life, they would encase their feet in concrete to give them give them a better footing. (I know, stupid example, but stick with me.) What is the loving thing to do in this situation? To say, "This is a great solution for you. I think it is a wonderful life choice. Let me buy the concrete, while you take off your shoes"?

Of course not.

The loving thing would be to say something like this, "I know you are finding life difficult at the moment, but I think there are better solutions to these problems. Can we take some time to discuss some them?"

I find this understanding of love in Jesus, who loved all people. But in loving them he did not have to agree with them. He loved greedy selfish tax collectors, prostitutes (even stopping other people hurting them), and religious zealots, but didn't agree with their beliefs or way of life. Jesus loves all people, but this does not necessitate that he agrees with all people. I think Jesus would go so far as to say, "I love you so much that I MUST DISAGREE with you." Jesus loves us so much that he came, died in our place and rose to life so that we could have life to the full.

If we want to live together peacefully, we need to understand love. We need to be able to say, "I will treat you with respect, compassion, humility, gentleness and patience, whether we come to agreement or not." We all love love. Let's think carefully about what that love looks like.

Paul McPhail, Minister Culburra Beach, Callala and Currarong Anglican Churches

BE IN HARMONY

Harmony Meditation Group & Qigong has been meeting at Callala bay on a Friday morning at 10am for over 14 years. NO fees, NOT a religion, NOT a psychotherapy group, NO obligation to attend weekly ~ just when you want to.

Relax and learn how to live IN HARMONY with yourself and your world.

RING JOHN OR JEANNIE ON: 4446 5902

or come to

59 BOORAWINE TERRACE

10am Friday



The Hon

Shelley Hancock MP

Member for South Coast

Speaker of the NSW Legislative Assembly

“Please come in and see me -
It will be a pleasure to help”

57 Plunkett Street, Nowra
PO Box 1426, Nowra NSW 2541

Ph: (02) 4421 0222

Fax: (02) 4422 1180

Email: southcoast@parliament.nsw.gov.au



WINNER OF THE CALLALA BUSINESS OF THE YEAR AWARD 2016

Callala Bay Pharmacy

2/55 Emmett Street, Callala Bay 2540 4446 4251

Hours: Mon-Fri 9am-5:30pm; Sat: 9am-12:30pm

Friendly, Professional Service

Diabetes Australia Supplies

Baby Weighing • Gift Lines

FREE delivery to Callala Beach and Callala Bay



E & S Painting Services

- Interior & Exterior Painting
- Friendly Local Service
- Excellent Rates
- Quality Assured

M: 0422 560 696 H: 4446 5056

Graham Worts



*Callala Beach RSL Sub-branch
Women's Auxiliary*



ARE HOLDING A

CENT AUCTION

AT



CALLALA BEACH RSL COUNTRY CLUB



ON



WEDNESDAY 24th AUGUST 2016

A small fee of \$5.00 gets you a light lunch and 2 sheets of 20 auction tickets

BE THERE AT 1000 a.m. FOR 1030 a.m. START



firstnational

REAL ESTATE

Callala

At Callala First National you'll find a team of professionals to handle all of your real estate needs. We have been serving the Callala community for over ten years and continue to strive to provide a service above and beyond our client's expectations.

Address

58 Boorawine Tce
Callala Bay
NSW 2540

Contact

P 4446 4313

F 4446 4311

E info@callalafirstnational.com.au

W www.callalafirstnational.com.au

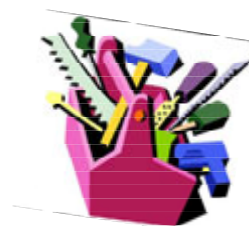


QUALITY ASSURANCE
SYSTEM ISO 9001

Tools Trash and Treasure Buy Swap and Sell Day

Are you ready Boys.....Come on down

- **Saturday 27th August**
- **8.30am to 12.30pm**
- Callala Beach Community
Centre Quay Rd Callala Beach
- Sausage Sizzle – Egg and Bacon Rolls
and light refreshments for sale



Join us for a fun day with displays from the **Shoalhaven Vintage Machinery Club, Local Hot Rods, Local Classic Motor Bikes and Men's Sheds**. Clean out the garage sell your treasures...old fishing gear- camping equipment- tools why not book a table and make yourself some money.

Ladies come on down and check it all out you could pick up a bargain

No time to sell your treasures...donate them to the Callala Beach Progress and we will sell them and put the money to more concrete for the pathway. *(Only goods in clean saleable condition please)*

If you would like more information or to book a table contact
Sandra 4446-5089

*Organised by Callala Beach Progress Association with proceeds to
Callala Beach to Mvola cycleway/pathway*



Shoalhaven City Council is Developing a

DISABILITY INCLUSION ACTION PLAN

Are you a person with a disability or a carer of a person with a disability or a disability service provider?

We want to hear your feedback and ideas!

A Disability Inclusion Action Plan is a requirement under the NSW Disability Inclusion Act (2014).

The plan will demonstrate Council's commitment to people with a disability on improving access to services, facilities and jobs and is also designed to change perceptions about people with a disability.

August 23
NOWRA

10am to 12 noon Tuesday,
Shoalhaven City Council Administration Building
Bridge Road, Nowra – Jervis Bay Room

August 24
ST GEORGES BASIN

10am to 12 noon Wednesday,
St Georges Basin Community Centre
21 Meriton St, St George's Basin

August 25
Ulladulla

10am to 12 noon Thursday
Ulladulla Civic Centre
Princes Highway, Ulladulla

RSVP by the Monday 15 August 2016 to
Community Development 4429 3456

Please let us know if you need a sign language interpreter, or other support. Venue is accessible and has a hearing loop.





Specialising in
WATERPROOFING

- BATHROOMS
- BALCONIES
- PLANTER BOXES
- ROOFING

JOINT SEALING

- FIRE RATED
- PANEL JOINTS
- SAW CUTS
- FLOOR JOINTS

WATERPROOFING LIC.NO. 163162C
MASTER BUILDERS ASSOCIATION
MEMBERSHIP NO. 18491909

ADVERTISEMENT



ANN SUDMALIS

Liberal for Gilmore

*Creating more local opportunities,
a healthier community and
safer local roads.*



Authorised by Ann Sudmalis, 59 Junction Street, Nowra NSW 2541.

59 Junction Street (PO Box 1009), Nowra NSW 2541

W: www.annsudmalis.com.au

E: ann.sudmalis.mp@aph.gov.au

P: (02) 4423 1782

Dr John C Wright B.V.Sc.

CULBURRA VETERINARY CLINIC

7 Weston Street, Culburra Beach

9am-11am weekdays

4-6pm Mon, Tue, Thurs

4-5pm Wed, Fri

10am-12pm Sat

CALLALA VETERINARY Consulting Room

22 Emmett Street Callala Bay

1-3pm weekdays by appointment

Please phone: 4447 3851 for appointments, enquiries or after hour calls

Callala Community Church

... following Jesus

Sunday Worship 9am

at the Callala Community Centre
Emmett Street, Callala Bay

Wednesday Home Prayer Meeting 7.00pm

Enquiries phone Pastor Kevin Kettlewell 0437 338 739

FREE

Pre-Loved Clothing & Book Stall

First Saturday of the Month
at the

Callala Community Centre

9.30am to 12am

Clothes in good condition can be dropped off at the stall (on the day only). If clothing can be delivered by 10am; this will allow them to be displayed.



New Bus Timetable Starting – Friday July 8th 2016



**Anyone wishing to be picked up to come to the
Club will now need to call & book the bus.**

**Bus will no longer make runs every ½ hour
unless a booking has been made.**

**Callala Bay – Pick ups on the hour.
Starting from 4pm**

**Callala Beach/Myola – Pick ups on the ½ hour
Starting from 4:30pm**

**Anyone wishing to be taken home on the bus
needs to simply ask at the Bar**

COMMUNITY CONTACTS

Emergency Police Fire Ambulance – **000**
Nowra Police Local Area Command – **4421 9699**
Crime Stoppers – **1800 333 000** (anonymous reporting)
Police Assistance line – **131 444** (non-emergencies)

State Emergency Service – **132 500**
Jervis Bay Marine Park – **4441 7752**

Callala Doctor's Surgery – **4446 5350**

Shoalhaven City Council
General enquiries, business hours – **4429 3111**
Emergencies and after hours – **4421 3100**

Justices of the Peace
Daniels, Nancy – **4446 6817**
Duncan, Howard – **4446 6535**
Garry, Rexeen(Rikki) – **4446 6649**
Hannan, Robyn – **4446 4428**
Lower, Jill & Graham – **4446 6281**
McMaugh, Dallas – **0400 189 875**
Taylor, Lorraine – **4446 5117**
Ward, Noel – **4446 6800**

Culburra & District Garden Club
Every 3rd Saturday of the month at 1.30pm at the Banksia Hall Community Hall,
Fred Evans Lane, Culburra Beach (IRT entry) For more details contact Doris
Carpenter - **4446 5631**

Culburra & Districts Community Health Service
Visit the Op Shop and pick up a bargain! Proceeds help maintain the Medical Bus
that transfers people to Nowra for medical appointments from Greenwell Point,
Culburra Beach, Callala Bay & Beach, Currarong and Myola. Please contact
Culburra Pharmacy on **4447 2382** to arrange transport.

If you have good saleable furniture to donate, contact Jim on **4446 6733**

DISCLAIMER

The Publisher, known as Callala Bay Community Association Incorporated, does not accept any responsibility or liability in any way whatsoever with regard to any of the paying advertisers contained in this newsletter. Additionally the views and comments of all reports submitted are the responsibility of the person/organisations submitting same, including those from SCC (Shoalhaven City Council), which are usually copied verbatim from correspondence and are included for your information. The reports do not necessarily reflect the views of the Publisher.

AS LOCAL AS

A PADDLE
ON JERVIS BAY

AS STRONG AS

5 OFFICES
WORKING FOR YOU



AS LOCAL AS

THE SURF AT
CULBURRA BEACH

AS STRONG AS

5 OFFICES
WORKING FOR YOU



Ray White.

We have purchasers eager to buy in Callala, Culburra Beach, Orient Point and Currarong today.

Curious to see what your property is worth? **Get in touch.**

Ray White Callala Bay

02 4446 5799

Ray White Culburra Beach

02 4447 3169

raywhiteculburrabeach.com.au