

# Callala Bay NEWS

October 2022

Issue 108-2022

*Monthly Magazine from the Callala Bay Community Association Incorporated*



*The Callala Bay NEWS proudly supports your local community  
by helping to fund projects that benefit all residents.*

*Consider supporting us by subscribing for a small yearly fee.  
Contact: [editor@callalabaycommunityassociation.com](mailto:editor@callalabaycommunityassociation.com)*



# ATB GARDENS YARDS + TREES

*All aspects of garden, yard & property maintenance*

- Lawn Mowing • Irrigation • Fertilising • Aerating
- Tree Work • Landscaping • Hedging • Mulching
- Rubbish Removal • Domestic & Holiday Rental Cleaning
- High Pressure Water Cleaning • Garden & Yard Make Overs



• Commercial • Domestic • Rural Properties

# 0415 732 801

ABN: 16 821 580 073

andrew@atbcontractors.com.au | www.atbcontractors.com.au



Enrolment for children 2 to 5 yrs  
Open 8am – 4.30pm  
University & TAFE trained teachers  
'School Readiness' curriculum  
Fee rebates available to eligible families

Awarded 'Exceeding National Quality Standards' by the NSW Department of Education and Communities.

For further information please call us on **4446 6089**



**first national**  
REAL ESTATE

Callala

4446 4313



Callala First National has been servicing the local area for more than 19 years and continues to strive to provide a service above and beyond our clients expectations. If you are considering selling or renting your property contact our friendly team on 4446 4313 or drop into our office at 58 Boorawine Terrace, Callala Bay.  
www.callalafirstnational.com.au

# CALLALA BAY NEWS

*A monthly newsletter of the  
Callala Bay Community Association Inc.*  
ABN: 68 031 980 561  
*www.callalabaycommunityassociation.com*  
Email: *admin@ callalabaycommunityassociation.com*  
PO Box 14 Callala Bay 2540

## President

Sue Chapman

## Vice President

John Fowler

## Secretary

John Byron

## Treasurer

Mark Bennie

## COMMITTEE MEMBERS

Fran Sheil

Christine Byron

Jacinta Flattery - O'Brien

John Fowler

Geoff Carne

James Morris



## Callala OOSH By Katie

Callala Before and Afternoon Care for  
school-aged children by qualified and  
caring staff.

**For information please call Katie-**

0419917793 or 0427976669

email: [callalaooshbykatie@gmail.com](mailto:callalaooshbykatie@gmail.com)

# INDEX

Culburra Beach & District Mens Shed .....	Pages 4-5
Bushcare .....	Page 6
From the President.....	Page 8
Emergency Contacts.....	Page 12
Bus Timetable .....	Pages 16-17
Callala Community Garden.....	Page 18
Culburra Beach & District Garden Club.....	Page 22
Shared User Path Network and Road Rehabilitation Community Consultation .....	Page 25
Coastal Management Program ....	Page 26

## Note from the Editor:

**The CBnews proudly supports our  
community, consider subscribing for a  
small yearly fee.**

Please contact us with any local issues  
or concerns with the intention of having it  
published.



**Scott Horsburgh**

**Ph: 4446 6544**

18/55 Emmett Street  
Callala Bay 2540

**Your Local Butcher  
The Meat Specialist**



# USE, LEARN & SHARE SKILLS



CULBURRA BEACH & DISTRICTS MEN'S SHED

## **Culburra Beach & Districts Men's Shed**

Our Men's Shed, like many other community organisations, is a not-for-profit organisation. Accordingly, fund raising and income generation are constant issues if we are to continue our activities.

Annual membership fees are kept to a minimum and primarily cover our biggest annual expense – insurance! The workshop equipment that we use can be dangerous and, despite due care and training, accidents can occur. Our insurance is negotiated by the Australian Men's Shed Association, in order to get the best possible premium for each affiliated Shed.

Grants from various Government, Council, Community and private organisations have assisted us in the past to procure major items of equipment like solar PV panels and dust extraction units. We continue to seek these grants whenever available.

Donations, both private and corporate, were an important component in the initial building

and establishment of the Shed. In particular, we greatly appreciated Warren Halloran's support – the Shed is named in his memory.

Door sales and Callala Markets sales of our products are our main source of funds for materials, etc. This has been augmented by various projects e.g. supply of bedside units to Illawarra Retirement Trust and nest boxes for Shoalhaven Council via a Bushfire Recovery Grant. We also make items to order on request. We are proud to be associated with the Callala Markets due to their strong community focus. Stallholder fees are routinely used for donations to various local community groups and charities. Since their inception in 2017, the Callala Markets have donated about \$7,000 to groups as diverse as Callala Bay RFS, Callala Beach RFS, Shoalhaven Hospital, Callala Public School, Marine Rescue Jervis Bay and Marine Rescue Shoalhaven.

Their most recent donation was to the Callala Brumbies Soccer Club, as featured in the August edition of Callala Bay News.

Our Shed is pleased to have contributed to the above in our small way.

We will be at the Callala Markets on 8 October, with our range of timber craft, nest boxes and other products for purchase.

Otherwise, please call into the Shed on any Monday or Wednesday morning, from 9am to 1pm, for a coffee and chat about membership or our products and services.

For more information, call us on 0499 452095 or visit our Facebook page.



*Glyn Williams of Marine Rescue Shoalhaven with their donation cheque*

## JERVIS BAY FILM TRANSFERS

Records



Cassettes



Onto  
CDs



VHS movies



onto DVDs

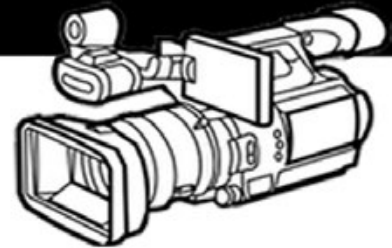


**8mm Films onto USBs**  
**Convert CDs to Mp3s**  
**Scan Slides onto USBs**

**Call: 0401076338**

[jervisbayfilmtransfers.com.au](http://jervisbayfilmtransfers.com.au)

**Wedding  
Videographer**



**We Build  
Corporate  
Websites**

# YOUR AD HERE

Advertise Your Business With The **CBnews** Today!

**Very Affordable Rates For All Businesses!**

Contact the Editor for more info

[editor@callalabaycommunityassociation.com](mailto:editor@callalabaycommunityassociation.com)

*The Callala Bay News Publication is proudly funded by the Callala Bay Community Association with the help of our local business sponsors*

## Bushcare

Over the past month our team has worked at the following sites:

### Myola

The erosion of the foredune at Myola Spit has inadvertently reduced the Dolichos Pea weed load there, but the troublesome weed has spread along the road leading to the car park. Hopefully we have stalled some of that growth by removing the vines and flowers, which can smother shrubs and trees up to several metres high. This weed is another example of a plant imported from South Africa mid nineteenth century as a garden plant due to the attractive pea flowers.

### Callala Bay

Lackersteen St. If you are walking towards the car park, about 30 metres before the STOP sign, there is a patch where the creek waters have pushed up, and native Common Reeds have spread around the water. The area has been 'disturbed' and consequently is very weedy. Our work removing the weeds there has been helped by Council spraying along the edge of the vegetated area. We took advantage of that and have removed weeds from a lovely patch of Maiden Hair fern which is about ten metres towards the creek. Also removed was Buffalo Grass that had spread around and among the Common Reeds. Now you can look from the path right down to the creek, and there's a plethora of native wonders to behold!

Hopefully the summer King tides will inundate the area adjacent to the car park which hits the dreaded Veldt Panic grass, although the native grasses and ground covers die back due to the salty water as well.

### Boorawine

Dune at end of Mitchell Rd. Buffalo removed next to Sealark track. They're hard to find unless you start clambering about but there's been considerable regrowth of (dumped garden waste) weedy succulents, mainly Crassula, at both sides of the area. Removal is painstaking work, because every root, every stem and every leaf needs to be bagged or weed will regrow. Alarmingly a weed/garden escapee new to the area, Vinca major is starting to spread here. Our Council supervisor is providing advice about removal of this weed. It's hard not to feel frustrated about people growing (and dumping) plants like Crassula/Vinca major close to bushland, but we all make choices that others in our community find fault with, I suppose.

Given it's September, small native orchids are appearing, including some courageous Green Hood Orchids that popped up right on the edge of the foredune half way along the beach here at the Bay. The salty winds burnt those at the very front, but others remained longer.

Our Council contact is Michael Smith, ph 1300293111 or Michael.Smith@shoalhaven.nsw.gov.au.

As noted previously, please feel free to contact me on my number below if you would like to give Bush Care a go. Our regular group sessions are on Tuesday mornings, but we can be flexible in site, days and timing for those who are interested in participating.

Any queries about information or opinions in this column, my [Diana] phone number is: 0419 531 902



ABN: 40 132 674 769

LEAVES AWAY PTY LTD trading as

# SHOALHAVEN GUTTER CLEANING

COMMERCIAL & RESIDENTIAL  
FULLY TRAINED      FULLY INSURED

## 0490 083 275

reliability, quality, value

shoalhavenguttercleaning@gmail.com



Advertisement

# Shelley Hancock MP

Member for South Coast



“If I can assist with any State Government Matter  
please contact my office”

Email: [southcoast@parliament.nsw.gov.au](mailto:southcoast@parliament.nsw.gov.au)

Phone: (02) 4421 0222

1/57 Plunkett Street, Nowra, NSW 2541



Authorised by Shelley Hancock MP, 1/57 Plunkett Street, Nowra, NSW, 2541 Funded using Parliamentary entitlements\*



Website Design • Graphic Design • Printing • Marketing • Logo Design

📞 0414 785 776 ✉ [info@scottmorgan.com.au](mailto:info@scottmorgan.com.au)

🌐 [scottmorgan.com.au](http://scottmorgan.com.au)



**Callala Bay**  
**Open 7 Days A Week**  
Market-Fresh Fruit and Vegetables  
Lotto Newspaper ATM

**Ph: 4446 4811**

**It Pays to Shop Independent**

**Located in Bayview Plaza, 55 Emmett Street, Callala Bay**

*How the locals like it.*

## Presidents Report

The CBCA Committee met in August and September. While a General Meeting has not been held, much work has been done behind the scenes.

The CBCA assisted the Callala Bay Fire Brigade advertise Fire Readiness Weekend on Sat and Sun, 17 and 18 Sep 22 at the Fire Station. Additionally, the CBCA hosted a 'Facts and Fallacies' session with the Fire Brigade on Thu 15 Sep 22 for interested community members.

The CBCA actively pushed for and then held a special drop-in session on the Coastal Management Program on 7th Sep 22, for all Callala residents which was hosted at the Callala Beach Progress Hall. (see article in this edition) The consultants leading the project were extremely satisfied at the great turn out on the day.

The Committee approved a donation to the Callala Bay Brumbies Soccer Club of \$500. The Club has been unable to play on their home ground because of the heavy rain and this has had a negative effect on the Club's fundraising capability. This is a great example of local funds being used to support the locals! CBCA sausage sizzles and our annual raffle help to ensure that funds are available for these activities.

The CBCA Committee discussed ways to make the Newsletter a 'good read'. We have decided to include a short paragraph and photo on interesting locals and visitors in each edition, because it's great to know about the people who make up our community. (See separate article). If you have a neighbour or friend who you think would be a worthy subject, then please let us know. They could be school aged, retirees, artists, volunteers and many others. There are many amazing people in our community! Unfortunately, there have not been many stories from sporting teams, clubs or groups, so let us know of your teams' successes or tales and we will include them in your Newsletter.

The Committee also wants to encourage a greater knowledge about our Callala Bay history. If you have photos or old newsletters or articles which you are willing to share, we would love to see them. Bring them to a meeting and we can copy them for future articles. One of my neighbours brought me a copy of the 1970 Callala Bay Progress Association's Seventh Annual Report the other day which had been kept in a box in

storage. One of the articles I found interesting was a note about a proposed steel works on Jervis Bay. Who knew! If anyone has more on this idea and what happened to it, we would love to hear about it. We have also included a great photo from by-gone times in this edition featuring some interesting outfits.

In addition, members of the Committee meet with our Ward Councillors and SCC officers regularly to raise matters of concern from our community.

As you can see, in between General Meetings, the CBCA Committee is actively working to support the Callala Bay community.



Presentation of \$500 from the CBCA to Callala Soccer Club Vice President Anna Gardner by Mark Bennie, the CBCA Treasurer. Anna was very chuffed.

### Next Meeting

The next General Meeting of the CBCA will be held on Wednesday 12th October at 7pm. We look forward to seeing lots of people there.



## Postal Services at Callala Bay

A new Community Post Office (CPO) is now operating from the Tempt Gift Store in the Callala Shopping Precinct. Its opening hours are Mon to Fri from 9:00am to 4:00pm and Sat from 9:00am to 12:00 noon. The CPO can provide stamps and envelopes, parcel collection and Express Post services. However, banking and bill pay facilities are yet to be arranged. As you can imagine there is a degree of training, customer safety and other activities peculiar to Australia Post which must be achieved by the staff before the CPO can become a Licensed Post Office (LPO).

The return and provision of physical Post Boxes are dependent upon specific approvals and proce-

dures and these must be met before the boxes can be installed.

The great news is that full postal services should be available before Christmas.

Please be aware the staff are there to help you with postal queries. Until the full LPO services are available, your continuing patience and support to the staff is appreciated.

# Crookhaven Mechanical Repairs

**4447 5845**

**FREE Pick - Up Callala - Bay - Beach - Myola**  
We Can Service Your NEW Car AND Protect YOUR Warranty  
Major Trip Prep - Suspension Upgrades - Bullbars - Accessories



ARC-AU21881  [crookhavenmechanical.com.au](http://crookhavenmechanical.com.au)  MVRLic35947



## The Point Gallery Craft

**76B Greenwell Point Road Greenwell Point NSW 2540**

**Extensive Art and Craft Made in the Shoalhaven**  
**Exhibition space available on a calendar month basis**  
**Tourism Ambassador for the Shoalhaven**  
**Normal opening hours 10am-4pm Friday – Monday ur**  
**COVID Hours 11-3 Friday, Saturday & Sunday**  
**For further information**  
**Contact: 0400998610 or 0418249148**



Having problems with your computer?

# Hayton.Biz IT

Local computer support & service.

Onsite IT & computer support for business and home users.  
Experienced technicians, same day service, No call out charge for the local area\* & competitive rates.  
Laptop repairs/servicing also undertaken.

- Computer repairs
- General PC report
- Computer servicing
- General PC advice
- Internet problems
- Email setup
- Virus/malware removal
- Network configuration
- Domain registration
- Server installation
- Server support
- Backup configuration

## (02) 4423 3857



## GP JAMES CLEANING SERVICES *The Royal Treatment*

### Fast Reliable & Trustworthy

- \*Specialist in Holiday home cleaning
- \* Linen Hire and Laundry Service
- \*Domestic and Office Cleans
- Bond and Rental Cleans

**Fully Insured**



0402576859 0244465000 [gpjamescleaning@gmail.com](mailto:gpjamescleaning@gmail.com)

## Culburra Beach Orient Point Men's Shed Inc.

*The Shed by the Lake*

Location: Old Scout Hall Cnr West Crest & Wollumboola Lane

### NEW MEMBERS WELCOME

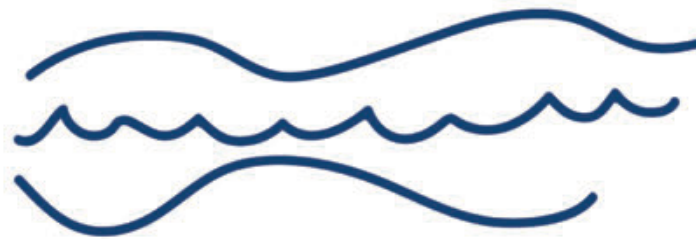
You are invited to join the Longest Established Men's Shed in Culburra, learn new skills and bring your own, come and enjoy the company of our friendly members and participate in a variety of activities

We are open 8:30am - 1pm Tuesday, Wednesday & Thursday

**All enquiries:**

**John Castellan: 0498 023 781**

**Max Ford: 0403 204 847**

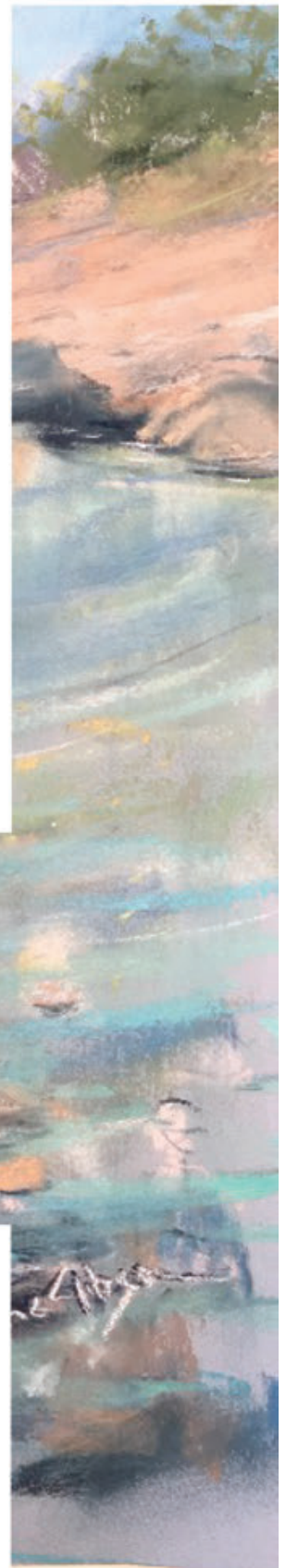


# CURRARONG ART TRAIL

**FIRST SATURDAY OF EACH MONTH**  
*10AM - 2PM*

MEET THE ARTISTS IN THEIR STUDIO AND EXPLORE  
WONDERFUL ART PRODUCED IN CURRARONG

BRING YOUR FAMILY AND FRIENDS IT'S FREE



FOR MORE INFORMATION CONTACT  
[CURRARONGARTTRAIL@GMAIL.COM](mailto:CURRARONGARTTRAIL@GMAIL.COM)



CHECK OUR WEBSITE  
[WWW.CURRARONGARTTRAIL.COM.AU](http://WWW.CURRARONGARTTRAIL.COM.AU)  
FOR ART TRAIL MAP, ARTIST  
LOCATIONS AND DETAILS

## SPONSORS

*Shoalhaven*  
SOUTH COAST - NSW



CURRARONG ARTS & CRAFTS

**ClarendonHomes**



Claire Graham



# Emergency Phone Contacts

Situation/Service	Phone Number	Website
Injury or Health Crisis	000	ambulance.nsw.gov.au
Motor Vehicle Accident	000	police.nsw.gov.au
Police	000	police.nsw.gov.au
Police – Non Emergencies	131 444	police.nsw.gov.au
Police Crime Stoppers	1800 333 000	police.nsw.gov.au
Household Fire / Hazmat	000	fire.nsw.gov.au
Bushfire	000	rfs.nsw.gov.au
Shoalhaven RFS District Office	4424 4424	rfs.nsw.gov.au
Bushfire Survival Plan	-	rfs.nsw.gov.au
Bush Fire Information Line	1800 679 737	-
Flood, Storm and weather warnings	-	bom.nsw.gov.au
Storm / Flood	132 500	ses.nsw.gov.au
Power Outages	131 003	endeavourenergy.com.au
Main Road Closures	132 701	livetraffic.com
Local Road Closures	1300 293 111	shoalhaven.nsw.gov.au
Shoalhaven City Council	1300 293 111	shoalhaven.nsw.gov.au
Shoalhaven City Council After Hours	4421 3100	shoalhaven.nsw.gov.au
Shoalhaven Hospital	4421 3111	-
Milton Hospital	4455 1333	-

If you are **deaf** or have a **speech** or **hearing impairment** dial **106** for the Text Emergency Relay Service

## Useful Apps & Websites

Visitors to the area can download the following free mobile apps to stay informed of the latest advice and information in the event of an emergency.

### Emergency+ App

The Emergency+ app is a free app developed by Australia's emergency services, Government and industry partners.

The app uses GPS functionality built into smart phones to help a Triple Zero (000) caller provide critical location details required to mobilise emergency services.



[emergencyapp.triplezero.gov.au](https://emergencyapp.triplezero.gov.au)

### Other Helpful Apps & Websites



Fires Near Me NSW



Floods Near Me



Weather Zone



COVID Safe



BOM



Marine Rescue



Live Traffic



Facebook



Twitter



**DISASTER DASHBOARDS**

[shoalhaven.disasterdashboards.com/get-ready/overview](https://shoalhaven.disasterdashboards.com/get-ready/overview)



# ANGLICAN CHURCHES

of Culburra Beach | Callala | Currarong

## Callala Church Service - 5pm Sunday

All Welcome | 4:30pm Afternoon Tea | Kids Church

St Marks, 2 Hunter Street, CALLALA BAY

**Caterpillar's Playgroup** - 9:30am Friday @ Culburra Beach Anglican

**Kids Club** - Friday Afternoon @ Callala Bay Anglican

**289 Youth Group** - Friday Evening @ Callala Bay Anglican

For more information: Rev. Paul McPhail

m: 0414 616 860 e: culburra.anglican@gmail.com

[www.culburraanglican.org.au](http://www.culburraanglican.org.au)

## Peter Rose EyeQ Optometrists

Visit [eyeq.com.au](http://eyeq.com.au) for convenient online bookings

59 Kinghorne Street, Nowra

4421 4511



Peter Rose



Robert Rose



# Helping Hand Electrical

Offering Disabled and Aged pensioners

Special rates, No job to small



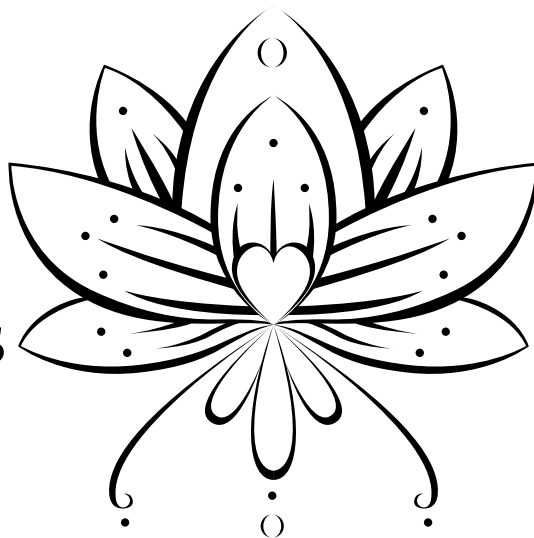
Phone- 0455 256 792

Elect Lic- 26266C

# Callala Yoga & Pilates

**CLASSES  
ON NOW**

**ALL  
AGES/ABILITIES  
WELCOME**



**FIND  
TIMETABLE  
ON OUR  
FACEBOOK  
PAGE**

**FACEBOOK.COM/CALLALAYOGA**  
**PH: 0422433159 INSTA: @CALLALAYOGA**



**Pottenger & McGhee Solicitors**  
**Nowra**

Conveyancing | Wills & Estates | Business Law | Leases

We look forward to meeting you and helping you with your legal needs.

Level 1, 25 Kinghorne Street, Nowra Phone 02 4421 6166

Email: [pbetts@potmac.com.au](mailto:pbetts@potmac.com.au)

If you can't come to us, we can come to you!



*Where the  
Beach & Bay  
come to play!*

**GOLF COURSE**

Information & bookings  
callalagolf@outlook.com  
Open Every day (02) 4446 5313 opt 2  
(Check for closures during wet weather)

**FRIDAY**

Fitness Exercise  
Class from 10:30am



**TUESDAY**

\$20 or \$25 T-BONE Night.  
\$12 Lunches Monday to Friday.

**WEDNESDAY**

\$17 Chicken Schnitty Night.

**RAFFLES**

**THURSDAY**

Bowlers Extensive Raffle from 6pm  
with great prizes.  
Members Badge Draw!

**FRIDAY**

Meat Mart Best value Friday night in  
town - Meat Tray prizes valued @  
over \$1,000 – Tickets on sale 6pm  
Draw commences approx 7pm

**SATURDAY**

**LIVE MUSIC EVERY WEEK!**

Fisho's Raffle from 12 noon to 1:30pm

**SUNDAY**

Meat & Seafood Raffle - Tickets 4pm - Drawn 5pm  
Members Badge Draw!  
Fisho's Weigh In – 2pm 4<sup>th</sup> Sunday each month.



**Members  
Badge Draw  
EVERY  
THURSDAY  
& SUNDAY**

+ BONUS DRAW LAST SATURDAY EACH MONTH

**MONDAY - Close @ 7pm  
TUESDAY**

MEMBERS Happy Hour 4 - 6pm.  
Free Trivia – 6:30pm Start.

**WEDNESDAY**

NPL Poker – \$12 Entry -  
Includes 2 Lifelines - 7pm start.  
All games are sit & go – 10 per sit & go.

**THURSDAY**

Bingo – Eyes down at 11am  
**LAST SATURDAY EACH MONTH**  
Mega Meat Raffle + 2<sup>nd</sup> Chance Draw =  
5 x \$100 in points to be won!

**BOWLS**

Monday- Indoor 12 noon

Tuesday – Women's Bowls from 9:30am

Wednesday – Men's/Mixed Social Bowls.  
Names in by 12pm for 12:30pm start.

Every day – Barefoot Bowls  
\$10 per person – Everything supplied.  
Kids 12 & under play for free.

**DINNER FROM 5PM TUES – SUN  
(7 DAYS DURING SCHOOL HOLIDAYS)**

**Beach & Bay BISTRO**



**LUNCH 12 NOON – 2:30PM  
(7 DAYS)**

Phone: 02 4446 5313

43 Callala Beach Road, Callala Beach  
Courtesy Bus available 7 days – call Club to book.

www.clubcallala.com.au



# Route

# 120



## Currarong, Callala Bay, Callala Beach, Myola to Nowra and Bomaderry

Departs	School Days		Monday to Friday		Saturday and School Holidays		PM
	AM	AM	AM	PM	AM	AM	
Currarong	♂		♂	♂	♂	♂	♂
Crookhaven Pde	N/A	7.15 T	8.25 T		8.00		
Yalwal St	N/A	7.16 T	8.26 T		8.01		
Tennis Court	N/A	7.17 T	8.27 T		8.02		
Progress Hall	N/A	7.18 T	8.28 T		8.03		
Cambe & Nowra Rds	N/A	7.20 T	8.30 T		8.05		
Callala Bay							
Sydney Ave	6.04	7.35 T	8.47	10.10	8.20	10.10	1.45
Boorwine Terrace	N/A	7.30 T	8.40	10.13	8.23	10.13	1.48
Emmett Street Shops	5.58	7.30 T	8.46	10.16	8.26	10.16	1.53
Callala Public School	N/A	7.35 T	8.45	10.17	8.27	10.17	1.54
Lackersteen and Emmett	6.02						
Callala Beach / Myola							
Queen Mary Street	N/A	7.15 T	8.15	10.20	8.31	10.20	1.58
Catherine St Myola	N/A	7.20 T	8.20	N/A	8.36	N/A	N/A
Sir Henry Crescent	N/A	7.22 T	8.23	10.23	8.40	10.23	2.02
Callala Beach Shops	5.51	7.25 T	8.25	10.25	8.42	10.25	2.04
Watts and Lennox St	N/A	7.27 T	8.28	10.28	8.45	10.28	2.07
Mayfield		7.40 T					
Stewart Place Nowra	6.43	8.20	9.20	11.00 #	9.20	11.00 #	2.55
Bomaderry Rail	6.33	8.15	9.30	11.10 #	9.30	11.10 #	2.40
Nowra Tafe		8.20	9.32				
Stocklands Nowra	N/A		9.40	#	9.40	#	2.50
Train Departs Weekdays	6.43	8.17 & 9.20	10.00*	11.23 & 12.00pm*	10.00*	11.23& 12.00pm*	16.12
Train Departs Saturdays					10.31	12.29	16.33

\* Bus Service 737 Bomaderry Station to Kiama Station

T Transfer at Shoalhaven High School for Nowra and Bomaderry

# Drops only as Required.

SERVICES DO NOT OPERATE SUNDAYS AND PUBLIC HOLIDAYS

T Transfer at Callala School for Nowra and Bomaderry



# Route

# 120



## Nowra and Bomaderry to Callala Beach, Myola, Callala Bay and Currarong

	Monday to Friday		Monday to Friday		School Days		Saturday and School Holidays	
	AM	PM	PM	AM	AM	PM	AM	PM
<b>Train Arrives Weekdays</b>	8.40* & 9.15	11.40* am & 12.2	1.40* & 2.17				8.40* & 9.15	11.40* am & 12.27
<b>Train Arrives Saturdays</b>							8.19	12.21 2.19
<b>Departs</b>	♂	♂	♂				♂	♂
<b>Stewart Place Nowra</b>	9.20	12.20	2.55				9.20	12.20
<b>Bomaderry Rail</b>	9.30	12.32	2.40				9.30	12.32
<b>Nowra Tafe</b>	9.32	12.34		3.30 <b>S473</b>				
<b>Stocklands Nowra</b>	9.40	12.40	2.50		3.55		9.40	12.40
<b>Mayfield</b>								5.34
<b>Callala Bay</b>								
Callala School	10.17		3.35	<b>S473</b>			10.17	
Sydney Ave	10.10		3.43	4.05			10.10	#
Boorawine Terrace	10.13		3.40	4.08			10.13	N/A
Emmett Street Shops	10.16		3.35	4.10			10.16	#
<b>Callala Beach</b>								
Queen Mary Street	10.20		3.46 T	<b>S473</b> 4.22			10.20	N/A
Catherine Street Myola	N/A		3.51 T	4.27			N/A	N/A
Sir Henry Crescent	10.23		3.55 T	4.30			10.23	N/A
Callala Beach Shops	10.25		3.45 T	4.21			10.25	#
Watts, Lennox Road Loop	10.28		3.42 T	4.18			10.28	N/A
<b>Currarong</b>								
Cambe & Nowra Rds			3.50 T	4.20 T				N/A
Progress Hall			3.53 T	4.23 T				N/A
Tennis Court			3.55 T	4.24 T				N/A
Yalwal St			3.57 T	4.25 T				N/A
Crookhaven Pde			4.00 T	4.26 T				N/A

\* Bus Service 737 Kiama Station to Bomaderry Station.  
 T Transfer at Callala Bay for Callala Beach, Myola and Currarong.  
 # Drops as Required.  
 T Transfer at Callala Bay for Currai S473 Bus for Callala Bay, Callala Beach, Myola and Currarong.  
 SERVICES DO NOT OPERATE SUNDAYS AND PUBLIC HOLIDAYS.



CALLALA COMMUNITY GARDEN

52 EMMETT STREET CALLALA BAY,  
OPPOSITE THE SHOPS.

### OPENING:

Tuesday, Thursday & Friday Mornings from  
8.30 till lunch

1st and 3rd Sundays 9 am till lunch time  
2nd Saturday each month for the Produce  
stall 8 till noon.

callalacommunitygarden@gmail.com

### WHATS HAPPENING:

1. Saturday 1st October 2022 2pm  
**GENERAL MEETING**
2. Family Fun Friday Mornings the last Friday  
every month (Weather permitting)  
Morning tea will be provided by the garden  
9.30 to 11am.  
For all the community - not just members.
3. **PRODUCE STALL** Saturday 9th October  
2022 - 8am till 12 noon
  - a. Come and meet the team and pick up  
some fresh produce from the garden.  
We pick it at your request. (Cannot get  
fresher than that)
  - b. Cakes also available
  - c. A selection of potted plants and  
seedlings  
Succulents galore!
  - d. Herbs available for free.

### So! Whats in the ground?

**VEG:-** Beetroot, Parsnips, Silverbeet. Leeks,  
Broad Beans, Snow peas, Radish, Strawberries,  
Potatoes, Fennel. Rocket, Lettuce, Sorrel and  
more...

**HERBS:-** Coriander, Sage, Turmeric, Bay leaf,  
Kaffir lime, Shallots, Dill, lots of Garlic in the  
ground, Lemon thyme, Parsley, Chilli

**EDIBLE INDIGENOUS plants include:** finger  
limes, riberry, lillipilli, davidson plum and  
midyim berry. No fruits yet.

Ongoing fun for our little people. We now have  
regulars returned most Fridays mornings to play  
and mums help out in the garden.

### CONTACTS:-

Victoria Maudson: 0424 590 105

Gail Fitzgerald: 0412 930 080



Our last working Bee was well attended and very  
productive.

- A good start to the drainage system
- Progression on painting of plant stands
- Painting progressed on Julia`s Garden. Look  
for the pink wheelbarrow

BBQ and beer followed all the hard work. Thanks  
to all who made it such fun.

The lucky winner of our Father's Day Raffle was  
Bridget from Thirroul. Thanks to all our ticket  
buyers and sellers.

Welcome to our new members. We are now a  
friendly, social bunch over 70 strong, joining  
together to laugh and learn. **COME ALONG  
AND HELP US GROW**





**WELCOME** to the Callala Community Centre, conveniently located opposite the shops in Emmett St, Callala Bay.

We are one part of the Shoalhaven Community Information Network (SCIN). Our technology has been upgraded to include solar panels, a storage battery, and satellite communications to provide an independent, continuous, communication solution with the Nowra Emergency Centre.

The information can be seen on the screens located at the Centre.

An audio-visual system has been installed in the Centre offering flexible and comprehensive facilities, including;

- blue tooth; computer connectivity; the ability to operate DVDs and CDs and play personal audio-visual files from a USB drive or SD memory card.

If you want to have a wedding; memorial service; business conference; group gathering or family reunions the Callala Community Centre is well worth considering.

Our facilities include

- A well-equipped kitchen; air conditioning; raised stage and off-street parking, and
- Crockery, cutlery and glasses and seating for up to 120 people

For all hiring enquiries contact Cynthia on 0412 121 737  
or email [cynirwin974@gmail.com](mailto:cynirwin974@gmail.com)

Follow us on Facebook at Callala Community Centre.

# Callala Bay Progress Hall and Tennis Court

Available for both casual and regular hire  
Newly renovated, reasonable rates  
Ph: 444 64 313

## Regular Community Users

Craft Group: Tuesday (10am)  
Folk Dance: Tuesday (2pm)  
Subud: Monday and Thursday (7:30pm)  
Latin and Ballroom Dancing: Tuesday (7pm)  
Tai Chi: Saturday (8:30am)  
Yoga: Thursday (9:30am starting 2022)  
Tennis Lessons: Saturday (midday)

Yvonne ph 444 66 280  
Maureen ph 444 66 550

Alain 04331 56143  
John ph 0428 564 738  
Anna ph 0405 102 234  
Gary ph 0412 068 116

<https://callalabayprogresshall.weebly.com/>



## Don Hogan - The Orchid Whisperer of Callala Bay

Local resident, Don Hogan, moved to Callala Bay in 2010 from Bass Hill. He brought with him his amazing knowledge of orchids which he shares with everyone in the community. Don grew up on farm near Kyogle and moved to Sydney when he met his future wife. He started work with Goodyear and then after working in a number of industries, retired to enjoy more orchid time.

He had no knowledge of orchids prior to the late 1970s when he started growing them in his backyard almost by accident. He joined Bankstown Orchid Society, started showing orchids in the 1980s and the rest is history! At 84, Don is still very active, being the Show Marshall for both the Milton-Ulladulla Orchid Society and the Shoalhaven Orchid Society currently.

Don says he is always learning and through attending shows he can share his own knowledge. Don's back yard is alive with dozens of different varieties of orchid. Some locals will have stopped by Don's annual orchid sale over the past decade just to see what new varieties he has grown.

The photo shows Don with the many awards he has won in recent years for his beautiful plants.





# Callala Bay Pharmacy

2/55 Emmett Street, Callala Bay 2540 Ph: 4446 4251

Hours: Mon-Fri 9am-5.30pm; Sat 9am -12.30pm

## Friendly, professional service

- Diabetes Australia supplies • Baby weighing • Gift lines
- Blood pressure monitoring • Medication packing

**FREE delivery every Thursday to Callala Bay, Callala Beach and Currarong**

Dr John C Wright B.V.Sc.

## CULBURRA VETERINARY CLINIC

7 Weston Street, Culburra Beach

9am-11am weekdays

4-6pm Mon, Tue, Thurs

4-5pm Wed, Fri

10am-12pm Sat

## CALLALA VETERINARY Consulting Room

22 Emmett Street Callala Bay

1-3pm weekdays by appointment

Please phone: **4447 3851** for appointments, enquiries or after hour calls



## E & S Painting Services

- Interior & Exterior Painting
- Friendly Local Service
- Excellent Rates
- Quality Assured

**M: 0422 560 696 H: 4446 5056**

Graham Worts

## **Culburra Beach & District Garden Club Inc.**

Hello everyone, at our September meeting the display table, Showcase Spring, was filled with spring bulbs and flowers. Perfumed sweet peas filled the church and made us all feel happy. President Bev welcomed 21 members, one visitor and guest speaker Diana Lindsay. I was able to convince Diana once again to speak to our members as she is a wonderful speaker. Many of you have probably spotted Diana in Callala in her Bushcare uniform, pulling out invasive weeds and plants which have "escaped" from home gardens. As a member of Bushcare, Diana writes a monthly column about the regeneration of our bush. She also volunteers at the Council Native nursery and is a regular at the CCG where she looks after the compost heap and much more.



Some of our new members were interested in growing native plants and they live in Culburra where soils can be sandy or clay. Diana was able to name some species which would grow well depending on their soil type- Kangaroo Paw, Callistemons, Dianella (Flax Lilies), Lilly Pillies, Coastal Rosemary, Eucalyptus and Wattle. We loved what she said about crowding cuttings together in a pot as plants communicate with each other and they encourage each other to grow. She also said that natives can struggle in home gardens because they are not growing in their right environment.

How many of you have tried growing maidenhair fern as an indoor plant? I know I have and after a while it dries out, goes brown and is taken outside ( hopefully) to recover. Did you know that this plant is a native- *Adiantum aethiopicum* belongs outdoors and not in your lounge room as stated by Diana. Also known as the common maidenhair fern, it has widespread distribution, in Africa, Australia, Norfolk Island and New

**Page 22 – Callala Bay News**

Zealand. You see clumps growing around Callala in shady, boggy areas and it thrives.

At our June meeting, we celebrated Queen Elizabeth's 70th Platinum Jubilee. We planted 3 trees at the Anglican Church to commemorate this event. Sadly, the Queen has passed away after a lifetime of service and duty, but we will always remember that afternoon as members recalled seeing her Majesty when she visited Australia.

We meet on the 3rd Saturday from Feb. – November 1.30pm at Culburra Anglican Church, Penguin Head Rd, Culburra Beach. Please bring your own cup/ mug for afternoon tea. Membership fee is \$20 annually. Cheers to all, Doris Carpenter 44465631

### **Happy gardening**

## **Callala Medical Centre**

Spring is here, and I have personally very much welcomed the noticeable change in the weather. And as I look around the bay, more boats are out in the water, and more people are out enjoying the sun. With this in mind, I do want to remind everyone to slip slop slap their sun screen, remember your wide brim hat, and do not forget to have a yearly skin cancer check. A skin check will only take a few minutes, it can save a life, and is a service that is offered by myself at Callala Medical Centre. Otherwise, for a list of GPs who have taken additional training on this topic, visit [Locate a doctor on the Skin Cancer College Australasia's website](#). Please contact our friendly team if you have not had a skin check in recent time, we are welcoming new patients.

In other news, we are grateful for the patience from our patients as we are building a new consultation room, with plans to attract a new GP to our little town. We are also doing a bit of spring cleaning of our booking processes, and soon (if not already by the time this is printed) you will be able to book your appointments via an online platform called Hotdoc, as well as via phone the traditional way.

Dr Zhou,  
Callala Medical Centre



**Vinnies**

**CALLALA BAY**

**SHOP**

- **High quality second-hand items**
- **Clothing, bric-a-brac, books, linen, beach towels, toys, games, DVDs, jewellery and much more!**

## **VOLUNTEERS NEEDED**

**YOUR TIME IS THE MOST VALUABLE  
GIFT YOU CAN GIVE.**

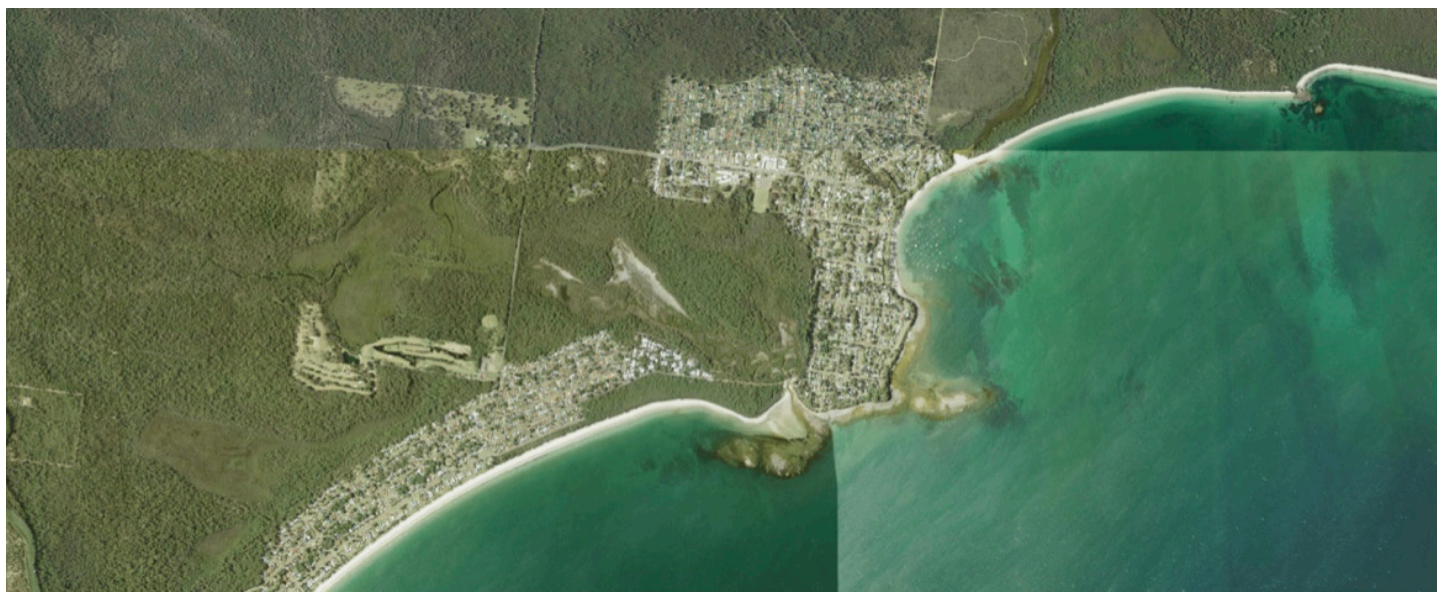
For details of how you can help,  
visit [www.vinnies.org.au](http://www.vinnies.org.au) or pop into the shop  
for an application pack.

Find us at: **59 Emmett St, Callala Bay**

Opening hours: **Monday to Friday - 8.30am to 4pm,**  
**Saturdays - 8.30am to 2pm** (during summer/peak times only)

**We welcome donations of non-bulky items during opening  
hours. For pickups, please call 4421 7244.**

# CALLALA - Shared User Path Network and Road Rehabilitation Community Consultation



Shoalhaven City Council is designing a Shared User Path (SUP) and road rehabilitation for Callala and Callala Beach Road. The overall project is split into multiple stages to enable a staged delivery.

The Round the Bay Walking Track is the scenic shared pathway between Callala Bay and Vincentia providing a picturesque journey to explore and discover the beauty of Jervis Bay. Council's shared path network aims to encourage pedestrian and cycling activities and support active lifestyle opportunities.

The Round the Bay Walking Track is being constructed in stages and Council is progressing designs for future stages of the path. The stages being designed fill a gap between Callala Beach Road and Griffin Street in Callala Beach. It includes a beachside path along Greenway Road to Lennox Road, and a path along Lennox Road to link up with the existing path along Griffin Street.

Initial investigations have also begun in planning for an extension of the shared path along Quay Road to link up with the existing path on Myola Road.

Additionally, Council is proposing to provide a Shared User Path from the existing carpark at the intersection of Callala Beach Road and Greenway Road to Callala Public School in Callala Bay, establishing a second pathway connection

between these two townships. The project also includes the extension of the path network along Sheaffe Street, from the existing path infrastructure at Lackersteen Street to the cul-de-sac. Once completed, this path will provide a valuable direct link between Callala Beach and the Callala Bay shops.

## Shared User Path and Crossing Locations:

- Callala Beach Road – from Greenway Road to Emmett Street.
- Emmett Street – from Callala Beach Road to the existing path infrastructure at Callala Public School.
- Emmett Street – pedestrian crossing across from Callala Bay Shops.
- Greenway Road – from Callala Beach Road to Lennox Road.
- Lennox Road – from Greenway Road to existing path infrastructure at Griffin Street.

## Road Rehabilitation:

Callala Beach road is proposed to be upgraded between Roskell Road and Emmett Street. Works along Callala Beach Road involve road widening, providing shoulders and clearance requirements to road-side obstacles. The upgrade will improve the road condition and safety for all road users whilst providing an off-road SUP along the road. Callala Beach Road may be subject to early intervention on the pavement works due to disaster funding available to Council.



## Timeframe:

The project is currently in the concept design phase with the road rehabilitation to progress. Future funding to progress the shared user path project will be sought through grant opportunities.

Council is inviting the community to provide feedback on the proposed works to assist with decision-making during the development of the project. Please visit our Get Involved website to review the concept design and provide your feedback by the 30th of September 2022.



## Extended Bus Timetable for Callala

Adam Darcey from Stuart's Coaches has advised Transport NSW has extended bus services throughout the Shoalhaven.

Stuart's Coaches will now be providing an early morning service, starting at the Callala Beach shops at 05:51am, travelling directly to the Callala Bay shops, then to Bomaderry Railway Station to meet the 6:43am train.

A return service at 17:17(5:17pm) will follow the bus route as required. The revised timetable is available at <https://stuart-coaches.s3.ap-southeast-2.amazonaws.com/timetable.pdf>.

A copy is also included in this Newsletter.

# YOUR AD HERE

Advertise Your Business With  
The **CBnews** Today!

Contact the Editor for more info

[editor@callalabaycommunityassociation.com](mailto:editor@callalabaycommunityassociation.com)



## On Your Side.

I am your representative in the Australian Parliament. I can help with issues like Medicare, Centrelink, aged care and pensions, the NDIS, Veterans' Affairs and community grants.

I can also arrange special birthday and anniversary messages, and information for pensioners and seniors. You can contact me on 4423 1782.

*Fiona Phillips*



**FIONA PHILLIPS MP**

FEDERAL MEMBER FOR GILMORE

☎ (02) 4423 1782

📍 3/59 Junction Street Nowra NSW 2541

📍 1/6-8 Orient Street Batemans Bay NSW 2536

✉ [Fiona.Phillips.MP@aph.gov.au](mailto:Fiona.Phillips.MP@aph.gov.au)

📘 Fiona Phillips MP 📧 @fiboydphillips

🌐 [FIONAPHILLIPS.COM.AU](http://FIONAPHILLIPS.COM.AU)

ADVERTISEMENT

Authorised by Fiona Phillips, ALP, 3/59 Junction Street Nowra

## Coastal Management Program drop-in session for Callala Bay and Beach

A special drop-in session for Callala Bay and Beach residents about the Open Coast and Jervis Bay Coastal Management Program (CMP) was held on Wednesday 7th Sep 22. The consultant responsible for the project, staff from the NSW Planning Department and an officer from Shoalhaven City Council were present to answer questions, discuss the process for obtaining input from interested community members and listen to community concerns.

A good turnout of over 30 people attended and many stayed for the full two hours, completing the surveys and talking to those responsible for putting the CMP together. Residents from Callala Beach and Callala Bay attended, and many said that they felt that they had been listened to and appreciated the assistance they received to enable them to complete the on-line survey on the day.

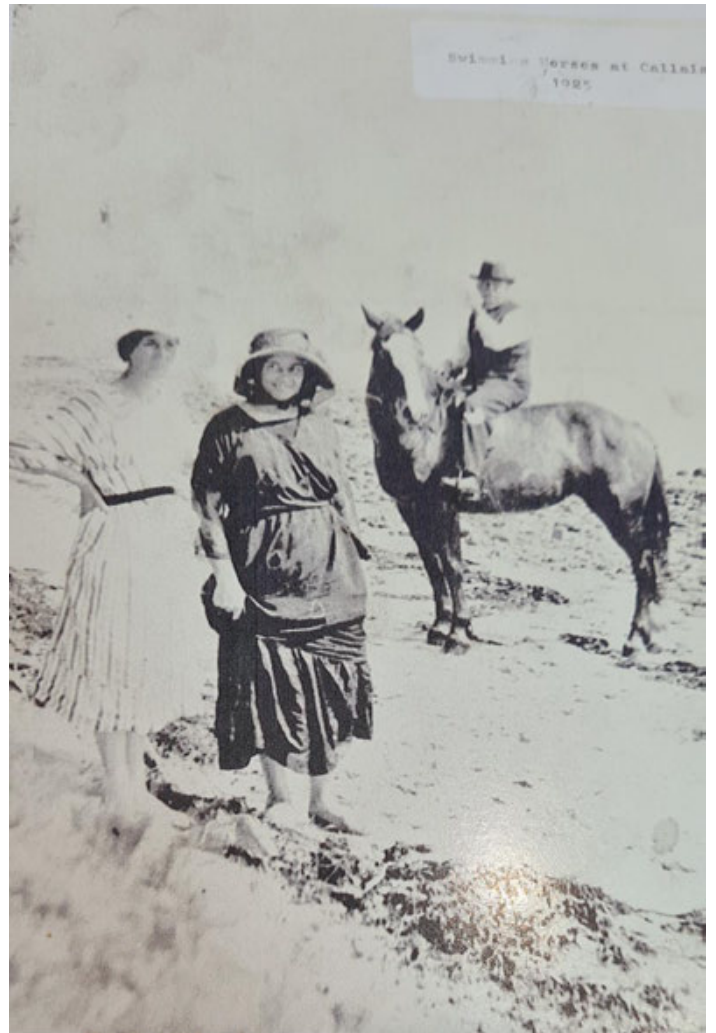
The most interesting thing was reviewing the maps for our area which showed the actions so far developed to manage our coastline for the next 10 years. We took the opportunity to comment on the actions identified and to add potential actions to the list.

You can still provide feedback on the actions developed by going to [getinvolved.shoalhaven.nsw.gov.au/open-coast-and-jervis-bay-cmp](http://getinvolved.shoalhaven.nsw.gov.au/open-coast-and-jervis-bay-cmp).

This is your chance to have your say and the CBCA encourages you to do so. There may be other hands-on sessions in the future and we will keep you updated as appropriate.

If you would like more information about the CMP please contact Nigel Smith - Lead Coastal Management SCC:  
[nigel.smith@shoalhaven.nsw.gov.au](mailto:nigel.smith@shoalhaven.nsw.gov.au)

## From the archives



A photo from 1925 (we think) Titled Swimming the horses Callala Creek.

If you know who these people are or even the name of the horse, the CBCA would love to hear from you.

We are interested in sharing Callala Bay's history with the community.

We will be including some stories and photos in future newsletters which we hope readers will enjoy.

If you have photos and stories which give an insight into the development of Callala Bay, the CBCA would love to see them.

Come to a CBCA meeting and share our history.

## Tea Cosy Competition

At the Callala Markets on Sat 10 Sep 22, the judging of the Tea Cosy competition took place under the watchful eye of Sandra Irwin. Over 40 entries were on display and other than proving the art of crochet and handicrafts is still alive, a very generous \$273.25 was raised for the Callala Public School. To all those who contributed to provide the most imaginary designs, worrying over crochet needles and other tea cosy-making materials, a heartfelt thanks for making the event a great success.



Just a few of the entries



The winning entry for a child



and the winner is Mrs Potts - Congratulations



### Callala Gallery

15 Callala Beach Road, Callala Beach

Artworks by **Local Artist Roslyn Chatham** in Oil, Acrylic, Watercolour, Pastel, Mosaic, Mixed Media, Resin Work.

Landscapes, Seascapes, Local Scenes, Fantasy Art, Portraits, Commissions.

**Open by Appointment Only**

**Phone: 44465770. Mobile : 0407465770**

**Email : Roslyn.chatham@bigpond.com**

**Callala Gallery on Facebook**

## Scammers

With a rising number of scams being reported in Australia each year, it's important you know how to recognise suspicious activity and understand what to do if you're targeted. Scammers are usually after your money or your personal details - never give them either.

Calls, emails, social media and texts are among the most common ways scammers will try and contact you. You can keep yourself safe by staying alert, staying calm, and asking yourself a few simple questions:

- Who is this person, do I know them?
- Why do they want my money or my personal details?
- Why do they want access to my computer or my phone?
- Why do they want me to click on a link or download a file?

When you're transacting online, it's so important that you keep your personal details secure. You should never share your e-banking security code or PIN, and you should never send money to someone you don't know.

## Remote access scams

A remote access scam is when a scammer contacts you via phone, text or email claiming to be from a company you may be familiar with such as your bank, a utility company, telecommunication services (such as NBN) or a government agency.

Scammers will trick people into gaining access to their phone or computer providing them full access to personal information from a remote location. Scammers will try to convince you to install software on your computer or device to gain access to your personal and financial information.

### How to protect yourself

- Never provide a caller with remote access to your computer.
- Never provide your personal details to a caller you don't know over the phone.
- Tip: if in doubt, hang up and call your service provider directly via their publicly listed number.
- Never share your login information with anyone over the phone, via text or email (we will never ask you for login details), including one-time passwords or security tokens.
- Make sure you complete regular software updates on your devices and ensure that anti-virus software installed on devices is up to date

*With thanks from Bendigo Bank*



FREE

# Pre-Loved Clothing & Book Stall

First Saturday of the Month  
at the  
Callala Community Centre

9.30am to 12.00 NOON

Clothes in good condition can be dropped off at the stall (on the day only). If clothing can be delivered by 10am; this will allow them to be displayed.

Sponsored by the Anglican Church, Callala



## COMMUNITY CONTACTS

**Emergency Police Fire Ambulance: 000**

**Nowra Police Local Area**

Command: **4421 9699**

Crime Stoppers: **1800 333 000**  
*(anonymous reporting)*

Police Assistance Line: **131 444**  
*(non emergencies)*

State Emergency Service: **132 500**

Jervis Bay Marine Park: **4441 7752**

Callala Doctor's Surgery: **4446 5350**

**Shoalhaven City Council**

General enquiries, business hours: **4429 3111**

Emergencies and after hours: **4421 3100**

**Justices of the Peace**

Howard Duncan: **4446 6535**

Robyn Hannan: **4446 4428**

Rev Sue Fisher: **0406 815 449**

Jill Lower: **4446 6281**

Dallas McMaugh: **0400 189 875**

Lorraine Taylor: **4446 5117**

**Culburra Beach & District Garden Club**

We meet every 3rd Saturday of month  
Feb-Nov at 1.30pm

**Venue:** Culburra Anglican Church  
Penguin Head Rd, Culburra Beach.

For more details contact

Doris Carpenter: **4446 5631**

**Culburra & Districts Community Health Service**

Visit the Op Shop and pick up a bargain!  
Proceeds help maintain the Medical Bus that transfers people to Nowra for medical appointments from Greenwell Point, Culburra Beach, Callala Bay & Beach, Currarong and Myola.

Please contact Culburra Pharmacy on **4447 2382** to arrange transport.

**Culburra Beach & Districts Men's Shed**

Every Monday and Wednesday from 9am to 1pm, beside the Banksia Community Hall, Fred Evans Lane, Culburra Beach (IRT entry).

More details contact Ray Sutton:  
**0499 452 095**

**Culburra Beach Orient Point Men's Shed Inc.**

**Location:** Old Scout Hall Cnr West Crest & Wollumboola Lane

Open 8:30am - 1pm Tuesday,  
Wednesday & Thursday

**All enquiries:**

John Castellan: **0498 023 781**

Max Ford: **0403 204 847**

### DISCLAIMER

*The Publisher, known as Callala Bay Community Association Incorporated, does not accept any responsibility or liability in any way whatsoever with regard to any of the paying advertisers contained in this newsletter. Additionally the views and comments of all reports submitted are the responsibility of the person/organisations submitting same, including those from SCC (Shoalhaven City Council), which are usually copied verbatim from correspondence and are included for your information. The reports do not necessarily reflect the views of the Publisher.*

# Truck & Forklift Driving School

*Desire Bhugon*

RMS Approved: LR, MR, HR, HC (Auto  
and Manual)

**OLDER DRIVER ASSESSOR**



Tel: 02 444 66861 Mobile: 0418 654 572 Email: [desdschool@bigpond.com](mailto:desdschool@bigpond.com)

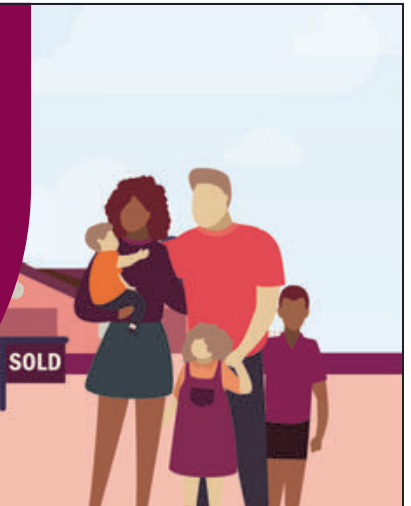
## Same house, fresh start

First home, second home, refinancing or renovating, you'll get everything you need and more with a Bendigo Complete home loan.

Come home to a low rate loan.

Chat to a home loan specialist today or search Bendigo Bank Home Loans.

 Community Bank · Nowra & District 02 4422 7574



 **Bendigo Bank**

Terms and conditions, fees, charges and lending criteria apply. All information including interest rate is subject to change without notice. Full details available on application. Credit provided by Bendigo and Adelaide Bank Limited ABN 11 068 049 178 Australian Credit Licence 237879. (1676246-1704263) OUT\_13120216 , 10/03/2022



**Vanessa Middleton**  
Licenced Real Estate Agent  
0492 945 367  
[vanessa.middleton@ljhooker.com.au](mailto:vanessa.middleton@ljhooker.com.au)  
[nowra.ljhooker.com.au](http://nowra.ljhooker.com.au)

 **LJ Hooker**

**Vanessa** is a well known face in our community, a **local of Callala for 28 years** and working locally in real estate for the past **17 years** with extensive knowledge and insight into the local market. Her dedication to customer service, innovation, honesty and openness have been the cornerstones of Vanessa's record of success over many years. Known for her friendliness, understanding, enthusiasm & strong negotiation skills.

**A consistent number of repeat referrals is a testament to her expertise.**

**If you are looking for a local in real estate for buying or selling contact me today.**

# Happier, healthier pets

South Coast Veterinary Services is your local, independent and exclusive veterinary care provider.

Our complete range of in-home and mobile pet services take the stress out of trips to the vet ... for happier, healthier pets.



**SCVS**

South Coast  
Veterinary  
Services

Book a visit, manage prescriptions and pay online. Get in touch for more details.

Dr. Glynis Kuipers

0412 319 110

[office@southcoastvet.com.au](mailto:office@southcoastvet.com.au)

[www.southcoastvet.com.au](http://www.southcoastvet.com.au)