

# CALLALA BAY NEWS

JUNE 2016

*Monthly newsletter of the Callala Bay Community Association Incorporated*



Photograph courtesy of Teresa Bealey

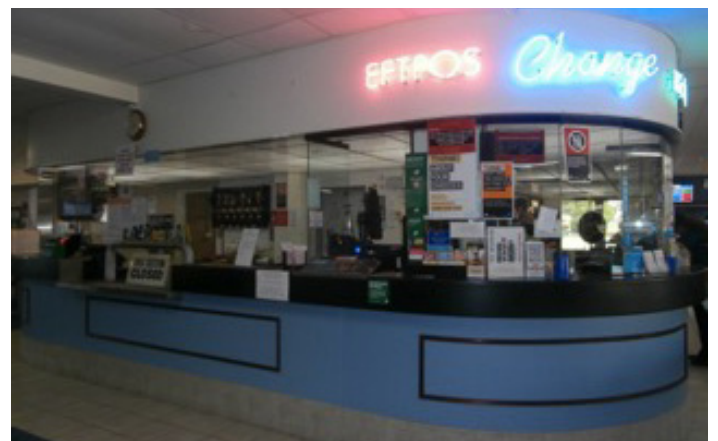
## CALLALA RSL COUNTRY CLUB RENOVATIONS

**THE 'RENO' OF OUR CLUB...  
CALLALA RSL COUNTRY CLUB LTD...  
COMMENCED EARLY APRIL 2016.**

Callala RSL Country Club Ltd, situated at 43 Callala Bay Rd, recently underwent a massive interior refurbishment mainly to the Bar and TAB areas. (This work is still ongoing as this issue goes to press.)

A big Thank You to all the volunteers who rallied around during this difficult time, to help in any they could to assist in the uninterrupted trading of the Club. To anyone who has not attended the Club for awhile, please drop in and have a look.

Any feedback can be directed to the Board of Directors.



*More photo's on page 31*

# WHAT'S ON? @ THE PROGRESS HALL

BOOKINGS JOANNE MULLER 4446 4313

<b>TUESDAY</b>	10am - 12pm	<b>CRAFT</b>	Yvonne Fowler	<b>446 6280</b>
<b>TUESDAY</b>	2:30pm - 4:30pm	<b>FOLK DANCE</b>	Maureen Petherick	<b>4446 6550</b>
<b>THURSDAY</b>	6pm - 7:30pm	<b>YOGA</b> Beginners welcome Mats supplied www.roamingyogis.com.au	Ann Smallwood	<b>0405 102 234</b>
<b>FRIDAY</b>	3:30pm - 5pm	<b>TENNIS LESSONS</b>	Garry O'Connor	<b>4464 1428</b>

Tennis court bookings can be made at Callala First National Real Estate - 58 Boorawine Terrace, Callala Bay or call on 4446 4313. Please make your bookings during office hours so that the keys can be made available (*available in daylight hours only*).

The hall is also available for function bookings including weddings, birthdays, baby showers etc.

## CALLALA COMMUNITY CENTRE

With it's newly landscaped gardens, in the heart of Callala - It's the place for your next function.

**Facilities include:**

**A fully equipped kitchen • An elevated stage and sound system • Off street parking  
Catering and seating for 120 people • Flexible hire times and reasonable rates**

### What's On Regularly at the Centre:

<b>Callala Christian Community Church</b>	<b>Sunday: 9 - 11am</b>
<b>Kids Korner</b> - before and after school care	<b>Mon-Fri: Call Jane on 4446 4218</b>
<b>Friends of Callala</b> - over 50's social group	<b>Mon: 12pm - 3pm - 4446 6535</b>
<b>Yoga</b> email: info@samana.yoga	<b>Tues: 6:15 - 7:30pm and Thurs: 9:15 - 10:15am</b>
<b>Callala Bay Community Assn. monthly meeting</b>	<b>2nd Wed of month: 7:30pm</b>
<b>For all bookings and enquiries call Jane: 4446 4218 - Emmett Street, Callala Bay (Opposite Bay Village Shops)</b>	

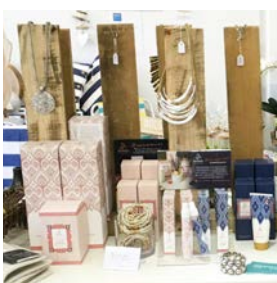
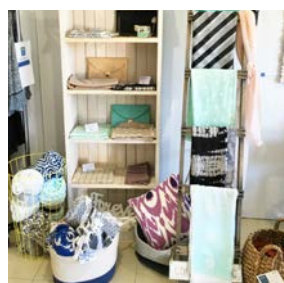
FASHION • JEWELLERY • GIFTS • HOMEWARES

Spoil yourself,  
family & friends!

Shop 16/55 Emmett Street Callala Bay Shopping Centre  
(next to The Sixth Sense café). **Ph. 0414 525 453**



facebook.com/barefootbeachcallalabay



# CALLALA BAY NEWS

*A monthly newsletter of the  
Callala Bay Community Association Inc.*

## **PRESIDENT & VICE PRESIDENT**

Nominations Open!

### **TREASURER**

Howard Duncan  
4446 6535

### **SECRETARY/PUBLIC OFFICER**

Margaret Duncan  
4446 6535

### **MINUTES SECRETARY**

Sandra McKenzie-Clark  
4446 5280

### **COMMITTEE MEMBERS**

Pauline Townsend  
4446 6733

Jim Townsend  
4446 6733

James Morris  
4446 6037

John Green  
4446 5902

Ray Plevy

### **EDITOR**

Joan Lewis  
4446 5368

lewisjr@bigpond.com

Callala Bay Community Association  
PO Box 14 Callala Bay 2540

# FRIENDS OF CALLALA

The Annual General Meeting of 'Friends' was held on Monday May 9 with the following executive elected:

**President** - Elaine Coid

**Secretary** - Margaret Duncan

**Treasurer** - Annette Wilkinson

At the meeting we looked back on what had been achieved over the last year – outings to places of interest and shows at the Shoalhaven Entertainment Centre, lunch at different restaurants every 6 weeks, friendship and fun, not to mention parties for Xmas in July and Christmas. We have even enjoyed learning how to play croquet.

Friends of Callala is a social group who are just that 'Friends of Callala'. None of us knew each other before we arrived in the area but we quickly became friends. It's a great opportunity to meet the locals and get to know a little about Callala, over a quiet cuppa and friendly supportive company.

We meet each Monday at 12 at the Callala Community Centre in Emmett Street. If it's a little daunting for you to walk into a room of strangers, give me a ring, we can have a chat and I can be there to welcome and introduce you

*Margaret Duncan - 4446 6535*

## INDEX

Friends of Callala.....	Page 3
CB Community Assn. Report .....	Page 5
Bush-Care News.....	Page 7
Fishing .....	Page 9
Garden Club.....	Page 11
Callala Men's & Vet's Golf.....	Pages 12-13
Noel Wellington's Visit.....	Page 15
Police Stuff.....	Page 17
Know Your Bible.....	Page 18
The Fairy Godmother's New Quilt..	Page 19
Thought for June.....	Page 21
School Happenings.....	Page 23
Callala Men's Bowls.....	Page 24
Callala Women's Bowls.....	Page 25
Historical Pieces .....	Pages 32-33
Brumbies Roundup .....	Pages 34

## Note from the Editor:

If you are a member of our Association and have an issue or concern needing to be raised, why not send it to the Editor. It needs to be brief and appropriately worded with the intention of having it published.

We would like to thank our previous editors for their informative and dedicated compilation of articles and their generous time involved in creating a news bulletin of local interest.

We hope that you will enjoy this and future issues - that will return to its former format and size.

*Joan Lewis and the new editorial team - CBCA*





# Pottenger & McGhee Solicitors

---

## Nowra & Huskisson

Conveyancing | Wills & Estates | Business Law | Leases

We look forward to meeting you and helping you with your legal needs.

Level 1, 25 Kinghorne Street, Nowra Phone 02 4421 6166  
Level 1, 64-66 Owen Street, Huskisson Phone 02 4441 7973  
Email: [pbetts@potmac.com.au](mailto:pbetts@potmac.com.au)

If you can't come to us, we can come to you!

## OUR COUNCILLORS



**Mayor - Cllr Joanna Gash**  
M: 0427 160 170  
[Jo.Gash@shoalhaven.nsw.gov.au](mailto:Jo.Gash@shoalhaven.nsw.gov.au)

Shoalhaven City Councillors welcome comments and information from the general public. They can be contacted on the numbers and email addresses below. For general enquiries phone 4429 3111

### WARD ONE



**Cllr Andrew Guile**  
M: 0412 287 706  
[andrew.guile@shoalhaven.nsw.gov.au](mailto:andrew.guile@shoalhaven.nsw.gov.au)



**Cllr Lynnette Kearney**  
M: 0478 882 650  
[Lynne.Kearney@shoalhaven.nsw.gov.au](mailto:Lynne.Kearney@shoalhaven.nsw.gov.au)



**Cllr Jim McCrudden**  
M: 0478 882 684  
[jmccrudden@shoalhaven.net.au](mailto:jmccrudden@shoalhaven.net.au)



**Cllr John Wells**  
M: 0412 676 159  
[John.Wells@shoalhaven.nsw.gov.au](mailto:John.Wells@shoalhaven.nsw.gov.au)

### WARD TWO



**Cllr Karen Anstiss**  
M: 0478 876 510  
[Karen.Anstiss@shoalhaven.nsw.gov.au](mailto:Karen.Anstiss@shoalhaven.nsw.gov.au)



**Cllr Clive Robertson**  
M: 0478 882 685  
[Clive.Robertson@shoalhaven.nsw.gov.au](mailto:Clive.Robertson@shoalhaven.nsw.gov.au)



**Cllr Jemma Tribe**  
M: 0413 050 992  
[Jemma.Tribe@shoalhaven.nsw.gov.au](mailto:Jemma.Tribe@shoalhaven.nsw.gov.au)



**Cllr Greg Watson**  
M: 0412 210 979  
[watsong@shoalhaven.nsw.gov.au](mailto:watsong@shoalhaven.nsw.gov.au)

### WARD THREE



**Cllr Amanda Findley**  
M: 0434 151 730  
[amanda.findley@shoalhaven.nsw.gov.au](mailto:amanda.findley@shoalhaven.nsw.gov.au)



**Cllr Allan Baptist OAM**  
M: 0434 560 096  
[Allan.Baptist@shoalhaven.nsw.gov.au](mailto:Allan.Baptist@shoalhaven.nsw.gov.au)



**Cllr Mark Kitchener**  
M: 0478 882 649  
[Mark.Kitchener@shoalhaven.nsw.gov.au](mailto:Mark.Kitchener@shoalhaven.nsw.gov.au)



**Cllr Patricia White**  
M: 0447 416 329  
[Patricia.White@shoalhaven.nsw.gov.au](mailto:Patricia.White@shoalhaven.nsw.gov.au)



# CALLALA BAY COMMUNITY ASSOCIATION (CBCA) REPORT FOR JUNE 2016

Mayor Jo Gash and Counsellor Patricia White were welcome visitors to our May meeting. Jo advised the meeting, that the relocation of the Tourist Information Centre to the Shoalhaven Entertainment Centre was a temporary measure, and that Council intends the area, where the T.I.C. is currently located, will be turned into a Gate Way Park, with toilets, open spaces, and community gardens. Jo went on to outline the future vision for Nowra, which included further development in Egans Lane and installation of pontoons on the river.

James Morris hosted the CBCA meeting, when they met with noted indigenous artist Noel Wellington, to discuss the installation of message poles on the Callala Headland. (See James report in this issue) James and Howard Duncan represented the CBCA at the opening of the Callala Beach to Myola path, which features traditional carved logs bench seats by Noel.

In response to CBCA raising concerns about pedestrian safety, SCC have advised that a raised pedestrian crossing will be installed at the school crossing. In response to representation to SCC and Shelley Hancock, Member for the South Coast, regarding a pedestrian crossing in Emmett St from the shopping centre to the skate board park and sporting complex, SCC have advised they will investigate further and will conduct a survey of the need "closer to the summer months when pedestrian activity is typically much higher". Council have also requested Nowra LAC to increase random police patrols to carry out ongoing enforcement patrols in the area. CBCA asks you to be vigilant and report ALL instances of anti-social road behaviour so we can make our roads safer. SCC also advise that erosion protection has been scheduled for the Callala Bay Sailing Club and surrounds. Ann Sudmalis, MP for Gilmore, advises she has obtained blackspot funding for the intersection of Forest and Callala Beach Rds. following a number of accidents there.

Repairs to the picnic tables at Bicentennial Park and pruning of the bushes near the Sheaffe St showers has been completed, after the CBCA raised concerns following the April meeting.

The May meeting also approved the retention of the name of the newsletter as Callala Bay News, and was advised that we had engaged the services of a graphic designer to assist with the conversion from the A4 format to and A5 format. The new editorial team is Joan Lewis, Dianne Croucher, Sandra McKenzie-Clark and Lyn Byrne. Submissions to the newsletter can be made to Joan at lewisjr@bigpond.com. The committee thanks Cat Holloway for her efforts in setting us in the right direction with the new format. Cat was unable to continue in her role due to other commitments. We ask that our members and advertisers bear with us during the transition period as we revamp the newsletter. Your suggestions of course would be appreciated.

**OUR NEXT MEETING WILL BE  
WEDNESDAY JUNE 8TH AT THE CALLALA  
COMMUNITY CENTRE IN EMMETT ST  
COMMENCES AT 7.15 FOR 7.30 START.**

**COME ALONG HAVE YOUR SAY AND  
SHARE A COFFEE WITH US.**

## MR MIKE SPARKLE BRIGHT

ABN: 50 534 685 256

### *Professional Window Cleaner*



All Types of windows cleaned  
including Fly Screens, Window &  
Door Frames Tracks and Runners

We can offer our customers Solar  
Panel Cleaning (*single story only*)

**Very Reliable • Free quotes**

**Ring Mike on:  
0406 467 026 or 02 4446 6684**

# CALLALA RSL COUNTRY CLUB

Come in & check out our  
latest refurbishments



## MONDAY - FREE TRIVIA - 6:30PM START

### GOLF COURSE

Open Everyday (02) 4446 5112  
Information and Bookings  
callalagolf@bigpond.com  
Extensive TAB facilities

### FRIDAY

Fitness Exercise  
Class from 11am



## RAFFLES

### TUESDAY

FREE Meat Raffle - Every half hour from 4pm until  
6.30pm - Get your FREE tickets at the Bar with  
ANY purchase after 3pm.

### THURSDAY

Bowlers Extensive Raffle from 6pm with great  
prizes Lucky Member's Badge Draw

### FRIDAY

Meat Mart Best value Friday night in town Meat  
Tray prizes with value over \$1000 - Tickets on sale  
6pm Draw commences approx 7pm

### SATURDAY

**Fisho's Raffle** From 12 noon to 1.30pm

## CALLALA BEACHSIDE BISTRO

Mon - Wed 11.30am open  
Thurs - Friday 10.00am  
Sat-Sun 8.00am

## TUESDAY

Members Good Time Happy Hour  
4pm to 5pm - All Drinks Discounted.  
Darts - Comp & Social from 7pm

## WEDNESDAY

**NPL POKER - Only \$2 to Play**  
7PM Start - Ca\$h prizes and regional  
tournament tickets to be won every week

## THURSDAY

**Bingo** - Eyes down at 11am

## BOWLS

**Monday** - Indoor starting @ 12pm

**Tuesday** - Womens bowls from 9.30am

**Wednesday** - Mens social bowls  
12.30pm from 1pm

**Thursday** - Mixed Social Bowls -  
Ring for details

**Friday** - Twilight Bowls from 4.30pm  
\$5pp

**Sunday** - Social bowls from 1pm \$6,  
Jackpot prizes

**Ph 4446 5313**

43 Callala Beach Rd, Callala  
[www.callalarslcountryclub.com.au](http://www.callalarslcountryclub.com.au)





# CALLALA BUSHCARE GROUP

*Lesley Oliver*

This month Bushcare members have been delighting in the display of autumnal colours in the surrounding bush, especially the unmissable golds and russets of the Black She-oak. Unlike the northern hemisphere exotics which change colour in autumn prior to shedding foliage and shutting down for winter, the Black She-oak's colour is from the masses of pollen produced on the male trees at this time of year.



The Black She-oak (*Allocasuarina littoralis*) is a dioecious species, with male and female flowers on separate plants. Female trees have small bright red flowers which develop into cone-like fruit after fertilisation. Its Latin name comes from the Malay word for Kasuari, referring to the similarity of the plant's fine foliage to Cassowary feathers.

The Black She-oak is an important feed tree for the Glossy Black Cockatoo which is listed as Vulnerable in NSW. Many small insect-eating birds also regularly glean the foliage for prey.



Bushcare also managed some working bees during the month: - some more follow-up weeding at the Bangalay Sand Forest near Benton Sands; and some more Buffalo weeding and poisoning at Bi-Centennial Park, along with more planting of

tubestock. The drier conditions will be more of a challenge for the plants but we always choose species suited to the area, and make liberal use of water crystals when we plant. Meanwhile at Boorawine Creek, one of our members has been weeding Buffalo from the terrace side bank, and experimenting with mangrove seedlings at the mouth of the creek.

Several other Bushcare groups in the Shoalhaven have begun mangrove rehabilitation projects in view of the considerable benefits derived from healthy mangrove ecosystems. It has been estimated that 80% of seafood species depend on mangroves. Mangroves also stabilize shorelines and protect them during extreme weather events. By filtering sediments, nutrients and pollutants, they act as coastal kidneys, cleaning runoff before it enters marine ecosystems such as reefs and seagrass beds. And if that wasn't enough, they are also exceptional carbon stores, storing fifty times more soil carbon than their land-based counterparts.



We are interested to know the original flow of Boorawine Creek before it was diverted and the drain system created. We hope that some long-term resident may be able to tell us how the creek was re-shaped when the area was subdivided for housing, and whether the open storm water drainage system was engineered at the same time or later.

If you have any information, please contact **Diana** on **0419 531902**

The Callala Bushcare Group has sessions every Tuesday morning between 8 and 10 am. If you would like to join us please contact:

**Bryan Lenne**

**PH: 4446 4157**

**scribblybark@gmail.com**

# AMM Accounting & Associates

ABN: 34 919 202 132

Accountant & Registered Tax Agent

**17 Years specialising in Individual, Business and Company Accounting**

BAS & IAS Lodgements • Self Managed Super Funds • Company Incorporation

*I can assist individuals and businesses who have outstanding lodgements or current ATO debts*

**PLEASE CALL FOR AN APPOINTMENT OR INITIAL ADVICE**

**Angela McCarthy** MTMA, JP

PO Box 4085 Nowra East NSW 2541

**Phone: 0409 421 755 or 4447 8068**

Email: [nowra@ammaccountingpicton.com.au](mailto:nowra@ammaccountingpicton.com.au) or [amconsultancytyld@bigpond.com](mailto:amconsultancytyld@bigpond.com) (direct)

[www.ammaccountingpicton.com.au](http://www.ammaccountingpicton.com.au)



/ammaccountingnowra

## Need a reliable Home Handyman?

**Tiling Repairs — Painting — Gyprock Repairs— Timber Decks & more!**

**Ask about our affordable kitchen makeovers**

**FREE QUOTES**

**0427 899 417**

**Fully insured—over 30 yrs experience**



Enrolment for children 2 to 5 yrs

Opened 8am – 4.30pm

University & TAFE trained teachers

'School Readiness' curriculum

Fee rebates available to eligible families

Awarded ***'Exceeding National Quality Standards'*** by the NSW Department of Education and Communities.

For further information please call us on **4446 6089**



# FISHING REPORT

Hi Fellow Fishos,

Here we go again. I will try to make regular contributions again. However as I will be travelling north shortly the contributions will not be of a local nature. I will leave it up to the Editor to put them in the newsletter or not.

Things seem to be calming down now after a very good summer. There were plenty of marlin caught both offshore and off the shore.

A very disappointing episode occurred recently. The Callala RSL Club, George Doyle and myself went to a lot of trouble to help a guy weigh his marlin, caught off the rocks. It weighed from memory just over 90kgs. The same afternoon the back half of a marlin was dumped in the circular garden at the boat ramp. It shows a lack of respect for the fish, for the people who use both the ramp and the park facilities and lets down all other fishos who do the right thing! It may not have been the same guy, I hope not.

My son Darren was down from Weipa recently. We got two days out marlin Fishing. Yours truly caught one the first day about 40/45kg. Darren got one about the same size the next day. Both were black marlin, Darren had hoped to catch a striped marlin as they do not get them at Weipa. Both fish were tagged and released. I have included a photo of yours truly with fish.



The squid have not been prolific but if you put the effort in you should get a feed. Mainly due to their size. Myself and daughter Gabrielle caught two one day and ten the next and they were mostly large ones.

June 2016

We took our grandson, Sam out with us twice, he will be three next September and he loved it. They are back in Melbourne now and when she asks Sam if he would like to go to the park, he says No! go boat with Pa.



## Another fisho/boatie is born!

There have been reports of some very good quality bream being caught, both off the beach and from boats. A couple of friends have caught some beauties from Callala beach using pink nippers.

I have included a photo of one caught by Jason Delaney's son Kai. It was caught by Kai off Callala reef using a piece of salmon.

Well that is it for this month. Till next month, good health and good fishing.

Can now **GO FISHING**, no shop, **WHOOPEE!**

*Jon Lee*



**Tony & Natalie Dunstan**

**Ph: 4446 6544**

18/55 Emmett Street  
Callala Bay 2540

***"Your Local  
Family, Country  
Style Butcher"***



## Yoga with Judith for a balanced life

Fun & Friendly Yoga classes  
held in Callala Bay

For further information, see  
**[www.yogawithjudith.com.au](http://www.yogawithjudith.com.au)**

or contact Judith on **0408 865 437**  
or email [judith@yogawithjudith.com.au](mailto:judith@yogawithjudith.com.au)

***Lauren Sams***

**INTERNATIONALLY CERTIFIED MEDIUM**

*"One of the best parts of my job is helping to bring  
closure and healing to those who have lost loved ones"*

FULL DETAILS & REVIEWS: 

**[www.laurensamsmedium.com](http://www.laurensamsmedium.com)**

CALLALA BAY & HUSKISSON



BOOKINGS:

**0416 301 575**



## ***CALLALA GALLERY***

*15 Callala Beach Road, Callala Beach*

All Artworks on display at the  
Gallery are For Sale.

Paintings done on commission.

Callala Gallery on facebook

[www.artclassesnowra.com](http://www.artclassesnowra.com)

### **ART CLASSES**

for beginner to advanced, for Adults and  
Children. **In: Acrylics, Oils, watercolours,  
drawing and Mixed Media**

**School Holiday Workshops**

**Phone: 4446 5770 or email:  
[roslyn.chatham@bigpond.com](mailto:roslyn.chatham@bigpond.com)**

Borg Power Solutions Pty Ltd T/A



**David Borg  
ELECTRICAL & SOLAR**

Electrical Lic 231840 C

**Accredited Service Provider**

- ◆ Grid Connect Metering
- ◆ Solar Power Installations
- ◆ New Electrical Work
- ◆ Hot Water Repairs

*2 Cronin Place Callala Bay*

**Mobile: 0412 939 709**

Phone: 4446 5996 Fax: 4446 6610

[info@borgpowersolutions.com.au](mailto:info@borgpowersolutions.com.au)

**[www.borgpowersolutions.com.au](http://www.borgpowersolutions.com.au)**

## *Torrens Embroidery*

**T: 4446 5368 - Joan**

I can machine embroider designs on your  
fabric or mine to produce a unique gift for  
someone special or just for yourself.

Let me know your  
thoughts/ideas  
and we can create  
together.

Email:  
[lewisjr@bigpond.com](mailto:lewisjr@bigpond.com)





# CULBURRA BEACH & DISTRICTS GARDEN CLUB ROUNDUP

Hi everyone, I have been given the opportunity to write each month about our garden club hoping that you will join us and eventually become a member. We held our AGM in March and a new committee was elected including a new President.

We meet every 3rd Saturday of the month( except December and January) at the Banksia Senior Citizens Hall IRT entrance, Culburra Beach at 1.30 pm starting time. Our meeting includes afternoon tea, raffles, a trading table where you can purchase plants , a Display table where you can show off something from your garden and guest speakers. Cost of membership is \$10 a year.

At the April meeting, guest speaker was Mr Stig Pedersen from Booderee National Park. Stig works in the botanic gardens situated in Booderee National park. These botanic gardens are the only Indigenous owned botanic gardens in Australia- possibly in the world and half the work force are Aboriginal. The gardens were established predominantly to grow native plants. One interesting fact that we learnt is that a new species of Banksia was discovered in 2008 at Vincentia –aptly named Banksia Vincentia and it's the world's rarest banksia. Twelve plants were found but unfortunately there are only 6 left due to backburning. They have propagated 38 plants in the nursery which will be ready for planting this Autumn. Banksias, members of the Protea family, have unique

flower displays. Banksias usually grow best in well drained soils in a sunny position. They range from low-growing shrubs to trees up to 25 m tall. Some species, for example Banksia ericifolia and Banksia menziesii , are known for their spectacular flower heads. The flower heads produce large volumes of nectar and attract many birds and small mammals to feed on them.

As you walk along in the Callala Bay area, you can spot many species of banksia growing happily in home gardens. They make excellent cut flowers, as they have a long vase life and excellent range of colours and sizes.

Happy gardening and hope to see you at our next meeting.

**Doris Carpenter (secretary) 4446 5631**



*The Point Gallery & Craft*

**OPEN: Fri-Mon 10am-4pm**

All Art & Craft Locally Made

76b Greenwell Point Road

**CULBURRA BEACH**

**PRESCHOOL**

**4447 3838**

2 to 5 years

**Sunshine Street  
Culburra Beach**

## NEW EXTENDED HOURS FROM JANUARY 2016 8AM TO 6PM

- ◆ Individualised early learning programme by University & Diploma trained staff.
- ◆ Morning & afternoon tea are provided **FREE**.
- ◆ Families can receive CCB (Child Care Benefit) PLUS the 50% Child Care Cash Rebate.
- ◆ Families that have a Health Care Card or receive 'Family Tax Benefit Part A' will pay as little as **\$14.55 per day** after receipt of 100% CCB plus the 50% cash rebate.
- ◆ Open 50 weeks of the year - visits welcome.

# CALLALA MEN'S & VET'S GOLF CLUB NEWS

*Bill Downton*

## **Tuesday 3rd Vets**

### **COUSINS WINS MUG**

Perry Cousins was all smiles after winning the May Monthly Mug at Callala on Tuesday with a good Score of 64 Nett.

Runner Up ,Alex Lichacz who also had a good game with a Score of 69 Nett.

Ilija Sesum took out division One from Runner Up ,Ken Black with Scores of 66 & 68 respectively.

## **Saturday 7th Men's**

Overall winner and "C" grade Medal winner was Kenny Black who after the count back was applied beat Perry Cousins. Both scored an impressive 63 points.

Runner up today was Perry Cousins who also played great golf and all but for the count back would have taken equal top spot with Ken.

Third home overall today and "A" grade Medal winner was Rob Jerman who remarked that he was happy with his game today.

"B" grade Medal winner for today was Harry Dowling who put in a game of consistent golf to be rewarded with his 69 points and a good win.

## **Tuesday 10th Vets**

### **REARDON & DONOVAN WIN AT CALLALA**

The team of Jamie Reardon & Gary Donovan were too good for the rest of the Vets at Callala on Tuesday to comfortably win the Two Person Ambrose Event .

They won with a Score of 61.25 from the Runner Up Team of Ross Elletson & Bob Plunkett who submitted a Score of 64.75 Nett.

## **Saturday Men's Golf 14th**

Great start to the day was news that Gordana Sesum was to reward us all at the completion of play with a lovely lunch. Welcome back Gordana!

Barry Jarman was the man of the day coming home with an impressive 39 points to claim the number one spot on the podium along with all the accolades that go with a win.

Runner up Ken Black and Third home today was the ever happy Wayne Minns

## **Vet's Golf Friendly Between Callala & Shoalhaven Heads**

Monday 16th May saw a big gathering of veteran's golfers at Callala golf course.

The players from both Callala and Shoalhaven Heads came together in friendly competition to play the second round of The Balkwill Simmons Shield.

As Host for the day's game Callala enjoyed the help of Jamie, Jill Reardon and Jackie Edwards who prepared and served a great lunch at the end of the day's competition, which was much enjoyed by all players.

The honour of winning this Shield has been competed for by the two clubs for some 16 years with Callala having its name on the shield for many of those years.

Not this year but as Shoalhaven Heads arrived with a 33 point lead from the first round and celebrated their win at the end of today by a margin of five points.

Big congratulations to the team from Shoalhaven Heads but don't get too used to having the Shield as Callala will be trying harder next year to win the shield back.

It is this type of friendly rivalry and camaraderie that makes Veteran's Golf in the Illawarra such a great thing to be involved in.

Individual stars for the day:- John Marriott (Callala) 41 points, Barry Jarman(Callala) 37 points,

Graeme Weston (Callala) 37 points and Tom Smith (S/Heads) 36.

## **Tuesday 17th Vets**

### **HIGGS TAKES THE MONEY**

Ken Higgs took all before him at Callala on Tuesday to comfortably win the Single Stableford Event.

His final Score of 42 Points was too good for Runner Up Alan Purchase & Third place getter Tony

Pitt-Lancaster who submitted Scores of 41 & 39 Points respectively.





*Left to right: Rob Jerman, A Grade medal winner; Lija Sesum, Captain and Ken Black overall winner and C grade Medal winner*



*Ross Elletson and Bob Plunkett*



*Perry Cousins*



*Overall Winner John Marriott with Graham Lewington*

## CALLALA MEN'S VETERAN GOLFERS

### Invite YOU to Come and Join US!

Play 18 holes of golf every Tuesday and join the Callala Vet's Golfers at Callala Golf Course, Callala Country Club, 43 Callala Beach Road, Callala Beach.

We have a 'Monthly Medal' round, followed by a tasty BBQ lunch. You will appreciate what we consider to be the most challenging 18 hole golf course on the South Coast. Fun for the novice golfer while also testing the low handicapper.

**For all your golfing needs come and visit the fully equipped Golf Shop with the following facilities:**

Golf Clubs, Balls and Accessories • Golf Club and Buggy and Cart Hire • Drinks and Sweets

**Membership to join the Golf Club: Men & Ladies - \$200**

**Members:** 18 holes: \$12 - includes entry in raffle and ball competition

**Visitors:** 9 holes: \$15 - 18 holes: \$20

**Enquiries Please phone: 4446 5112**

*Prizes for the best scores plus a 'ball rundown'. There is the meat raffle with 4 draws at the presentation day. Whether you are a local or a visitor, if you have a current Australian Golf Link number and handicap, you are most welcome to join us on a Tuesday, including Ladies!*

Males 55 years or over can join the Vet's. Ladies and visitors also play on the day. If you would like to join us for great golf and friendly company, contact the Golf Shop on: **4446 5112** between 8am and 5pm and arrange a time slot between 7:30-9:30am.

**Join a welcoming and cheerful group for a good day of golf and friendship!**

**NEW!**

# SENIORS MOBILE OFFER

## Includes an easy-to-use mobile phone

**\$17** a month

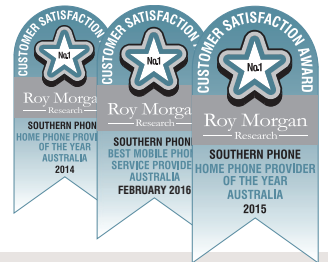
\$15 a month + \$2 Handset Fee

■ \$50 Talk & Text

Minimum cost over 24 months is \$408.

Southern Phone's Seniors mobile phone plan includes:

- Easy-to-use Onix Mobile Phone
- \$50 Talk & Text Credit
- Regional Call Centre
- Award Winning Customer Service



## Onix Big Button Mobile Phone

The Onix Big Button mobile phone is perfect for people after a simple mobile phone.

- Large Buttons ■ Big Text
- 3G ■ SOS Emergency Button
- Simple Flip Design ■ Easy to answer and end calls

The cost of a 2 minute call is \$2.38, an SMS is 25 cents and data is 5 cents per MB with a minimum charge of 25 cents.

CALL  
**1800 720 326**

**southernphone**  
looking after regional Australia

**Things you should know.** Each month you'll pay a \$15 plan fee + \$2 handset fee and receive \$50 for calls to landlines and mobiles, SMS, MMS and voicemail. Once the credit limit is reached normal charges apply. Calls and texts to premium numbers, international calls and roaming, directory assistance, mobile commerce transactions and mobile internet are not included in your call credit. There is no included data in the plan. The cost of a 2 minute call is \$2.38, an SMS is 25 cents and data is 5 cents per MB with a minimum charge of 25 cents. An early exit fee applies if the mobile service is not connected for the full 24 month contract period. This is \$12 times the months left on the contract. Southern Phone uses part of Telstra's 3G mobile network. While stocks last. Offers may be changed at any time without notice. To approved customers only. Offers expire December 31, 2016. For full details see [www.southernphone.com.au](http://www.southernphone.com.au)



## NOEL WELLINGTON'S VISIT

A meeting was held on the Headland adjacent to Bay Street and Marine Parade on Friday 13 May 2016 to discuss the possibility of two message poles being erected and carved by eminent Aboriginal Artist Noel Wellington of the Jerringa People.

Along with Noel, representatives from the Callala Bay Community Association and the Callala Beach Progress Association attended while Mr Tyrone Taylor, Program Officer Indigenous Affairs Network in the Department of the Prime Minister and Cabinet located at Nowra and his Manager, Mr John Allison also were present.

Noel provided a summary of his work at Myola and Callala Beach and reminded those attending of the importance to continue the Aboriginal story along the coast and how the various yarns could be told using designs and engravings on timber.

Noel provided an outline of a design he thought would be appropriate for the area, comprising mullet caught in a net, one of the traditional methods used by the local Aborigines in the early 90s. Students at the Vincentia High School would like to take on the task of engraving the scenarios to accompany the poles if the CBCA is able to fund this important project.

The task now is to raise the funds for these message poles and determine locations and designs.



Left to right: Julie Morris, Sandra McKenzie-Clark, Miss Kelsey (the Jack Russell), Ray Plevy, Lorraine Taylor, Jim Townsend, Noel Wellington, James Morris, Neil Smith, Tyrone Taylor, Trevor Smith and Lesley Oliver.





# JOHNSTON TOBIN

**Solicitors**

**4421 5344**

*For all your Legal and Conveyancing needs*

Criminal Law • Family Law • Wills & Estates • Property Matters  
Conveyancing • Commercial Law • Litigation • All Court Matters

**74 Berry Street, Nowra NSW 2541**



**GP JAMES CLEANING SERVICES**  
*The Royal Treatment*

## Fast Reliable & Trustworthy

- \*Specialist in Holiday home cleaning
- \* Linen Hire and Laundry Service
- \*Domestic and Office Cleans
- Bond and Rental Cleans

**Fully Insured**



**0402576859 0244465000 [gpjamescleaning@gmail.com](mailto:gpjamescleaning@gmail.com)**



**Nowra & Coast**  
**REAL ESTATE P/L**

*"Where Experience Makes The Difference"*

**What is your property worth!**

**Thinking of selling or renting your property ?**

**Free Market Appraisal**

- \* Deal directly with the principal
- \* We operate 7 days and public holidays
- \* Pensioner discounts
- \* Honest, personal, professional service
- \* Lower overheads means lower fees

**Contact Vicki On 0427 210 066 Or 44 472 920**

**A Proven Track Record With 23 Years Experience**

**5 Otranto Avenue Orient Point NSW**

**Web: [www.nowracoastrealestate.com.au](http://www.nowracoastrealestate.com.au)**

**Email: [vicki@nowracoastrealestate.com.au](mailto:vicki@nowracoastrealestate.com.au)**





# **POLICE STUFF BY SHOALHAVEN CRIME PREVENTION OFFICER SENIOR CONSTABLE JORY**

## *Target Hardening*

Unless you live in a 2 foot thick concrete box with no doors or windows I would suggest that your home has the potential to be targeted by thieves at some point throughout your life. Hopefully it hasn't already happened but if it has you would know the feeling of anger / loss and fear that follows the realisation a criminal has entered your home and rummaged through your personal possessions, not to mention the fact you will now be suffering a financial loss after realising your computer, Ipad and the Holiday stash has been stolen.

What can you do about it you ask? Well, in my business we call it Target Hardening, which is done by improving the physical security of your home and yard. It does not have to be an expensive exercise and there are many things you can do without spending any cash. Target hardening aims to make it more difficult or less appealing for an offender to break into your Premises.

Most crooks try to find an easy way into your premises. They don't want to be seen breaking in; therefore if you have large hedges or bushes in the front of your house, give them a crew cut so they don't provide a good hiding place. Put away your tools such as shovels, rakes and anything that could be used to jimmy or smash a window. This goes for the sides and back of your property.

Check your doors and windows to make sure lock properly. If your doors and windows do not have locks or they are sub standard, get some new ones. Install dead locks on all of your outside doors and make sure the doors are solid. With sliding windows, I know people who have cut dowels between the sliding window and the window frame which stops the window from sliding.

Consider installing sensor lighting which switches on when movement is detected. But just remember, every time a sensor light comes on, it does not mean

that a gang of Ninja's are about to burst through the front door and or come down the chimney. Wildlife such as dogs and cats will trip the sensor. The main thing to remember is that Crooks do not like the spotlight and are therefore deterred.

Within your home there are things that you could do in case the crooks do physically get into your home. You guessed it. Install an alarm. Once the bad guy gets into your home and the alarm goes off, he or she is not going to stick around. But he or she may grab at some of your valuables which are sitting close by prior to leaving.

This brings me to the suggestion that you put away items such as Mobile Phones, Hand Bags, IPads, Car Keys in places that provide more security than the kitchen table or the first flat surface that you see when you come through the front door after work.

- Record descriptions, models and serial numbers of valuable property and keep these records in a safe place.
- Property should be marked (engraved) with a number such as licence number prefixed by your state initials (NSW).
- Property which cannot be marked should be photographed.

Lock your doors even when you are home. If you are in the back garden; at least lock the front door. Lock windows and doors before you go to bed, Including your car doors and windows. Please take some responsibility for your home's security and do what you can to Target Harden your little piece of Paradise.

Remember; report any suspicious activity including persons and vehicles. Record descriptions and car registration numbers if safe to do so.

**As always, in case of emergency, call (000)**

**Non Emergencies contact Police Link on:  
131 444 or your local Police**

To provide anonymous information call crime stoppers on **1800 333 000**

Don't forget. Cops are tops.

## LADIES – WELCOME TO KYB

### *Know your Bible – a Bible Study for Ladies*

Welcome to an afternoon for ladies with a speaker. Plans are under way to have a study introduction at the Brethren Chapel in Kinghorn Street Nowra. Mark your calendar or diary for 1pm on the Wednesday 20th July. Most conveniently, there is plenty of parking space at the rear of the Chapel.

We will sing a song or two, then hear our speaker, enjoy afternoon tea and, if necessary, be home just in time for children coming from school. More details in next month's C.B. News.

KYB studies have been written in Australia by ladies, for ladies, for over 50 years. In Callala, we meet on 9 Monday mornings at 9am for the first three terms of the year and for the 5 Monday's of 4th term.

Each lady has her own study book which outlines the Bible reading passages for each day of the week and about 2-4 questions. All ladies have an equal opportunity to share answers when the study group meet to-gether.

Term 3 study is from Ephesians and begins on the 25th July.

Large print study book cost is \$8.50

Standard size print books cost \$8.00

For further information,  
phone Rae on 4446 5577

Ladies, if you would like to look at some “past” study books, come and see Rae.

 **Scott Morgan**  
multimedia design . . .

**Professional design solutions  
for your business**

**website design • graphic design  
logo design • printing**

**0414 785 776**

**[www.scottmorgan.com.au](http://www.scottmorgan.com.au)**



**Seaside  
Mower Doctor**

Call Bert  
**0439 714 551**

For all your outdoor  
power equipment service needs

The advertisement features a cartoon illustration of a green, octopus-like character wearing a doctor's cap and stethoscope, holding a clipboard and a wrench. The character is standing next to a red and black lawnmower. In the background, there are sandcastles on a beach under a blue sky with clouds.



# THE FAIRY GODMOTHER'S NEW QUILT

*Sandra McKenzie-Clark*

The fairies, the gnomes, the elves and everyone in the forest were trying to decide what they could get the Fairy Godmother for her birthday. They discussed all sorts of ideas, with everyone talking all at once – the noise was really quite loud.

‘I wonder’ said Fairy Lilac, ‘if she would like a new pair of slippers’

‘Where could we get them from?’ said Fairy Pansy. ‘Does anybody know her correct slipper size and what colour would she like?’

‘What about a hot water bottle’ said Fairy Rose, ‘we wouldn’t have to worry about the correct size or colour with one of those.’

‘Her wand seems to be a little drab’ said Bobbin the Gnome, ‘do you think she’d like a new one?’

‘Oh, I don’t know’ said Fairy Lily, ‘we want to get something really special for her, after all it’s not often that a Fairy Godmother turns 235 years old.’

They were all at their wits end trying to come up with something wonderful for the Fairy Godmother, who everyone knew was so busy helping other people that she didn’t have time to look after herself. She was always flitting around doing good deeds for those people who deserved her special powers. Things like granting wishes, making sure lost things were found and that there was lots of happiness and laughter to go around.

The fairy folk had organised the birthday party. The gnomes had arranged for the tables and stools, the ants were out gathering honeydew to turn into sparkling soda and the bees had started collecting pollen to make wonderfully tasty honey cakes. The spiders were weaving banners and decorations from silver cobwebs. The senior fairies were in charge of the party hats they were making out of flower petals and the elves were making loops of pretty coloured fairy lanterns. The imps were under strict instructions to behave and not get into mischief but that didn’t stop them from pinching a tub of butter from the kitchen. They spread the butter on the rainbow and spent the day sliding down it.

The weather was turning much colder as the Fairy

Godmother’s birthday drew closer and closer and the whole situation was getting quite desperate without that very special present.

Suddenly Gully the garden gnome had a wonderful idea. ‘Why don’t we make a new quilt for the Fairy Godmother? Why just the other day the Fairy Godmother had hung her old quilt to air in the sun and feathers fell out of the holes where the stitching had some apart’.

Everybody stopped what they were doing and turned to look at Gully. ‘Golly gosh Gully, I think you’ve found the solution to our problems,’ said Rusty, and everyone started cheering.

‘We will weave web silk into the finest material’ said the spiders

‘We will provide downy feathers to fill her quilt’ said the birds

‘We will gather golden binding from the rainbow to stitch the quilt’ said the fairies

‘We will sew the quilt’ said the gnomes and everyone cheered.

With the imps banished to the blackberry bush, the fairy folk got out their needles, threads, scissors, tape measures, thimbles and pins and set to work.

Very soon the gorgeous quilt was finished. It shimmered in the light of the fairy lanterns and everyone was very pleased with all their hard work. They wrapped the precious gift in gossamer tissue and tied it with a big red bow.

At the party, everyone was having a wonderful time, and the Fairy Godmother was so excited that they would go to all the trouble of organising a party just for her. The food and drinks were enjoyed by all, and the imps didn’t make too much of a mess under the tables. When it came time for the candles on the cake to be blown out, the Fairy Godmother asked everyone to help her because 235 candles is a lot! When the Fairy Godmother was presented with her gift, she thought it was the most beautiful quilt she had ever seen and thanked everyone for making such a beautiful and thoughtful gift.

Finally everyone started to clear up the forest area and head for home, delighted that the Fairy Godmother had a lovely party and appreciated her wonderful quilt that everyone had helped to create.



# UNSPOILT BEAUTY & POTENTIAL

MINUTES WALK FROM WHITE BEACHES & CLEAR WATER.

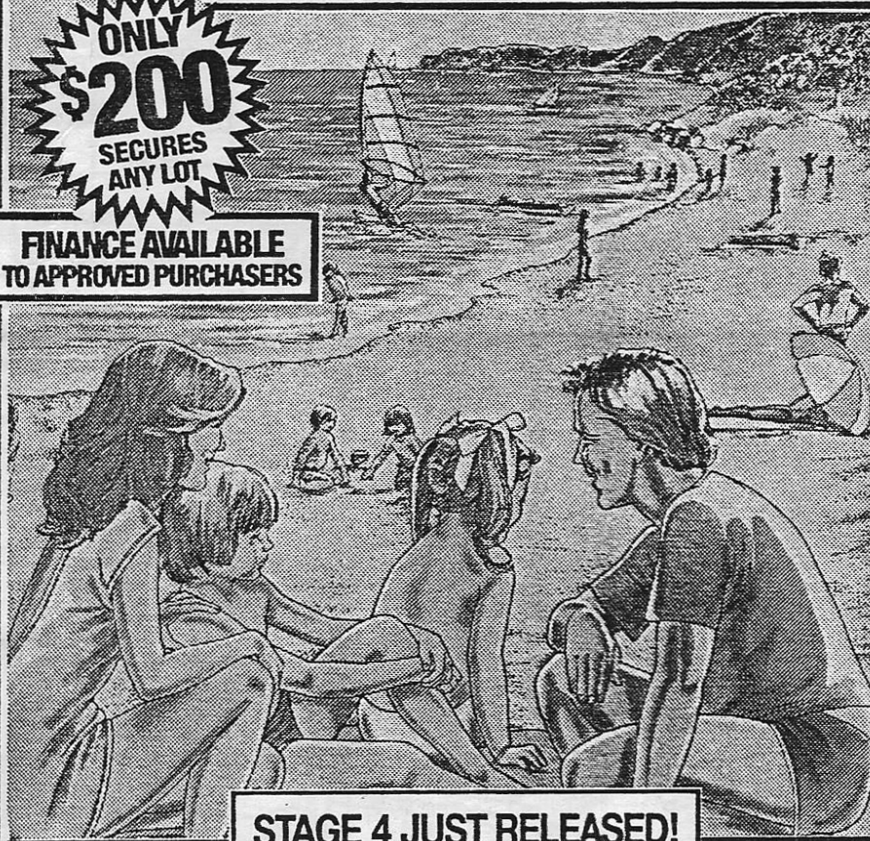


JERVIS  
BAY

ONLY 2½ HOURS FROM SYDNEY

ONLY  
**\$200**  
SECURES  
ANY LOT

FINANCE AVAILABLE  
TO APPROVED PURCHASERS



STAGE 4 JUST RELEASED!

NO REPAYMENTS TILL JUNE 1988\*

## THE SUCCESS STORY OF THE COAST

**Callala Bay Estate** The success story of the South Coast. Over **230 lots** already sold. Families have already purchased **two** and **three lots** for their future homes and investment because Callala Bay represents the best value for land at Jervis Bay.

In the light of booming real estate prices in Sydney, here is your opportunity to own your own dream holiday homesite before the boom hits the near South Coast.

## MILES OF WHITE SANDY BEACHES

Enjoy miles of soft, white sands, crystal clear waters and the full splendour of magnificent Jervis Bay. Experience countless weekends and holidays forever free from the hassles of city life.

A healthy clean air environment that's safe for the whole family. Swimming, diving, sailing, water skiing, fishing. And Callala Bay with its safe protected waters boasts one of the best all weather boat ramps on the South Coast. It can be yours. Total paradise.

## POTENTIAL UNLIMITED!!

### Features

- Sealed roads (kerbed & guttered)
- Wide frontages
- Close to beach and boat ramp
- Electricity
- Town water

### Attractions

- 2½ hours drive from Sydney
- Concrete all weather boat ramp
- Safe protected harbour waters
- Swimming, water skiing, fishing
- 15 minutes from Nowra

## Free flight inspection

Be spoilt for a day. No one knows Jervis Bay like we do. So be our guest on our cost and obligation free tour of inspection and let us show you the incredible beauty of Jervis Bay.

## Driving Instructions

If driving yourself, cross the bridge to Nowra, following the bypass road and turn left at the Leprechaun Hotel, (third set of lights after the bridge) into Greenwell Point Road and follow the yellow and blue "Realty Land" arrows to the Estate. Our representative will be on the Estate this weekend 9.00am - 5.00pm.



FOR OBLIGATION FREE INFORMATION

\* On Stage 4 Lots

PHONE  
NOW! (02) **264 1391**  
PHONES MANNED TILL 10PM TONIGHT

**Realty REALTY REALIZATIONS PTY. LIMITED** Est. 1930  
275 ELIZABETH STREET, SYDNEY 2000  
BOX 2678 G.P.O., SYDNEY 2001

Please rush me more information on idyllic Callala Bay Estate

Name \_\_\_\_\_  
Address \_\_\_\_\_  
Postcode \_\_\_\_\_ Tel \_\_\_\_\_ State \_\_\_\_\_

MIRROR Young & Looby 3272

**DON'T DELAY  
SEND TODAY**



# THOUGHT FOR JUNE FROM THE ANGLICAN CHURCH CALLALA

Seed of God's word, sown in good soil, watered by his rain and warmed by his sunlight, produces a good crop of the spiritual fruit.

*(Reflections on readings Isaiah 55:10-13; Palms 65; Romans 8:1-11; Matthew 13:1-9, 18-23)*

We have a wonderful picture of God's faithfulness given to us every year in the round of the seasons, as the earth receives the cold winter weather before the seeds are sown and growing begins again. Leading through the warmth of Spring and hot summer to the gathering of the harvest. It is still very relevant to the farmers that the seasons bring rain and sunshine at their proper time to help with nurture and growing. But it is not surprising that many biblical images are to do with the yearly seasons and the desperately important blessing of the rain. The passages from Isaiah and Psalm 65 give us an ancient lesson on the water cycle, beautifully and wonderfully observed. Isaiah uses it to illustrate the way God's word has a habit of being accomplished, working its way down into our hearts and providing his grace to cope with all that is to come. It may sometimes look unpromising, but then so does the bare winter ground. Unless you have lived through the previous summer. We need to trust

God's word during the dark periods of our lives.

We read in the Gospels that Jesus has walked the same earth we inhabit, watching the yearly sowing of seeds and hearing the squabbling birds. It speaks to Jesus clearly of the different ways we all respond to the word of God. Leaving people to puzzle over his story is an important part of the process of sowing the seed. What is this seed which takes root and grows fruit in good soil? What was he really telling us? Growing opposition to Jesus' ministry makes the parable in Matthew 13 a safer method of teaching. Perhaps it will serve to soften up the grounds of defensive hearts in a less threatening way.

The disciples are surprised to hear Jesus using such a method of teaching for them and the crowds. Unlike the crowds, the disciples are able to ask him to spell it out clearly. Inevitably they and we are bound to ask ourselves serious questions about where we are and how we respond to the word of God. Presumably the idea is for the church to be filled with seed growing in good soil, for all that is required is to be open and receptive, nourished in the watering and warmth of God's love. Those of us who are preparing the ground need to check that we are providing the very best environment for the seed of God's word to grow strong.

**Rev Sue Fisher**  
*Assistant Minister*

## Anglican Churches of Culburra Beach | Callala | Currarong **Callala - Church Service - 5pm Sunday**

**All Welcome | Kids Church**

St Marks, 2 Hunter Street, CALLALA BAY

**Caterpillar's Play Group** - 9:30am Friday @ Culburra Beach Anglican

**Kids Club** - 3-4:30pm Friday @ Callala Anglican

**289 (Youth)** - 5-7pm Friday @ Callala Anglican

**For more information: Rev. Paul McPhail**

m. 0414 616 860 e. [culburra.anglican@gmail.com](mailto:culburra.anglican@gmail.com)

[www.culburraanglican.org.au](http://www.culburraanglican.org.au)



***Callala Bay***  
**Open 7 Days A Week**  
**Market-Fresh Fruit and Vegetables**  
**Lotto      Newspaper      ATM**

**It Pays to Shop Independent**

**Located in Bayview Plaza, 55 Emmett Street, Callala Bay**

*How the locals like it™*



# SCHOOL HAPPENINGS

- Netball Knockout Competition - Wednesday 18 May 2016 the Callala Public School Netball Team played against Huskisson Public School's Netball Team. The way that all the girls played together as a team was a major influence on the result. Our team had some very experienced netballers and this experience overpowered the less experienced opponents. Our next game will be against St Georges Basin, which will be a much closer game as the experience level of both teams are very similar
- Regional Cross Country – Friday 3 June 2016. Two of our students are competing.
- Athletics Carnival 10 May 2016 at Callala Sports Ground. This is a whole school event
- Premiers Debating Challenge 30 May 2016 at Milton Public School. 11 Of our Students will be competing.
- The choir is participating in the Shoalhaven Eisteddfod on Thursday 26 May 2016 at the Shoalhaven Entertainment Centre. This year the choir will sing two songs. They have been working very hard. tickets can be purchased from the Entertainment centre for \$5.00.
- 2B has built a worm farm as part of their science unit 'School yard Safari'.
- The P & C are hosting a Crazy hair disco at the school hall Thursday 2 June 2016.
- The school is participating in activities to prepare for Reconciliation Week from 27 May to 3 June 2016. On Tuesday 24 May, all students are participating in workshops designed to raise awareness and increase knowledge about Aboriginal Cultures and Histories. The senior students and all Aboriginal students are travelling to Culburra to join in the Reconciliation Walk, along with Culburra Public School and Jervis Bay Primary School. This event helps us to teach

children about the cultural diversity of our country by highlighting Aboriginal culture in our local area. All parents and families are invited to join the walk which commences at 10:30 with the start point at the soccer fields at Crookhaven Heads. It would be great to see as many people there to support reconciliation in our local communities.

- Premier's Reading Challenge, which is an initiative of the NSW State Government, aims to encourage a love of reading, and to enable students to experience a wider range of quality literature.
- Years K to 6 will be participating in a soccer Skills program which commences 31 May 2016 to 28 June 2016.
- Our Boys and Girls Soccer Teams played on Monday 23 May 2016 here at Callala. Their opponents were Culburra Public School. Teamwork was again a goal for both teams and it was pleasing to hear that sportsmanship was high for both of the teams. The girls played valiantly but were defeated by Culburra. The boys came away victorious and will continue on to the next

*Louise Hopcroft*

## CULBURRA & DISTRICT COMMUNITY HEALTH SERVICE

We maintain the Op Shop, Ambulance Station, Medical Centre and Medical Bus.

Contact Culburra Pharmacy on  
**4447 2382** to book  
(travel is by donation)

Saleable furniture can be collected  
by phoning Jim on:  
**4446 6733** or **0419 538 963**

Drivers phone Neil on:  
**4447 4713**

# CALLALA MEN'S BOWLS NEWS FOR MAY 2016

The AGM for the Men's Bowling Club was conducted on Sunday 8 May, followed by a BBQ lunch and several games of "skins" (the winner takes all) with many of the women bowlers joining in. The rain held off for a lively couple of games of bowls. What a great way to spend Mother's Day for those unable to see their kids.

The elected committee for 2016/2017, Greg McMillan (President), Darrell (Tiger) Mason and Corey Carter (Vice Presidents), Robert Fowler (Treasurer), Patrick Ford (Secretary), Dennis Beazley (Bowls Organiser, ( Assistants) Ron Wilkinson and Marty Gehrke. Congratulations to all.

The first round of the Men's Pairs Championship was played on Saturday 7 May in fine and sunny conditions. Bob Fowler and Dennis Beazley defeated Marty Gehrke and Barry Schey 26 – 10, over 19 ends. On rink 3, Garry Manning and Pat Ford defeated Dion Gadd and Pauli Kennedy 26 – 17 over 21 ends. Phill Bowerman and Anthony Fisher were 18 all with Terry Castle and Chris Harbrow on the 21st end, Anthony and Phill won the tie breaker by one shot, their score 19 – 18. Eddie Semevente and Greg McMillan were too strong against Howard Duncan and Glenn Brindle, winning the game 29 – 12. Seasoned players Terry Renaud and Craig Taylor were too good for new players, junior Stephen Bowerman and Stephen Blackley, winning 26 – 5 on the 15th end. The next round is scheduled for Saturday 14 May.

Saturday afternoon, 14 May, two games in the 2nd round of the Men's Pairs Championship were played in near perfect weather conditions. Bob Fowler and Dennis Beazley played Anthony Fisher and Phill Bowerman. This was a close game until the 9th end when Bob and Dennis surged ahead to win the game, declared on the 20th end, 21 – 12. Col Neighbour and Corey Carter had a tough game against Terry Renaud and Craig Taylor. The final score was 24 – 18 to Col and Corey. The semi final is set down for 21st May and is shaping up to be a must see game.

The semi final of the Men's Major Pairs was played on Saturday 22 May in new perfect bowling conditions for this time of year. Col and Corey led all the way keeping the unlucky, Bob and Dennis, out of the scoring on most ends. Col and Corey won 26 – 7 and go into the final which is set down to be played on Saturday 28th May. It was a great game to watch, with all players putting in a big effort. The final is due to be played on Saturday 28 May.....should be a great game to watch, if you are interested be at the Club at 1.00pm.

*Lyn Byrne*



*L to R: Tiger Mason (Vice President), Greg McMillan (President), Bob Fowler (Treasurer) and Patrick Ford (Secretary)*



*L to R: Dennis Beazley and Bob Fowler after defeating Anthony Fisher and Phill Bowerman in their semi final of the Major Pairs*



*L to R: Col Neighbour and Corey Carter after defeating Dennis Beazley and Bob Fowler in their semi final of the Major Pairs*



# CALLALLA WOMEN'S BOWLS NEWS

Things have been a bit quiet for the Callala Women's Bowling Club during May, due to inclement weather, school holiday commitments etc. We did manage a few games and it was great to see the newer ladies learning a lot from out of action older players. We would like to see some more new players, whether they are experienced or have never played before.....coaching provided and bowls supplied until you get started. Please ring Lyn on 44466985 for further information or turn up on Tuesday morning, at the Club at 8.45am. We are also trying to get Thursday bowls going again.

Tuesday, 26th April, a great game of social triples was played. Debbie Allen (swinger), Audrey Mansfield and Lyn Byrne defeated Debbie Allen (swinger), Rocky Richette and Dianne Dawes. Thank you to Bev Fowler who is recovering from an operation for her bowling tips. The first round of the Women's Major Singles is due to start on the 10th May so make sure your name is on the board.

Tuesday 9 May, marked the start of the Major Singles Championship. In very challenging conditions, with wind gusting up to 50km and hour, Lesley Harbrow and Lyn Byrne played a marathon 3 hour game, Lesley defeating Lyn on the last two ends, 25 – 16. Thursday, Kaitlin Shaw and Terry McMillan played their game in similar conditions. The score was close on many ends with Kaitlin defeating Terry, 25 – 12, the score not indicative of the game. Carmen Carter and Barbara Hollands played their game over the weekend in unseasonably warm conditions. Kaitlin took the early lead with Barb equalling the score on the 22nd end. Kaitlin went on to win, 26 – 20. Again, thanks to all the spectators who attended to support the girls.

The fine weather over the weekend enabled three games in the Women's Major Singles to be played. On Saturday, Tracey Semevente and Sam Bowerman played their first round of the Major Singles. This was a tight game with the score 9 – 5 to Tracey, on the 6th end. Although Sam held the shot on most ends, the more experience Tracey went on to win, 26 – 7 on the 15th end, congratulations to both girls for a great game.

Carmen Carter and Audrey Mansfield played their second round Major Singles game. Once again, the score was even over the first few ends. Carmen then went ahead to win the game 26 – 7 on the 16th

end. Great game, thank you to all the spectators who came to support the players. Also thank you to Barbara and Lyn for marking the games.

Sunday afternoon, 23 May, Tracey Semevente backed up to play Petra Ford in their second round of the Major Singles. Although the weather was fine, it was very smoky due to back burning by the fire brigade. Petra took the early lead with Tracey equalling the score 3 all on the 4th end. Petra continued the lead until the 13th end when Tracey took over the lead and won the game 25 – 16, on the 27th end. Once again, another great game of bowls.

The semi finals should be a great contest, and at this time, will be played on Saturday 28 May, so if you have nothing better to do and the weather is fine, come down to the Club and watch some great games of Bowls.

On our sick list: We would like to wish our Bowls Secretary, Elaine Coid, (Bowls Organiser) Joan Jagger and (Selector) Bev Fowler a speedy recovery, hoping to see you all back at bowls soon.

*Lyn Byrne*



*L to R: Tracey Semevente (after winning her 1st Major Singles round match against Sam Bowerman), Lyn Byrne (marker) and Sam Bowerman*



*L to R: Audrey Mansfield, Barbara Hollands (marker) and Carmen Carter after winning her 1st round game in the Major Singlesa*



The Hon

## Shelley Hancock MP

Member for South Coast

Speaker of the NSW Legislative Assembly

“Please come in and see me -  
It will be a pleasure to help”

57 Plunkett Street, Nowra  
PO Box 1426, Nowra NSW 2541

Ph: (02) 4421 0222

Fax: (02) 4422 1180

Email: [southcoast@parliament.nsw.gov.au](mailto:southcoast@parliament.nsw.gov.au)



WINNER OF THE CALLALA BUSINESS OF THE YEAR AWARD 2016

## Callala Bay Pharmacy

2/55 Emmett Street, Callala Bay 2540 4446 4251

Hours: Mon-Fri 9am-5:30pm; Sat: 9am-12:30pm

***Friendly, Professional Service***

Diabetes Australia Supplies

Baby Weighing • Gift Lines

**FREE delivery to Callala Beach and Callala Bay**



## E & S Painting Services

- Interior & Exterior Painting
- Friendly Local Service
- Excellent Rates
- Quality Assured

**M: 0422 560 696 H: 4446 5056**

Graham Worts



# BIGGEST MORNING TEA

Thank You to everyone who attended the Biggest Morning Tea event this year, it was such a rewarding day with a sea of smiling faces and copious cups of tea and coffee enjoyed.

Special thanks must go to: Callala Beachside Bistro, Barefoot Beach, Sixth Sense, Callala Post Office, Bay Village Meats, K.Hair & Co., Callala Cellars, IGA Supermarket, Salute Restaurant and last but by all means not least - Callala Pharmacy for instigating this annual project over 10 years ago and growing it to such a stage that it had to be moved to bigger premises this year. Callala Pharmacy also sold raffle tickets and donated raffle prizes. We thank all of these businesses for their continuing generosity.

Thank you to the many cooks who contributed such a vast array of yumminess (which I am assured was all calorie and fat free for the day!), however there was almost a stampede when Sue Borrowdale delivered her scones (together with

cream and jam) just out of the oven!

Thank you to Callala Community Centre for permitting us to use the venue.

Thanks also go to all of the volunteers who gave up their time to make the morning such a success.

Approx \$1100 is on its way to the Cancer Council!

Well done everyone, please pat yourself on the back.



**firstnational** | Callala  
REAL ESTATE

At Callala First National you'll find a team of professionals to handle all of your real estate needs. We have been serving the Callala community for over ten years and continue to strive to provide a service above and beyond our client's expectations.

## Address

58 Boorawine Tce  
Callala Bay  
NSW 2540

## Contact

P 4446 4313  
F 4446 4311  
E [info@callalafirstnational.com.au](mailto:info@callalafirstnational.com.au)  
W [www.callalafirstnational.com.au](http://www.callalafirstnational.com.au)



**QUALITY ASSURANCE**  
SYSTEM ISO 9001



Specialising in  
**WATERPROOFING**

- BATHROOMS
- BALCONIES
- PLANTER BOXES
- ROOFING

**JOINT SEALING**

- FIRE RATED
- PANEL JOINTS
- SAW CUTS
- FLOOR JOINTS

WATERPROOFING LIC.NO. 163162C  
MASTER BUILDERS ASSOCIATION  
MEMBERSHIP NO. 18491909

ADVERTISEMENT



# ANN SUDMALIS

## Liberal for Gilmore

*Creating more local opportunities,  
a healthier community and  
safer local roads.*



Authorised by Ann Sudmalis, 59 Junction Street, Nowra NSW 2541.

**59** Junction Street (PO Box 1009), Nowra NSW 2541

**W:** [www.annsudmalis.com.au](http://www.annsudmalis.com.au)

**E:** [ann.sudmalis.mp@aph.gov.au](mailto:ann.sudmalis.mp@aph.gov.au)

**P:** (02) 4423 1782

Dr John C Wright B.V.Sc.

## CULBURRA VETERINARY CLINIC

7 Weston Street, Culburra Beach

9am-11am weekdays

4-6pm Mon, Tue, Thurs

4-5pm Wed, Fri

10am-12pm Sat

## CALLALA VETERINARY Consulting Room

22 Emmett Street Callala Bay

1-3pm weekdays by appointment

**Please phone: 4447 3851 for appointments, enquiries or after hour calls**



# Callala Community Church

## ... following Jesus

Sunday Worship 9am

at the Callala Community Centre  
Emmett Street, Callala Bay

Wednesday Home Prayer Meeting 7.00pm

Enquiries phone Pastor Kevin Kettlewell 0437 338 739

FREE

## Pre-Loved Clothing & Book Stall

First Saturday of the Month  
at the  
Callala Community Centre  
9.30am to 12am

(There will be no Clothing Stall held in July)

Clothes in good condition can be dropped off at the stall (on the day only). If clothing can be delivered by 10am; this will allow items to be displayed.



## **CALLALA BAY AND BEACH RURAL FIRE SERVICE**

### **TRIVIA NIGHT for CHARITY CALLALA RSL COUNTRY CLUB**

CALLALA BEACH RD CALLALA BEACH

**Saturday 16th July 2016 - 5:30 for a 6:30pm start**

**\$15 per head (Teams of 8)**

(up to 6 answers per team can be "bought", so bring some change)

**Includes Tapas and dessert, plus one entry to lucky door**

**There'll be games, music and famous faces**

**So grab some friends & family to make up a team.**

**Don't have enough to make up a team? Don't worry, we can team  
you up with some others**

**Bar service will be available**

**So come along, have some fun whilst helping raise money for a  
very vital service to our community**

#### **WANT MORE?**

**Andrew Dyer & Sharon Gadd will be opening the night and**

**Sharon will be also performing solo**

**Local artist Colin Darley has donated a piece & will be raffled**

**Valued at \$450**

**Sporting Memorabilia**

**Live Auctions**

**Silent Auctions**

**Prizes galore ...AND MUCH MORE**

**ALL BOOKINGS TO HELEN ON 4446-5509**

Other enquiries to Dianne: [triviatonightinfo@gmail.com](mailto:triviatonightinfo@gmail.com)

Proudly hosted by:

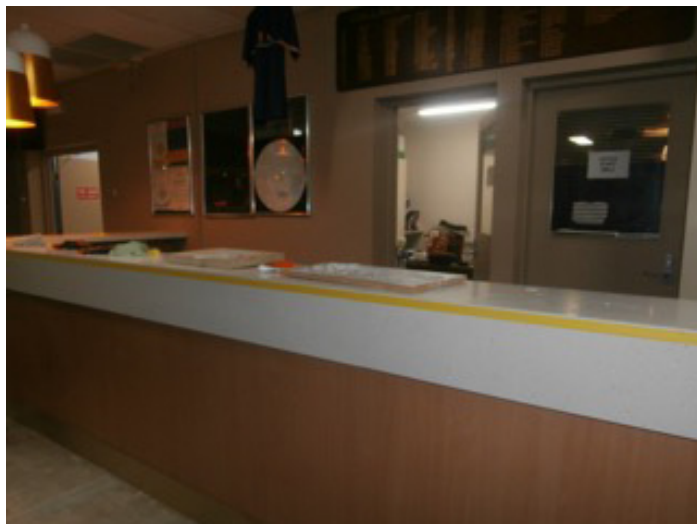


**PROUDLY SPONSORED BY:**





# CALLALA RSL COUNTRY CLUB RENOVATIONS



## BE IN HARMONY

Harmony Meditation Group has been meeting at Callala bay on a Friday morning at 10am for over 7 years. NO fees, NOT a religion, NOT a psychotherapy group, NO obligation to attend weekly ~ just when you want to.

Relax and learn how to live IN HARMONY with yourself and your world.

**RING JOHN OR JEANNIE ON: 4446 5902**

or come to

59 BOORAWINE TERRACE

10am Friday

**ALL GENDERS, ALL AGES WELCOME**



CENTRAL  
SHOALHAVEN  
MOBILE

# Preschool



Central Shoalhaven Mobile Preschool is a community based not for profit organisation operating for 38 years in the Shoalhaven area. We provide educational programs designed for preschool children aged between 3 - 5 years by fully qualified staff in a caring environment. Allow your child to make new friends within the local area. Subsidy available. We operate from Callala Beach Community Centre, Quay Road Callala Beach on Tuesday and Wednesday.

**PRESCHOOL HOURS: 9.00 - 3.00 ADDITIONAL HOURS: 8.00 - 9.00**

All enquiries please phone our office on 4423 0571 / 0432 274 244 or call in at our venue.

**[www.shoalhavenmobilepreschool.com.au](http://www.shoalhavenmobilepreschool.com.au)**



# From this . . .

## **PROGRESS ASSOCIATION / FIRE SHED**

**Completed March, 1970 at a cost of \$2,421**

The Hall was officially opened on 28th March, 1970 by the Shoalhaven Fire Officer, Mr. R. Wiffen. Mr. Wiffen also gave the fire brigade some additional equipment which included six new polythene knapsacks, a battery charger, a medicine chest and a number of fire ropes. Mr. Wiffen also congratulated the Association on a job well done.



# To this . . .





## **HISTORY OF THE CALLALA BAY BUSH FIRE STATION**

The Callala Bay Bush Fire Brigade previously operated from the Callala Bay Community Hall, with the tanker being housed in a section of the building. Extensions were carried out in 1984 with funding from the Commonwealth Community Employment Programme. Although these extensions were of assistance to the Brigade, there was no provision on that site for upgrading of facilities or increasing the tanker fleet.

In March, 1989, a formal request was received by Council from the Brigade for a new Station and the Brigade offered to carry out all construction by voluntary labour.

The strategic importance of this new Station was recognised by planning for a three-bay station with radio room, amenities and storage facilities. Concept sketches for the station were prepared by Bishop and Hitchcock, Architects, and detailed design plans were subsequently prepared by Mr. Fred Burman, Architect of Nowra.

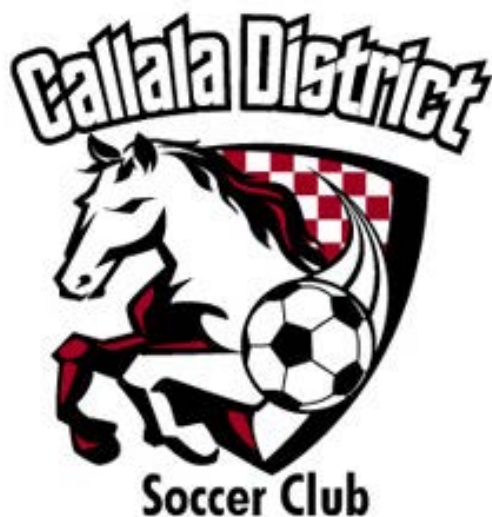
Building construction commenced in April, 1991, with the majority of the work being completed by June, 1992. The construction work was carried out by voluntary labour under the energetic and tireless leadership of Captain Len Paterson. Mr. Jeffrey Forsyth of the building contractors, Forcon Pty. Ltd. of Cronulla, co-ordinated the the supervision and administration of the building work.

The total value of the new Bush Fire Station is estimated at \$130,000, made up of \$75,000 materials and \$55,000 voluntary labour. The cost of the materials was jointly financed by Council, the Brigade and the Department of Bushfire Services.

The Callala Bay Station is the first of a number of Stations which are planned for strategic sites within the City of Shoalhaven. It is expected that this Station will cater for the fire prevention needs of the immediate area well into the next century.

---





## BRUMBIES ROUNDUP

All the teams from the Callala U/6s through to our Senior teams have been showing a great competitive spirit and generally enjoying the fine weather for the weekend matches and the mild nights for the weeknight participants.

The Ladies team with their mixture of youth and experience are having a great start to the season. Jarrod their coach has the ladies playing an exciting brand of football. They are currently second on the competition table.

The U/16 Premiers have had a difficult run over the last month having to play catch up matches on both Monday and Wednesday nights numerous times during the month. They have also had to deal with the loss of their regular coach Craig who recently broke his ankle. A big thankyou goes to Russell who is coaching the lads in Craig's absence. The lads are lying fourth in the competition. If they keep playing this positive style of football, we will be cheering them on through to the semi-finals and beyond.

The Callala U/14 Youth Team, playing in the highly competitive A grade competition have also locked up fourth position and are producing great attacking football under the guidance of Graydon and Glen.

The Callala Brumbies U/12s are enjoying their first year of playing in a competitive age group as well as the first year of playing on a full size field. Their coach Ben has done a great job in getting the youngsters to adjust to this different style of

football. The effort they are putting in will get results for this enthusiastic young team.

It is good to see the solid support for the Juniors and Mini roos during our Saturday games. I know the youngsters enjoy hearing the cheering and positive support from all the spectators. From the club side I'd like to thank all the spectators that come to support the Callala Brumbies teams and are respectful of not only the Referees and Linesmen but also the club match officials who give freely of their time to ensure a pleasant environment exists for us all to enjoy the game.

The club would like to congratulate Blake Horton, who has just signed a contract with the TELSTAR Club in the Netherlands Professional Football League. It wasn't all that long ago that he was developing his goalkeeping skills down at the local football field.

The Brumbies two Senior Men's sides under the guidance of Brad and Tony have had some mixed results but are now starting to grow in confidence and the results they have been training for are starting to come. Our Second Grade Men's team has the youngest average age of any of the clubs in the Shoalhaven competition. As they grow in confidence they are going to put a lot of pressure on the top four teams. The Brumbies Third Grade Men's team had suffered injuries to a few key players in the early part of the season. Now that they are almost back to full strength some positive results are sure to fall their way through the next couple of rounds. Sadly we wish bon voyage to two of the club stalwarts, Chris and Zoe who are off to Tasmania soon. As a club we wish them all the best in their endeavours and adventures that are sure to lay before them in their Tasmanian escapades. If you have had the pleasure of being associated with Chris or Zoe the Brumbies Soccer Club is having a gathering at the oval after the Men's game on 25/6/16 so please drop down to wish them all the best for the future.

Well that's the Brumbies' round-up for this month! I like to thank our sponsors for their on-going support; Callala Bay IGA, Tony and Nat from Callala Butchers and the Callala RSL Country Club.



# ***Community Contacts***

Emergency Police Fire Ambulance - **000**  
Nowra Police Local Area Command - **4421 9699**  
Crime Stoppers – **1 800 333 000** (anonymous reporting)  
Police Assistance line -**131 444** (non-emergencies)

State Emergency Service - **132 500**  
Jervis Bay Marine Park - **44417752**

Callala Surgery - **4446 5350**

## **Shoalhaven Council**

General enquiries, business hours – **4429 3111**  
Emergencies and afterhours – **4421 3100**

## **JUSTICE OF THE PEACE**

Nancy Daniels - **4446 6817**  
Jill & Graham Lower - **4446 6281**  
Noel Ward - **4446 6800**  
Howard Duncan - **4446 6535**  
Lorraine Taylor - **4446 5117**  
Robyn Hannan - **4446 4428**

## **JP's and CIVIL CELEBRANTS**

Dallas McMaugh - **0400 189 875**  
Rexeen (Rikki) Garry - **44466649**

## ***Culburra & District Garden Club***

We meet every 3<sup>rd</sup> Saturday of the month at 1.30pm at the  
Banksia Hall Community Centre, Fred Evans Lane, Culburra Beach (IRT entry)

All welcome. For more details please ring Doris Carpenter on 44465631

## ***Culburra & Districts Community Health Service***

Visit our Op-Shop and pick up a bargain! Proceeds help maintain the Medical Bus that transfers people to Nowra for medical appointments from Greenwell Point, Culburra Beach, Callala Bay & Beach, Currarong and Myola.

Please contact Culburra Pharmacy on 44472382 to arrange transport.  
If you have good saleable furniture to donate, phone Jim on 4446 6733

## **DISCLAIMER**

The Publisher, known as Callala Bay Community Association Incorporated, does not accept any responsibility or liability in any way whatsoever with regard to any of the paying advertisers contained herein in this newsletter. Additionally the views and comments of all reports submitted are the responsibility of the person/organisations submitting same, including those from SCC (Shoalhaven City Council), which are usually copied verbatim from correspondence and are included for your information. The reports do not necessarily reflect the views of the Publisher. Please sign submitted articles.

---

**AS LOCAL AS**  
A PADDLE  
ON JERVIS BAY  
**AS STRONG AS**  
5 OFFICES  
WORKING FOR YOU



---

**AS LOCAL AS**  
THE SURF AT  
CULBURRA BEACH  
**AS STRONG AS**  
5 OFFICES  
WORKING FOR YOU



***Ray White.***

**We have purchasers eager to buy in Callala, Culburra Beach, Orient Point and Currarong today.**

**Curious to see what your property is worth? Get in touch.**

**Ray White Callala Bay                      02 4446 5799**

**Ray White Culburra Beach              02 4447 3169**

**[raywhiteculburrabeach.com.au](http://raywhiteculburrabeach.com.au)**